



MILTON KEYNES
COUNCIL

ARTS GUIDE

Including a walking tour
of art in central Milton Keynes

www.milton-keynes.gov.uk/arts



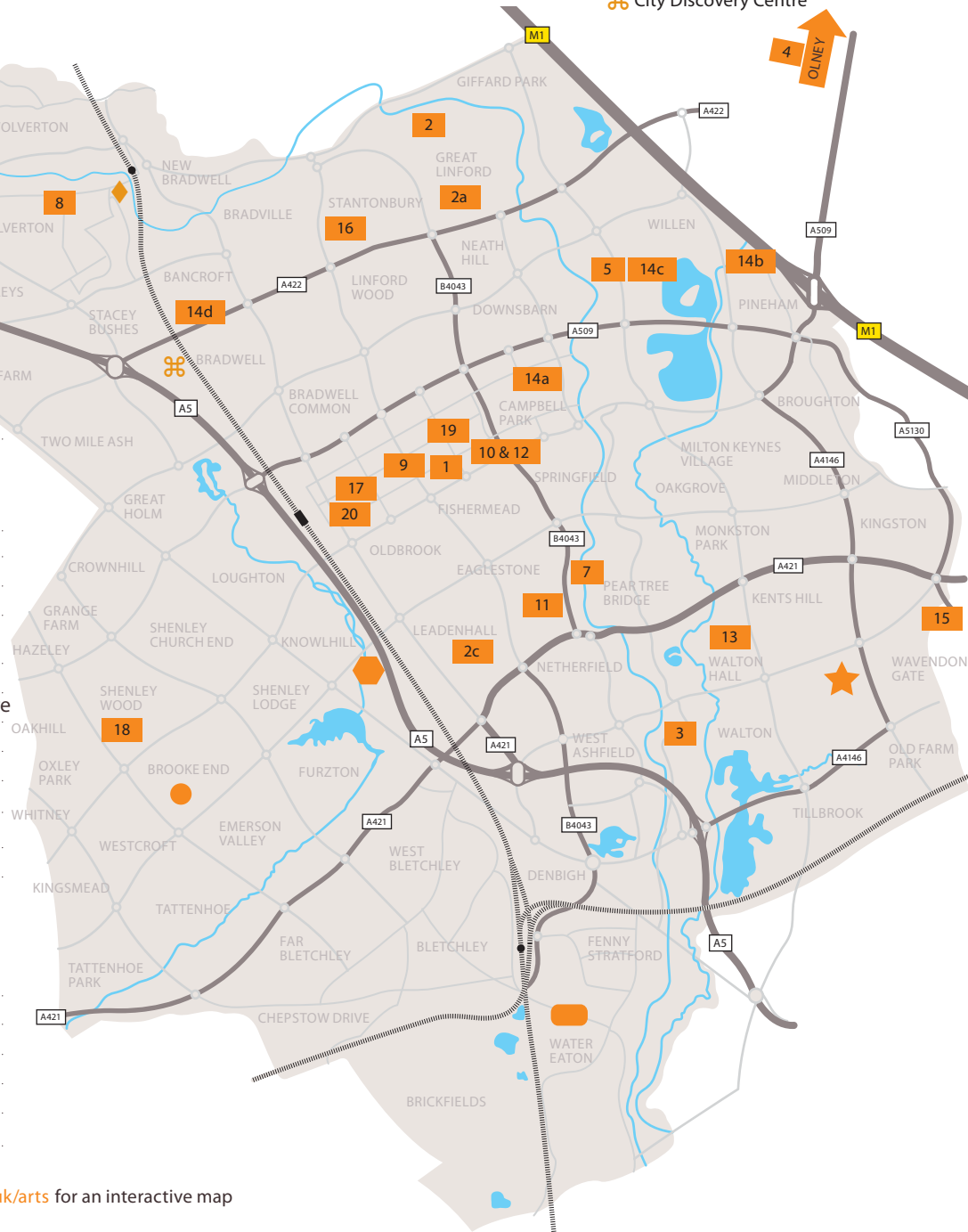
ARTS VENUES MK

Other venues offering arts opportunities:

- ▲ York House Centre
- Shenley Brook End Theatre
- ◆ The Bowl
- Leon Arts Centre
- ★ The Venue (Opening 2011)
- ◆ Wolverton Secret Garden
- ⌘ City Discovery Centre

VENUES

- 1 AIM for Art Gallery
- 2 Artworks-MK
 - a Great Linford
 - b Galley Hill
 - c Coffee Hall
- 3 Milton Keynes Music Service
- 4 Cowper & Newton Museum
- 5 The Chrysalis Theatre
- 6 The Stani Gallery and Shop
- 7 Inter-Action MK
- 8 Madcap Performing Arts Centre
- 9 Milton Keynes City Church
- 10 Milton Keynes Gallery
- 11 MK Arts for Health
- 12 Milton Keynes Theatre
- 13 Open University
- 14 Parks Trust
 - a Campbell Park
 - b Cathedral of Trees
 - c Peace Pagoda
 - d Concrete Cows
- 15 The Stables
- 16 Stantonbury Campus Theatre
- 17 University Centre
- 18 Westbury Studios
- 19 Fringe MK
- 20 The Buszy



Please visit www.milton-keynes.gov.uk/arts for an interactive map



ARTS GUIDE

Including a walking tour
of art in central Milton Keynes

Milton Keynes has established a reputation as a centre of excellence for exciting and accessible arts. This pocket-sized Arts Guide will help you seek out and enjoy the many and varied artforms available for visitors amongst the city's venues.

There are several contemporary art galleries, theatres, art centres, community arts facilities, artist run studios and workshops across Milton Keynes and their details are listed on pages 2 - 11.

Venues like the Stables which are located further from the centre are shown on the pull-out map which is called **ARTS VENUES MK**. Several venues are within Central Milton Keynes itself. These are shown in orange boxes on the **THE CITY CENTRE ART WALK MAP**.

The same map locates a selection of the city's public artworks commissioned or donated since the 1970s. Milton Keynes has one of the largest public collections in the country with works by artists and influential sculptors such as Dame Elisabeth Frink, Michael Sandle, Dhruva Mistry and Peter Freeman.

There is a **WALKING TOUR** set amongst the distinctive architecture, busy shopping centres, spacious precincts and tranquil green spaces of central Milton Keynes, the route has been outlined on the map. On pages 13 to 20 you will find a reference number for each artwork shown on the map, along with a brief description.

Sign up to a weekly e-newsletter by visiting www.artsgatewaymk.org.uk - there is always something new to see!

VENUES



AIM for Art Gallery

759 Midsummer Boulevard, MK9 3BG

AIM for Art Gallery is an exciting space in the centre:mk at the heart of the shopping area facing Waitrose. It is a charity showcasing and selling unique work by local and regional artists and craftspeople and artists showing nationally and internationally. They also encourage community engagement and participation.

open 10am - 4pm Tuesday - Saturday

access Disabled access

entry Free

www aimforartgallery.org.uk

tel 01908 674069

parking Plenty of pay & display and some free areas



artworks-mk

Great Linford Arts Workshop, Parklands, Great Linford, MK14 5DZ

artworks-mk is a charity with their main facilities situated on a heritage site in the beautiful parklands of Great Linford Manor Park and additional facilities in Galley Hill and Coffee Hall.

Established for over 30 years artworks-mk provides exciting high quality artist led workshops, exhibitions and supports over 30 artists within their studios.

open Exhibitions 10am - 4pm Monday - Friday

10am - 12noon Saturdays

Workshop times vary please see our brochure

access Some limited and assisted access

facilities Coffee bar and exhibition space

entry Free access to exhibitions, workshop fees apply to activities

www artworks-mk.co.uk

tel 01908 608108

parking Free on site



Milton Keynes Music Service

Simpson Road, Simpson, Milton Keynes, MK6 3AF

Milton Keynes Music Service provides quality music teaching in schools and at the Centre which takes place in the evenings and on Saturday mornings and includes a Rock School, lessons, choirs and groups, suitable from 2 to adult, all abilities, wide range of instruments and genres taught.

open Office 9am - 5pm Monday - Thursday, 9 - 4.30pm Fridays
Teaching various times, including Saturday mornings

Facilities Practice rooms. We can also offer our Simpson Centre as a centre for daytime activities.

access Disabled access to all sites

entry Costs of lessons and groups available upon request

www milton-keynes.gov.uk/Music_Service

tel 0845 200 0096

parking Limited parking – free spaces



Cowper & Newton Museum The Three Hares Gallery

Orchard Side, Market Place, Olney, MK46 4AJ

A new community gallery space in the heart of Olney for individuals, groups and local societies; a place to hold small exhibitions of paintings, photography, sketches and visiting displays.

open 10.30am - 4.30pm Tuesday - Saturday (last admission

3.45pm) plus Bank Holiday Mondays/Sundays as advertised

access Access to the gardens but no disabled access to the building

facilities The gallery forms part of the museum which also has a small shop

entry Museum entry is £4 (conc. £3.25, children £1, under 5's free)

www cowperandnewtonmuseum.org.uk

tel 01234 711516

parking Free parking areas within easy walking distance.

VENUES



The Chrysalis Theatre

Camphill Communities, Japonica Lane, Willen Park, Milton Keynes, **MK15 9JY**

The Chrysalis is an auditorium that can change from an open space for dance, exhibition or conference, into a theatre with retractable raked seating and balcony for up to 209 people. The tall, spacious foyer has facilities for light refreshments.

- open** Open to the public as specified in the programme
- access** Full disabled access
- facilities** Café & bar
- entry** All performances in the theatre are priced accordingly
- www** chrysalismk.co.uk
- tel** 01908 235505
- parking** Free



The Stani Gallery

61, High Street, Stony Stratford, **MK11 1AY**

Unique distinctive art from over 35 local artists consisting of painting, photography, ceramics, glass, blacksmithing, wood, sculpture, jewellery and pottery to suit all tastes and budgets

- open** **10.30am - 4.30pm** Monday - Friday
9.30am - 5.30pm Saturdays
11am - 4pm Sunday
- access** Limited disabled access
- entry** Free
- www** thestanigallery.co.uk
- tel** 01908 567656
- parking** Free car parking on street



Inter-Action MK

The Old Rectory, Waterside, Peartree Bridge, Milton Keynes, **MK6 3EJ**

Inter-Action MK creates imaginative collaborations between artists and communities and is based at The Old Rectory, a beautiful three acre Grade II listed site next to the Grand Union Canal. Inter-Action MK runs a programme of art workshops and events at the Old Rectory. A wonderful place to be creative and learn new skills.

- open** Site accessible **9am - 10pm** daily including weekends & bank holidays. Office hours vary
- access** Full disabled access
- entry** Free to access the site. Activity prices vary
- www** interactionmk.org.uk
- tel** 01908 678514
- parking** Free parking on site



Madcap Performing Arts Centre

Madcap Trust Limited, Creed Street, Wolverton, Milton Keynes, **MK12 5LY**

A theatre with proscenium arch stage and seating for up to 110. Also offering a music studio with full rehearsing and recording facilities; dance studio with mirrored walls; and a small performance space in the concourse and gallery. There is an intimate bar with raised stage and informal seating.

- open** **10am - 3pm** Monday - Friday
Open late for exhibitions and events. See website for details.
- access** Full disabled access
- facilities** Theatre, gallery, bar, music studio, dance studio
- entry** Free with some events and performances priced accordingly
- www** madcap.org.uk
- tel** 01908 320179
- parking** Free parking adjacent to the building

VENUES



Milton Keynes City Church

300 Saxon Gate West, Milton Keynes, **MK9 2ES**

The City Church has wonderful acoustics and is a beautiful setting to hear live music. Concerts feature professional and local musicians and offer programmes spanning from Byrd to Britten, Purcell to Porter – there is something for everyone.

- open** 8am - 8pm Monday - Friday
9am - 7pm Saturdays and for services on Sunday
- access** Full disabled access
- facilities** Coffee shop, gift shop, meeting rooms
- entry** Free to visit the venue but performances are priced accordingly
- www** cornerstonemusicmk.co.uk
- tel** 01908 246486
- parking** Free parking after 6pm (pay & display before)



© Milton Keynes Gallery

Milton Keynes Gallery

900 Midsummer Boulevard, Central Milton Keynes, **MK9 3QA**

The gallery has a changing programme of international contemporary art exhibitions and occasional off site artist's projects. A stimulating programme of public talks, tours, artist-led workshops, education programme and family days cater for all ages.

- open** 12am - 8pm Tuesday - Friday / 11am - 8pm Saturday
11am - 5pm Sunday Closed Mon and exhibition changeovers
- access** Full disabled access with some disabled parking outside
- facilities** Foyer book shop
- entry** Free admission to gallery (most related events are free too)
- www** mk-g.org
- tel** 01908 676900 (Information Desk)
- parking** Short distance from pay and display/multi-storey car park



MK Arts for Health

Facilities Directorate, MK Hospital, Standing Way, Eaglestone
Milton Keynes, **MK6 5LD**

Work includes artists' training residencies, training to health care staff and music performance within the hospital. The hospital art collection comprises of over 400 works, and displays work by local artists and community groups in temporary exhibition spaces around the hospital site.

- open** The hospital is open 24hrs with artwork across the site
- access** Full disabled access
- facilities** Friends Café and Eaglestone Restaurant
- entry** Free
- www** mkartsforhealth.org.uk
- tel** 01908 243284
- parking** Hospital car parking. Charges apply



Milton Keynes Theatre

Marlborough Gate, Central Milton Keynes, **MK9 3NZ**

The theatre offers a wide and varied programme of first class dance, drama, musicals, opera, comedy and children's shows. It is also home for Milton Keynes City Orchestra's main concert season.

- open** **Telephone sales**
9am - 10pm Monday - Saturday 10am - 8pm Sunday
- access** Access to all floors. 12 dedicated seats in the stalls and a box on the circle accessible for wheelchair users
- facilities** Meeting rooms, bars, confectionary stands and performance space for educational programmes
- entry** Individually priced performances. See website
- www** ambassadorickets.com/miltonkeynes
- tel** **Box Office** 0844 871 7652
Stage Door 01908 547500
- parking** Short distance from pay and display/multi-storey car park

VENUES



Open University

Walton Hall, Milton Keynes, MK7 6AA

The Open University offers a range of clubs and societies for the arts interested including a choir, orchestra and film club. The site boasts an impressive range of permanent & temporary artworks which is added to on a regular basis. Annual concerts and open days are offered with free entry for you to experience their rich arts programme.

www open.ac.uk/ouclub

tel 01908 652061



Parks Trust

Campbell Park Pavillion, 1300 Silbury Boulevard, Campbell Park, MK9 4AD

The events plateau at Campbell Park offers a range of events and festivals throughout the year, most of which are free of charge. The Parks Trust also manage the Cathedral of Trees, Peace Pagoda and Concrete Cows.

open Open all day every day - events throughout the year

access Full disabled access

entry Free to access site. Some events free - check websites

www theparkstrust.com

tel 01908 233600

parking Parking approx 5 minutes walk away. Various charges



The Stables

Stockwell Lane, Wavendon, Milton Keynes, MK17 8LU

A live music venue putting on over 300 concerts and a similar number of educational activities every year. The concert programme crosses genres – folk, world, rock, pop, classical, country, jazz – whatever you like, you'll find it at The Stables!

open **Core Box Office hours: 10am - 6pm** Monday - Saturday
5pm - 8pm (Sunday and show nights only)

access Full disabled access

facilities Café in Stage 2, open from 5.30pm on show nights.

entry Individually priced performances. See website

www stables.org

tel **Box Office:** 01908 280800

parking Parking for 250 cars is available immediately outside the venue and is completely free of charge



Stantonbury Campus Theatre

Stantonbury Campus, Stantonbury, Milton Keynes, MK14 6BN

An intimate 250 seat theatre (comedy, contemporary drama and family-friendly children's theatre) and gallery. The theatre is available for hire and supports local productions including musical theatre, big bands, choirs and dance.

open Box Office and Admin **10am - 2pm** Monday to Friday (Box Office also open 30 minutes before the start of a show)

Gallery: Open during shows and by appointment through karen.vizard@stantonbury.org.uk

access Full disabled access

facilities Bar

entry Individually priced performances. Free entry to site

www stantonbury.org.uk

tel 01908 324422

parking Free parking adjacent to venue

VENUES



17

University Centre Milton Keynes Gallery

200 Silbury Boulevard, MK9 1LT

UCMK has a changing programme of approximately seven exhibitions per year in the two, purpose built gallery spaces. There is free access to see the wide variety of challenging and thought provoking work on show whilst enjoying coffee, tea and great food at Café Nino.

open 9am - 8pm Monday - Thursday

9am - 5pm Friday

access Full disabled access

entry Free

www ucmk.ac.uk

tel 0845 8380880 (general enquiries).

Adrian Pinckard 01908 637276 (exhibition details)

parking A mix of free and pay & display close to the building



18

Westbury Studios

Foxcovert Road, Shenley Wood, Milton Keynes, MK5 6AA

Westbury maintains affordable studios, work spaces and supports professional artists while raising the profile of the arts in Milton Keynes. There are high quality original works of art for sale as well as an art rental scheme.

open Open for specific events and exhibitions

Please contact to arrange a studio visit

access Ground floor has no steps but no disabled access to upper floors. No disabled toilet

facilities Artists studios

entry Free

www westburystudios.co.uk

tel 01908 501214

parking Free on site



19

Fringe MK

thecentre:mk (adjacent to John Lewis) & Midsummer Place (opposite Hollister)

Central Milton Keynes, MK9 3BA

Professional arts spaces in the heart of the shopping centres, bringing contemporary art to a wide audience. Spaces are programmed throughout the year by University Centre Milton Keynes, Milton Keynes College & Fringe MK.

open 9am - 8pm Monday - Friday

9.30am - 7pm Saturday and 11am - 5pm Sunday

access Full disabled access

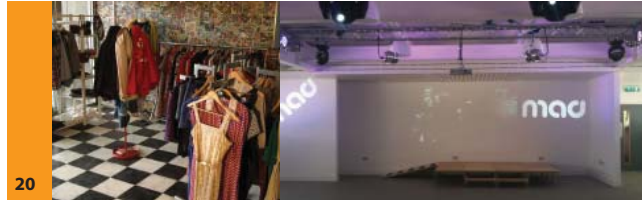
facilities Full shopping centre facilities

entry Free

www ucmk.ac.uk or fringemk.com

tel 0845 8380880 / 07918 030445

parking free and pay & display



20

The Buszy

401 Elder Gate, Central Milton Keynes, MK9 1LR

The Buszy is a state-of-the-art city centre based cultural hub, regenerated on the site of the Former CMK Bus Station, by community interest company, Make a Difference. The venue has a capacity for 400 standing and 250 seated.

open Late night for scheduled events.

24 hour flexibility/availability

access Full disabled access

facilities performance arena, exhibition space, urban garden and cafe, world class skate park, boutique cinema, retro shop, cafe/bar, legal external graffiti walls, meeting/conference space

entry Free entry to venue. Some events may be ticketed

www mad-uk.org

tel 01908 231312

parking 200+ free spaces

ARTWALKS

MILTON KEYNES ARTWALKS provides you with a walking map and guide around some of the many public artworks in central Milton Keynes. As you will see from the map, the Artwalk is a circular route, which you can start at any point.

The information in this guide starts and ends at Milton Keynes Theatre.



1 HOUR 30 MINUTES

This walk will take approximately one and a half hours and is suitable for wheelchair users and pushchairs.

Guided tours or **Artwalks** can be arranged for groups by the Blue Badge Guides. Please telephone **01908 373619** or visit <http://www.blue-badge-guides.com/MiltonKeynes.html>

Background

Milton Keynes has a large collection of public sculpture, much of which was purchased or commissioned when the new city was being built in the 1970s and 1980s. On your walk through the city centre you can see work by some of the most influential sculptors of the past thirty years, including Dame Elisabeth Frink, Michael Sandle, Bill Woodrow, Dhruva Mistry and Peter Freeman. This walk does not include all the public art works in Milton Keynes and the collection changes.

Milton Keynes Council are actively commissioning artists to respond to and contribute creatively to Milton Keynes. For further information about the city collection please visit www.milton-keynes.gov.uk/arts

Moon Drawing, 1999. *Alison Turnbull* **Graphite and ink on concrete**

Turnbull's wall drawing - seen from the Milton Keynes Theatre Foyer - is taken from a topographical map of the moon's surface made in Leipzig in 1894. From outside the building the drawing is almost invisible during daylight, but, like the moon itself, becomes visible when lit at night. Limited Edition prints of Moon are available for purchase from MK Gallery.

© Milton Keynes Gallery

map ref: A1



Wallwork, 1999. *Michael Craig-Martin* **Laser-cut mild steel**

Michael Craig-Martin's work - also in the Milton Keynes Theatre Foyer - is a visual clue to the function of the building. His 'drawing' in mild steel shows three objects - a grand piano, a book and a tin of paint brushes. Together they represent processes underlying the creative activities here: music, the written word, and the visual image.

map ref: A2



Electric Sheep, 2003. *Bruce Williams* **Laser cut images into Steel and Glass Lightbox**

The artist was influenced by Margaret Powell's life as a sheep farmer. The Margaret Powell fund contributed to the cost of building the Theatre and Gallery in 1999. The square outside the Theatre is called Margaret Powell Square, and the changing lights and colour of the artwork can be seen from this space.

map ref: A3



Dangerous Liaisons, 1995. *Philip Jackson* **Laser cut images into Steel and Glass Lightbox**

Dangerous Liaisons is based on the mask and inspired by the Maschera Nobile of 17th and 18th century Venice. This costume hides the identity and gender of its wearer, allowing him or her to go about the city unrecognized. This would allow for intrigues, vendettas and love affairs to take place without fear of discovery.

map ref: A4



ARTWALKS

map ref: A5



Paparazzi, 1996. *Steven Gregory* **Bronze**

Gregory's anthropomorphic cameras stalk the Theatre district like vultures or crows. Gregory describes them as 'hunting in a pack, but always looking after number one first. Ready to snap at just the right moment to immortalise their chosen victim'.

map ref: A6



Circle of Light, 1980. *Liliane Lijn* **Aluminium and copper wire**

Circle of Light consists of 23 tubes creating a curved, circular plane that relate to the shape of the sun, moon and human eye. The cylindrical tubes relate to the shapes behind the retina of the eye that convert light into electrical pulses.

map ref: A7



Black Horse, 1978. *Elisabeth Frink* **Laser cut images into Steel and Glass Lightbox**

Black Horse is sited outside Lloyds Bank, echoing its iconic logo. Elisabeth Frink gained recognition in the early 1950s. She used animal and human forms to express the anguish of the post-war period.

map ref: A8



The Whisper, 1984. *Andre Wallace* **Bronze**

The Whisper is ideally suited to be outside the public library, a space where people meet and socialise. Wallace's distinctive heavy figures, larger than life-size, sit relaxed and at ease, watching the world go by.

Fiction, Non-Fiction and Reference, 1984. *Boyd and Evans*

Acrylic on canvas

This large-scale painting hung across from the staircase in the Library, draws its reference from hundreds of documentary photographs of Milton Keynes and shows local estates and local people. The library also displays a range of pieces of work by these artists and others including several that are linked to the history of the area.

Catwalk, 1977. **City Centre 1**, 1977. *Stephen Gregory*

Acrylic on canvas

Stephen Gregory was artist in residence in Milton Keynes between 1977-79. These paintings hang in the public stairwell of the Council's Civic offices, they examine the building of the new town and celebrate its contemporary architecture.

Some Day, 1984. *Boyd and Evans*

Acrylic on canvas

In 1982 Fionnuala Boyd and Les Evans were invited to Milton Keynes as artists in residence; they have lived and worked in the city ever since. Some Day, which hangs in the Central Library, shows scenes from life in the 'new-town' of Milton Keynes.

The Conversation, 1995. *Nicolas Moreton* **Kilkenny black fossil limestone and bronze**

The Conversation consists of two figures in conversation, raised from the ground on a plinth, away from the bustle of the people below. The plinth is their table, an intimate and private space elevated above the rest of the world.

map ref: A9



map ref: A10 A11



map ref: A12



map ref: A13



ARTWALKS

map ref: A14



The Meeting, 1995. *Nicolas Moreton* Birds eye Derbyshire fossil limestone and bronze

The outer panels Dawn and Reflection shows a man and woman separately contemplating the day's events. The Cup (middle panel) is described by the artist as showing 'a man and woman sharing thoughts and wishes, symbolised by the sharing of a drink from the same cup.'

map ref: A15



Octo, 1980. *Wendy Taylor* Stainless steel, water

Octo's twisting ribbon of stainless steel makes a figure of eight. The sculpture is based on a Möbius strip, a mathematical term describing a continuous surface created by twisting a long rectangular strip through 180° and joining the ends. The form does not have an inside or an outside.

map ref: A16



City Church Cross, 1991. *Alan Evans* Steel

This simple cross can be viewed from 360° and consists of 8 blades wrapped together with steel. The artist reflects the ecumenical nature of the church - 'the coming together of different denominations, the binding together of the elements whilst still retaining their individual identity.'

map ref:
A17 A18 A19



3B Series No 5, 1966-68

2M series No 4, 1960s

3B series No 2, 1968-69.

Bernard Schottlander

Painted steel

These large brightly coloured abstract sculptures are based on simple geometric forms. The titles relate to the artist's initials (BMS) and he enjoyed the fact that MS could also be seen as an abbreviation of mild steel.

Lightflow, 2007. *Peter Freeman* Digital LEDs and mirror stainless steel

The two 4m vertical towers, located at opposite corners of the Hub's square, use colour and movement inspired by the reflections of light on water. The towers are interactive, allowing anybody to choose a different light effects using one of six text commands:-Sparkle, Rainbow, Splash, Blue, Flow, Ripple.

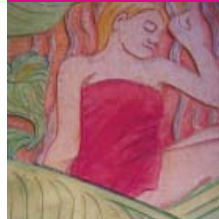
map ref: A20



Winter Garden Panels, 1988. *Jeremy Turner, Mark Adams and Christine Tacq* Sycamore and watercolour

This carved wooden artwork clads a 8 x 4 ft column within the Winter Gardens. Each of the four faces of the column is based on a theme relating to places within the Winter Garden - the garden, the health club, the restaurant and a milk bar, which was never built.

map ref: A21



The Space Between, 1992. *Eilis O'Connell* Patinated bronze with fibre optic elements

Based on ancient Celtic boundary markers and the Ogham stones of pre Christian Ireland. The artist describes the relationship between the space and her sculpture: 'Exchange Square is a perfectly proportioned square composed of right angles and straight lines. To contrast with this rectilinearity, the sculpture is made up of curved forms.'

map ref: A22



Essence, 1982. *Wendy Taylor*

Bronze

The artist describes her work as being 'surrounded by a wide selection of shrubs which give a secret air to the area, providing a complete contrast to the bold outlines of Milton Keynes' avenues. The soft enfolding lines of the sculpture are a response to the intimacy of the enclosed environment.'

map ref: A23



ARTWALKS

map ref: A24



Acorns and Leaves, 2000. Tim Ward Stainless steel

Tim Ward's sculpture of acorns relate to the location under the old oak tree in the middle of the Midsummer Place shopping centre, now also occupied by the Concrete Cows.

map ref: A25



Concrete Cows, 1978. Liz Leyh Concrete and paint

The original concrete cows made in 1978 by US artist Liz Leyh with the help of local schoolchildren. The cows have been relocated around the city including the Hockey Stadium in 2007 where they became a mascot of MK Dons. They are currently located by the oak tree in Midsummer Place, whilst a set of replica cows is at Bancroft.

map ref: A26



Midsummer Place Glass, 2000. Anne Smyth Coloured, carved and etched glass

Designed around Milton Keynes' geometric grid system, using the architect's original road models for reference. Woven into the grid are images of historical and current activity such as the geometric patterns from the Roman Mosaic found at Bancroft. Enigma from Bletchley Park, train wheels from Wolverton and the Grand Union Canal.

map ref: A27



Frog Clock, 2000. Kit Williams Mixed materials, mechanical

The clock is opposite the Midsummer Place Glass by Anne Smyth. It performs on the hour, and is very popular with families, as the performance includes music and culminates in the frog blowing bubbles onto the crowd below. The clock weighs 4 tonnes, and is believed to be one of Britain's biggest animated feature clocks.

Sitting on History, 1996. Bill Woodrow Bronze

The ball and chain refers to the book as 'captor of information' from which we cannot escape. Woodrow proposes that although we absorb knowledge from history, it doesn't necessarily change our behaviour.

map ref: A28



Vox Pop (The Family), 1988. John Clinch Bronze

A shortened form of 'vox populi' a Latin phrase meaning the voice of the people. Clinch's work celebrates ordinary members of the public rather than the rich and famous. The sculpture was originally intended to show the diversity of people needed to make Milton Keynes a great city.

map ref: A29



Flying Carpet, 1989. Dream Flight, 1989. High Flyer, 1989. Philomena Davis Bronze (in planters in Silbury Arcade)

This series of sculptures focus on the theme of flight. The artists describes: 'they depict man's fantasy with flight and escapism, in particular, the sorts of escapist dreams that come to us in childhood and adolescence.'

map ref: A30 A31 A32



A Mighty Blow for Freedom: ** the Media, 1988. Michael Sandle** Bronze

Michael Sandle's work is a critique of the media, taking the logo of a well-known film company as its starting point. The strongarmed man hitting a gong in the logo is replaced by a helmeted androgynous figure swinging an axe to smash a television.

map ref: A33



ARTWALKS

map ref: A34



Xscape, 2000. *Diane Maclean*

Polished stainless steel

Maclean says: 'The sculpture is a meeting place, a resting place, an amusement - people see their distorted reflections in it (fat or thin) - and the surroundings are reflected like abstract paintings, always changing according to where the viewer is'.

map ref: A35



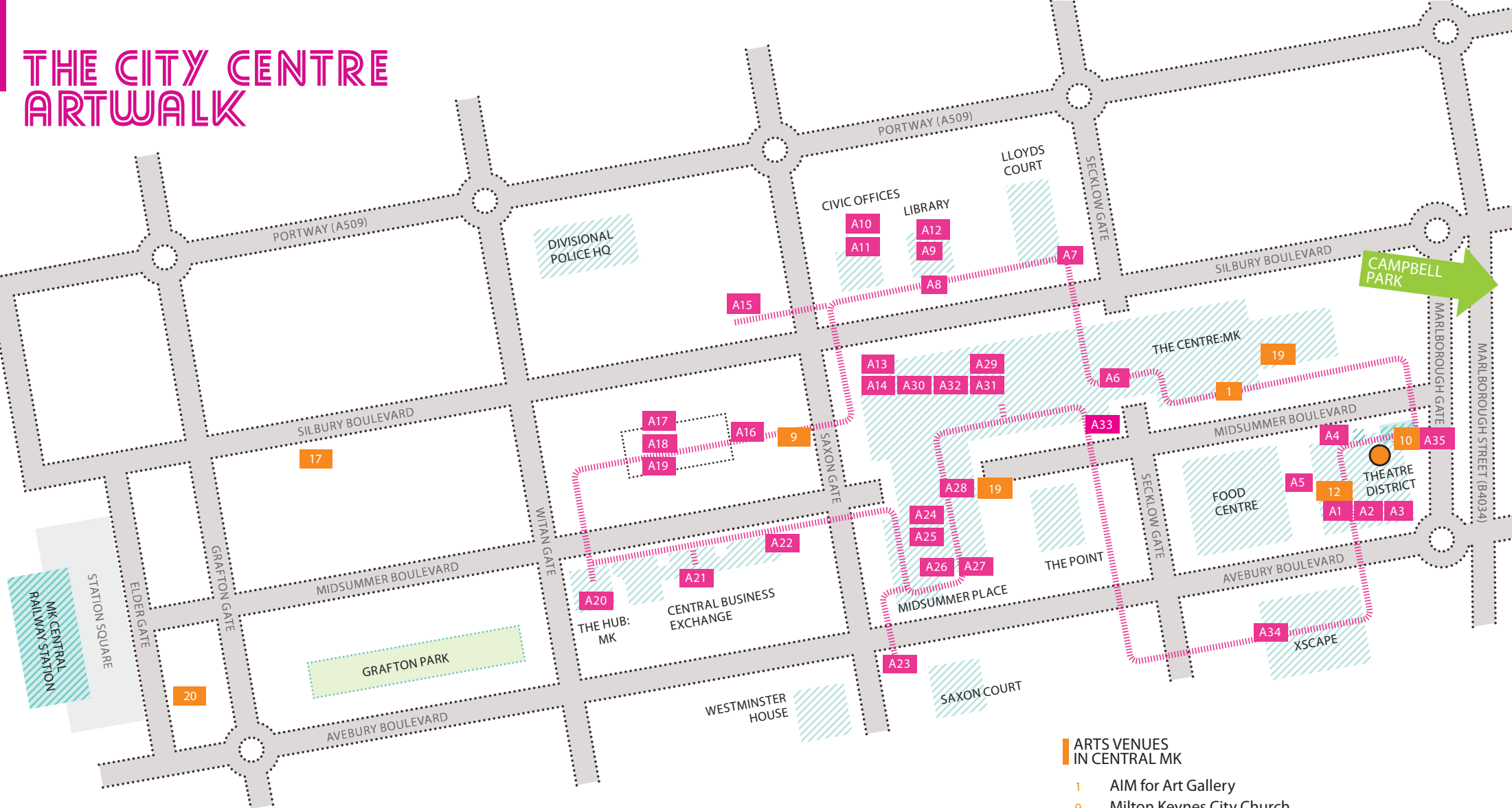
The Object, 1995-7. *Dhruva Mistry*

Stainless steel

Dhruva Mistry has created a curious architectural structure. Although there seems to be an entrance, physical entry is impossible, and as you move around the sculpture, perspectives seem to distort.

From time to time artworks may be unavailable to the public due to maintenance, artwork loans, relocation and building development.

THE CITY CENTRE ARTWALK



* This mark indicates that artworks are situated inside a building. Access may be restricted by opening hours.

- | | | | |
|-----------------------|--|---------------------------|---|
| A1 Moon Drawing* | A5 Paparazzi | A15 Octo | A26 Midsummer Place Glass* |
| A2 Wallwork* | A6 Circle of Light* | A16 City Church Cross | A27 Frog Clock* |
| A3 Electric Sheep* | A7 Black Horse | A17 3B Series No 5 | A28 Sitting on History* |
| A4 Dangerous Liaisons | A8 The Whisper | A18 2M series No 4 | A29 Vox Pop (The Family)* |
| | A9 Fiction, Non-Fiction and Reference* | A19 3B series No 2 | A30 Flying Carpet* |
| | A10 City Centre 1* | A20 Lightflow | A31 Dream Flight* |
| | A11 Catwalk* | A21 Winter Garden Panels* | A32 High Flyer* |
| | A12 Some Day* | A22 The Space Between | A33 A Mighty Blow for Freedom: **** the Media |
| | A13 The Conversation | A23 Essence | A34 Xscape |
| | A14 The Meeting | A24 Acorns and Leaves* | A35 The Object |
| | | A25 Concrete Cows* | |

ARTS VENUES IN CENTRAL MK

- 1 AIM for Art Gallery
- 9 Milton Keynes City Church
- 10 Milton Keynes Gallery
- 12 Milton Keynes Theatre
- 17 University Centre Milton Keynes Galleries
- 19 Fringe MK
- 20 The Buszy

ART IN CAMPBELL PARK

There are a number of artworks to be discovered in Campbell Park. You can get more information about these by visiting www.milton-keynes.gov.uk/arts

Community Wellbeing, Arts Team
Saxon Court,
502 Avebury Boulevard,
Central Milton Keynes
MK9 3HS

