

User Guide for www.roadworks.org



www.milton-keynes.gov.uk

This short guide will tell you how to get the most from www.roadworks.org so you can view what works are coming up across MK over the next few weeks.

It will also explain how to search for a specific road, dates, the type of work being carried out e.g. pothole repairs or street lighting.

Please note that the website www.roadworks.org is updated every 30 minutes however some works may be subject to changes e.g. if there has been a road accident or bad weather.

www.roadworks.org is not an MK Council owned website but as the Highways Authority for MK Borough, our information is displayed on there for public use.

M18048

What is www.roadworks.org?

The website is an information tool to find out what roadworks are taking place in the UK.

It shows road closures and temporary restrictions such as an events which may involve a road closure.

How does it help me?

By checking what is planned for a route or area you can avoid any issues that may affect your particular journey.

It's also useful for regular road users like taxi firms or haulage companies to check if their routes may be affected by a diversion or extra traffic.

Does it show everything?

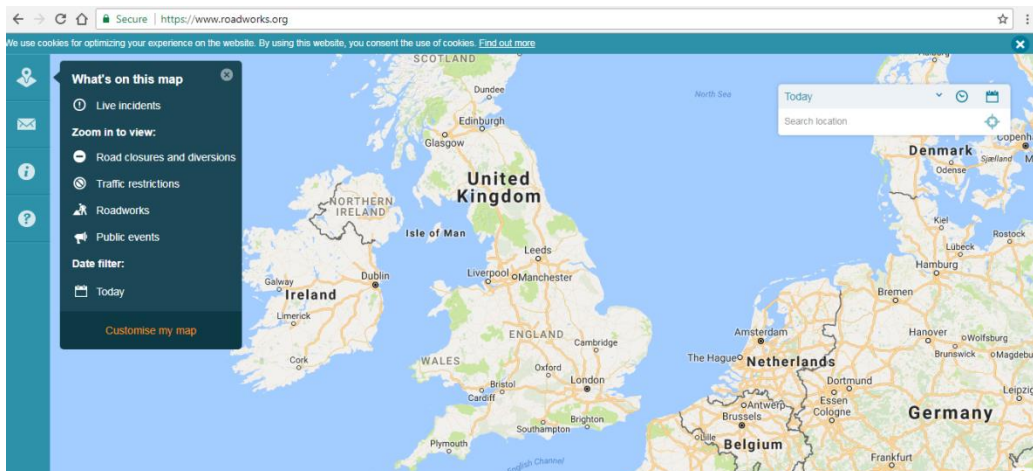
The site will show the majority of works planned for the road network however there sometimes might be reactive or emergency works that need to take place urgently which may not appear on here.

It's a free, useful tool to find out what is happening in your area and if any planned works, diversions or closures will have an impact on your travel arrangements.

How to get started using www.roadworks.org

To find your chosen location...

1. Go to: www.roadworks.org
2. In the box at the top right of the screen type in the location you want to search e.g. Bletchley or Stony Stratford
3. There will be pop up suggestions for the location underneath the search box
4. Icons will appear on the map showing planned works for today's date
5. You can search using a postcode or place name
6. To zoom in on an area click on the + button or to zoom out, click on the – button. You can also use the Hand (select tool) to move across the map to view other areas.

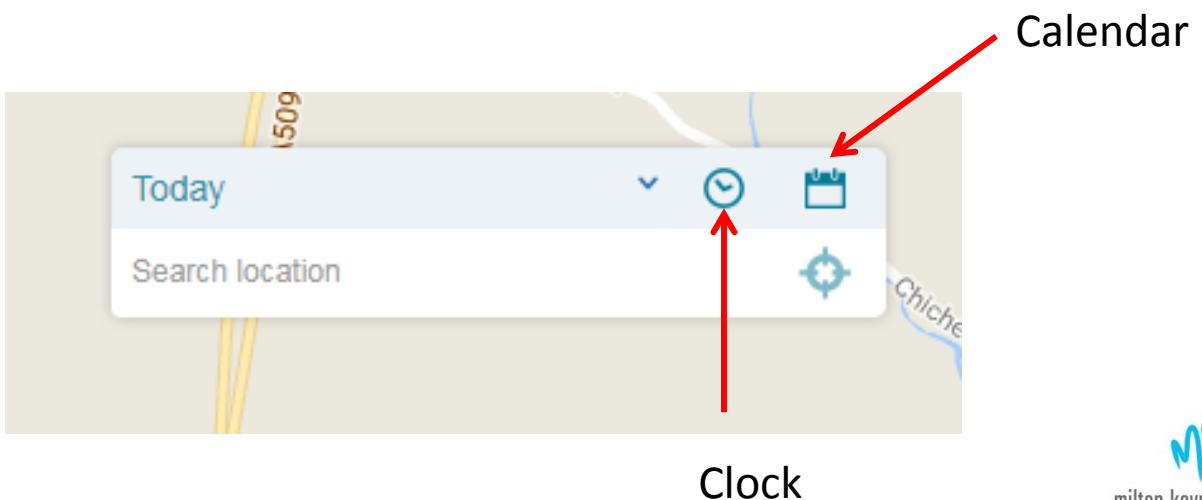


How to get started using www.roadworks.org

To find your chosen date or date range and time...

The icons displayed will be for works happening on today's date – to search for a specific date or date range you should:

1. Click on the Calendar icon in the search text box
2. Select or enter the dates you want to search for
3. You also have the option of selecting a time too – just click on the Clock icon to add a from and to time.
4. Planned works within those dates (and times) will appear as icons on the map for your chosen location.
5. To view the information about the works, use your cursor (arrow) to hover over the icon, a summary of information will appear. To read more click on the icon.



What does the information box show?


The information behind each icon shows the type of work being carried out, who is doing the work and a time frame for the works so you can see when it will begin and is due to be completed.

Roadworks, delays unlikely

🕒 4 May - 9 May

📍 Brockwell, Newport Pagnell, Milton...

Responsibility for these works

Anglian Water 

Information for Road Users

Location: Brockwell, Newport Pagnell, Milton Keynes

Traffic lights, etc: Traffic control (give and take)

Information for Operational Teams

Highway Authority: [Milton Keynes Borough Council](#)

Location: o/s 8

Description: Communication Pipe Repair

Works ref: AD03254866471

What's on this map

- 🚨 Live incidents
- 🚧 Road closures and diversions
- 🚦 Traffic restrictions
- 👷 Roadworks
- 📣 Public events

Date filter:

- 📅 Today

[Customise my map](#)

Other ways to search

You can also filter your search by using the blue box on the top left of the screen. This allows you to filter by categories like closures or live incidents.