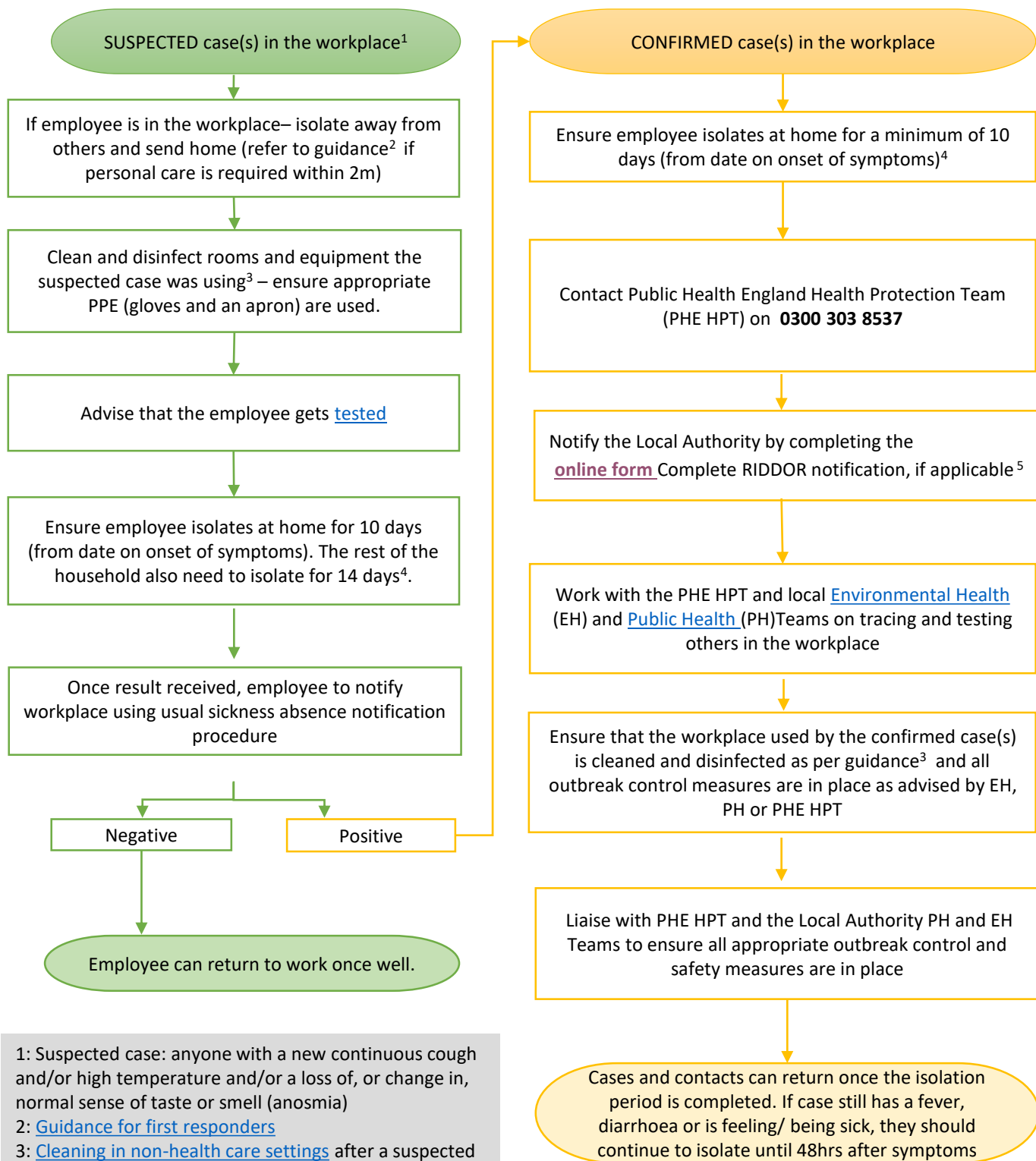


# Guidance for management of Covid-19 in Workplaces (August 2020)

- If you have any general questions or concerns, please contact the [Health and Safety Executive](#) or Public Health England Health Protection Team [EoE.CRC@phe.gov.uk](mailto:EoE.CRC@phe.gov.uk)
- Government COVID-19 workplace guidance can be accessed [here](#) and local guidance [here](#)



- 1: Suspected case: anyone with a new continuous cough and/or high temperature and/or a loss of, or change in, normal sense of taste or smell (anosmia)
- 2: [Guidance for first responders](#)
- 3: [Cleaning in non-health care settings](#) after a suspected or confirmed case
- 4: [Stay at home guidance](#)
- 5: [Reporting dangerous occurrence](#) and [Report of a disease](#) under RIDDOR
6. [NHS track and trace guidance for workplaces](#)