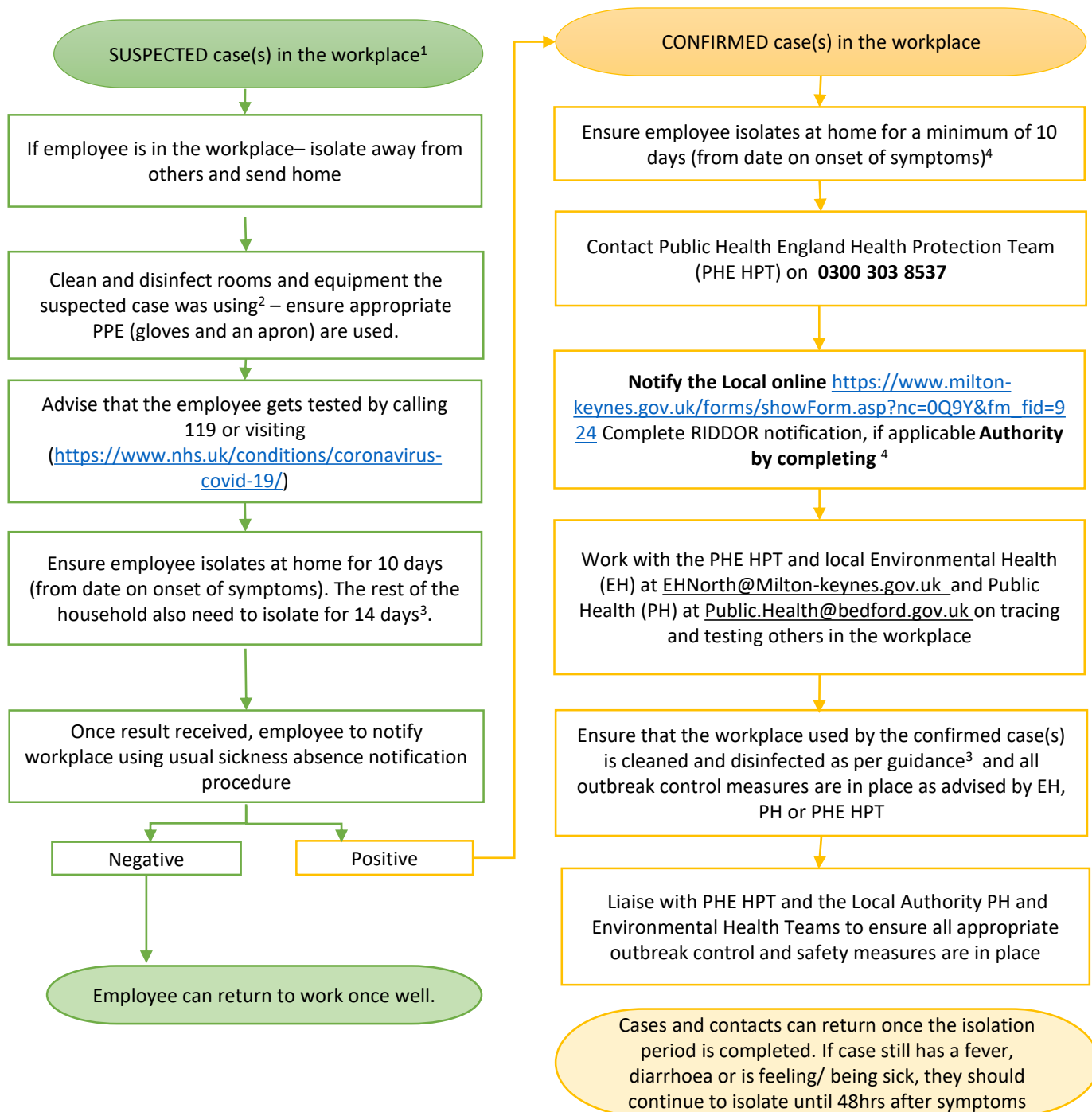


Guidance for management of Covid-19 in Workplaces (August 2020)

- If you have any general questions or concerns, please contact the Health and Safety Executive (<https://www.hse.gov.uk/contact/index.htm>) or Public Health England Health Protection Team (EoE.CRC@phe.gov.uk)
- Government COVID-19 workplace guidance can be accessed at <https://www.gov.uk/guidance/working-safely-during-coronavirus-covid-19> and local guidance at <https://www.milton-keynes.gov.uk/health-and-wellbeing-hub/work-well-mk/improving-staff-well-being>



1: Suspected case: anyone with a new continuous cough and/or high temperature and/or a loss of, or change in, normal sense of taste or smell (anosmia)

2: <https://www.gov.uk/government/publications/covid-19-decontamination-in-non-healthcare-settings/covid-19-decontamination-in-non-healthcare-settings>

3: <https://www.gov.uk/government/publications/covid-19-stay-at-home-guidance/stay-at-home-guidance-for-households-with-possible-coronavirus-covid-19-infection>

4. <https://notifications.hse.gov.uk/riddorforms/Disease>

5. <https://www.gov.uk/guidance/nhs-test-and-trace-workplace-guidance#about-the-nhs-test-and-trace-service>