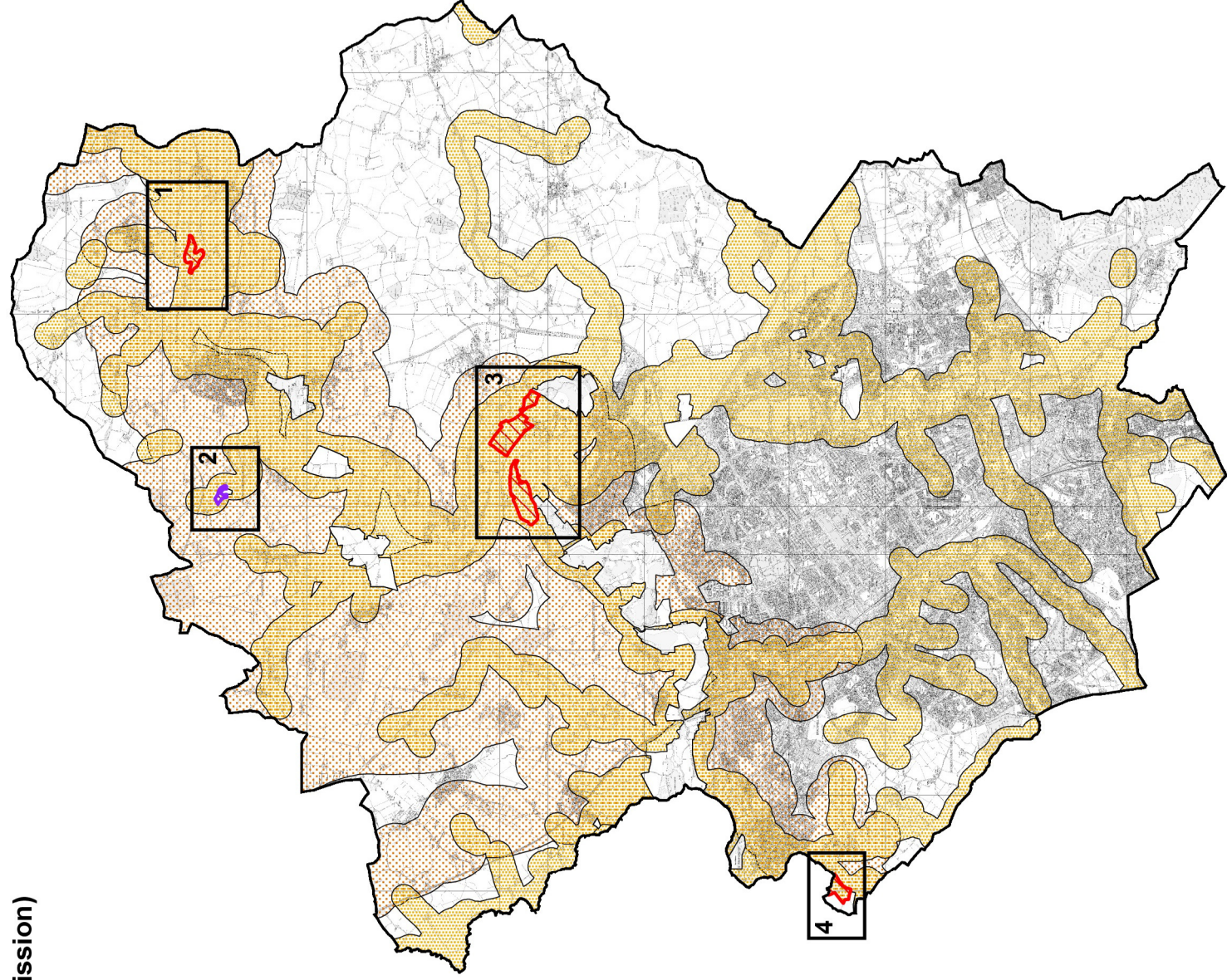








Milton Keynes Minerals Local Plan

Policies Map

(Submission)



Scale 1:75,000

- | | | | |
|---|--|---|---|
|  | Boundary of Minerals Local Plan area |  | Inset map with relevant map number |
|  | Mineral locations - Policy 3 |  | Sand and gravel safeguarding area - Policy 18 |
|  | Mineral locations - Policy 4 |  | Limestone safeguarding area - Policy 18 |
| | Sites for the provision of sand and gravel | | |
| | Mineral locations - Policy 18 | | |
| | Site for the provision of building stone | | |