

Sessions for parent/carers and children

Monday

Stay and Play	A fun session for you and your child/ren to enjoy, lots to do and to explore inside and out.	10.00am - 11.30am
Little Feet, Big Leaps	This school readiness group is to help your children have the best possible start to their school life. This group is by invitation only, please speak to a Team Member if you'd like to attend	12.30pm - 2.00pm
Let's Interact and Play	A fun interactive group to support your child's early communication and talking through play - This group is by invitation only, please speak to a Team Member if you'd like to attend.	1.30pm - 2.30pm

Tuesday

Little Explorers	This under 1's session is perfect for those little feet who love to explore.	9.30am - 10.15am
Little Daisies	Stay and Play for parents under the age of 25. Come and join us for snacks, chat and play opportunities for your children.	10.30am - 12.00 noon
Soca Tots	Soccer specific, multi developmental play programme for children and parents. Please call ahead to book a space.	1.45pm - 2.30pm
Toddler Time	Come and join Annette for a fun, lively, music and movement session	2.00pm - 2.45pm

Wednesday

Mucky Pups	This is an exciting session where your babies and children will love getting messy. We advise you bring a change of clothes. £1.00 contribution welcome.	10.00am - 11.00am
Well-Being Wednesday	Come along to this adult session for a chat with our team, a hot drink, some arts and crafts and some well earned you time	10.30am - 12.00 noon
Soft Play	A fun session for you and your child/ren to enjoy. Under 3's only.	1.30pm - 2.30pm
'Young at Heart' Over 55's Cafe	A friendly social group for anyone over 55. Come along for a chat and to play games.	1.30pm - 3.00pm

Thursday

Mini Movers	Bring your under 2's for a fun packed session featuring dance, soft play, rhymes much more.	10.00am - 11.00am
Stay and Play	A fun session for you and your child/ren to enjoy, lots to do and to explore inside and out.	1.30pm - 3.00pm

Data Protection Privacy Statement

We collect and use information about you so that we can provide you with the best services possible. Full details about how we use this data and the rights you have around this can be found at www.milton-keynes.gov.uk/cafcprivacy. If you have any data protection queries, please contact the Data Protection Officer at data.protection@milton-keynes.gov.uk

Friday

Baby Clinic and Baby Group	Health Visitors available for these sessions. Baby Group for 0-12 months. Come and meet friends and ask health questions.	9.30am - 11.30am
-----------------------------------	---	------------------



Saturday Dad's Group

The 2021/22 tour begins...

The 2019 tour was such a success: it's coming back once again.

This is a call to all dads, grandads, male carers, uncles and big brothers to come along to any of the sessions below to play with their young person in a safe, supportive and creative environment.

Saturday 25 September 2021	9.30am to 11.00am	Conniburrow Children's Centre, Conniburrow
Saturday 2 October 2021	9.30am to 11.00am	Daisychain Family Centre, West Bletchley
Saturday 9 October 2021	9.30am to 11.00am	Hedgerows Family Centre, Netherfield
Saturday 16 October 2021	9.30am to 11.00am	Hummingbird Children's Centre, Broughton
Saturday 6 November 2021	9.30am to 11.00am	Little Owls Children's Centre, Oxley Park
Saturday 13 November 2021	9.30am to 11.00am	Moorlands Family Centre, Beanhill
Saturday 20 November 2021	9.30am to 11.00am	Pebbles Children's Centre, Fishermead
Saturday 27 November 2021	9.30am to 11.00am	Rainbow Children's Centre, Bradville
Saturday 4 December 2021	9.30am to 11.00am	Seedlings Children's Centre, Grange Farm
Saturday 11 December 2021	9.30am to 11.00am	Squirrels Children's Centre, Stantonbury
Saturday 15 January 2022	9.30am to 11.00am	Sunshine Children's Centre, Furzton
Saturday 22 January 2022	9.30am to 11.00am	Robins Children's Centre, Heelands
Saturday 29 January 2022	9.30am to 11.00am	Rowans Family Centre, Fullers Slade
Saturday 5 February 2022	9.30am to 11.00am	Saplings Children's Centre, Central Bletchley
Saturday 26 February 2022	9.30am to 11.00am	Windmill Children's Centre, New Bradwell
Saturday 5 March 2022	9.30am to 11.00am	Tickford Meadow Children's Centre, Newport Pagnell

Any enquiries, please contact daisychain.childrenscentre@milton-keynes.gov.uk



Triple P – Positive Parenting Programme

Coming in Jan/Feb 2022 on Tuesday afternoons

This course is designed to help parents improve their parenting skills and build relationships with their children. This group is by invitation only, please speak to a Team Member if you'd like to attend.

Information

Private room hire

Did you know...? That our centres are available for private hire? They are perfect for parties, meetings and wedding receptions. To find out more details for bookings please contact your local centre.

Parents Courses we offer

- Nurturing Programme
- Speakeasy
- Triple P

Family Support

Family support available for all households. Please ask for further details from the team.

Milton Keynes Council Day Nurseries

Milton Keynes Day Nurseries offer care and education for children from 3 months to school age.

All children are valued and respected and for those who may require a little extra support to meet their full potential will benefit from the excellent early intervention provision.

For Rowans Day Nursery, Fullers Slade contact: 01908 563269 (3 months to school age)

For Playzone Day Nursery, Netherfield contact: 01908-239000 (2 years to school age)

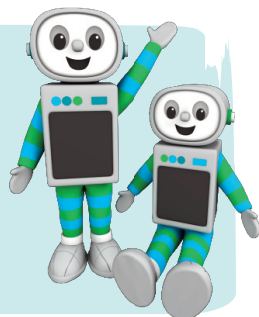
Time for twos

You are automatically eligible for 15 HOURS FREE early education for your three or four year old

You may also be eligible for 30 hours FREE early education for your three or four year old. To find out if you are eligible visit:

www.childcarechoices.gov.uk

Or visit your local Children's and Family Centre for more help.





Healthy Start Vitamins

Healthy Start vitamins coupons can be exchanged at all the centres.

Food Bank

Please speak to a member of staff at your local centre.



MK Together

For information regarding MK Safeguarding Partnership arrangements go to the MK Together website:
www.mktogether.co.uk/

Volunteering

Gain some work experience, job opportunities or just help your local community? If so our Children and Family Centres need you! If you have a few hours to spare your local centre has varying roles available, offering accredited volunteer training and enhance your CV.

Are you registered at your local children's centre? If not, visit:
www.milton-keynes.gov.uk/childrens-centres

Find us on
Facebook



Daisychain Family Centre
Melrose Avenue, Bletchley, Milton Keynes MK3 6PS
T: 01908 641454

M19203 - December 2021



Daisychain Family Centre Programme

Services and support for families and the community

Open Monday to Thursday 8.30am - 4.30pm
and Friday 8.30am - 4.00pm

Daisychain Reach Area:

West Bletchley, Far Bletchley, Granby, Mount Farm, Denbigh North and Denbigh West

www.milton-keynes.gov.uk/childrens-centre

