

# Super Powers

Match up the picture to the description of the renewable energy source



**Energy from waste facilities** extract the energy from items thrown away as rubbish



**Solar energy** is collected from sunlight by using panels placed on the roofs of buildings or solar farms



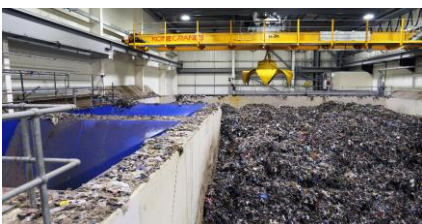
**Hydroelectric power** is a way of harnessing energy from running water. Dams trap water in reservoirs. The water is released and flows downwards with gravity, which spins the turbine to make electricity



**Geothermal energy** is heat from the Earth. Water can be pumped down into hot rock where it is heated. Geothermal energy can be used to produce heat or electricity



Large windmills are called **wind turbines**. When the wind blows, the blades move to spin the turbine which is connected to a generator which generates electricity



**Bio fuel** uses crops or animal waste to create energy. Fast growing crops such as sugar cane, maize and elephant grass are grown to be burnt as fuel.