

- Notes**
1. Do not scale this drawing. All dimensions must be checked/ verified on site. If in doubt ask.
 2. This drawing is to be read in conjunction with all relevant architects, engineers and specialists drawings and specifications.
 3. All dimensions in millimetres unless noted otherwise. All levels in metres unless noted otherwise.
 4. Any discrepancies noted on site are to be reported to the engineer immediately.
 5. Presented model results are illustrative and subject to change.

Key

Floodplain Extents

- 1 in 20-year
- 1 in 100-year
- 1 in 100-year+35%
- 1 in 1000-year

Rev	Date	Details of issue/revision	Drw	Rev
P02	18.12.18	GENERAL UPDATE	RG	JON
P01	28.11.18	PRELIMINARY ISSUE	RG	JON

Issues & Revisions

BWB
CONSULTANCY | ENVIRONMENT
INFRASTRUCTURE | BUILDINGS

- Birmingham | 0121 233 3322
- Leeds | 0113 233 8000
- London | 0207 407 2879
- Manchester | 0161 233 4260
- Nottingham | 0115 924 1100

www.bwbconsulting.com

Client
HB (South Caldecotte) Limited

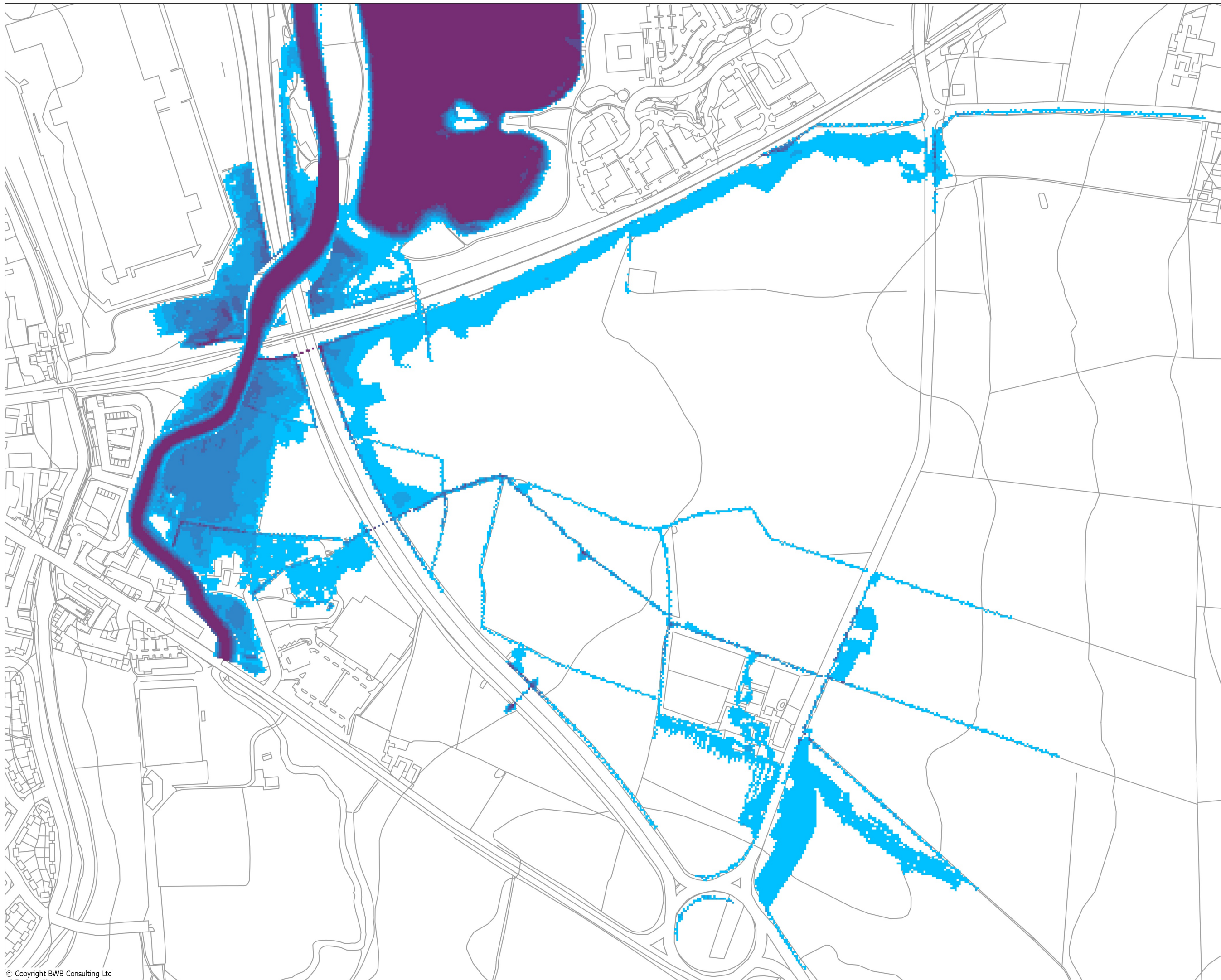
Project Title
South Caldecotte, Milton Keynes

Drawing Title
Floodplain Mapping Baseline Conditions

Drawn:	R Green	Reviewed:	J O'Neill
BWB Ref:	NTS 2682	Date:	28.11.18
		Scale:	A3 1:5000

Drawing Status
PRELIMINARY

Project - Originator - Zone - Level - Type - Role - Number	Status	Rev
SCD-BWB-ZZ-XX-DR-YE-0002	S2	P02



- Notes
1. Do not scale this drawing. All dimensions must be checked/verified on site. If in doubt ask.
 2. This drawing is to be read in conjunction with all relevant architects, engineers and specialists drawings and specifications.
 3. All dimensions in millimetres unless noted otherwise. All levels in metres unless noted otherwise.
 4. Any discrepancies noted on site are to be reported to the engineer immediately.
 5. Presented model results are illustrative and subject to change.

Key

Peak Flood Depths (m)

Lightest Blue	<= 0.25
Light Blue	0.25 - 0.50
Medium Blue	0.50 - 0.75
Dark Blue	0.75 - 1.00
Dark Purple	1.00 - 1.25
Very Dark Purple	> 1.25

Rev	Date	Details of issue/revision	Drw	Rev
P02	18.12.18	GENERAL UPDATE	RG	JON
P01	28.11.18	PRELIMINARY ISSUE	RG	JON

Issues & Revisions

BWB
CONSULTANCY | ENVIRONMENT
INFRASTRUCTURE | BUILDINGS

Birmingham | 0121 233 3322
 Leeds | 0113 233 8000
 London | 0207 407 2879
 Manchester | 0161 233 4260
 Nottingham | 0115 924 1100
www.bwbconsulting.com

Client

HB (South Caldecotte) Limited

Project Title

South Caldecotte, Milton Keynes

Drawing Title

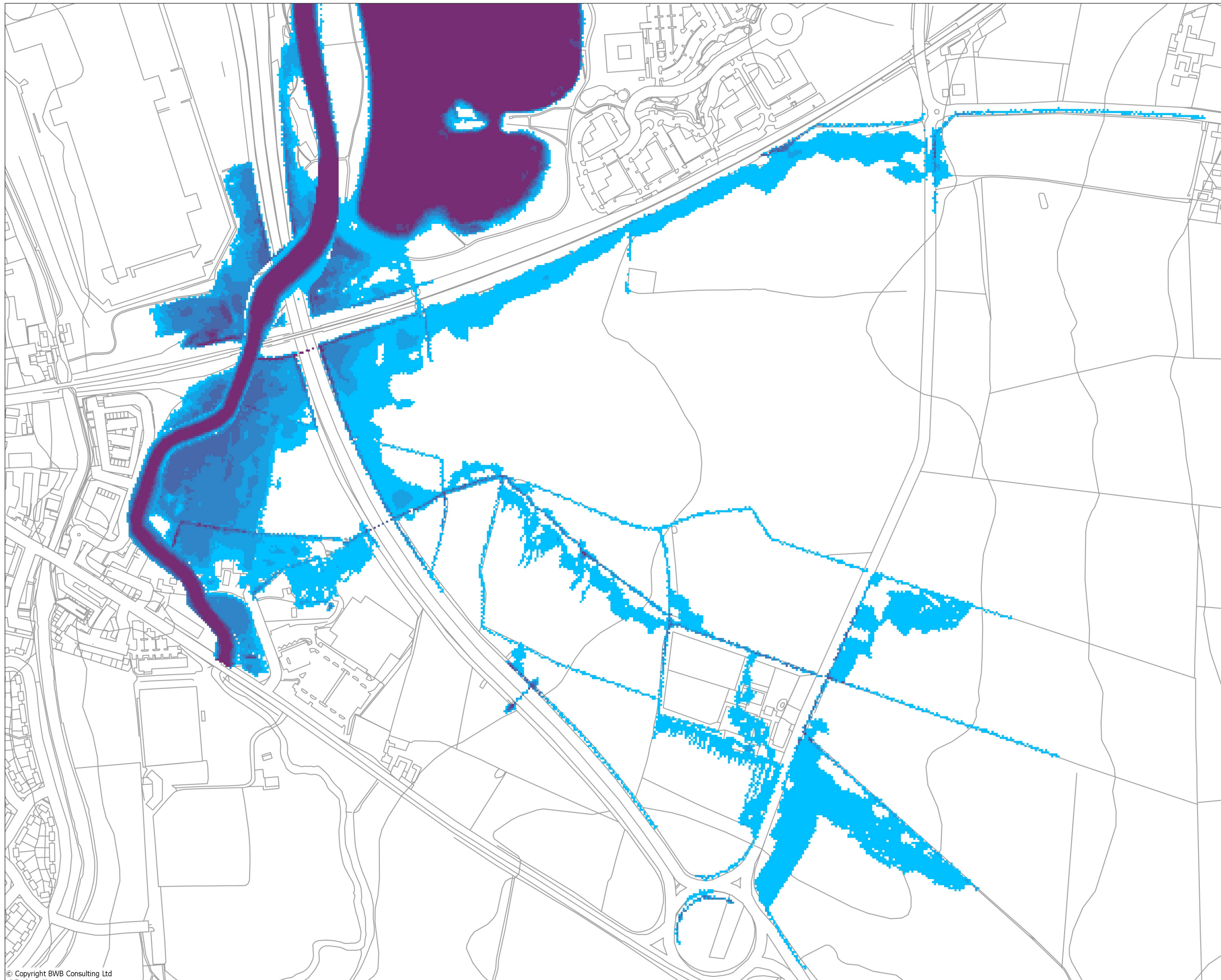
Flood Depths - Baseline Conditions: 1 in 20-Year

Drawn:	R Green	Reviewed:	J O'Neill
BWB Ref:	NTS 2682	Date:	28.11.18
		Scale:	A3 1:5000

Drawing Status

PRELIMINARY

Project - Originator - Zone - Level - Type - Role - Number	Status	Rev
SCD-BWB-ZZ-XX-DR-YE-0010	S2	P02



- Notes**
1. Do not scale this drawing. All dimensions must be checked/ verified on site. If in doubt ask.
 2. This drawing is to be read in conjunction with all relevant architects, engineers and specialists drawings and specifications.
 3. All dimensions in millimetres unless noted otherwise. All levels in metres unless noted otherwise.
 4. Any discrepancies noted on site are to be reported to the engineer immediately.
 5. Presented model results are illustrative and subject to change.

Key

Peak Flood Depths (m)

Lightest Blue	<= 0.25
Light Blue	0.25 - 0.50
Medium Blue	0.50 - 0.75
Dark Blue	0.75 - 1.00
Very Dark Blue	1.00 - 1.25
Dark Purple	> 1.25

Rev	Date	Details of issue/revision	Drw	Rev
P02	18.12.18	GENERAL UPDATE	RG	JON
P01	28.11.18	PRELIMINARY ISSUE	RG	JON

Issues & Revisions

BWB
 CONSULTANCY | ENVIRONMENT
 INFRASTRUCTURE | BUILDINGS

Birmingham | 0121 233 3322
 Leeds | 0113 233 8000
 London | 0207 407 2879
 Manchester | 0161 233 4260
 Nottingham | 0115 924 1100
www.bwbconsulting.com

Client

HB (South Caldecotte) Limited

Project Title

South Caldecotte, Milton Keynes

Drawing Title

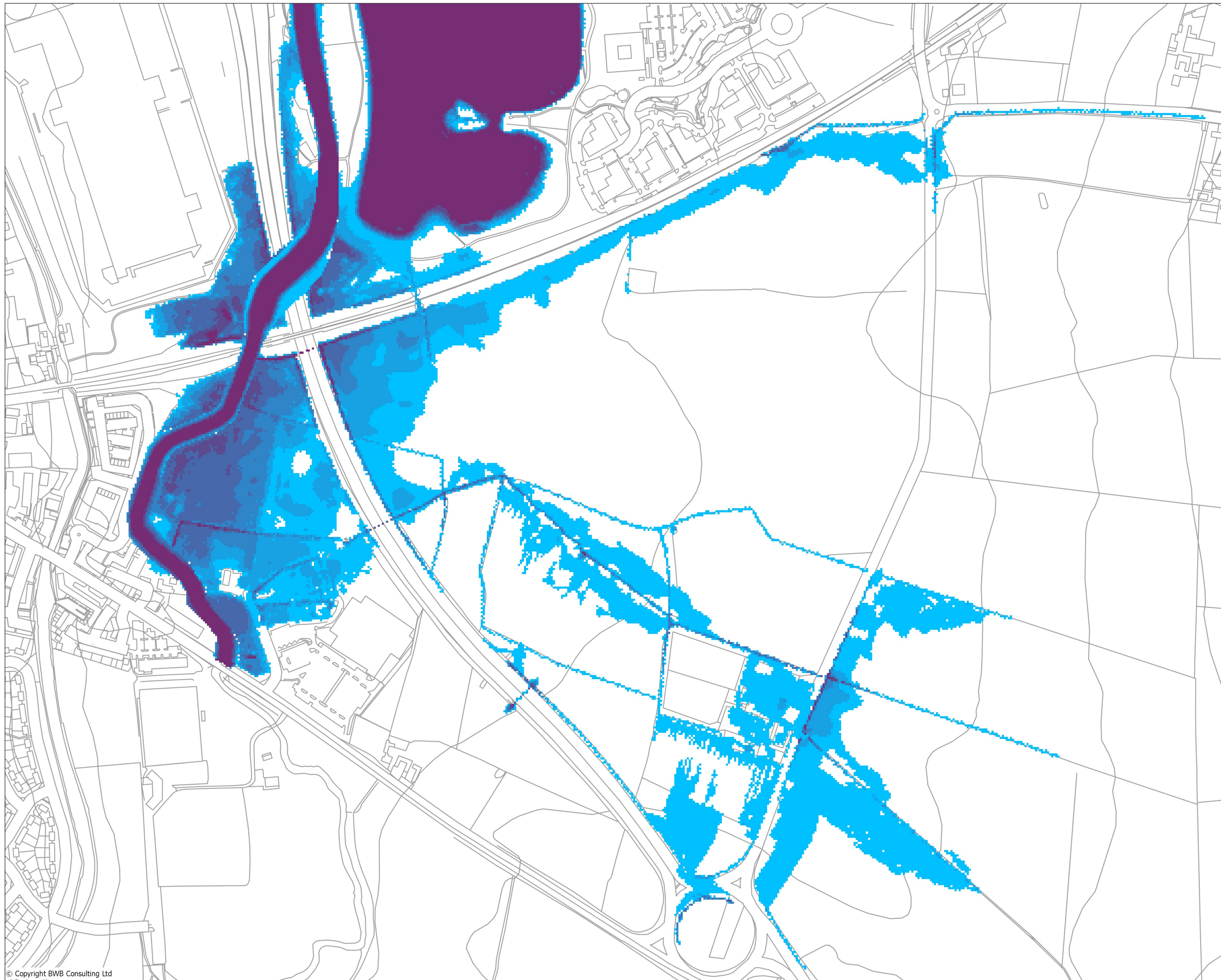
**Flood Depths - Baseline
 Conditions: 1 in 100-Year**

Drawn:	R Green	Reviewed:	J O'Neill
BWB Ref:	NTS 2682	Date:	28.11.18
		Scale:	A3 1:5000

Drawing Status

PRELIMINARY

Project - Originator - Zone - Level - Type - Role - Number	Status	Rev
SCD-BWB-ZZ-XX-DR-YE-0011	S2	P02



- Notes**
1. Do not scale this drawing. All dimensions must be checked/ verified on site. If in doubt ask.
 2. This drawing is to be read in conjunction with all relevant architects, engineers and specialists drawings and specifications.
 3. All dimensions in millimetres unless noted otherwise. All levels in metres unless noted otherwise.
 4. Any discrepancies noted on site are to be reported to the engineer immediately.
 5. Presented model results are illustrative and subject to change.

Key

Peak Flood Depths (m)

Lightest Blue	<= 0.25
Light Blue	0.25 - 0.50
Medium Blue	0.50 - 0.75
Dark Blue	0.75 - 1.00
Very Dark Blue	1.00 - 1.25
Dark Purple	> 1.25

Rev	Date	Details of issue/revision	Drw	Rev
P02	18.12.18	GENERAL UPDATE	RG	JON
P01	28.11.18	PRELIMINARY ISSUE	RG	JON

Issues & Revisions

BWB
CONSULTANCY | ENVIRONMENT
INFRASTRUCTURE | BUILDINGS

Birmingham | 0121 233 3322
 Leeds | 0113 233 8000
 London | 0207 407 2879
 Manchester | 0161 233 4260
 Nottingham | 0115 924 1100
www.bwbconsulting.com

Client

HB (South Caldecotte) Limited

Project Title

South Caldecotte, Milton Keynes

Drawing Title

**Flood Depths - Baseline
Conditions: 1 in 100-Year
+35%**

Drawn:	R Green	Reviewed:	J O'Neill
BWB Ref:	NTS 2682	Date:	28.11.18
		Scale:	A3 1:5000

Drawing Status

PRELIMINARY

Project - Originator - Zone - Level - Type - Role - Number	Status	Rev
SCD-BWB-ZZ-XX-DR-YE-0012	S2	P02