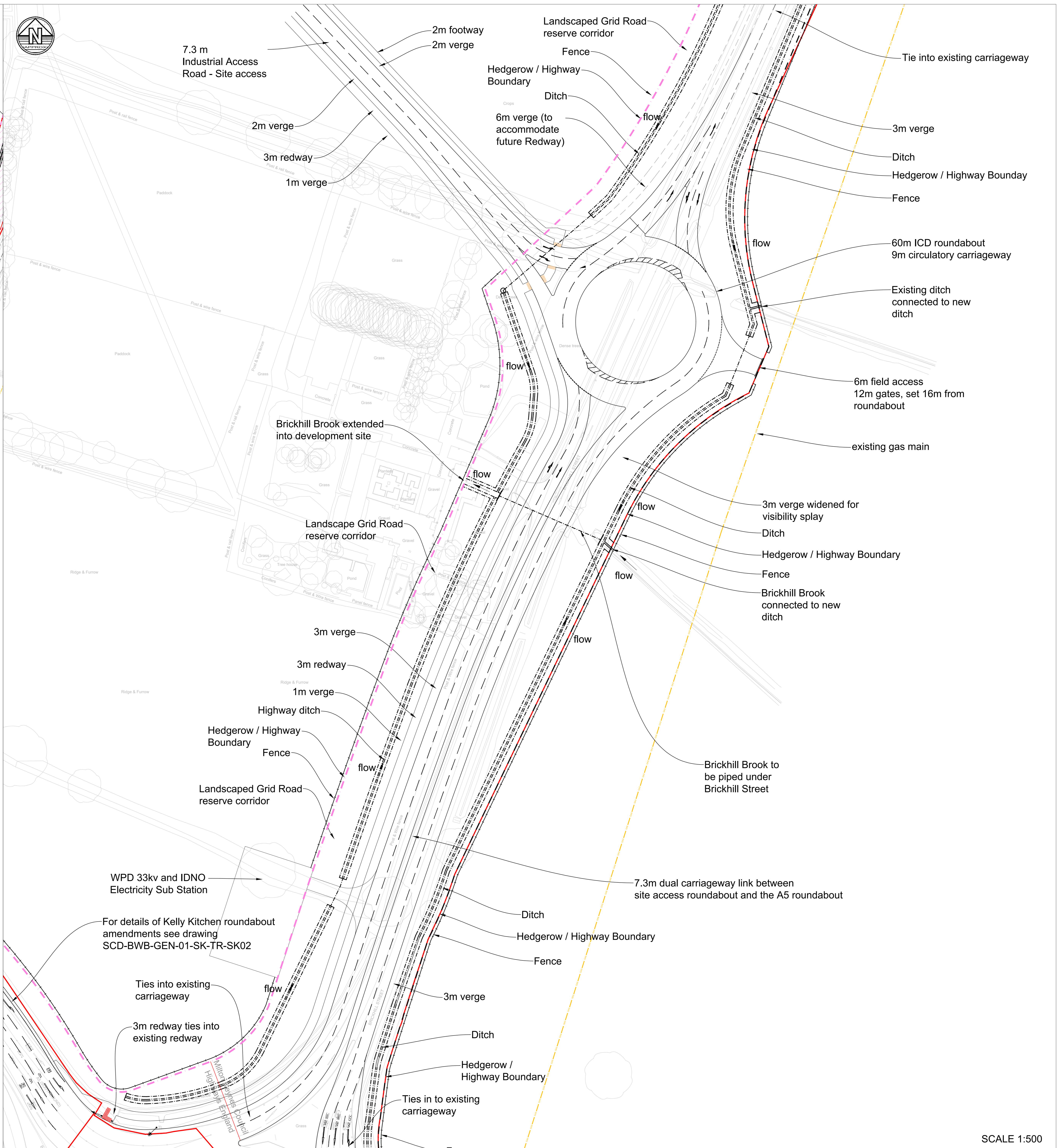


SCALE 1:1000



SCALE 1:500

Notes

- Do not scale this drawing. All dimensions must be checked/verified on site. If in doubt ask.
- This drawing is to be read in conjunction with all relevant architects, engineers and specialist drawings and specifications.
- All dimensions in millimetres unless noted otherwise. All levels in metres unless noted otherwise.
- Any discrepancies noted on site are to be reported to the engineer immediately.

Key Plan

Legend

Issues & Revisions

P12	09.07.20	HE Amendments to Brickhill Street and A5	AJO	MA
P11	13.05.20	Hampton Brook Amendments	AJO	MA
P10	04.04.20	Amended Layout Northern Arm	AJO	MA
P9	18.12.19	Amended Layout	CC	MA
P8	05.07.19	Red Line boundary added	AJO	CH
P7	11.06.19	Roundabout location amended to suit masterplan	AJO	CH
P6	12.03.19	Shading added	HB	CH
P5	12.07.18	Verges and redways added	AJO	CH
P4	10.07.18	Access track added to eastern side of roundabout	AJO	CH
P3	22.06.18	Layout amended	AJO	CH
P2	24.04.18	Layout amended	AJO	CH
P1	19.02.18	Preliminary Issue	AJO	CH
Rev	Date	Details of issue / revision	Drw	Rev

Issues & Revisions

BWB
CONSULTANCY | ENVIRONMENTAL INFRASTRUCTURE | BUILDINGS

Client: **HB (South Caldecotte) Ltd**

Project Title: **South Caldecotte, Milton Keynes**

Drawing Title: **Proposed Site Access Roundabout and Dual Carriageway Link to the A5**

Drawn:	AJ Oakes	Reviewed:	C Holloway
BWB Ref:	NTS 2682	Date:	19.02.18
Scale:	As Shown	Scale:	As Shown

Drawing Status: **PRELIMINARY**

Project - Originator - Zone - Level - Type - Role - Number	Status	Rev
SCD-BWB-GEN-01-DR-TR-001	S2	P12