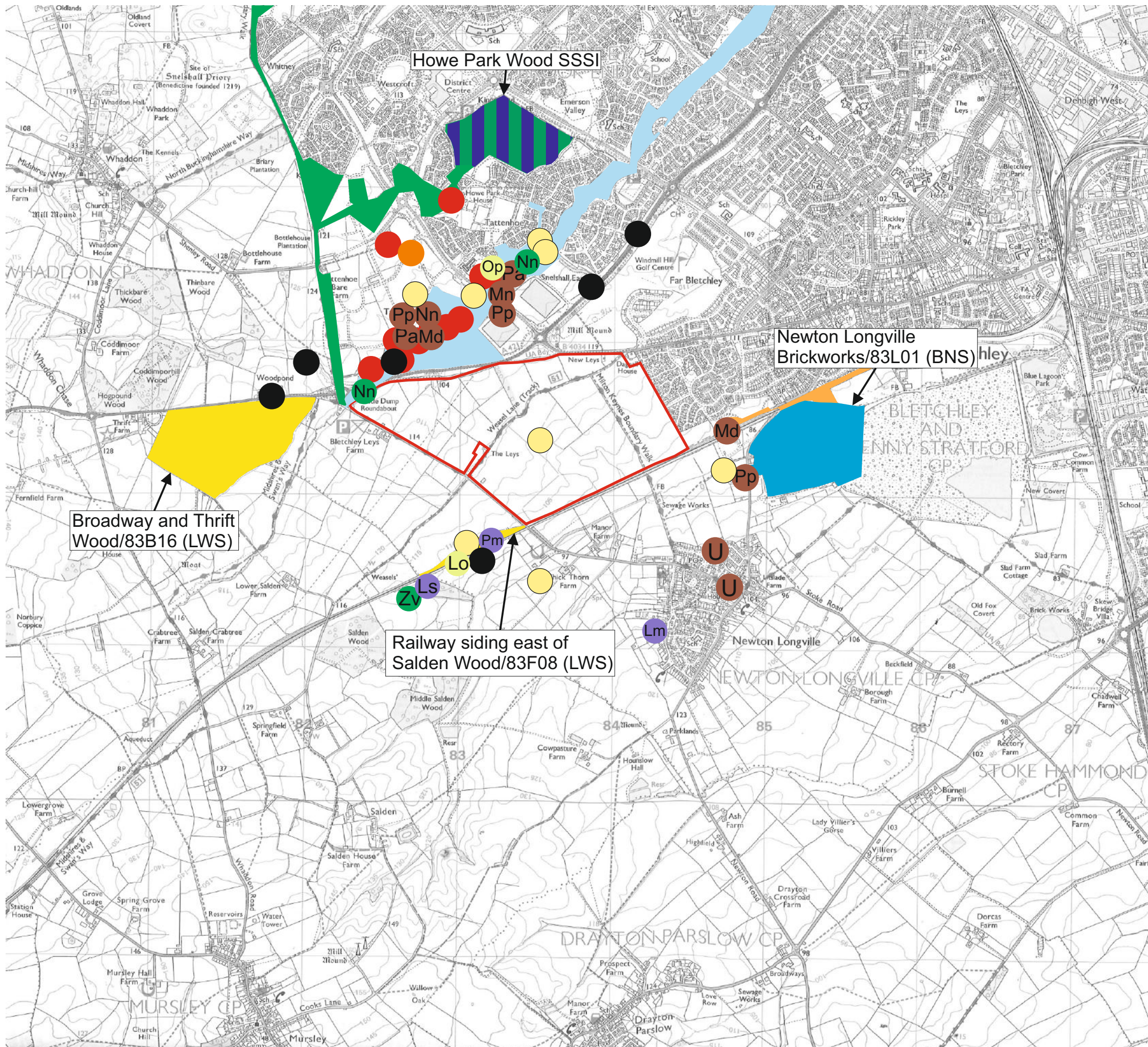


## **Figures**

**Figure 1: Site Location and Consultation Results Plan**

**Figure 2: Phase 1 Habitat Plan**





This drawing is the property of FPCR Environment and Design Ltd and is issued on the condition it is not reproduced, retained or disclosed to any unauthorised person, either wholly or in part without written consent of FPCR Environment and Design Ltd. Ordnance Survey material is used with the permission of The Controller of HMSO, Crown copyright 100018896.

- Site Location
- Site of Special Scientific Interest (SSSI)
- Local Wildlife Site (LWS)
- Biological Notification Site (BNS)
- Milton Keynes Wildlife Corridor (railway)
- Milton Keynes Wildlife Corridor (wetland)
- Milton Keynes Wildlife Corridor (woodland)
- Notable Bird
- Great Crested Newt
- Reptile *Zv* - *Zootoca vivipara* *Nn* - *Natrix natrix*
- Badger
- Notable Invertebrate *Ls* - *Leptidea sinapis* *Pm* - *Pyrgus malvae* *Lm* - *Lasiommata megera*
- Bat *Md* - *Myotis daubentonii* *M* - *Myotis sp.* *Mn* - *Myotis nattereri* *Nn* - *Nyctalus noctula* *Pa* - *Plecotus auritus* *Pp* - *Pipistrellus pipistrellus* *U* - Unidentified
- Brown Hare
- Notable Plant *Lo* - *Lithospermum officinale* *Op* - *Ornithogalum pyrenaicum*

Hallam Land Management,  
Taylor Wimpey UK Ltd, William Davis,  
Connelly Homes and Bellcross Homes  
3126 South West Milton Keynes  
Buckinghamshire

SITE LOCATION AND CONSULTATION  
RESULTS PLAN  
Not to Scale @ A3 AWB / 06.12.2012

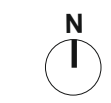
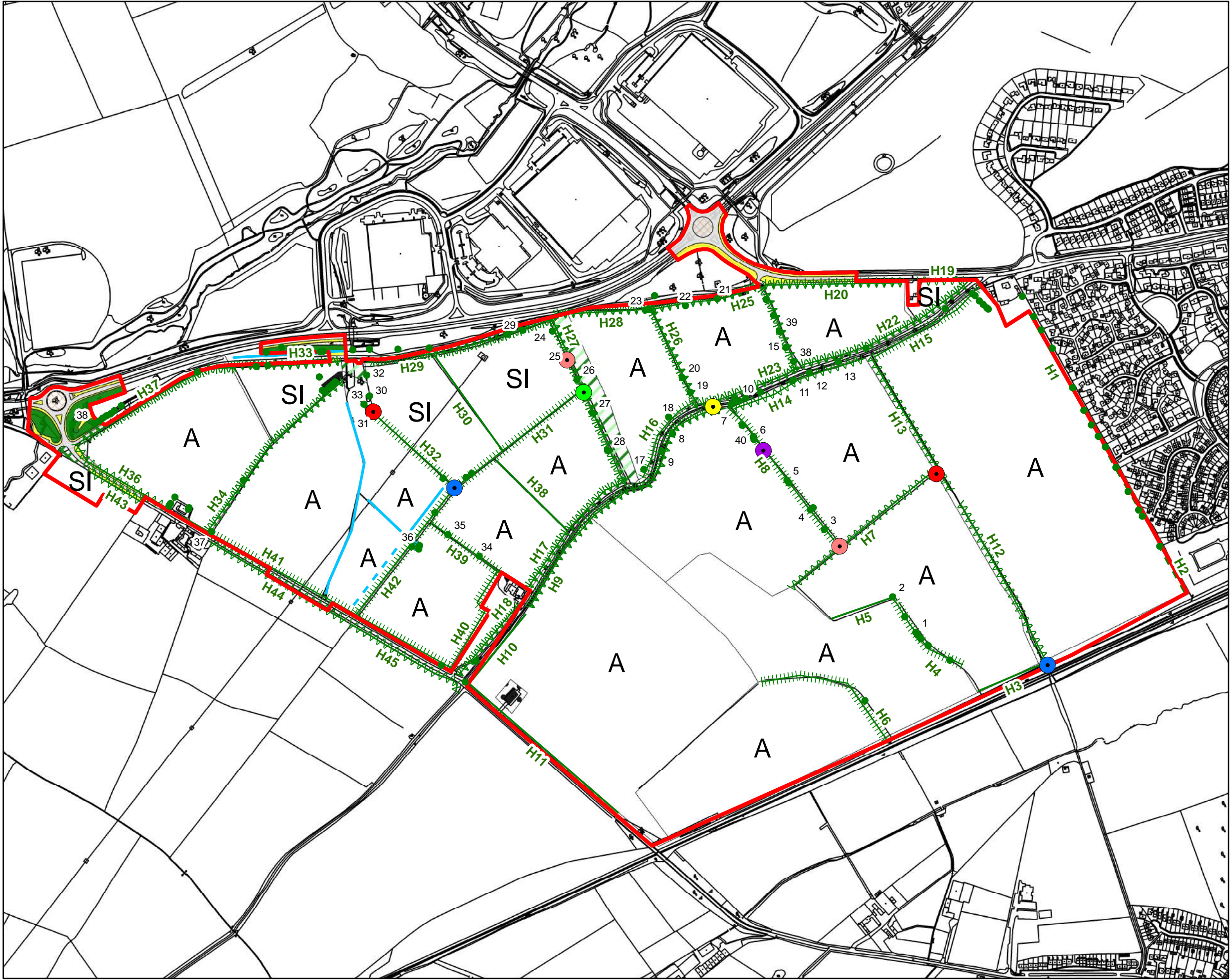


Figure 1







This drawing is the property of FPCR Environment and Design Ltd and is issued on the condition it is not reproduced, retained or disclosed to any unauthorised person, either wholly or in part without written consent of FPCR Environment and Design Ltd.

Ordnance Survey material is used with the permission of the Controller of HMSO, Crown copyright 100018896

### Legend

- Site Boundary
- April
- May
- June
- July
- August
- September

Hallam Land Management,  
Taylor Wimpey UK Ltd, William Davis,  
Connelly Homes and Bellcross Homes

3126 South West Milton  
Keynes Buckinghamshire

PHASE 1 HABITAT PLAN AND  
STATIC DETECTOR LOCATIONS





## **Appendices**

### **Appendix 1: Habitat Suitability Index Assessment**

## APPENDIX 1: HABITAT SUITABILITY INDEX ASSESSMENT

HSI Criteria	P1	P2	P3	P4	P5	P6	P7	P8	P9
Area	A	A	A	A	A	A	A	A	A
Size (m <sup>2</sup> )	1.3	3.8	32	32	32	127	16	191	19
Drying	annually	never	never	never	sometimes	never	rarely	never	sometimes
Shade (%)	80%	40%	30%	60%	60%	30%	20%	30%	10%
Vegetation Cover (%)	10%	30%	20%	10%	60%	20%	20%	70%	40%
Water Quality	poor	moderate	poor	moderate	moderate	moderate	moderate	moderate	moderate
Terrestrial Habitat	poor	moderate	poor	moderate	good	good	good	good	moderate
Fish	possible	minor	possible	possible	possible	major	possible	possible	possible
Fowl	absent	absent	absent	absent	minor	minor	minor	minor	minor
Number of Ponds (1km Radius)	9	9	8	2	6	6	7	7	17
Turbidity (0-5, 0=clear, 5= no visibility)	4	2	4	3	2	4	3	2	3
HSI Score	0.39	0.57	0.53	0.56	0.59	0.42	0.60	0.77	0.57
Predicted Presence	0.03	0.2	0.2	0.2	0.55	0.03	0.55	0.79	0.2
Pond suitability	poor	below average	below average	below average	average	poor	average	good	below average

HSI Criteria	P10	P11	P12	P13	P14	P15	P16	P17	P18
Area	A	A	A	A	A	A	A	A	A
Size (m <sup>2</sup> )	19	8	22	10	8	8	7	32	6
Drying	sometimes	sometimes	annually	sometimes	rarely	rarely	sometimes	annually	sometimes
Shade (%)	10%	10%	40%	10%	7%	0%	25%	5%	0%
Vegetation Cover (%)	30%	30%	95%	60%	20%	10%	70%	80%	50%
Water Quality	poor	moderate	moderate	poor	moderate	moderate	moderate	moderate	moderate
Terrestrial Habitat	moderate	moderate	moderate	moderate	moderate	moderate	moderate	poor	moderate
Fish	possible	absent	absent	absent	absent	possible	absent	absent	absent
Fowl	minor	absent	absent	absent	absent	minor	absent	absent	absent
Number of Ponds (1km Radius)	17	17	17	17	17	17	17	17	17
Turbidity (0-5, 0=clear, 5= no visibility)	4	3	2	4	1	3	3	2	3
HSI Score	0.52	0.61	0.53	0.59	0.64	0.58	0.65	0.51	0.62
Predicted Presence	0.2	0.55	0.2	0.2	0.55	0.2	0.55	0.2	0.55
Pond suitability	below average	average	below average	Below average	average	below average	average	below average	average