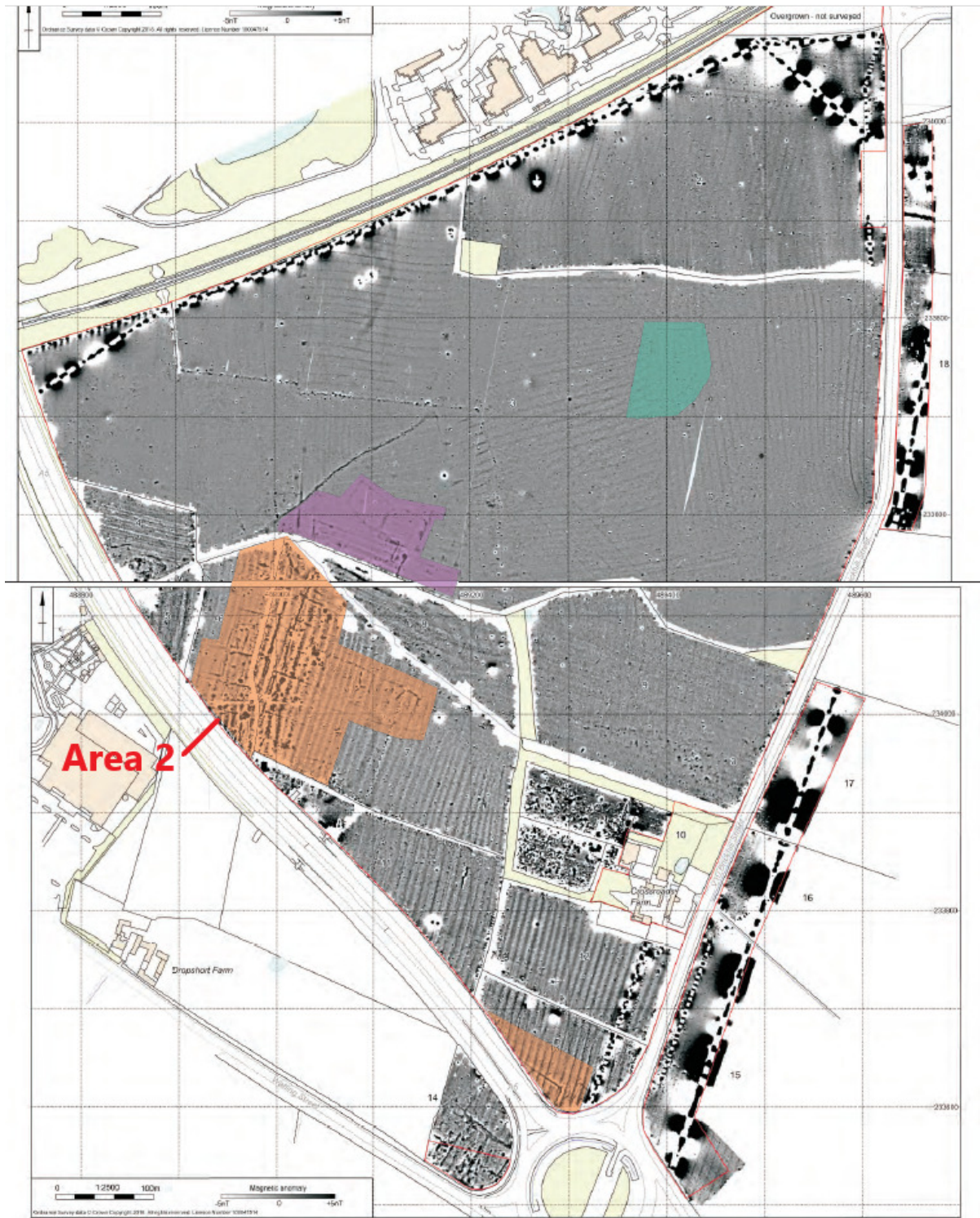


Appendices (those in italics supplied as separate PDF files)

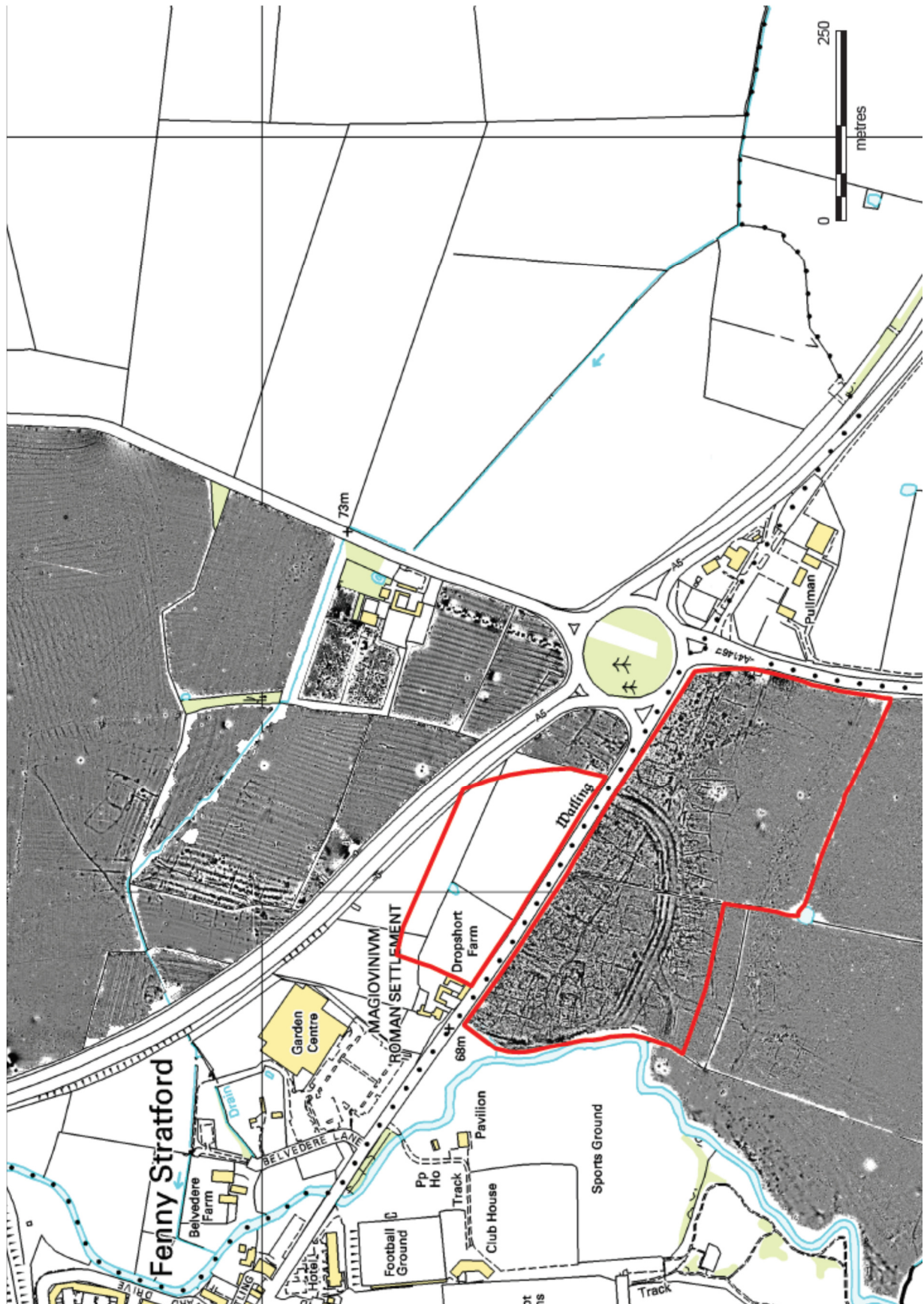
1. Plan showing Area 2 (shaded orange) in relation to the Site and geophysical survey results
2. *GPA2: Managing Significance in Decision-Taking in the Historic Environment -Historic Environment Good Practice Advice in Planning: 2 (Historic England, 2015)*
3. *DMRB LA104: Environmental assessment and monitoring (Highways England, 2019)*
4. *Neal, D, 1987 Excavations at Magiovinium, Buckinghamshire, 1978-80, Records of Bucks 29, 1-124.*
5. *Hunn, A, Lawson, A and Parkhouse, J, 1995, Investigations at Magiovinium 1990–91: The Little Brickhill and Fenny Stratford By-Passes, Records of Bucks 37, 3–66.*
6. Plans showing geophysical surveys on the Site and Eaton Leys in relation to the area of Scheduled Monument
7. *Hannah, D & Daniel, P, 2019, Land at Eaton Leys, Milton Keynes, Buckinghamshire: Post-excavation Assessment and Updated Project Design*
8. *Walford, J, 2014 Archaeological geophysical survey on land at Eaton Leys, Milton Keynes, Buckinghamshire, MOLA Northampton report, 14/217*
9. *Brown, R, 2017, Land at Eaton Leys, Milton Keynes, Archaeological Evaluation Phase 2*
10. *Biddulph, E, Brady, K, Simmonds, A and Foreman, S, 2019, Berryfields: Iron Age settlement and a Roman bridge, field system and settlement along Akeman Street near Fleet Marston, Buckinghamshire, Oxford Archaeology Monograph No. 30, Oxford, p.59*
11. Tables / Matrices used in Appellant’s Environmental Statement
12. Significance Matrix from DMRB LA104
13. *NHLE list entry for Scheduled Monument of Ashton Roman small town (National Heritage List no. 1021454)*
14. *NHLE list entry for Scheduled Monument of Romano-British small town and Late Iron Age settlement at Baldock (National Heritage List no. 1016305)*
15. Plan from Defended Small Towns of Roman Britain project 2018

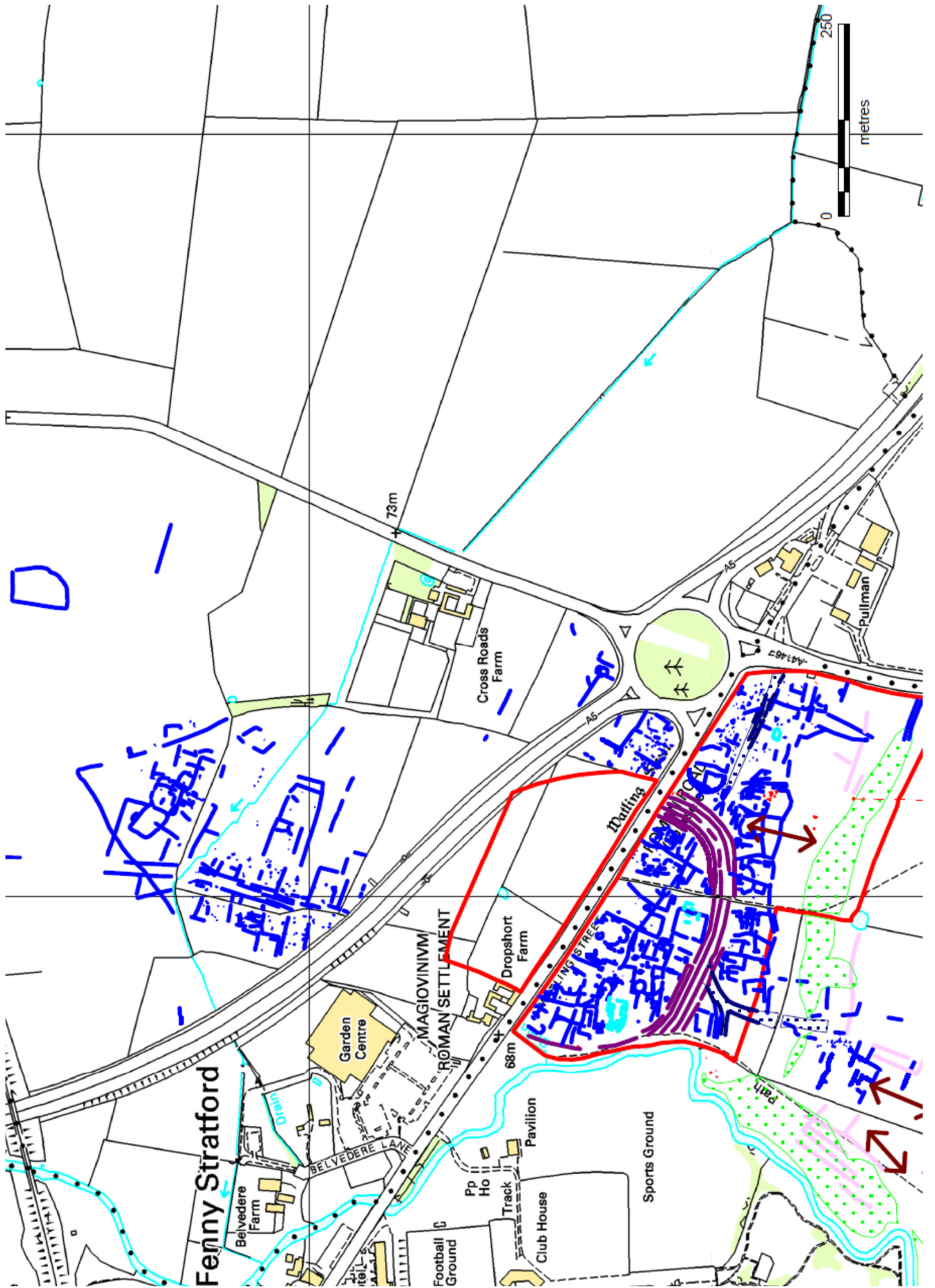
16. NHLE list entry for Scheduled Monument of the Roman Town of Magiovinium and Roman Fort (National Heritage List no. 1006943)

Appendix 1: Plan showing Area 2 (shaded orange) in relation to the Site and geophysical survey results



Appendix 6. Plans showing geophysical surveys and interpretive plots on the Site and Eaton Leys in relation to the area of Scheduled Monument (outlined in red)







Appendix 11: Tables / Matrices used in Appellant's Environmental Statement

Table 1.1 Matrix for Determining the Significance of Effects

Magnitude	Sensitivity of Receptor/Receiving Environment to Change/Effect			
	High	Medium	Low	Negligible
High	Major	Moderate to Major	Minor to Moderate	Negligible
Medium	Moderate to Major	Moderate	Minor	Negligible
Low	Minor to Moderate	Minor	Negligible to Minor	Negligible
Negligible	Negligible	Negligible	Negligible	Negligible

Table 5.3: Significance of Effects Matrix

Magnitude of Impact/Change	Sensitivity of Receptor				
	Very High	High	Medium	Low	Negligible
Major	Severe	Major	Moderate	Moderate or Minor	Minor
Moderate	Major	Major or Moderate	Moderate or Minor	Minor	Negligible
Minor	Moderate	Moderate or Minor	Minor	Negligible	Neutral
Negligible	Moderate or Minor	Minor	Negligible	Neutral	Neutral
No change	Neutral	Neutral	Neutral	Neutral	Neutral

Table 5.6 Summary of Effects – Heritage

Receptor	Sensitivity of Receptor	Nature of Potential Impact	Potential Effect	Proposed Mitigation	Residual Effect	Significant/Not Significant
Construction Phase						
Below ground Heritage Assets (archaeology)	Medium	Major	Moderate Minor	Investigation	Moderate Minor	Not significant
Above ground Heritage Assets (Ridge & Furrow)	Low	Major	Moderate Minor	Investigation	Moderate Minor	Not significant
Operational Phase						
Above ground Heritage Assets	High	Negligible	Minor	None	Negligible	Not significant

Appendix 12: Significance Matrix from DMRB LA104

Table 3.8.1 Significance Matrix

	Magnitude of impact (degree of change)					
		No change	Negligible	Minor	Moderate	Major
Environmental value (sensitivity)	Very high	Neutral	Slight	Moderate or large	Large or very large	Very large
	High	Neutral	Slight	Slight or moderate	Moderate or large	Large or very large
	Medium	Neutral	Neutral or slight	Slight	Moderate	Moderate or large
	Low	Neutral	Neutral or slight	Neutral or slight	Slight	Slight or moderate
	Negligible	Neutral	Neutral	Neutral or slight	Neutral or slight	Slight

Appendix 15. Plan from Defended Small Towns of Roman Britain project 2018

