

# Recycling Display

Visual learning of what can and cannot be recycled

Visual displays have great impact and are accessible to young and old, those who cannot read. Create this colourful recycling display to show what can and cannot be recycled here in Milton Keynes.

1. Print off the images below in colour on single-sided A4 plain paper.
2. Laminate and then cut out the individual items.
3. Stick the various containers onto your noticeboard/exhibition boards. Add on the arrows pointing inwards to the containers and surround with the images of the correct contents.

# What goes where?



## Only these items for recycling...

- Mixed paper, magazines and envelopes
- Cardboard
- Food and drink cartons
- Drinks cans
- Food tins
- Foil trays
- Empty aerosol spray cans
- Plastic bottles and lids
- Plastic food trays and pots



**CLEAR SACKS**

**BLUE BOX**

- Glass bottles and jars (no lids)



## All other rubbish including...

- Disposable coffee cups
- Wet wipes
- Plastic film and cling film
- All tissues and kitchen towel
- Plastic carrier bags
- Broken glass (wrapped up)
- Dirty nappies and sanitary products
- Pet food pouches
- Clothes, bedding and other textiles
- Pet poo and bedding
- Crisp, sweet & biscuit wrappers

**BLACK SACKS**



- Fruit and vegetables
- Any leftover food
- Teabags, tea leaves and coffee grounds
- Dairy products
- Meat, bones, fish – cooked or raw
- Bread and pastries
- Branches (less than 15cm diameter)
- Grass clippings
- Weeds

**GREEN BIN**



- Household batteries
- Button batteries
- Laptop batteries
- Mobile phone batteries



**BATTERIES**



### **Helps our environment**

Reduces pollution of water ways, reduces emissions caused by landfill and burning rubbish.



### **Saves natural resources**

Reduces deforestation, impact of mining, soil erosion, etc.



### **Creates jobs**

Workers, maintenance, factory designers, engineers, reproprocessors and more! New technology developed.



# **Why do we recycle?**

### **Creates new products**

Recycling creates new products for us to buy and recycle again and again!



### **It shows we care**

Recycling at home and school shows that we care for the environment, for nature and for where we live.



### **Saves energy**

Recycling saves energy and water when compared to creating brand new products.



# What happens to my recycling and rubbish?

MK residents' recycling from clear sacks and blue boxes is sent to a Materials Recycling Facility. Here the factory machinery and staff sort and separate the paper, metal cans and plastic bottles, etc. These are then squashed into cubes called bales ready for transportation to factories to be made into new recycled products.



Paper is recycled into more newspaper, toilet rolls, tissues & egg boxes. Paper can be recycled 5 or 6 times before the fibres become too weak to be recycled. Its last life will be as a tissue.

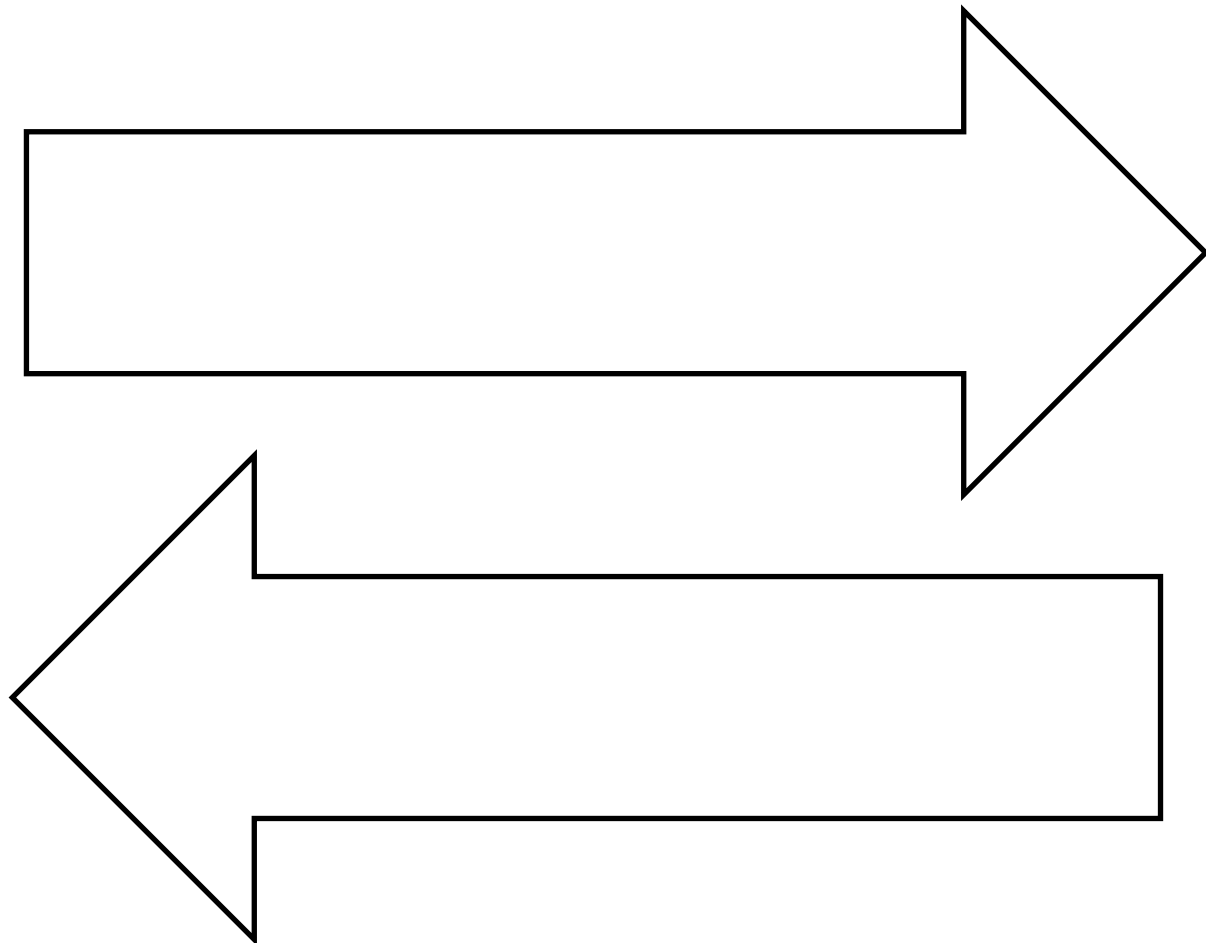
Steel and aluminium cans are sent to furnaces where they are melted down and recycled to create another can. They are back on the supermarket shelf with new food or fizz inside in about 6 weeks!

Plastic is first flaked, then washed, dried and melted. Plastic bottles can be recycled into more bottles, traffic cones, wheelie bins, guttering, fluff in duvets, etc. Plastic food tubs, yoghurt pots, etc. can be recycled into a plastic board to be turned into products such as picnic tables or pig sties!

The glass is sent to furnaces where it is melted down and remoulded into new bottles and jars. When different colour glass bottles and jars are melted together it all turns green as this is the dominant colour.

Food and garden waste is sent to a composting facility where it is turned into a compost-like soil for agriculture.

Rubbish placed in black bags is sent to the MK Waste Recovery Park in Old Wolverton. Here items that can be recycled or composted are retrieved and what is left behind is processed and ultimately converted into electricity.





**Drinks cartons**



**Envelopes**  
including window envelopes



**Plastic bottles**  
Wash, squash & lid back on!  
Lids also accepted loose



**Aluminium fizzy  
drink cans**



**Empty aerosol  
spray cans**



**Plastic food trays**  
Remove top film cover





**Newspapers, magazines  
and paper**



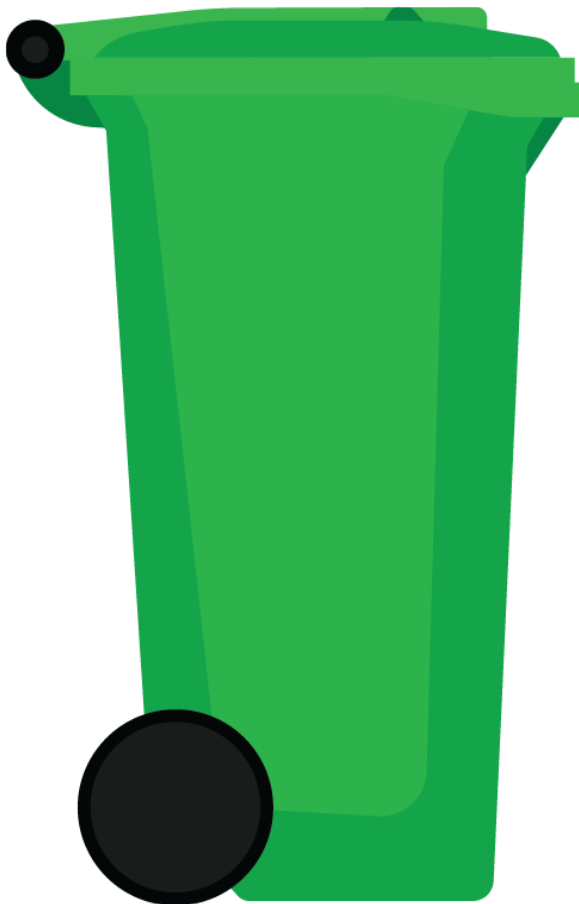
**Aluminium Foil**



**Cardboard**



**Steel food cans**



**All food and garden waste goes in the green wheeled bin**



**Collect food waste in your kitchen caddy and then empty into the green wheeled bin.**





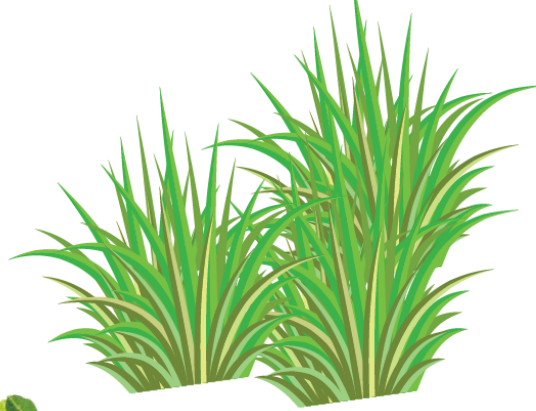
**Leaves**



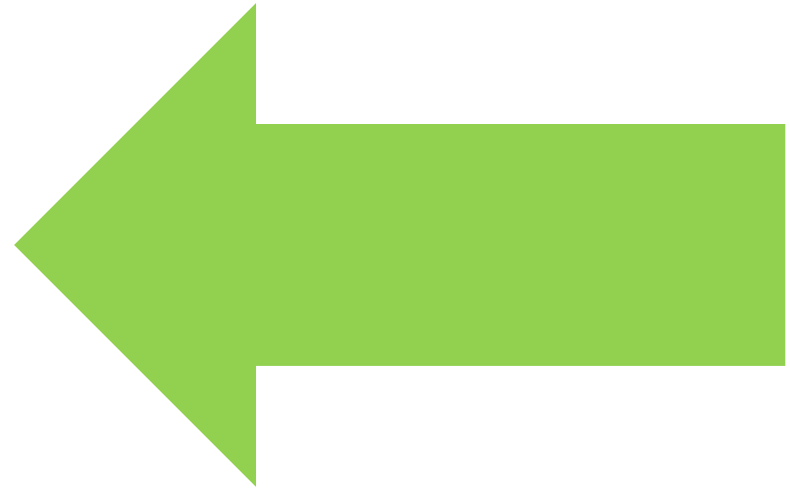
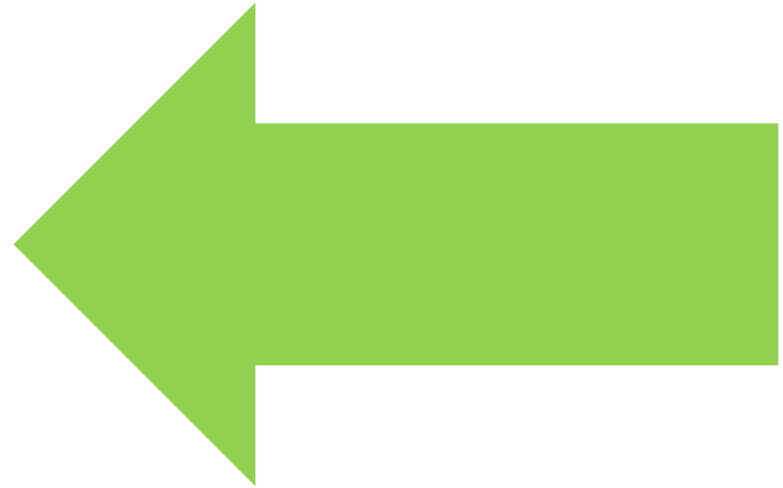
**Dead flowers  
and weeds**



**Twigs and small  
branches**



**Grass**





**Fruit and vegetables**



**Meat, fish and bones –  
cooked and raw**



**Dairy**



**Tea bags and coffee grounds**

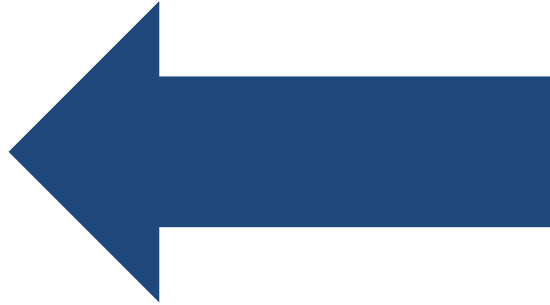
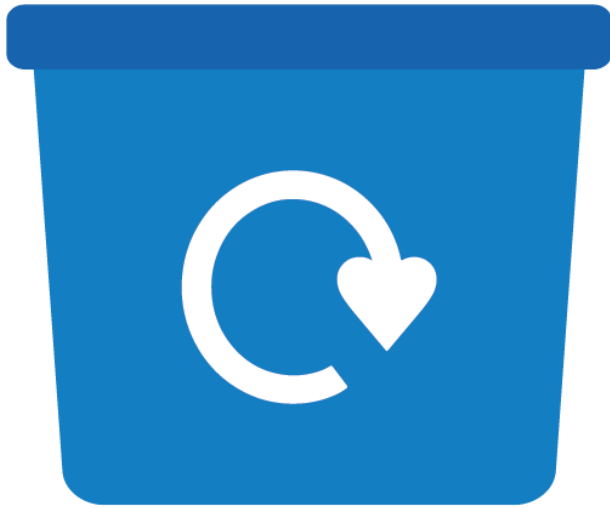


**Breads and pastries**



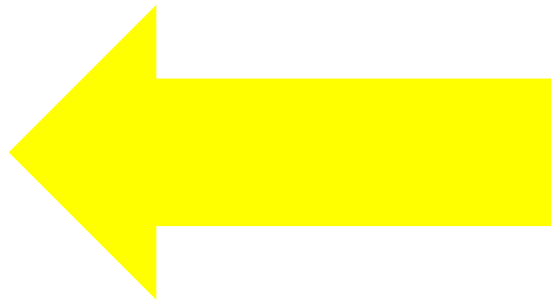
**Out of date and leftover food  
that can't be eaten or reheated**

**All food waste includes fruit, vegetables,  
meat, fish, etc. as well as plate scrapings,  
food that is out of date and mouldy.**

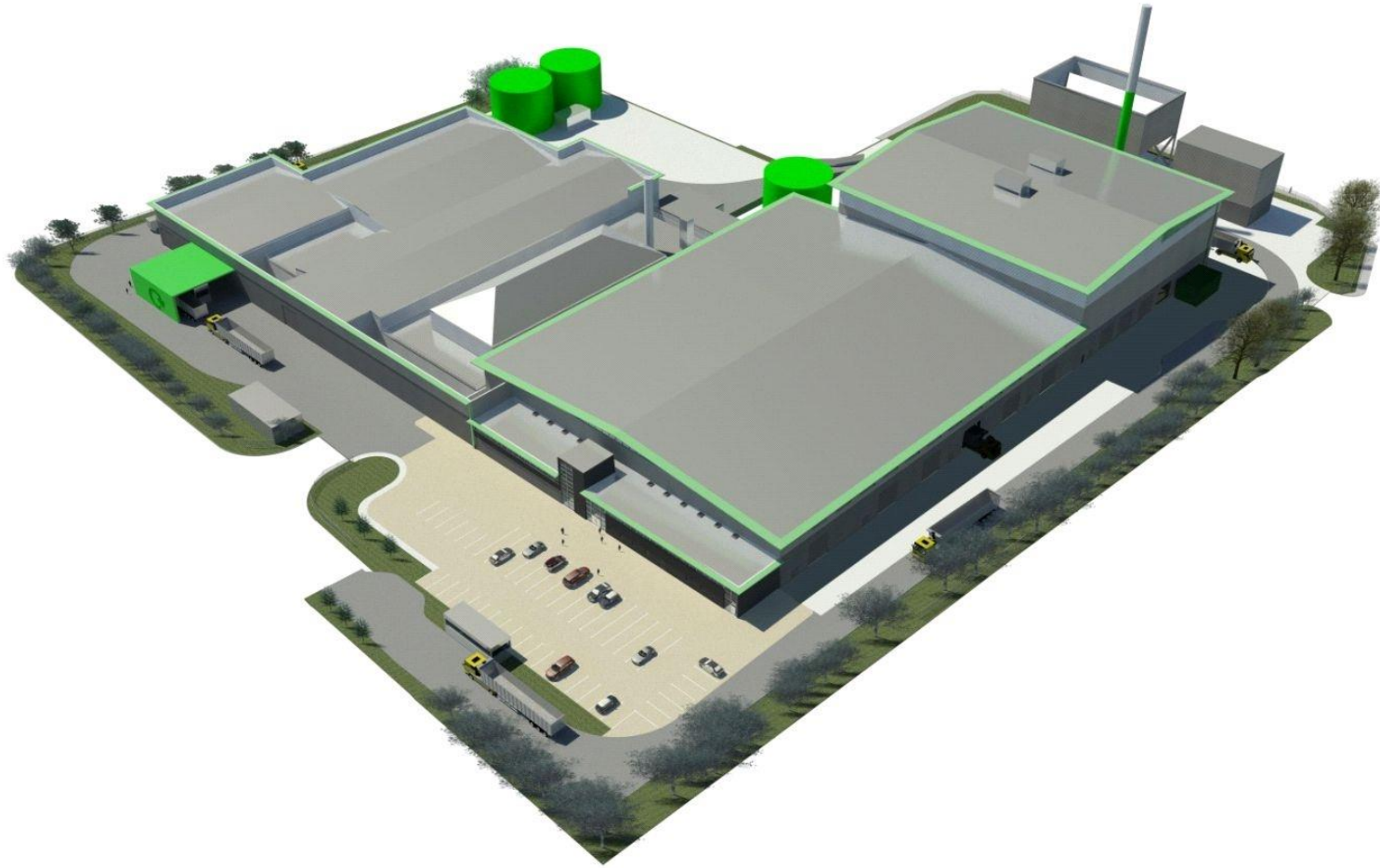


### **Glass bottles and glass jars**

No lids. Place lids in the recycling sack



### **Household batteries**



**Milton Keynes Waste Recovery Park**





### **Used Tissues & Hand towels**

These cannot be recycled for hygiene reason and because the fibres are too weak.



### **Nappies & Wet Wipes**

All absorbent hygiene products e.g. nappies, sanitary towels, incontinence pads, etc. cannot be recycled.



### **Crisp packets, Sweet & Biscuit wrappers**

Take to you local supermarket and place in Soft Plastics Recycling container.



### **Broken glass**

Please wrap broken drinks glass and crockery in old newspaper and place in the black bin bag.



### **Dog poo, cat litter, animal bedding e.g. straw, hay and sawdust**

Please don't put animal waste into the green garden waste bin.



### **Mixed Materials e.g. empty pill packet**

These items are made of different materials types joined together. This makes them difficult to separate to be recycled cost effectively.



 Milton Keynes recycles

 Milton Keynes recycles

