



Robins Children's Centre Programme

Services and support for families with under fives

Open Monday - Thursday 8.30am - 4.30pm
and Friday 8.30am - 4.00pm

Robins Reach Area:

Bradwell, Bradwell Abbey, Great Holm, Heelands, Two Mile Ash, Wymbush

www.milton-keynes.gov.uk/childrens-centre



Sessions for parent/carers and children

Monday

Bumps and Babies	Come and join our relaxed, nurturing sensory baby session for non-walkers. Meet new parents and share experiences in a supportive environment with monthly soft play.	10:00am - 11:15am
-------------------------	---	-------------------

Soft Play	Separate Baby and Toddler area	10:00am - 11:15am <i>First Monday of the month</i>
------------------	--------------------------------	--

Sensory Room

Monday, Thursday and Friday 1:00pm - 2:00pm

Sensory resources, bubble tube and lights to share with your child.

Please contact the Centre to book the Sensory room suitable for up to 4 people.

We welcome a suggested voluntary contribution of £1.

The sensory room needs to be booked.

Tuesday

Story and Song Time Outreach session	Ashbrook School, Two Mile Ash, MK8 8NA Story and Song time with musical instruments and books to share.	9:00am - 9:30am Drop -In 9:30am - 10:00am Story and Song time
Robin's Walk	Meet at Heelands Meeting Place MK13 7PN Explore the local area with your children.	11:00am - 12:00 noon



MK Together

For information regarding MK Safeguarding Partnership arrangements go to the MK Together website: www.mktogether.co.uk/

Wednesday

CLMK/ Parenting courses

Contact the centre to find out about the new courses available.

9:30am - 11:30am

Language Café

Is English your second language? Come along and improve your spoken English with other local families.

1:00pm - 2:00pm

Thursday

Bumps and Babies

Come and join our relaxed, nurturing sensory baby session for non-walkers. Meet new parents and share experiences in a supportive environment with monthly messy play.

10:00am - 11:15am

Messy Play

Children under 5 get ready to get messy. Bring a spare change of clothes.

10:00am - 11:15am
Last Thursday of the month

Friday

Stay and Play

Activities and experiences for you and your child to support their development through play. Snack is provided.

10:00am - 11:30am

Data Protection Privacy Statement

We collect and use information about you so that we can provide you with the best services possible. Full details about how we use this data and the rights you have around this can be found at www.milton-keynes.gov.uk/cafcprivacy. If you have any data protection queries, please contact the Data Protection Officer at data.protection@milton-keynes.gov.uk

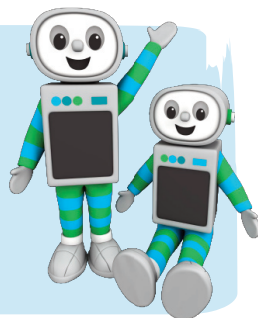
Time for twos

You are automatically eligible for 15 HOURS FREE early education for your three or four year old

You may also be eligible for 30 hours FREE early education for your three or four year old. To find out if you are eligible visit:

www.childcarechoices.gov.uk

Or visit your local Children's and Family Centre for more help.



Support and Advice

If you need any support or advice please contact the centre for more information.

We work in partnership with a host of agencies in Milton Keynes, so please reach out. No amount of help needed is ever too big or small.

Volunteering

If you have a few hours to spare your local Children and Family Centres need you. We have varying roles available offering accredited training to enhance your CV and support your local community.

Healthy Start Vitamins



Healthy Start vitamins coupons can be exchanged at all the centres.

Are you registered at your local children's centre? If not, visit:

www.milton-keynes.gov.uk/childrens-centres

Find us on Facebook



Robins Children's Centre

Glovers Lane, Heelands, Milton Keynes MK13 7QL

01908 318758