



Panorama 22 For context only



Photograph 22  
View from Whaddon Road within Newton Longville Conservation Area, looking north west

Visualisation Type 1  
Planar projection  
75% @ A3, 150% @ A1  
12.03.2020, 13:54  
Canon 1300D 1.6x, Canon EF-S 18-55mm  
HfoV 40°  
Looking direction: north west

<div><div>CSA</div><div>environmental</div></div>	<div>Dixies Barns, High Street, Ashwell, Hertfordshire SG7 5NT</div> <div><div>t</div>01462 743647</div> <div><div>e</div>ashwell@csaenvironmental.co.uk</div> <div><div>w</div>csaenvironmental.co.uk</div>
---	--



Approximate extent of Site

The Site



Panorama 23 For context only



Photograph 23

View from public footpath NLO/16/1, west of Newton Longville, looking north

Visualisation Type 1  
Planar projection  
75% @ A3, 150% @ A1  
12.03.2020, 13:53  
Canon 1300D 1.6x, Canon EF-S 18-55mm  
HfoV 40°  
Looking direction: north

		Dixies Barns, High Street, Ashwell, Hertfordshire SG7 5NT t 01462 743647 e ashwell@csaenvironmental.co.uk w csaenvironmental.co.uk		
Project	South West Milton Keynes 3	Drawing No. CSA/4857/104		
Drawing Title	Appendix 9.2 - Figure 9.E: Photosheets	Date March 2020		
Client	Hallam Land Management, William Davis & Taylor Wimpey	Drawn AJ	Checked PH	Rev A





Panorama 24 For context only



Photograph 24

View from access road to Hounslow Hall and Cowpasture Farm, south west of Newton Longville, looking north

Visualisation Type 1  
Planar projection  
75% @ A3, 150% @ A1  
12.03.2020, 13:09  
Canon 1300D 1.6x, Canon EF-S 18-55mm  
HfoV 40°  
Looking direction: north

CSA

environmental

Dixies Barns, High Street,  
Ashwell, Hertfordshire SG7 5NT  
t 01462 743647  
e ashwell@csaenvironmental.co.uk  
w csaenvironmental.co.uk

Project	South West Milton Keynes 3	Drawing No.	CSA/4857/104		
Drawing Title	Appendix 9.2 - Figure 9.E: Photosheets	Date	March 2020		
Client	Hallam Land Management, William Davis & Taylor Wimpey	Drawn	AJ	Checked	PH
		Rev	A		





Panorama 25 For context only



Photograph 25  
View from public bridleway MUR/16/1 south west of Newton Longville, looking north

Visualisation Type 1  
Planar projection  
75% @ A3, 150% @ A1  
12.03.2020, 13:12  
Canon 1300D 1.6x, Canon EF-S 18-55mm  
HfoV 40°  
Looking direction: north

CSA

environmental

Dixies Barns, High Street,  
Ashwell, Hertfordshire SG7 5NT

t

01462 743647

e

ashwell@csaenvironmental.co.uk

w

csaenvironmental.co.uk

Project	South West Milton Keynes 3	Drawing No.	CSA/4857/104		
Drawing Title	Appendix 9.2 - Figure 9.E: Photosheets	Date	March 2020		
Client	Hallam Land Management, William Davis & Taylor Wimpey	Drawn	AJ	Checked	PH
		Rev	A		





Panorama 26 For context only



Photograph 26  
View from Lower Way, within Great Brickhill Conservation Area, looking north west

Visualisation Type 1  
Planar projection  
75% @ A3, 150% @ A1  
12.03.2020, 11:16  
Canon 1300D 1.6x, Canon EF-S 18-55mm  
HfoV 40°  
Looking direction: north west



Dixies Barns, High Street,  
Ashwell, Hertfordshire SG7 5NT  
t 01462 743647  
e ashwell@csaenvironmental.co.uk  
w csaenvironmental.co.uk

Project	South West Milton Keynes 3	Drawing No.	CSA/4857/104		
Drawing Title	Appendix 9.2 - Figure 9.E: Photosheets		Date	March 2020	
Client	Hallam Land Management, William Davis & Taylor Wimpey	Drawn	AJ	Checked	PH
		Rev	A		





Panorama 27 For context only

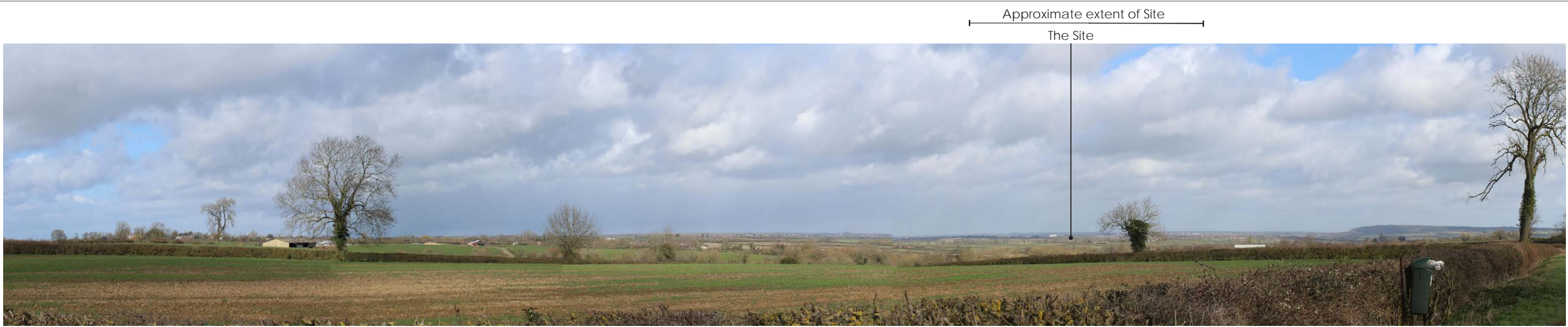


Photograph 27  
View from public bridleway 15, Little Brickhill, looking north west

Visualisation Type 1  
Planar projection  
75% @ A3, 150% @ A1  
12.03.2020, 10:56  
Canon 1300D 1.6x, Canon EF-S 18-55mm  
HfoV 40°  
Looking direction: north west

<div><div>CSA</div><div>environmental</div></div>	<div>Dixies Barns, High Street, Ashwell, Hertfordshire SG7 5NT</div> <div><div>t</div>01462 743647</div> <div><div>e</div>ashwell@csaenvironmental.co.uk</div> <div><div>w</div>csaenvironmental.co.uk</div>
---	--





Panorama 28 For context only



Photograph 28

View from Bletchley Road near North End, looking north

Visualisation Type 1  
Planar projection  
75% @ A3, 150% @ A1  
12.03.2020, 11:36  
Canon 1300D 1.6x, Canon EF-S 18-55mm  
HfoV 40°  
Looking direction: north

<div><div>CSA</div><div>environmental</div></div>	<div>Dixies Barns, High Street, Ashwell, Hertfordshire SG7 5NT</div> <div><div>t</div>01462 743647</div> <div><div>e</div>ashwell@csaenvironmental.co.uk</div> <div><div>w</div>csaenvironmental.co.uk</div>
---	--



Approximate extent of Site



Panorama 29 For context only



Photograph 29

View from access road to Chase Farm hamlet, looking east

Visualisation Type 1  
Planar projection  
75% @ A3, 150% @ A1  
17.03.2020, 10:41  
Canon 1300D 1.6x, Canon EF-S 18-55mm  
HfoV 40°  
Looking direction: east

<div><div>CSA</div><div>environmental</div></div>	<div>Dixies Barns, High Street, Ashwell, Hertfordshire SG7 5NT</div> <div><div>t</div>01462 743647</div> <div><div>e</div>ashwell@csaenvironmental.co.uk</div> <div><div>w</div>csaenvironmental.co.uk</div>
---	--





**Photograph 30** View from Hamilton Lane, Bletchley, looking west towards the Site

Visualisation Type 1  
Cylindrical projection  
48% @ A3, 96% @ A1  
12.03.2020, 14:49  
Canon 1300D 1.6x, Canon EF-S 18-55mm  
HfoV 90°  
Looking direction: west

<div><div>CSA</div><div>environmental</div></div>		Dixies Barns, High Street, Ashwell, Hertfordshire SG7 5NT <div><div>t</div>01462 743647</div> <div><div>e</div>ashwell@csaenvironmental.co.uk</div> <div><div>w</div>csaenvironmental.co.uk</div>
---	--	---



Approximate extent of Site  
The Site



Panorama 31 For context only



Photograph 31

View from public footpath MUR/2/2, looking north east

Visualisation Type 1  
Planar projection  
75% @ A3, 150% @ A1  
12.03.2020, 12:06  
Canon 1300D 1.6x, Canon EF-S 18-55mm  
HfoV 40°  
Looking direction: north east

		Dixies Barns, High Street, Ashwell, Hertfordshire SG7 5NT t 01462 743647 e ashwell@csaenvironmental.co.uk w csaenvironmental.co.uk		
Project	South West Milton Keynes 3	Drawing No. CSA/4857/104		
Drawing Title	Appendix 9.2 - Figure 9.E: Photosheets	Date March 2020		
Client	Hallam Land Management, William Davis & Taylor Wimpey	Drawn AJ	Checked PH	Rev A





Panorama 32 For context only



Photograph 32

View from public footpath MUR/3/1, looking north east

Visualisation Type 1  
Planar projection  
75% @ A3, 150% @ A1  
12.03.2020, 12:23  
Canon 1300D 1.6x, Canon EF-S 18-55mm  
HfoV 40°  
Looking direction: north east

<div><div>CSA</div><div>environmental</div></div>	<div>Dixies Barns, High Street, Ashwell, Hertfordshire SG7 5NT</div> <div><div>t</div>01462 743647</div> <div><div>e</div>ashwell@csaenvironmental.co.uk</div> <div><div>w</div>csaenvironmental.co.uk</div>
---	--



Approximate extent of Site  
The Site



Panorama 33 For context only



Photograph 33

View from public bridleway MUR/16/2, looking north

Visualisation Type 1  
Planar projection  
75% @ A3, 150% @ A1  
12.03.2020, 13:20  
Canon 1300D 1.6x, Canon EF-S 18-55mm  
HfoV 40°  
Looking direction: north

<div><div>CSA</div><div>environmental</div></div>	<div>Dixies Barns, High Street, Ashwell, Hertfordshire SG7 5NT</div> <div><div>t</div>01462 743647</div> <div><div>e</div>ashwell@csaenvironmental.co.uk</div> <div><div>w</div>csaenvironmental.co.uk</div>
---	--



Approximate extent of Site



Panorama 34 For context only



Photograph 34

View from public bridleway WHA/15/1, looking east

Visualisation Type 1  
Planar projection  
75% @ A3, 150% @ A1  
17.03.2020, 11:47  
Canon 1300D 1.6x, Canon EF-S 18-55mm  
HfoV 40°  
Looking direction: east

<div><div>CSA</div><div>environmental</div></div>	<div>Dixies Barns, High Street, Ashwell, Hertfordshire SG7 5NT</div> <div><div>t</div>01462 743647</div> <div><div>e</div>ashwell@csaenvironmental.co.uk</div> <div><div>w</div>csaenvironmental.co.uk</div>
---	--





Panorama 35 For context only



Photograph 35  
View from Midshire’s Way and Swan’s Way, looking east

Visualisation Type 1  
Planar projection  
75% @ A3, 150% @ A1  
17.03.2020, 11:54  
Canon 1300D 1.6x, Canon EF-S 18-55mm  
HfoV 40°  
Looking direction: east

<div><div>CSA</div><div>environmental</div></div>	<div>Dixies Barns, High Street, Ashwell, Hertfordshire SG7 5NT</div> <div><div>t</div>01462 743647</div> <div><div>e</div>ashwell@csaenvironmental.co.uk</div> <div><div>w</div>csaenvironmental.co.uk</div>
---	--





Panorama 36 For context only



Photograph 36  
View from Midshire's Way and Swan's Way, looking east

Visualisation Type 1  
Planar projection  
75% @ A3, 150% @ A1  
17.03.2020, 11:47  
Canon 1300D 1.6x, Canon EF-S 18-55mm  
HfoV 40°  
Looking direction: east

<div><div>CSA</div><div>environmental</div></div>	<div>Dixies Barns, High Street, Ashwell, Hertfordshire SG7 5NT</div> <div><div>t</div>01462 743647</div> <div><div>e</div>ashwell@csaenvironmental.co.uk</div> <div><div>w</div>csaenvironmental.co.uk</div>
---	--



Approximate extent of Site



Panorama 37 For context only



Photograph 37  
View from Midshire's Way and Swan's Way, looking east

Visualisation Type 1  
Planar projection  
75% @ A3, 150% @ A1  
17.03.2020, 10:25Canon 1300D 1.6x,  
Canon EF-S 18-55mm  
HfoV 40°  
Looking direction: east

<div><div>CSA</div><div>environmental</div></div>	<div>Dixies Barns, High Street, Ashwell, Hertfordshire SG7 5NT</div> <div><div>t</div>01462 743647</div> <div><div>e</div>ashwell@csaenvironmental.co.uk</div> <div><div>w</div>csaenvironmental.co.uk</div>
---	--





**Photograph 38** View from Hamilton Lane, Bletchley, looking west towards the Site

Visualisation Type 1  
Cylindrical projection  
48% @ A3, 96% @ A1  
12.03.2020, 14:56  
Canon 1300D 1.6x, Canon EF-S 18-55mm  
HfoV 90°  
Looking direction: west

<div><div>CSA</div><div>environmental</div></div>		Dixies Barns, High Street, Ashwell, Hertfordshire SG7 5NT t 01462 743647 e ashwell@csaenvironmental.co.uk w csaenvironmental.co.uk		
Project	South West Milton Keynes 3	Drawing No. CSA/4857/104		
Drawing Title	Appendix 9.2 - Figure 9.E: Photosheets	Date March 2020		
Client	Hallam Land Management, William Davis & Taylor Wimpey	Drawn AJ	Checked PH	Rev A





**Photograph 39** View from Milton Keynes Boundary Walk looking east

Visualisation Type 1  
Cylindrical projection  
48% @ A3, 96% @ A1  
12.03.2020, 15:04  
Canon 1300D 1.6x, Canon EF-S 18-55mm  
HfoV 90°  
Looking direction: east

<div><div>CSA</div><div>environmental</div></div>		Dixies Barns, High Street, Ashwell, Hertfordshire SG7 5NT <div><div>t</div>01462 743647</div> <div><div>e</div>ashwell@csaenvironmental.co.uk</div> <div><div>w</div>csaenvironmental.co.uk</div>
---	--	---





**Photograph 40** View from Milton Keynes Boundary Walk looking east

Visualisation Type 1  
Cylindrical projection  
48% @ A3, 96% @ A1  
12.03.2020, 15:09  
Canon 1300D 1.6x, Canon EF-S 18-55mm  
HfoV 90°  
Looking direction: east

<div><div>CSA</div><div>environmental</div></div>	<div>Dixies Barns, High Street, Ashwell, Hertfordshire SG7 5NT</div> <div><div>t</div>01462 743647</div> <div><div>e</div>ashwell@csaenvironmental.co.uk</div> <div><div>w</div>csaenvironmental.co.uk</div>
---	--



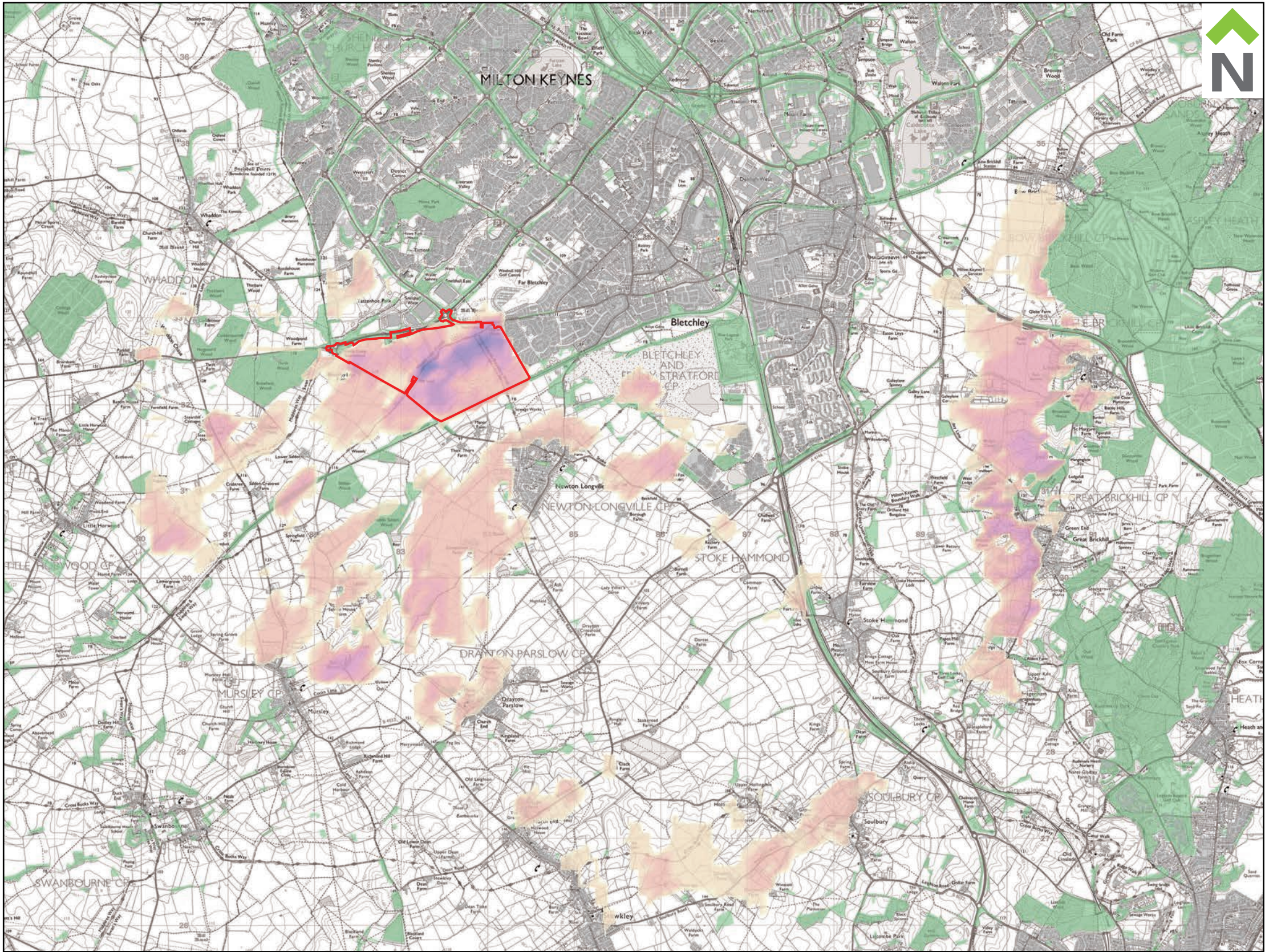


**Photograph 41** View from Weasel Lane within the Site looking south



Visualisation Type 1  
Cylindrical projection  
48% @ A3, 96% @ A1  
12.03.2020, 15:22  
Canon 1300D 1.6x, Canon EF-S 18-55mm  
HfoV 90°  
Looking direction: south



<div><div>CSA</div><div>environmental</div></div>	<div>Dixies Barns, High Street, Ashwell, Hertfordshire SG7 5NT</div> <div><div>t</div>01462 743647</div> <div><div>e</div>ashwell@csaenvironmental.co.uk</div> <div><div>w</div>csaenvironmental.co.uk</div>
---	--





LEGEND

-  Site Boundary
-  High potential for visibility
- Low potential for visibility

- Obstructions shown:
-  Existing Buildings: 9m high
-  Existing Woodland: 12m high

**NOTE:**  
The Zone of Theoretical Visibility Map is based on 1:50,000 OS Data. This includes areas of woodland and existing buildings but excludes localised vegetation and anomalies in landform. The viewer height of 1.7m has been used to develop this plan.

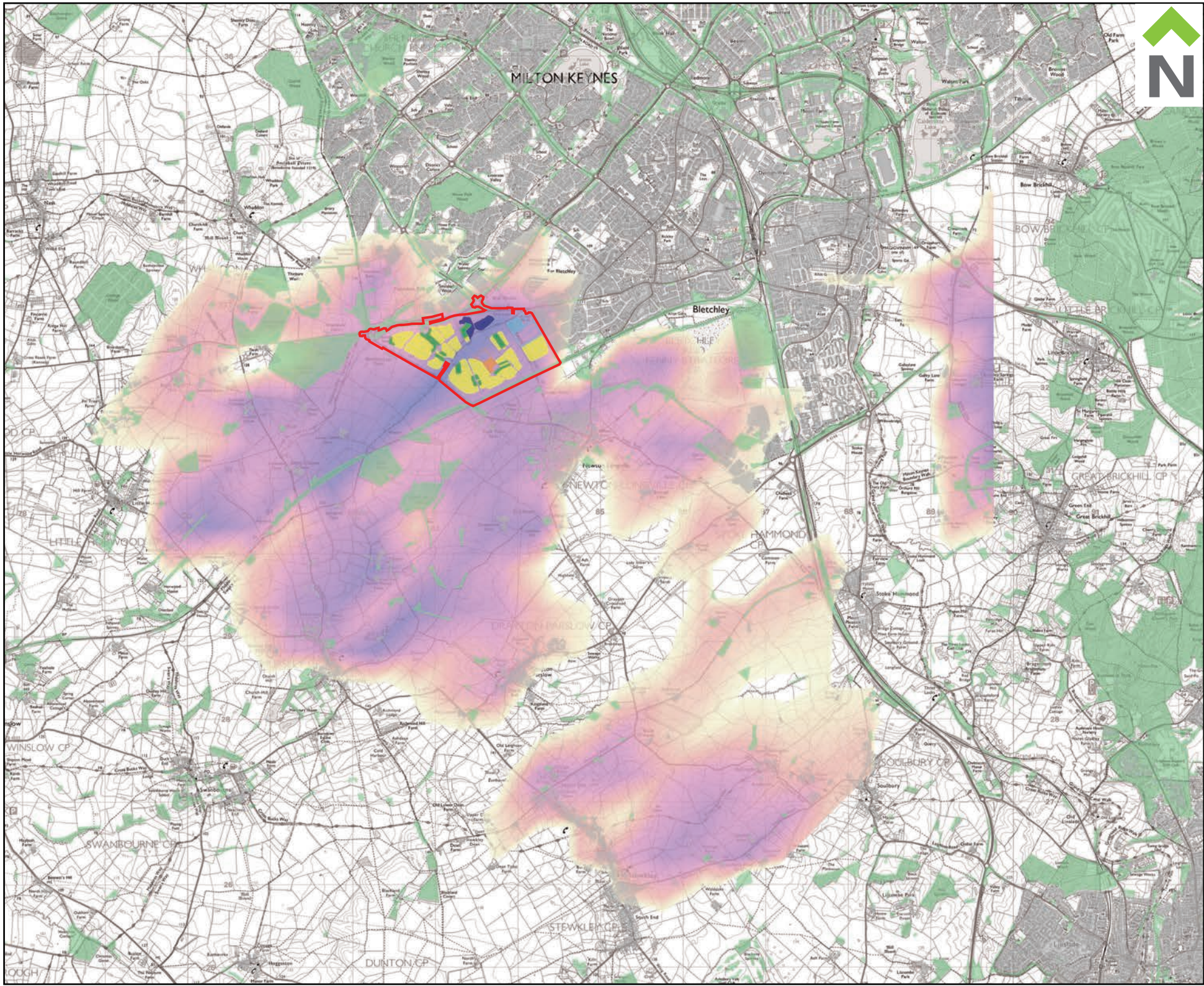


Dixies Barns, High Street,  
Ashwell, Hertfordshire SG7 5NT

t 01462 743647  
e ashwell@csaenvironmental.co.uk  
w csaenvironmental.co.uk

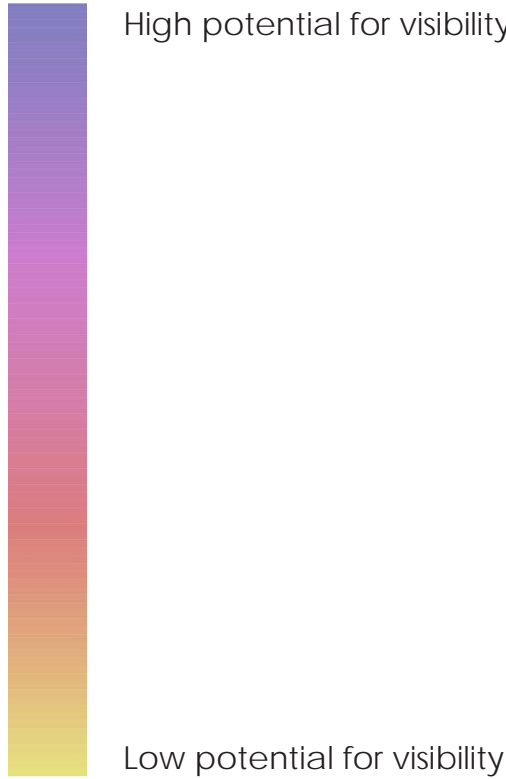
Project	South West Milton Keynes 3	Date	March 2020	Drawing No.	CSA/4857/106
Drawing Title	Appendix 9.2 - Figure 9.F: Existing Zone of Theoretical Visibility (ZTV) with obstructions	Scale @ A3	1:50,000	Rev	-
Client	Hallam Land Management, William Davies & Taylor Wimpey	Drawn	JB/PH	Checked	CA





LEGEND

- Site Boundary
- Proposed Development Blocks at 10m
- Proposed Development Blocks at 11.5m
- Proposed Development Blocks at 12m
- Proposed Development Blocks at 12.5m
- Proposed Development Blocks at 13m
- High potential for visibility



Low potential for visibility

Obstructions shown:



Existing Buildings: 9m high



Existing Woodland: 12m high

NOTE:

The Zone of Theoretical Visibility Map is based on 1:50,000 OS Data. This includes areas of woodland and existing buildings but excludes localised vegetation and anomalies in landform. The viewer height of 1.7m has been used to develop this plan.



Dixies Barns, High Street,  
Ashwell, Hertfordshire SG7 5NT  
t 01462 743647  
e ashwell@csaenvironmental.co.uk  
w csaenvironmental.co.uk

Project	South West Milton Keynes 3	Date	March 2020	Drawing No.	CSA/4857/107
Drawing Title	Appendix 9.2 - Figure 9.G: Proposed Zone of Theoretical Visibility (ZTV) with obstructions	Scale @ A3	RTS	Rev	-
Client	Hallam Land Management, William Davies & Taylor Wimpey	Drawn	JB/PH	Checked	CA