



Daisychain Family Centre Programme

Services and support for families and the community

Open Monday to Thursday 8.30am - 4.30pm
and Friday 8.30am - 4.00pm

Daisychain Reach Area:

West Bletchley, Far Bletchley, Granby, Mount Farm, Denbigh North, Denbigh West and Brickfields

www.milton-keynes.gov.uk/childrens-centre

Sessions for parent/carers and children

Monday

Stay and Play	A fun filled session for you and your child to enjoy, with a variety of activities and story and song time.	10.00am - 11.30am
Let's Interact and Play	A fun interactive group to support your child's early communication talking through play. Please speak to a member of staff for more information.	1.30pm - 2.30pm
Storytime Café	This snack time café will be an opportunity to join in with stories, songs and have a snack.	2.30pm - 3:00pm

Development Reviews

Mondays, 9.00am - 4.15pm

Tuesdays, 12.45pm - 4.15pm

Please contact health visitor's hub on 01908 725100 for further information.

Drop in Breakfast Club

Monday and Wednesday, 9.15am - 9.45am

Our breakfast club is a time for you to drop in and have toast and tea and time to play with your children.

Budgeting

Mondays, 1.30pm - 2.30pm

This session will support you to manage your finances and provide advice on budgeting and managing debt. - CLMK

Tuesday

Little Explorers	This under 1's session is perfect for those little feet who love to explore.	9.15am - 10.15am
Little Daisies	Stay and Play for parents under the age of 25. Come and join us for snacks, chat and play opportunities for your children.	10.30am - 12.00 noon
Story, Songs and Rhymes	Enjoy this themed story and song time session - to spark a love of books.	1.30pm - 3.00pm
Bumps and Babes	This is a non-walking baby group, for new mums and mums to be.	1.30pm - 3.00pm

Data Protection Privacy Statement

We collect and use information about you so that we can provide you with the best services possible. Full details about how we use this data and the rights you have around this can be found at www.milton-keynes.gov.uk/cafcprivacy. If you have any data protection queries, please contact the Data Protection Officer at data.protection@milton-keynes.gov.uk

Wednesday

Mucky Pups	This is an exciting session where your babies and children will love getting messy. We advise you bring a change of clothes. £1.00 contribution welcome.	10.00am - 11.30am
Story Sacks	Come and join this session on making and using story sacks to share with you children. - CLMK	10.00am - 12.00 noon

Midwives – Antenatal Appointments

Wednesdays, 8.30am - 4.15pm

These sessions will be pre booked by your midwife.

Wednesday - continued

Soft Play	A fun session for you and your child/ren to enjoy and explore building, climbing, and crawling. Under 3's only.	1.15pm - 2.00pm
Wellbeing Wednesday	Come along to this adult session for a chat with our team, drinks, some arts and crafts and games. Some well-earned you time.	1.30pm - 3.00pm
Toddler Time	Come and join Annette for a fun filled music session for under 5's.	2.00pm - 2.30pm

Community food trolley

Monday - Friday

The food trolley is available daily, where you can help yourself to food.

Thursday

Mini Movers	Bring your under 2's for a fun packed session featuring dance, soft play, rhymes and much more.	9.30am - 11.00am
Fun Fitness for Women	Join Laura from APA fitness in an exercise group for all abilities.	9.30am - 10.30am
Stay and Play	A fun filled session for you and your child to enjoy, with a variety of activities and story and song time.	1.30pm - 3.00pm

Little Feet, Big Leaps

Thursdays

This school readiness group is to help your children have the best possible start to their school life. Please speak to a member of staff if you would like to attend.

Friday

Baby Clinic	An opportunity to drop in, have your babies weighed and speak to the health visiting team.	9.30am - 11.30am
--------------------	--	------------------

Baby Group	This baby group is for 0-12 months and provides a sensory experience and play experience and time to meet other parents.	9.30am - 11.30am
-------------------	--	------------------

Park Trust Walk	This session will involve a walk around the local green areas, with a natural nature activity in the outside environment.	1.00pm - 3.00pm
------------------------	---	-----------------

Washing Hire Drop in Cafe	This session is a time to meet other families, have a chat with refreshments. It also provides an opportunity if needed for you to use the centres washing machine whilst at the café. We will need you to book in to use the washing machine. (Donation of £1.00 is welcome).	1.00pm - 3.00pm
----------------------------------	--	-----------------



MK Together

For information regarding MK Safeguarding Partnership arrangements go to the MK Together website:

www.mktogether.co.uk/

Volunteering

Gain some work experience, job opportunities or just help your local community? If so our Children and Family Centres need you! If you have a few hours to spare your local centre has varying roles available, offering accredited volunteer training and enhance your CV.



milton keynes council



Working Parent's Group

The 2022 tour update...

This is a call to all mums, dads, carers, uncles, aunts and big brothers and sisters to come along to any of the sessions below to play with their young person in a safe, supportive and creative environment. All Saturday sessions are from 9.30am to 11.30am with pastry treats available.

Saturday 3rd September 2022

Saturday 24th September 2022

Saturday 22nd October 2022

Saturday 26th November 2022

Saturday 10th December 2022

Rowans Family Centre, Fullers Slade

Sunshine Children's Centre, Furzton

Hedgerows Family Centre, Netherfield

Saplings Children's Centre, Central Bletchley

Moorlands Family Centre, Beanhill

Any enquiries, please contact
daisychain.childrenscentre@milton-keynes.gov.uk



Information

Private room hire

Did you know...? That our centres are available for private hire? They are perfect for parties, meetings and wedding receptions. To find out more details for bookings please contact your local centre.

Parents Courses we offer

- Nurturing Programme
- Speakeasy
- Triple P

Family Support

Family support available for all households. Please ask for further details from the team.

Milton Keynes Council Day Nurseries

Milton Keynes Day Nurseries offer care and education for children from 3 months to school age.

All children are valued and respected and for those who may require a little extra support to meet their full potential will benefit from the excellent early intervention provision.

For Rowans Day Nursery, Fullers Slade contact: 01908 563269 (3 months to school age)

For Playzone Day Nursery, Netherfield contact: 01908-239000 (2 years to school age)

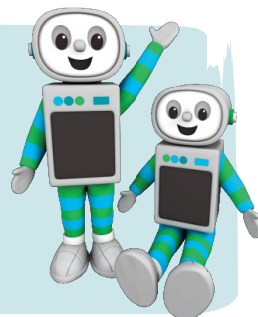
Time for twos

You are automatically eligible for 15 HOURS FREE early education for your three or four year old

You may also be eligible for 30 hours FREE *early* education for your three or four year old. To find out if you are eligible visit:

www.childcarechoices.gov.uk

Or visit your local Children's and Family Centre for more help.





Healthy Start Vitamins

Healthy Start vitamins coupons can be exchanged at all the centres.

Food Bank

Please speak to a member of staff at your local centre.



Are you registered at your local children's centre? If not, visit:
www.milton-keynes.gov.uk/childrens-centres

Find us on
Facebook



Daisychain Family Centre

Melrose Avenue, Bletchley, Milton Keynes MK3 6PS

T: 01908 641454