



Squirrels Children's Centre Programme

Services and support for families with under fives

Open Monday - Thursday 8.30am - 4.30pm
and Friday 8.30am - 4.00pm

Squirrels Reach Area:

Blakelands, Bolbeck Park, Brook Furlong, Giffard Park, Great Linford,
Oakridge Park, Pineham, Redhouse Park, Stantonbury,
Tongwell, Willen and Willen Park

www.milton-keynes.gov.uk/childrens-centre

Sessions for parent/carers and children

Monday

Stay and Play	Follow your child's lead in our stimulating environment. Lots of exciting play opportunities inside and out to maximise your child's curiosity and learning.	10.00am - 11.15am
----------------------	--	-------------------

LIPS - Lets interact and Play	A 4-week course to support your child with speech and language. This is a bookable session. Please speak to a member of the team.	1.30pm - 2.45pm
--------------------------------------	---	-----------------

Parenting courses

Mondays, 1.00pm - 3.00pm

A variety of courses to enhance your knowledge, skills and learning when meeting the needs of a busy family home. These are bookable. Please speak to a member of the team.

Tuesday

Story and Song NEW DAY	Come and share our love of books. Joins us with your child to learn new songs and rhymes for 45 minutes followed by the opportunity to stay and read books, chat and have a cuppa. We ask for a donation for refreshments.	1.30pm - 3.00pm
---	--	-----------------

Health Visitor Development Checks

Tuesdays - 9.00am - 1.00pm and Fridays - 9.00am - 1.00pm **NEW**

Appointments made through health visitors on 01908 725100.

Baby Clinic

Tuesdays, 9.30am - 11.30am

At The Rowans Family Centre, Moorfoot, Fullers Slade MK11 2BD

An opportunity to talk to the health visitors and get your baby weighed.

Tuesdays, 9.30am - 11.30am

At Lovat Hall, Silver Street MK16 0EJ

An opportunity to talk to the health visitors and get your baby weighed.

Wednesdays, 1.00pm - 3.00pm

At Neath Hill Medical Centre, Tower Crescent, Neath Hill

An opportunity to talk to the health visitors and get your baby weighed.

Wednesday

Wellbeing Wednesday

A chance to do a little something for yourself while the children play. Have a cuppa and chat. **Invite Only.**

10.00am - 11.30am

Parents Forum

The last Wednesday of each month, 11.30am - 12.30am

A group of parents that work together to extend and support the services delivered in the children's centre.

Data Protection Privacy Statement

We collect and use information about you so that we can provide you with the best services possible. Full details about how we use this data and the rights you have around this can be found at www.milton-keynes.gov.uk/cafcprivacy. If you have any data protection queries, please contact the Data Protection Officer at data.protection@milton-keynes.gov.uk

Breast feeding support group

Third Wednesday of each month, 1.30pm - 2.30pm

At The Rowans Family Centre 13a Moorfoot, Fullers Slade MK11 2BD

Last Thursday of every month, 1.30pm - 2.30pm

At Squirrels Children's Centre, Redbridge, Stantonbury MK14 6BB

Come and get 1-1 support from specially trained staff, also a chance to talk to other mums and build your confidence.

Thursday

Forest Tots

Run by Wood End Infant and Pre-School

9.30am - 11.00am

Enjoy the wonders of nature and learning in the beautiful private woodland area. Nature focused activities with pond, mud kitchen, tool area, rope swings, hammock, pond and so much more to explore. Bring yourself a cup for a hot drink made on the fire. Dress ready to get muddy in the puddles. £2 per child and £1 additional child. No reach area criteria.

Distance Learning Club

Signed up for a Milton Keynes College distance learning course? Bring your laptop and join us for a little study group where the children have a safe space to play while you work. **Booking Only.**

9.00am - 12.00 noon

Bumps and Babies

Come and join our relaxed, nurturing, sensory baby session. Time together to meet new parents and share experiences.

1.30pm - 3.00pm



MK Together

For information regarding MK Safeguarding Partnership arrangements go to the MK Together website:
www.mktogether.co.uk/

Friday

Baby Massage

Run by MK Baby Massage

5-week course to strengthen bonding and promote relaxation. There is a charge. Please contact the centre or call Helen directly on 07803 042337.

11.30am - 12.30pm

Walk and talk **NEW**

Opportunity to chat to others while taking walks around the local area. Various routes and places to go. Buggy and walkers welcome.

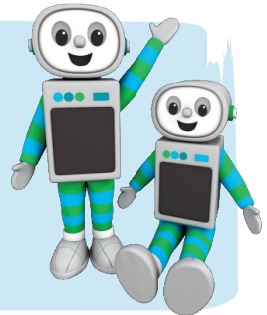
1.30pm - 2.30pm

Time for twos

You are automatically eligible for 15 HOURS FREE early education for your three or four year old

You may also be eligible for 30 hours FREE early education for your three or four year old. To find out if you are eligible visit:
www.childcarechoices.gov.uk

Or visit your local Children's and Family Centre for more help.



Volunteering

Gain some work experience, job opportunities or just help your local community? If so our Children and Family Centres need you! If you have a few hours to spare your local centre has varying roles available, offering accredited volunteer training and enhance your CV.



milton keynes council

Working Parent's Group

The 2022 tour update...



This is a call to all mums, dads, carers, uncles, aunts and big brothers and sisters to come along to any of the sessions below to play with their young person in a safe, supportive and creative environment. All Saturday sessions are from 9.30am to 11.30am with pastry treats available.

Saturday 3rd September 2022

Saturday 24th September 2022

Saturday 22nd October 2022

Saturday 26th November 2022

Saturday 10th December 2022

Rowans Family Centre, Fullers Slade

Sunshine Children's Centre, Furzton

Hedgerows Family Centre, Netherfield

Saplings Children's Centre, Central Bletchley

Moorlands Family Centre, Beanhill

Any enquiries, please contact
daisychain.childrenscentre@milton-keynes.gov.uk

Information

Private room hire

Did you know...? That our centres are available for private hire? They are perfect for parties, meetings and wedding receptions. To find out more details for bookings please contact your local centre.

Parents Courses we offer

- Nuture Programme - 4 weeks
- Baby Incredible Years
- Baby Massage
- Triple P

Family Support

Family support available for all households. Please ask for further details from the team.



**We are a
C card venue**



Healthy Start Vitamins

Healthy Start
vitamins coupons
can be exchanged
at all the centres.

Food Bank

*Please speak to a member of staff at
your local centre.*



Find us on Facebook



Are you registered at your local children's centre? If not, visit:
www.milton-keynes.gov.uk/childrens-centres

Squirrels Children's Centre
Wood End Infants and Pre- School
Redbridge, Stantonbury, Milton Keynes MK14 6BB

01908 317863

M19255