

Recycling and waste at school

Advice, tops tips and resources for Site Managers and Caretakers

On average 80% of school waste is recyclable, mainly consisting of paper, cardboard and food waste.

Recycling is not only good for the environment, but also brings cost savings as MK schools are only charged for the emptying and disposal of rubbish from the black Eurobin.



Raising awareness

For a school to be successful at recycling and reducing waste it is key that everyone is onboard and understands that they are involved and part of the solution. It is important to communicate and educate both staff and students as well as the cleaners about what can and cannot be recycled, welcome their input and encourage their ideas. Consider talking to the Student Council or Eco group, holding an assembly or poster competition to raise awareness and discussion with students.

Speak to your Headteacher about signing up for our free MK Eco Warrior environmental activity booklets at www.Milton-Keynes.gov.uk/ecowarriors.

Waste and recycling collection bins

- **Pink 1100 litre Eurobin** – place items in loose for recycling. Paper, cardboard, plastic bottles and tubs, metal food and drinks cans, foil trays, empty aerosol spray cans, milk and drinks cartons. Please squash down all cardboard boxes.
- **Green 140 litre wheeled bin** – for food and garden waste
- **Black 1100 litre Eurobin** – for all other non-recyclable waste
- **Grey 5 litre caddy / 23 litre green lockable caddy** – for collection of food waste within school

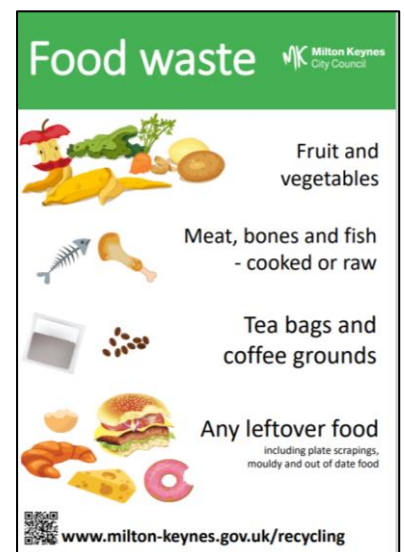
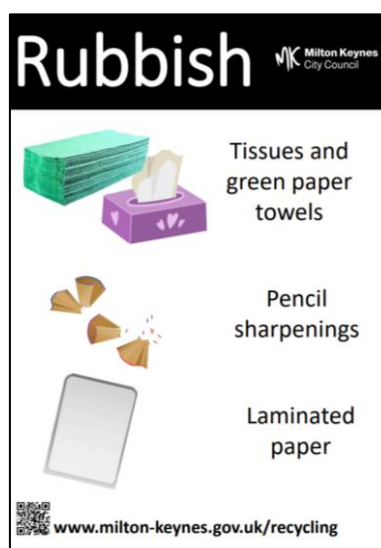
All waste must fit in the bins, no side waste will be accepted. Please ensure the bins are accessible to our crews on your collection day.

Check our webpages www.milton-keynes.gov.uk/mk-recycles for a more detailed listing of what goes in each bin and FAQs.

Recycling and waste at school – page 2

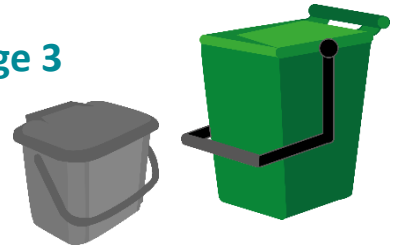
Classroom bins and signage advice

- Ensure each classroom has both recycling and rubbish bins. Don't forget the staff room! You will need to purchase your own classroom bins as these are not provided by MK City Council (MKCC).
- Placing rubbish and recycling bins next to each other with clear signage will ensure good recycling. Bins placed in different areas of the room are regularly misused as people will just use the one closest to them.
- Ensure each classroom has a scrap paper tray so it can be reused.
- Print off bin posters from our webpage www.Milton-Keynes.gov.uk/waste-education-resources. Or create your own posters and personalise for each classroom with photos, drawings, etc.
- Rolls of quantity 60 clear recycling sacks are available to buy from MKCC, but instead we would encourage at the end of each school day to take one recycling bin or a large reusable bag with you and empty each classrooms recycling into it, to then finally empty into the pink Eurobin.



These posters and more available at:
www.Milton-Keynes.gov.uk/waste-education-resources

Recycling and waste at school – page 3



Food waste

Food waste collected by MKCC includes ALL food types - fruit, vegetables, meat – cooked or raw, bones, dairy, plate scrapings, out of date, etc.

Food waste can be collected in classrooms, the dining hall and in the outside spaces. Don't forget Breakfast and After School Clubs, as well as all offices and the Staff Room. We provide 5 litre grey caddies, 23 litre lockable green caddies and/or 140 litre green wheeled bins free of charge.

Ensure caddies are emptied into the green bin at the end of each school day. Caddy liners may be used, which comply with the EN13432 standard and display the 'Seedling logo'. Top tip: place a newspaper at the base of the green bin to absorb any moisture.



It is essential to tackle the causes of food waste. Some solutions could include:

- Improve the eating environment to encourage children to stay longer at the table e.g. play music
- Decorate food waste bins with laminated images of food, pictures, etc
- Ask for older students to volunteer as helpers at lunchtime to teach younger children how to use the food waste bins. This may only need to be done for a short period of time
- Review time allowed for eating to accommodate slow eaters and queuing times
- Identify meals that have the highest volume of waste and speak to suppliers. Review the school menu with a panel of students

Compost bins and water butts

Visit www.Milton-Keynes.gov.uk/composting for advice on how to convert your schools food and garden waste into compost.

This webpage provides details of how to purchase compost bins and water butts at a discounted price.



Recycling and waste at school – page 4



Reuse

- Encouraging the use of reusable water bottles for all students
- Encourage staff to use reusable mugs
- Encourage reusable lunch boxes instead of cling film, foil or plastic sandwich bags
- Find advice at www.Milton-Keynes.gov.uk/waste-education-resources for what to do with old school uniforms

Bulky waste and electrical / electronic waste collection

This is a chargeable service for disposal of bulky items e.g. furniture, large amounts of waste, electricals and electronics, etc. Email yourwaste@Milton-Keynes.gov.uk for a quote.

Litter picking

Visit www.Milton-Keynes.gov.uk/litterpicking for advice and how to loan out litter pick sets free of charge.

Other things to recycle

There are other opportunities to recycle items not collected by MKCC, some of which are attached to fundraising schemes, these include:

- Crisp packets and more – local supermarket
- Old clothes - Bag2school and the Salvation Army



Contact Us

For general enquiries, issues with Eurobin collections, bulky waste quotes, ordering food waste caddies, etc. contact customerservices@Milton-Keynes.gov.uk