

Sessions for parent/carers and children

Monday

Little Windmills	A calm and nurture centred session for babies and expectant parents.	10.00am - 11.30am
Milk Mentors	Breast Feeding support and advice. Drop- In.	10.00am - 11.30am
Make and Do / Outdoor Explorers	Join us in a fun session of crafts and activities. Come dressed for outside play.	1.45pm - 2.45pm

Sensory Time

Monday, Tuesday and Thursday 9.30am - 4.00pm

Wednesday 9.30am - 12.00 noon

Book our calm, relaxing room with special lighting and music. Please call to book your time.

Tuesday

Baby Clinic	Rowans Family Centre Moorfoot, Fullers Slade. MK11 2BD An opportunity to have your baby weighed.	9.30am - 11.30am
Volunteers Course	<i>Starting 20th September</i> A 10 week course for anyone wishing to volunteer in children and family centres. Crèche available. Please book your place.	9.30am - 11.30am
Family Learning Workshops, Adult Learning and Parenting Courses	Please contact us to find out about our current courses.	9.30am - 11.30am

Development Checks

Tuesdays, 1.00pm - 4.15pm and Thursdays, 9.15am - 12.30pm

Health visitor clinic for your child's development checks. **Pre booked appointments only.**

Wednesday

Stay and Play	A wide range of play experiences for young children to support their social, physical and language development.	10.00am - 11.30am
Windmill Lending Library	Pop by and choose a book to borrow for your child and have a cuppa in our café.	1.30pm - 3.30pm

Thursday

Ragdolly Anna's	Funded session for families living in New Bradwell and Wolverton 1-4 year olds. Followed by a cuppa and play.	10.00am - 10.45am
Story Sacks Course	<i>Starting 15th September</i> A 10 week course with crèche for you to design and make your own story sack. Please book your place.	1.00pm - 2.30pm
Family Learning Workshops and Parenting Courses	Please contact us to find out about our current courses.	1.00pm - 3.00pm

Community Food Share

Tuesday, Wednesday and Thursday 9.30am - 3.30pm

Data Protection Privacy Statement

We collect and use information about you so that we can provide you with the best services possible. Full details about how we use this data and the rights you have around this can be found at www.milton-keynes.gov.uk/cafcprivacy. If you have any data protection queries, please contact the Data Protection Officer at data.protection@milton-keynes.gov.uk

Friday

Feel Good Friday Drop in Café	Promoting healthy eating, recipes, wellbeing etc.	9.30am - 11.30am <i>Craft Café - 1st Friday of the month</i>
Baby Soundstart	A 10 week course. Join us for a fun lively session of songs and actions to develop your child's musical potential and enjoyment of music from an early age. Please call us to book your place.	10.00am - 11.00am
Story and Song Time	Wolverton Library Creed Street, Wolverton MK12 5LY	2.00pm - 2.30pm

The Millers

Monday to Friday 12.15pm - 3.15pm

2-year funded nursery sessions with Acorn Childcare. **Term time only.**

Community Learning Courses

Enrol in 'English for Speakers of Other languages (ESOL)' or 'Basic Skills' Courses.

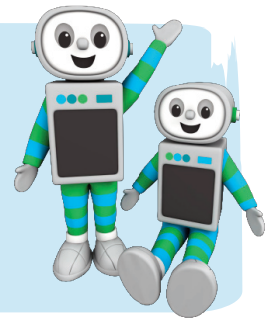
Time for twos

You are automatically eligible for 15 HOURS FREE early education for your three or four year old

You may also be eligible for 30 hours FREE early education for your three or four year old. To find out if you are eligible visit:

www.childcarechoices.gov.uk

Or visit your local Children's and Family Centre for more help.



MK Together

For information regarding MK Safeguarding Partnership arrangements go to the MK Together website: **www.mktogether.co.uk/**



Working Parent's Group

The 2022 tour update...

This is a call to all mums, dads, carers, uncles, aunts and big brothers and sisters to come along to any of the sessions below to play with their young person in a safe, supportive and creative environment. All Saturday sessions are from 9.30am to 11.30am with pastry treats available.

Saturday 3rd September 2022
Saturday 24th September 2022
Saturday 22nd October 2022
Saturday 26th November 2022
Saturday 10th December 2022

Rowans Family Centre, Fullers Slade
Sunshine Children's Centre, Furzton
Hedgerows Family Centre, Netherfield
Saplings Children's Centre, Central Bletchley
Moorlands Family Centre, Beanhill

Any enquiries, please contact
daisychain.childrenscentre@milton-keynes.gov.uk

Support and Advice

We offer family support for parents/carers. If you have any concerns with your home or family life or your child's development or behaviour then please speak to a member of our team at The Windmill Children's Centre. We can help you to access the support and help you may need.

Volunteers... WE NEED YOU

Would you like to be part of our community, gain work experience find job opportunities?

We have opportunities within our children's centre and there is also training available. Speak to Simone or Anna.

Are you registered at your local children's centre? If not, visit:
www.milton-keynes.gov.uk/childrens-centres



Find us on Facebook
The Windmill Children's Centre



The Windmill Children's Centre Programme

Services and support for families with under fives

Open Monday - Thursday 8.30am - 4.30pm
and Friday 8.30am - 4.00pm

Windmill Reach Area:

New Bradwell, Old Wolverton, Wolverton and Wolverton Mill.

The Windmill Children's Centre
New Bradwell School, Bounty Street, New Bradwell, MK13 0BQ
01908 312473

www.milton-keynes.gov.uk/childrens-centre