



Pebbles Children's Centre Programme

Services and support for families with under fives

Open Monday - Thursday 8.30am - 4.30pm
and Friday 8.30am - 4.00pm

Pebbles Reach Area:

Fishermead, Springfield, Oldbrook North, Monkston, Monkston Park,
Kents Hill and Woughton on the Green.

www.milton-keynes.gov.uk/childrens-centre

Sessions for parent/carers and children

Monday

Morning meet-up	Come and join us for a light breakfast, chat, and play. You can come with or without your children.	9:00am - 10:30am
Drop-in session	At Springfield House Drop-in is for residents A member of the Pebbles team will be available to support and let you know what the children centre can offer you and your children.	10:00am - 11:00am
Baby Explorers	Come and join our relaxed, nurturing, sensory baby session for non-walkers. Time together to meet new parents and share experience	1:00pm - 2:30pm

Special Guardianship Drop-In

10:00am - 11:30am

This is an opportunity for Special Guardians to get to know our Post-SGO Support Service, to ask any questions and to seek advice, information, and support about the children that they look after.

Once a month – please contact centre for more information

Children of Foster Carers Group

4:00pm - 5:30pm

This group is for the children of our foster carers, to have fun and celebrate the role that they play within their homes.

Once a month – please contact centre for more information



MK Together

For information regarding MK Safeguarding Partnership arrangements go to the MK Together website: www.mktogether.co.uk/

Tuesday

Fun Fitness 4 Women	Come and get fit with us in this fun active session. <i>This session is run by All People Active</i>	9:15am - 10:15am Term time only
Stay and Play	Fun creative activities for both you and your child to help support their learning and development. This session can sometimes get a little messy so please make sure dress for mess.	10:00am - 11:30am
Help Hub	Do you need support with form filling for work, school, or home? Come and join us and see if we can support you. We will have different agencies coming to this session with specialist support please check our Facebook page to see who is attending.	1:00pm - 2:30pm

Wednesday

Morning Meet up	Come and join us for a light breakfast, chat, and play. You can come with or without your children.	9:00am - 10:30am
Midwife appointments	Antenatal clinic bookings are made through the health service	9:00am - 4:00pm
Health Visitor Development Checks	Bookings are made through the 0-19s health service.	9.15am - 11.30am

Well-being Café @ Willows First School

9:00am - 10:00am

Join the staff at Willows First school for a cup of tea, chat, and advice. A member of the Pebbles Team will be available during this session.

Last Wednesday of the month – please contact Willows school for more details

Wednesday - continued

ESOL	English for speakers of other languages 1:00pm - 2:30pm This course is suitable for parents and carers where English is not their first language. Booking required. Please contact Pebbles for more details.
-------------	---

Pop in and Play	Why not come see us after school pick up for a cup of tea and catch up, while the children play. 3:00pm - 4:00pm
------------------------	--

Parenting Programmes

1:00pm - 2:30pm

A rolling of programme of courses are available to support parenting skills, child development, healthy lifestyles and positive mental health and wellbeing.

Booking required- Please contact Pebbles for to see what course we are currently running.

Thursday

Story time	At Kingston Library 10:00am - 11:00am A member of the Pebbles team will be available to support and let you know what the children centre can offer you and your children.
-------------------	--

Sensory Extra	Come and join us at sensory extra we will be exploring different activities that will help develop our senses. 10:00am - 11:15am This session is for children that may find our Stay and Play sessions a little overwhelming.
----------------------	--

Stay and Play	Fun creative activities for both you and your child to help support their learning and development. This session can sometimes get a little messy so please make sure dress for mess. 1:00pm - 2:30pm
----------------------	---

Friday

Midwife appointments	Antenatal clinic bookings are made through the health service	9:00am - 4:00pm
Baby Explorers	Come and join our relaxed, nurturing, sensory baby session for non-walkers. Time together to meet new parents and share experiences	10:00am - 11:30am
Story and Song Time	Come and join us as we explore stories, songs, and rhymes. This session is aimed at children that are getting ready to go to pre-school or school.	1:00pm - 2:30pm

Foster carers drop- in 12:30pm - 2:30pm

A safe space for carers to meet up for a coffee and a catch up with other carers as to how things have been going in their fostering role.

Once a month – please contact centre for more information

Support and Advice

If you need any support or advice please contact the centre for more information.

We work in partnership with a host of agencies in Milton Keynes, so please reach out. No amount of help needed is ever too big or small.

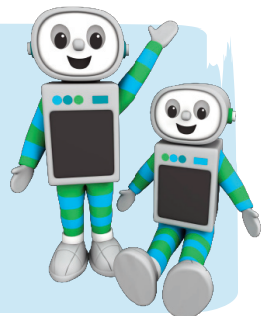
Time for twos

You are automatically eligible for 15 HOURS FREE early education for your three or four year old

You may also be eligible for 30 hours FREE early education for your three or four year old. To find out if you are eligible visit:

www.childcarechoices.gov.uk

Or visit your local Children's and Family Centre for more help.



Information

Private room hire

Did you know...? That our centres are available for private hire? They are perfect for parties, meetings and wedding receptions. To find out more details for bookings please contact your local centre.

Data Protection Privacy Statement

We collect and use information about you so that we can provide you with the best services possible. Full details about how we use this data and the rights you have around this can be found at www.milton-keynes.gov.uk/cafcprivacy. If you have any data protection queries, please contact the Data Protection Officer at data.protection@milton-keynes.gov.uk

Volunteering

Gain some work experience, job opportunities or just help your local community? If so our Children and Family Centres need you! If you have a few hours to spare your local centre has varying roles available, offering accredited volunteer training and enhance your CV.



Healthy Start Vitamins

Healthy Start vitamins coupons can be exchanged at all the centres.

Food Bank

Please speak to a member of staff at your local centre.



Find us on Facebook

Are you registered at your local children's centre? If not, visit:
www.milton-keynes.gov.uk/childrens-centres

Pebbles Children's Centre

Newlyn Place, Fishermead, Milton Keynes, MK6 2LP
01908 240556