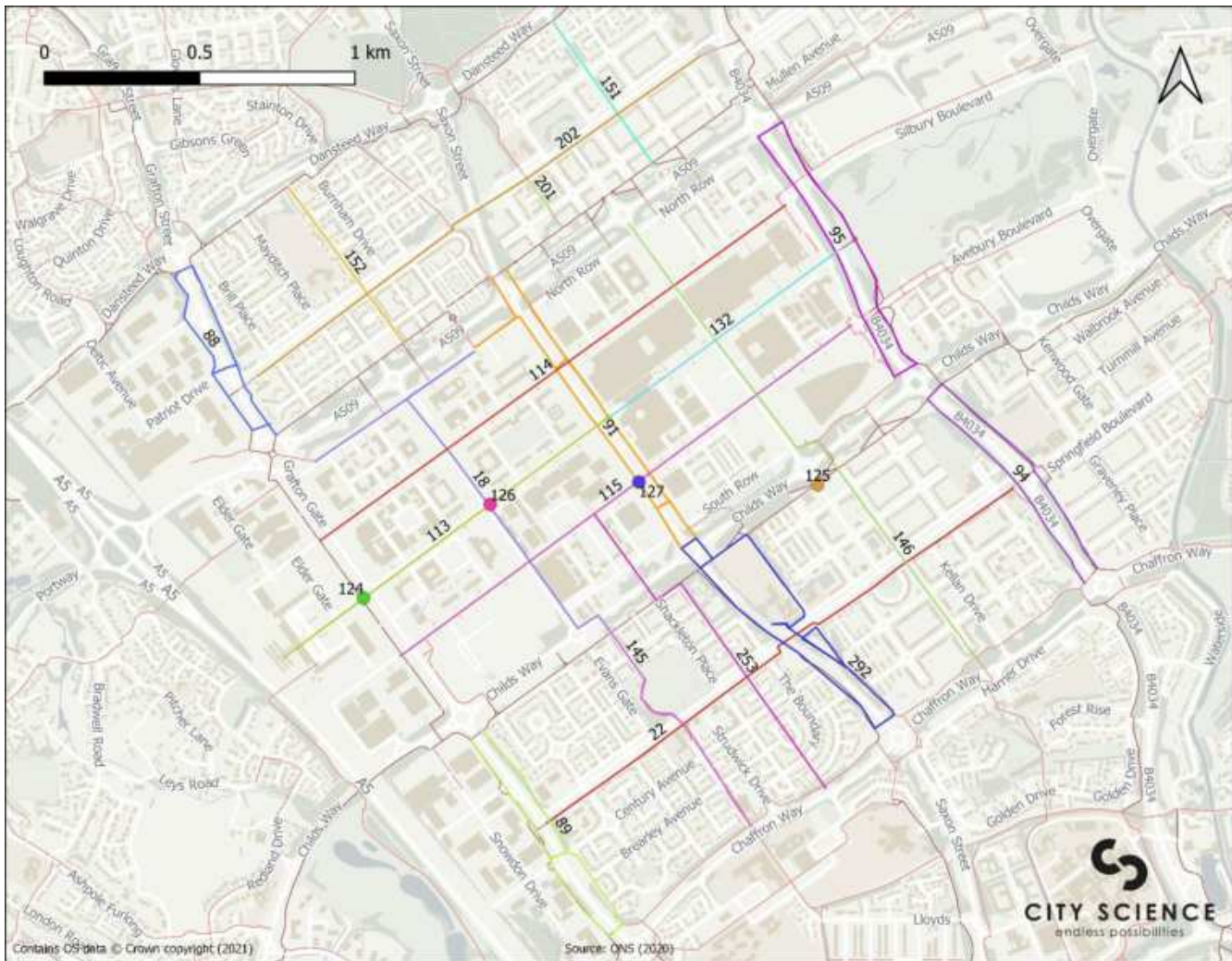


Appendix B – Full List of LCWIP Schemes (Maps)

1.1 Central Milton Keynes

1.1.1 CMK all schemes



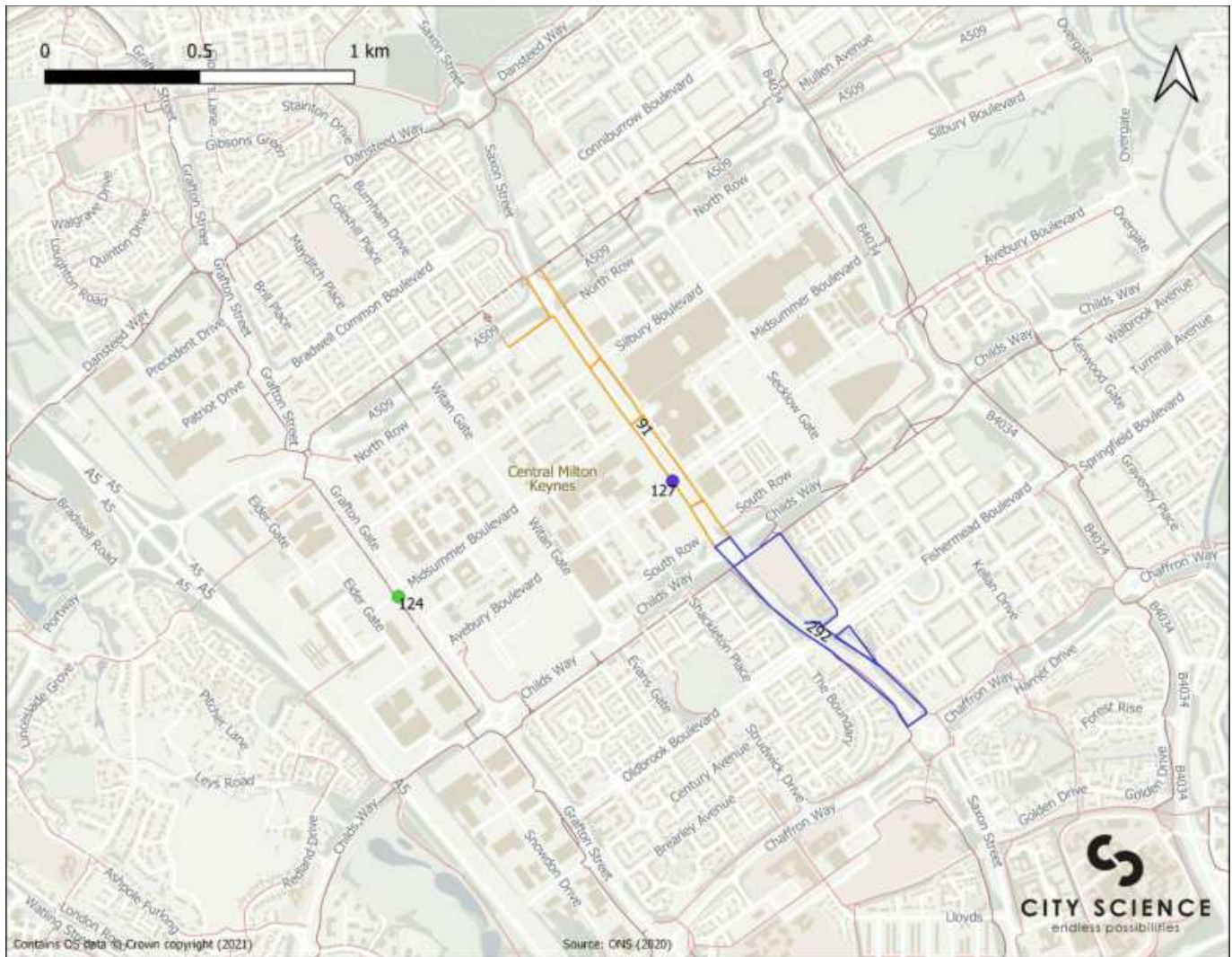
Central Milton Keynes: All Schemes

- Super Route
- Redway

Schemes:

- | | | |
|---------------------------------|--|---|
| 113 - MKC to CMK (ML) | 151 - Conniburrow (ML) | 89 - V6 Grafton Street3 (ML) (RI) |
| 114 - Silbury Boulevard (ML) | 152 - Bradwell Common (ML) | 91 - V7 Saxon Street2 (ML) (RI) |
| 115 - Avebury Boulevard (ML) | 18 - CMK (ML) | 94 - V8 Marlborough Street2 (ML) (RI) |
| 132 - CMK to Campbell Park (ML) | 201 - Conniburrow Redway Gap (ML) | 95 - V8 Marlborough Street3 (RI) |
| 145 - Oldbrook (ML) | 202 - Bradwell Common - Conniburrow (ML) | ● 124 - MKC crossing with V6 (RI) |
| 146 - Fishermead to CMK (ML) | 22 - Fishermead (ML) (LS) | ● 125 - Pentewan Gate crossing (RI) |
| | 253 - Verity Place (ML) | ● 126 - Midsummer Boulevard Crossing (RI) |
| | 292 - V7 Saxon Street3 (ML) (RI) | ● 127 - Gates at Avebury Blvd and V7 (RI) |
| | 88 - V6 Grafton Street2 (ML) (RI) | |

1.1.2 CMK Quick Wins



Central Milton Keynes: Quick Wins

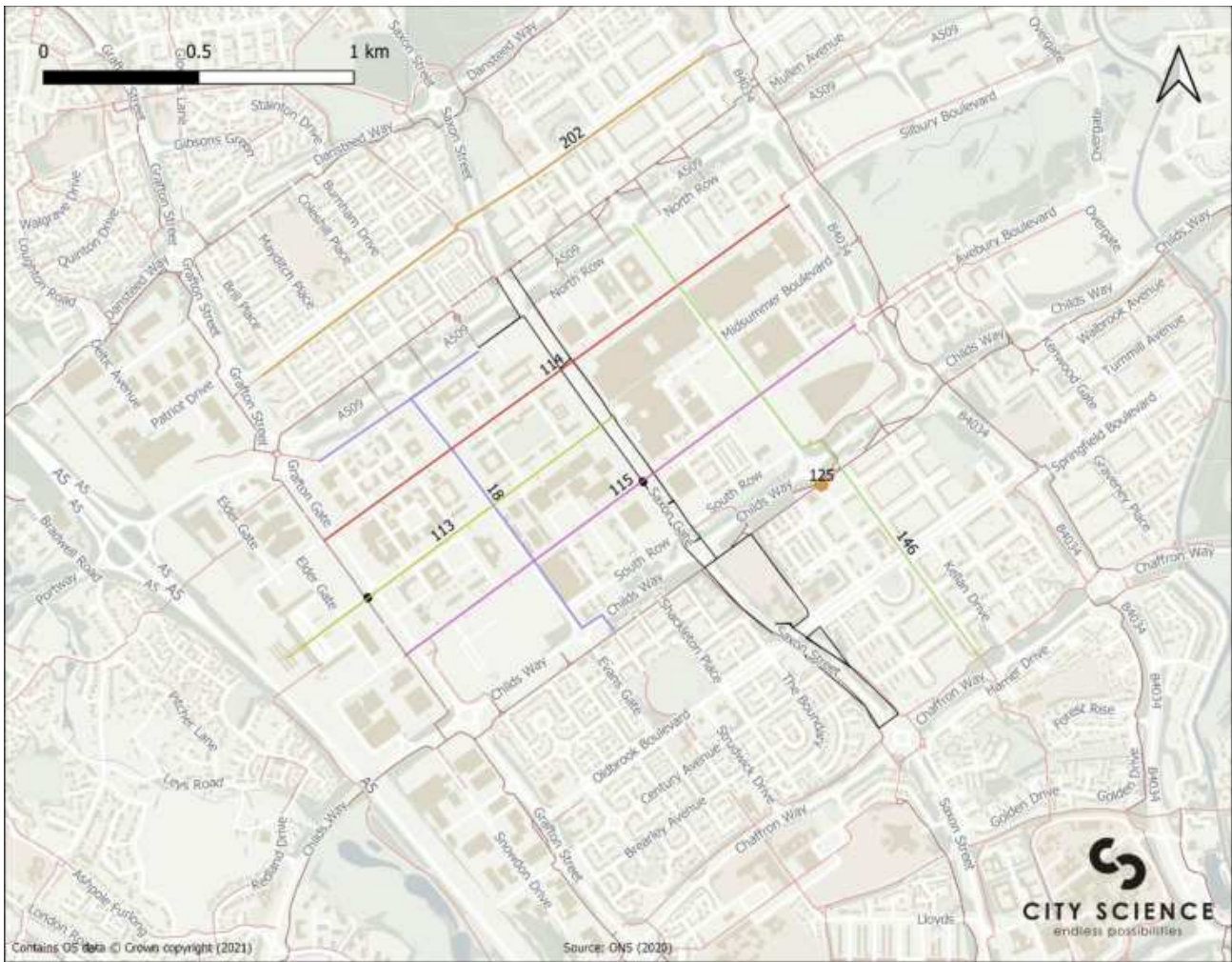
— Super Route
— Redway

Schemes:

— 292 - V7 Saxon Street3 (ML) (RI)
— 91 - V7 Saxon Street2 (ML) (RI)

● 124 - MKC crossing with V6 (RI)
● 127 - Gates at Avebury Blvd and V7 (RI)

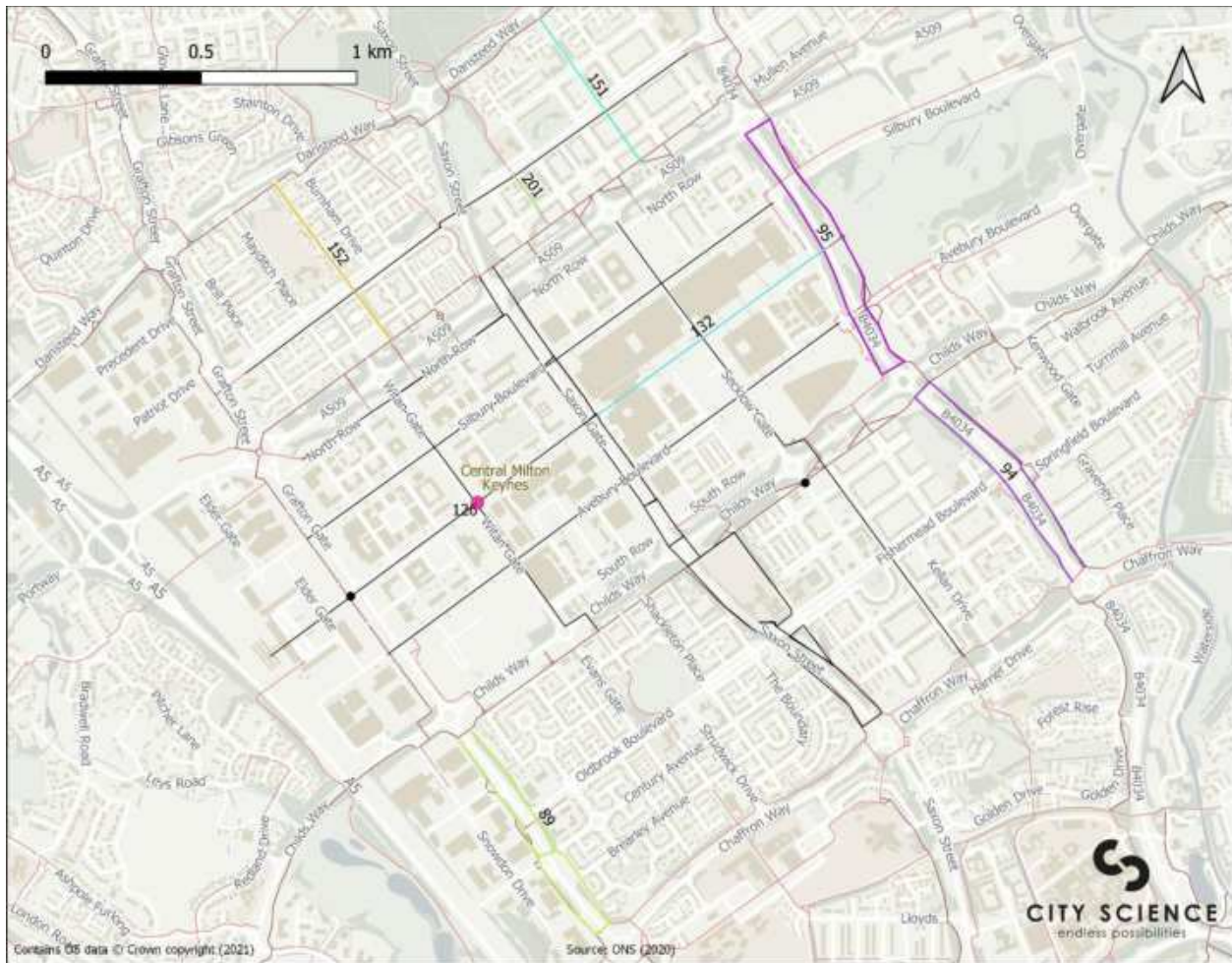
1.1.3 CMK Short Term



Central Milton Keynes: Short Term

- | | | |
|-------------------------------|--------------------------------|--|
| — Super Route | Schemes: | — 146 - Fishemead to CMK (ML) |
| — Redway | — 113 - MKC to CMK (ML) | — 18 - CMK (ML) |
| — Previous Term LCWIP Schemes | — 114 - Silbury Boulevard (ML) | — 202 - Bradwell Common - Conniburrow (ML) |
| | — 115 - Avebury Boulevard (ML) | ● 125 - Pentewan Gate crossing (RI) |

1.1.4 CMK Medium Term



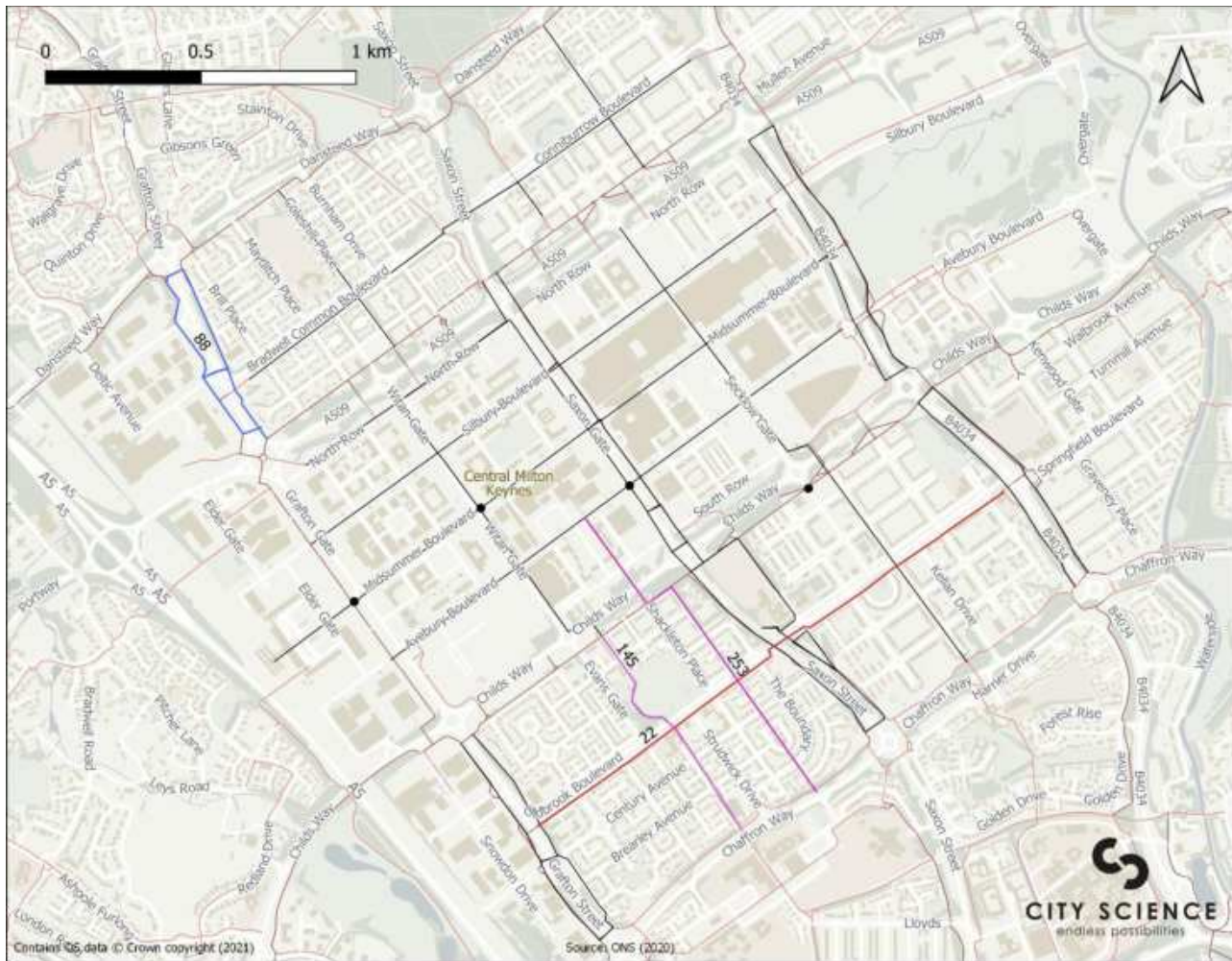
Central Milton Keynes: Medium Term

- Super Route
- Redway
- Previous Term LCWIP Schemes

- Schemes:**
- 132 - CMK to Campbell Park (ML)
 - 151 - Conniburrow (ML)
 - 152 - Bradwell Common (ML)
 - 201 - Conniburrow Redway Gap (ML)

- 89 - V6 Grafton Street3 (ML) (RI)
- 94 - V8 Marlborough Street2 (ML) (RI)
- 95 - V8 Marlborough Street3 (RI)
- 126 - Midsummer Boulevard Crossing (RI)

1.1.5 CMK Long Term

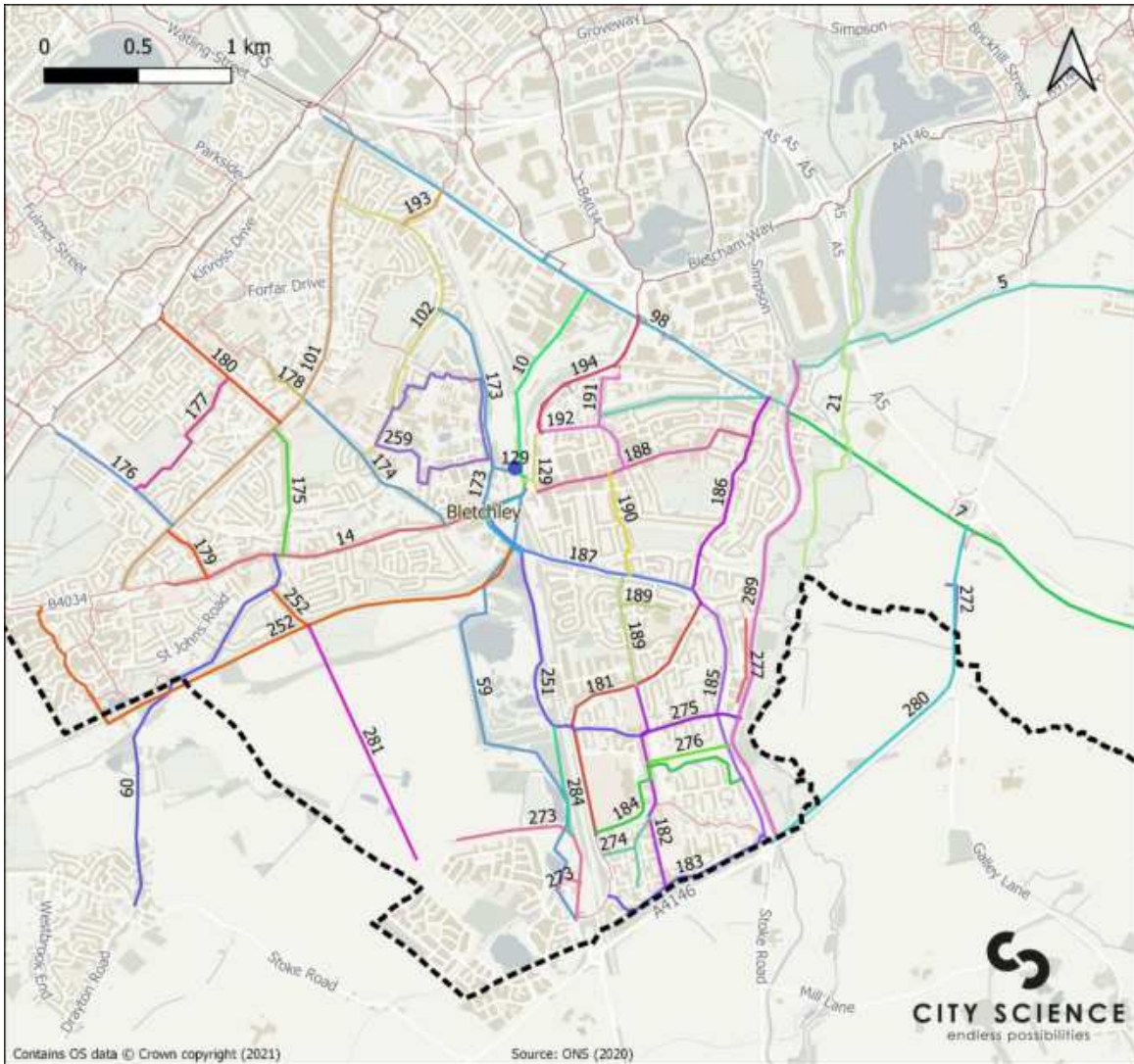


Central Milton Keynes: Long Term

- | | |
|-------------------------------|-------------------------------------|
| — Super Route | Schemes: |
| — Redway | — 145 - Oldbrook (ML) |
| — Previous Term LCWIP Schemes | — 22 - Fishermead (ML) (L5) |
| | — 253 - Verity Place (ML) |
| | — 88 - V6 Grafton Street2 (ML) (RI) |

1.2 Bletchley

1.2.1 All schemes



Bletchley: All Schemes

- Super Route
- Redway

Schemes:

- | | | |
|---|--|--|
| 10 - Bletchley North (ML) (LS) | 181 - Drayton Road (ML) | 259 - Bletchley Park (ML) |
| 101 - Whaddon Way (ML) | 182 - Lakes Estate N-S (ML) | 272 - Eaton Leys (ML) |
| 102 - Whalley Drive (ML) | 183 - Lamond Drive (ML) | 273 - Furzey Way (ML) |
| 129 - Bletchley Station access (ML) (LS) (RI) | 184 - Lakes Estate E-W (ML) | 274 - Lakes Estate SW (ML) |
| 14 - Buckingham Road (ML) | 185 - Stoke Road (ML) | 275 - Lakes Estate EW (ML) |
| 173 - Sherwood Drive (ML) (RI) | 186 - Manor Road (ML) | 276 - Waterhall Park (ML) |
| 174 - Rickley Lane (ML) | 187 - Water Eaton Road (ML) | 277 - Lakes Estate E (ML) |
| 175 - Shenley Drive (ML) | 188 - Bletchley High Street (ML) (RI) | 280 - A4146 (ML) |
| 176 - Tattenhoe Lane (ML) (RI) | 189 - Water Eaton (ML) | 281 - Newton Leys New Estate (ML) |
| 177 - Far Bletchley (ML) | 190 - Westfield Road (ML) | 283 - Water Eaton Road Link (ML) |
| 178 - Cornwall Grove (ML) | 191 - North Street (ML) | 284 - Blue Lagoon to Newton Leys (ML) |
| 179 - Tattenhoe Lane Part 2 (ML) | 192 - Princes Way (ML) (RI) | 289 - Canal Railway to South (RI) |
| 180 - Shenley Road (ML) | 193 - Bletchley North Rail Crossing (ML) | 5 - Bletchley to Bow Brickhill (ML) |
| | 194 - V7 Bletchley North (RI) | 59 - Newton Leys (ML) |
| | 21 - Fenny Stratford (ML) (RI) | 60 - Newton Longville (ML) |
| | 251 - Blue Lagoon (ML) | 7 - Bletchley to Little Brickhill (ML) (RI) (LS) |
| | 252 - South Bletchley Bypass (ML) | 98 - Watling Street (ML) |
| | | ● 129 - Bletchley Station access (ML) (LS) (RI) |

1.2.2 Bletchley Quick Wins



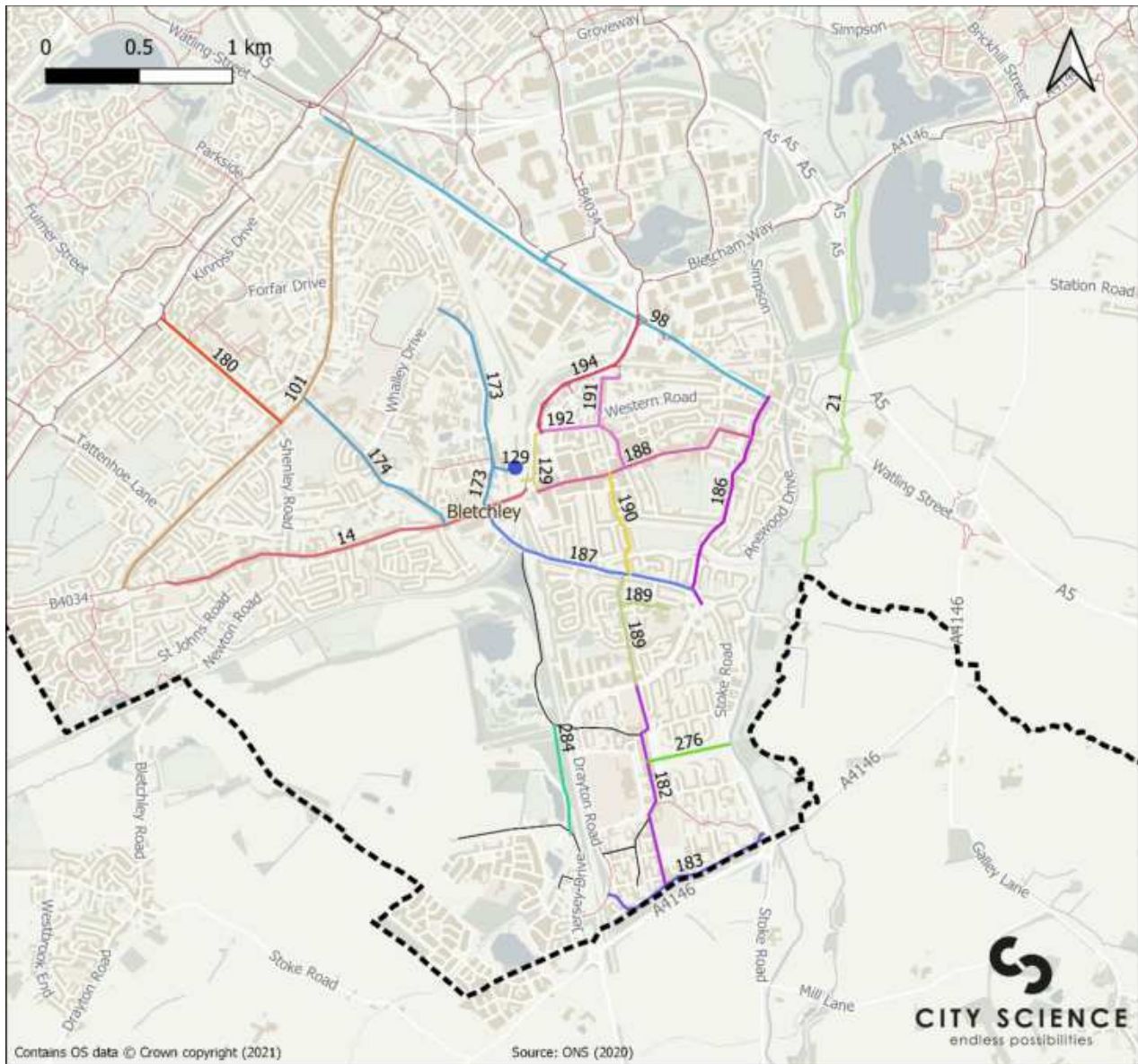
Bletchley: Quick Wins

- Super Route
- Redway

Schemes:

- 251 - Blue Lagoon (ML)
- 273 - Furzey Way (ML)
- 274 - Lakes Estate SW (ML)

1.2.3 Bletchley Short Term



Bletchley: Short Term

- Super Route
 - Redway
 - Previous Term LCWIP Schemes
- Schemes:**
- 101 - Whaddon Way (ML)
 - 129 - Bletchley Station access (ML) (LS) (RI)
 - 14 - Buckingham Road (ML)
 - 173 - Sherwood Drive (ML) (RI)
 - 174 - Rickley Lane (ML)
 - 180 - Shenley Road (ML)
 - 182 - Lakes Estate N-S (ML)
 - 183 - Lamond Drive (ML)
 - 186 - Manor Road (ML)
 - 187 - Water Eaton Road (ML)
 - 188 - Bletchley High Street (ML) (RI)
 - 189 - Water Eaton (ML)
 - 190 - Westfield Road (ML)
 - 191 - North Street (ML)
 - 192 - Princes Way (ML) (RI)
 - 194 - V7 Bletchley North (RI)
 - 276 - Waterhall Park (ML)
 - 284 - Blue Lagoon to Newton Leys (ML)
 - 98 - Watling Street (ML)
 - 129 - Bletchley Station access (ML) (LS) (RI)

#

1.2.4 Bletchley Medium Term



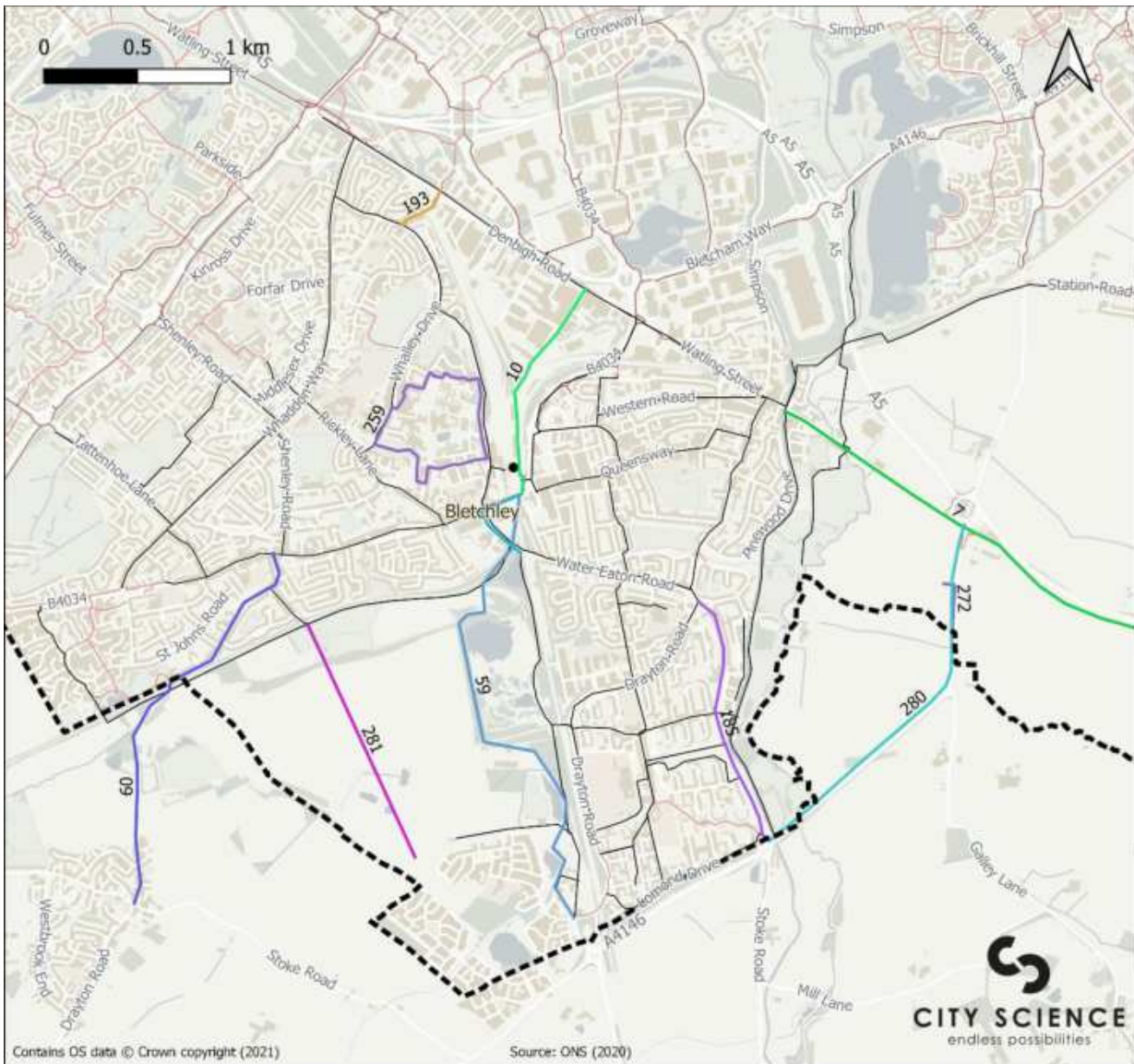
Bletchley: Medium Term

- Super Route
- Redway
- Previous Term LCWIP Schemes

Schemes:

- 102 - Whalley Drive (ML)
- 175 - Shenley Drive (ML)
- 176 - Tattenhoe Lane (ML) (RI)
- 177 - Far Bletchley (ML)
- 178 - Cornwall Grove (ML)
- 179 - Tattenhoe Lane Part 2 (ML)
- 252 - South Bletchley Bypass (ML)
- 275 - Lakes Estate EW (ML)
- 277 - Lakes Estate E (ML)
- 289 - Canal Railway to South (RI)
- 5 - Bletchley to Bow Brickhill (ML)
- 181 - Drayton Road (ML)
- 184 - Lakes Estate E-W (ML)

1.2.5 Bletchley Long Term



Bletchley: Long Term

— Super Route

— Redway

— Previous Term LCWIP Schemes

Schemes:

10 - Bletchley North (ML) (LS)

185 - Stoke Road (ML)

193 - Bletchley North Rail Crossing (ML)

259 - Bletchley Park (ML)

272 - Eaton Leys (ML)

280 - A4146 (ML)

281 - Newton Leys New Estate (ML)

283 - Water Eaton Road Link (ML)

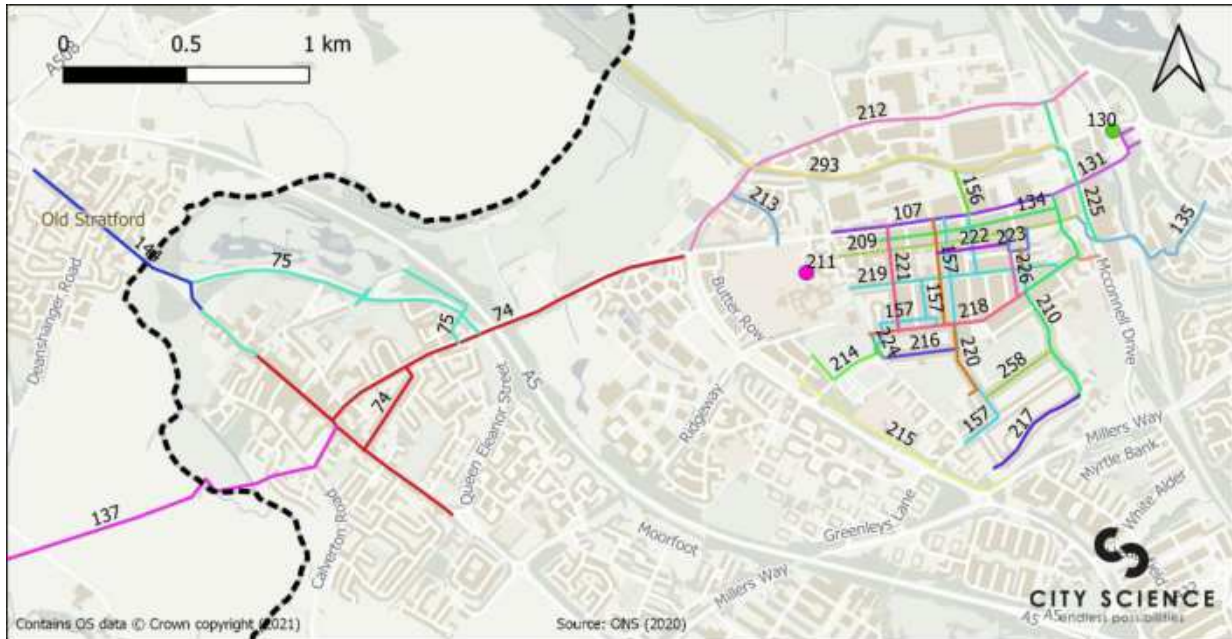
59 - Newton Leys (ML)

60 - Newton Longville (ML)

7 - Bletchley to Little Brickhill (ML) (RI) (LS)

1.3 Wolverton & Stony Stratford

1.3.1 All Schemes



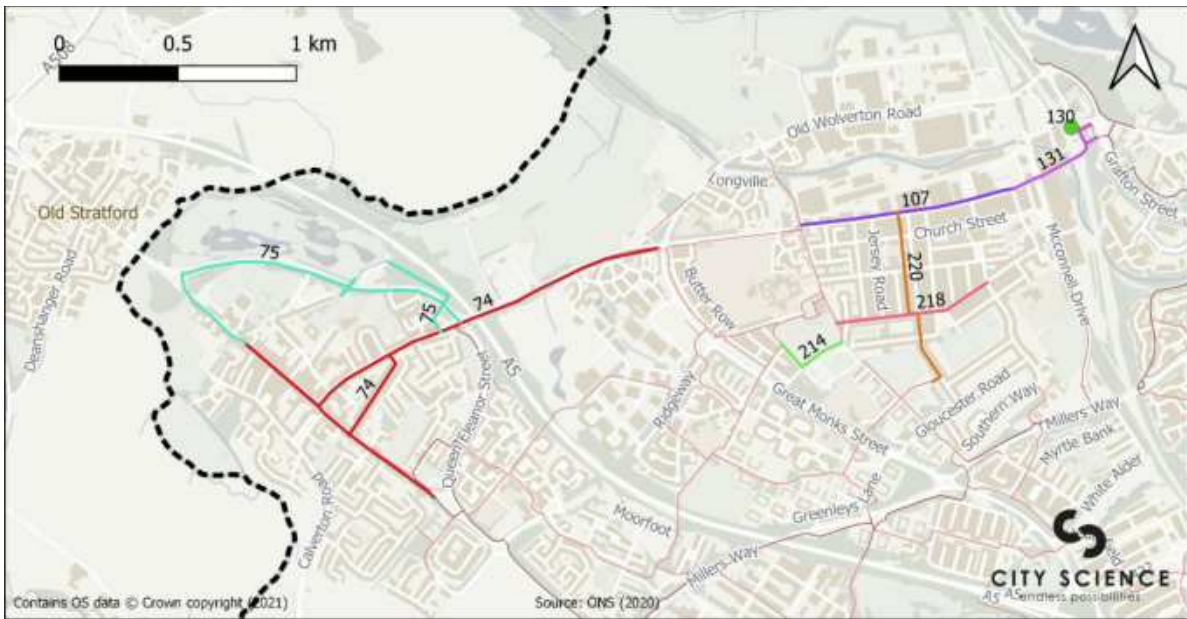
Wolverton & Stony Stratford: All Schemes

- Super Route
- Redway

Schemes:

- | | | |
|---|-------------------------------------|---|
| 107 - Wolverton (ML) | 210 - Wolverton NS (LS) | 224 - Wolverton Playing Field2 (ML) |
| 131 - Wolverton Station link (ML) | 212 - Old Wolverton Road (ML) | 225 - McConnell Drive (ML) |
| 134 - Wolverton Garage Link1 (LS) | 213 - Trinity Road (ML) | 226 - Wolverton Garage Link3 (ML) |
| 135 - Wolverton Canal Railway crossing (ML) | 214 - Wolverton Playing Field1 (ML) | 227 - Radcliffe Street (ML) |
| 137 - Deanshanger (ML) | 215 - V5 Great Monks Street (ML) | 228 - Wolverton Play Space Cut Through (ML) |
| 144 - Old Stratford (ML) | 216 - Furze Way (ML) | 258 - Marina Drive (LS) |
| 156 - Wolverton Canal Link (ML) | 217 - Southern Way (ML) | 293 - Canal North to Wolverton (RI) |
| 157 - Wolverton Minor Routes (ML) | 218 - Western Road (ML) | 74 - Stony Stratford1 (ML) (RI) (LS) |
| 209 - Church Street (ML) | 219 - Aylesbury Street (ML) | 75 - Stony Stratford2 (ML) |
| | 220 - Windsor Street (ML) | ● 130 - Wolverton Station access (ML) (LS) (RI) |
| | 221 - Anson Road (ML) | ● 211 - Radcliffe School (LS) |
| | 222 - Wolverton Garage Link2 (ML) | |
| | 223 - The Agora (ML) | |

1.3.2 Short Term



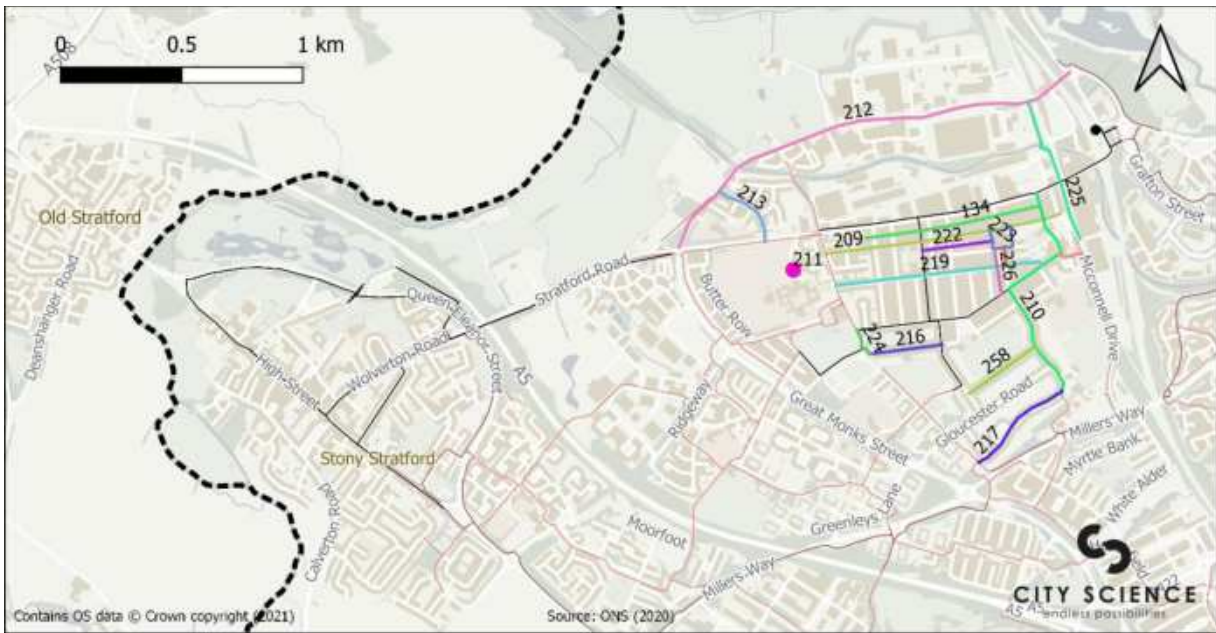
Wolverton & Stony Stratford: Short Term

— Super Route
 — Redway

Schemes:

- 107 - Wolverton (ML)
- 131 - Wolverton Station link (ML)
- 214 - Wolverton Playing Field1 (ML)
- 218 - Western Road (ML)
- 220 - Windsor Street (ML)
- 74 - Stony Stratford1 (ML) (RI) (LS)
- 75 - Stony Stratford2 (ML)
- 130 - Wolverton Station access (ML) (LS) (RI)
- 211 - Radcliffe School (LS)

1.3.3 Medium Term



Wolverton & Stony Stratford: Medium Term

- Super Route
 - Redway
 - Previous Term LCWIP Schemes
- Schemes:**
- | | | |
|-----------------------------------|-----------------------------------|---|
| 134 - Wolverton Garage Link1 (LS) | 210 - Wolverton NS (LS) | 224 - Wolverton Playing Field2 (ML) |
| 209 - Church Street (ML) | 212 - Old Wolverton Road (ML) | 225 - McConnell Drive (ML) |
| | 213 - Trinity Road (ML) | 226 - Wolverton Garage Link3 (ML) |
| | 216 - Furze Way (ML) | 227 - Radcliffe Street (ML) |
| | 217 - Southern Way (ML) | 228 - Wolverton Play Space Cut Through (ML) |
| | 219 - Aylesbury Street (ML) | 258 - Marina Drive (LS) |
| | 222 - Wolverton Garage Link2 (ML) | 211 - Radcliffe School (LS) |
| | 223 - The Agora (ML) | |

1.3.4 Long Term



Wolverton & Stony Stratford: Long Term

- Super Route
- Redway
- Previous Term LCWIP Schemes

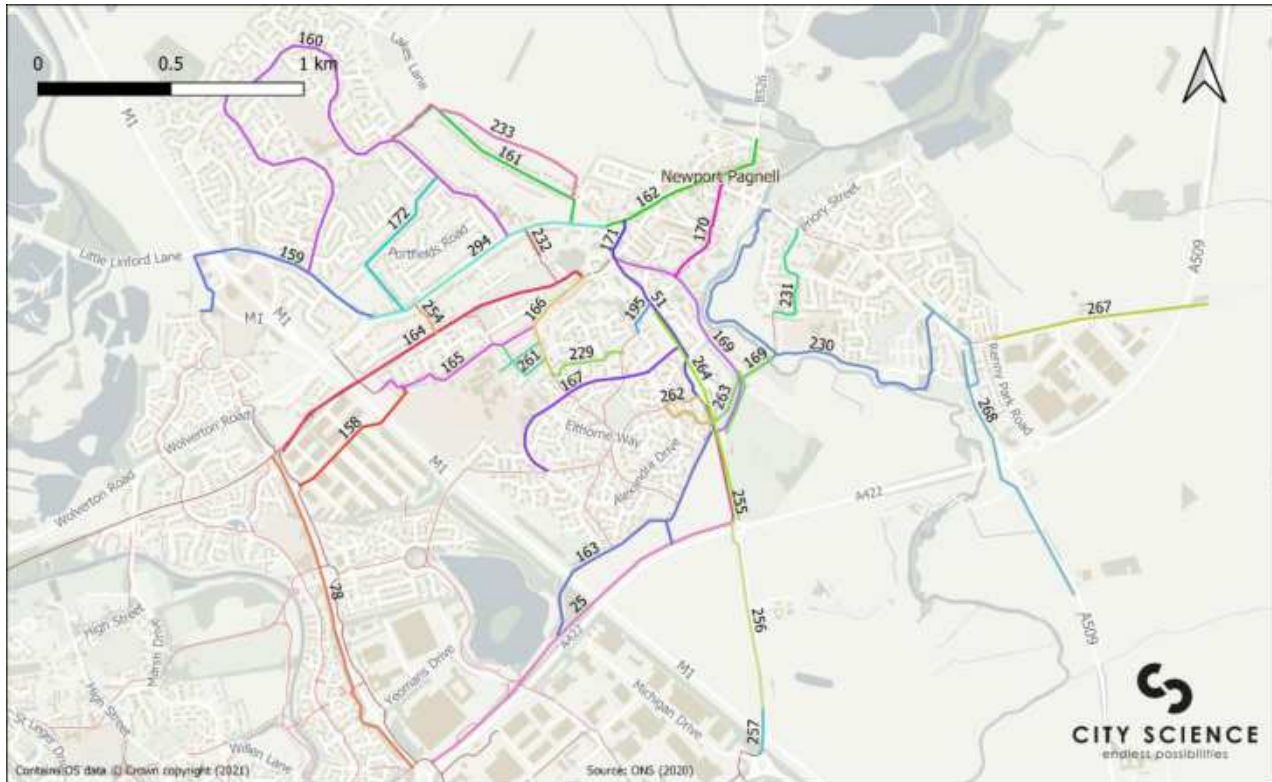
Schemes:

- 135 - Wolverton Canal Railway crossing (ML)
- 137 - Deanshanger (ML)
- 144 - Old Stratford (ML)

- 156 - Wolverton Canal Link (ML)
- 157 - Wolverton Minor Routes (ML)
- 215 - V5 Great Monks Street (ML)
- 221 - Anson Road (ML)
- 293 - Canal North to Wolverton (RI)

1.4 Newport Pagnell

1.4.1 All schemes



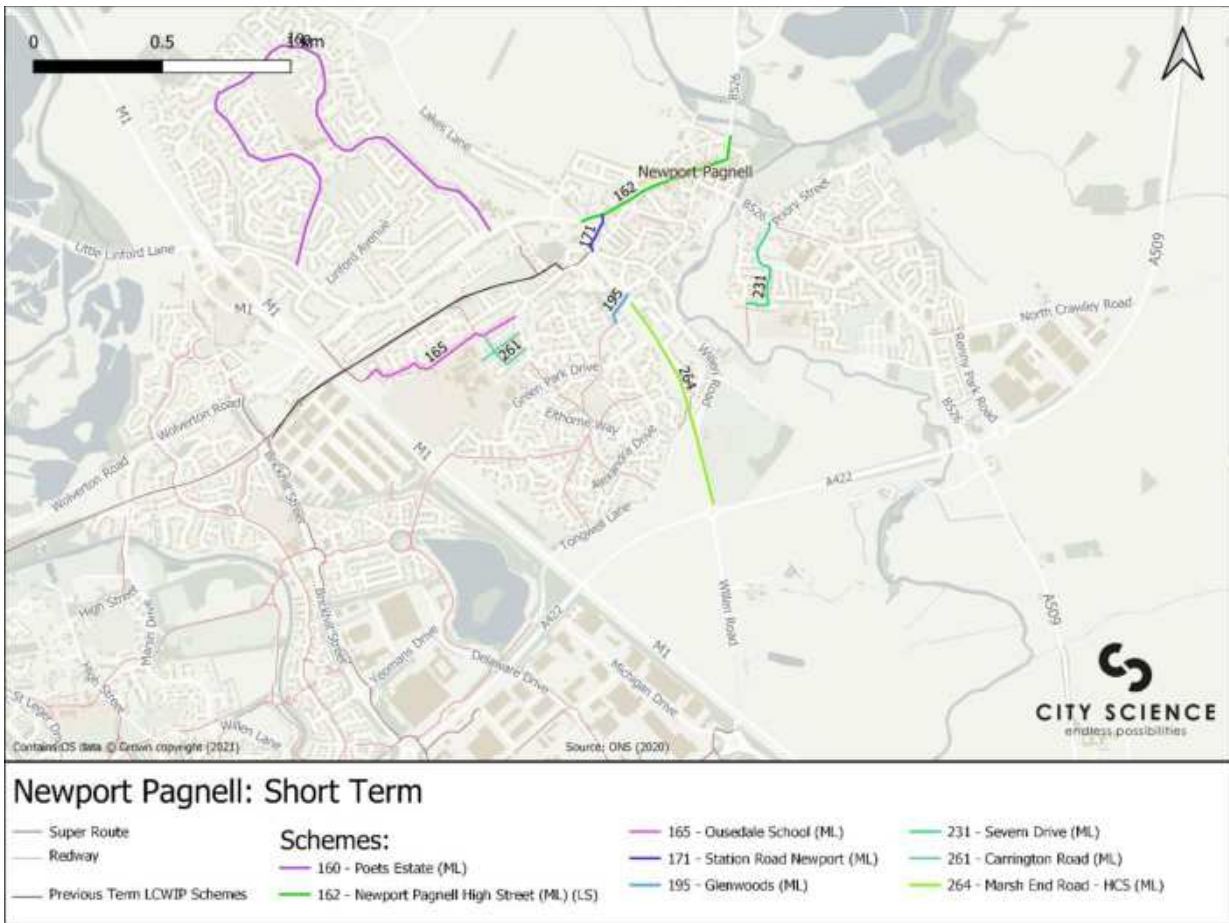
Newport Pagnell: All Schemes

- Super Route
 - Redway
- Schemes:**
- | | | | |
|---|---------------------------------|------------------------------|---|
| 158 - Blakelands Estate M1 Crossing (ML) | 164 - Railway Walk Newport (RI) | 229 - Holland Way (ML) | 261 - Carrington Road (ML) |
| 159 - Little Linford Lane (ML) | 165 - Ousedale School (ML) | 230 - Riverside Meadow (ML) | 262 - Alexandra Drive (ML) |
| 160 - Poets Estate (ML) | 166 - Broad Street (ML) | 231 - Severn Drive (ML) | 263 - Willen Road North (ML) |
| 161 - Lakes Lane (ML) | 167 - Green Park Drive (ML) | 232 - Park Avenue (ML) | 264 - Marsh End Road - HCS (ML) |
| 162 - Newport Pagnell High Street (ML) (LS) | 168 - Gladstone Close (ML) | 233 - Bury Field (ML) | 267 - North Crawley Road (ML) |
| 163 - Tongwell Lane (ML) | 169 - Caldecotte Street (ML) | 25 - H3 Monks Way2 (ML) (RI) | 268 - London Road - HCS (ML) |
| | 170 - Silver Street (ML) | 254 - Bramley Meadows (ML) | 294 - Wolverton Road Newport Pagnell (ML) |
| | 171 - Station Road Newport (ML) | 255 - Willen Road 1 (ML) | 51 - Marsh End Road (ML) (LS) |
| | 172 - Linford Avenue (ML) | 256 - Willen Road 2 (ML) | 78 - V10 Brickhill Street3 (RI) |
| | 195 - Glenwoods (ML) | 257 - Willen Road 3 (ML) | |

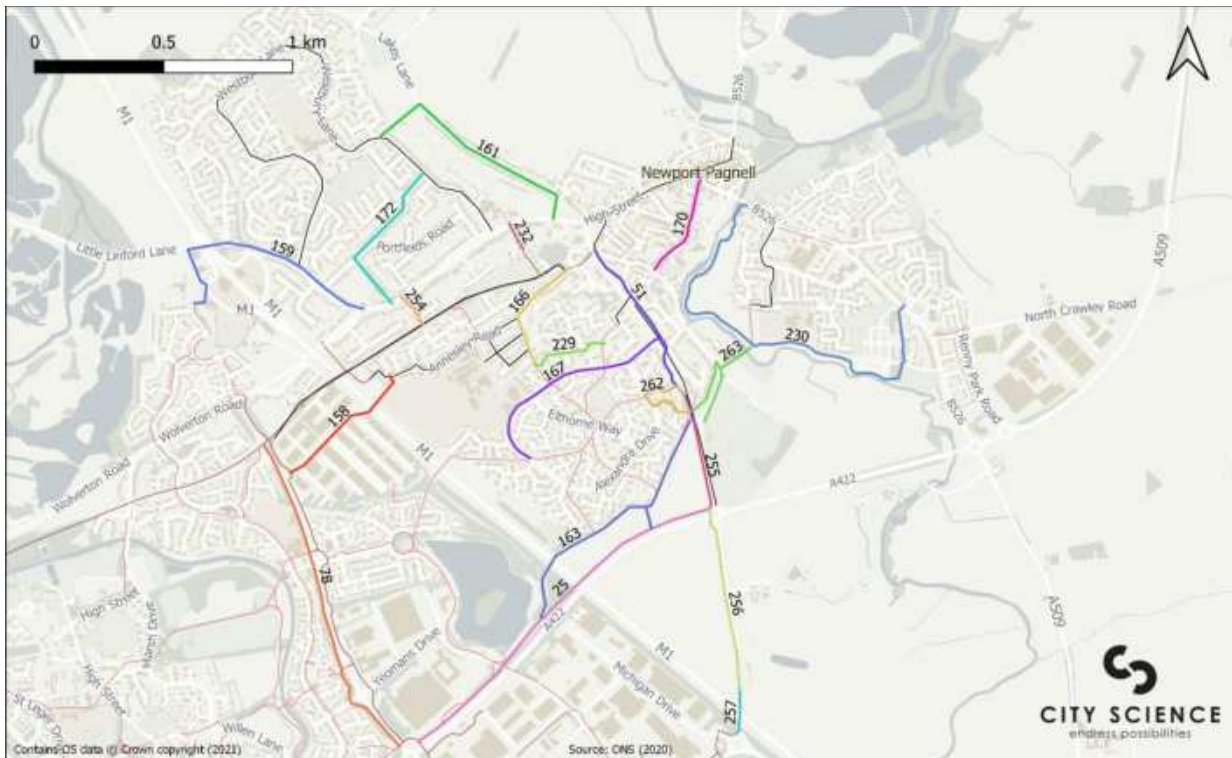
1.4.2 Quick Wins



1.4.3 Short Term



1.4.4 Medium Term



Newport Pagnell: Medium Term

- Super Route
- Redway
- Previous Term LCWIP Schemes

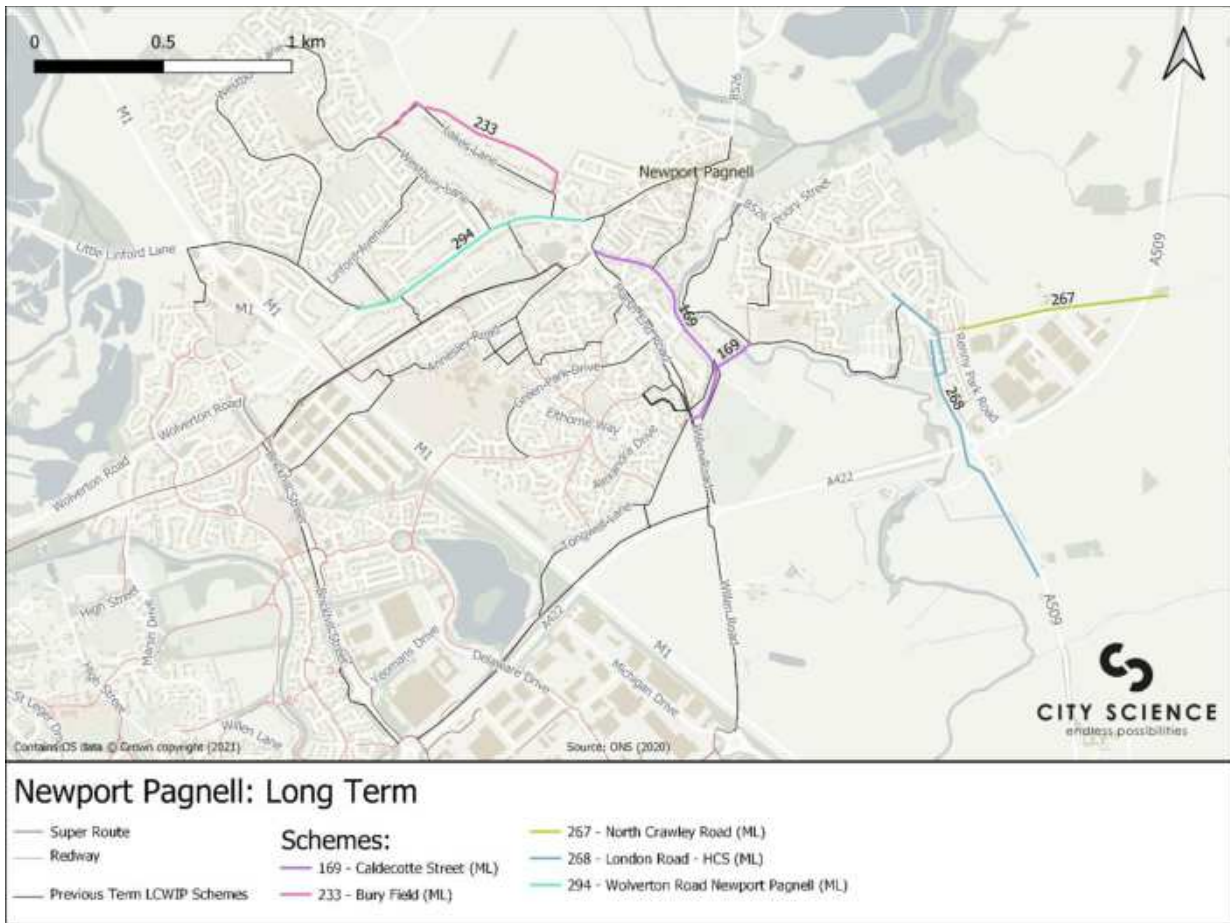
Schemes:

- 158 - Blakelands Estate M1 Crossing (ML)
- 159 - Little Linford Lane (ML)
- 161 - Lakes Lane (ML)
- 163 - Tongwell Lane (ML)
- 166 - Broad Street (ML)
- 167 - Green Park Drive (ML)

- 168 - Gladstone Close (ML)
- 170 - Silver Street (ML)
- 172 - Linford Avenue (ML)
- 229 - Holland Way (ML)
- 230 - Riverside Meadow (ML)
- 232 - Park Avenue (ML)
- 25 - H3 Monks Way2 (ML) (RI)
- 254 - Bramley Meadows (ML)

- 255 - Willen Road 1 (ML)
- 256 - Willen Road 2 (ML)
- 257 - Willen Road 3 (ML)
- 262 - Alexandra Drive (ML)
- 263 - Willen Road North (ML)
- 51 - Marsh End Road (ML) (LS)
- 78 - V10 Brickhill Street3 (RI)

1.4.5 Long Term



1.5.3 Short Term



Olney: Short Term

- Super Route
- Redway
- Previous Term LCWIP Schemes

Schemes:

- 234 - Olney High Street (ML)
- 249 - Yardley Road (ML)

1.5.4 Medium Term



Olney: Medium Term

— Super Route	Schemes:	— 239 - Oxleys (ML)	— 244 - Maybush Walk (ML)
— Redway		— 240 - Aspreys (ML)	— 245 - Weston Road (ML)
— Previous Term LCWIP Schemes	— 235 - Spring Lane (ML)	— 242 - Newton Street (ML)	— 247 - East Street (ML)
	— 237 - Long Lane (ML)	— 243 - Olney Infant to Middle School (ML)	— 248 - Fountain Court (ML)
	— 238 - Dingleberry (ML)	— 250 - Wellingborough Road (ML)	

1.5.5 Long Term



Olney: Long Term

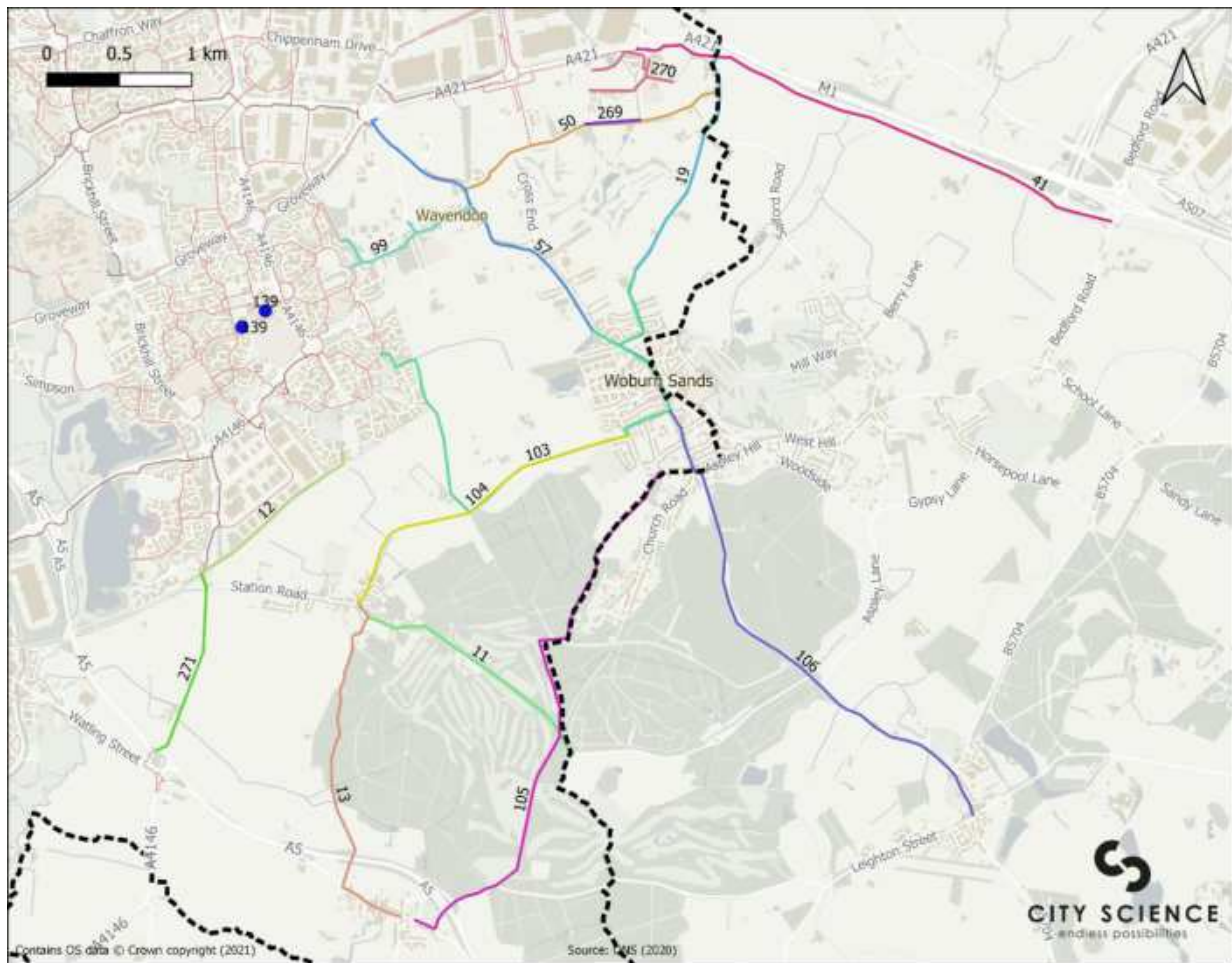
- Super Route
- Redway
- Previous Term LCWIP Schemes

Schemes:

- 236 - West Street (ML)
- 246 - Lime Street (ML)

1.6 Woburn Sands & Wavendon

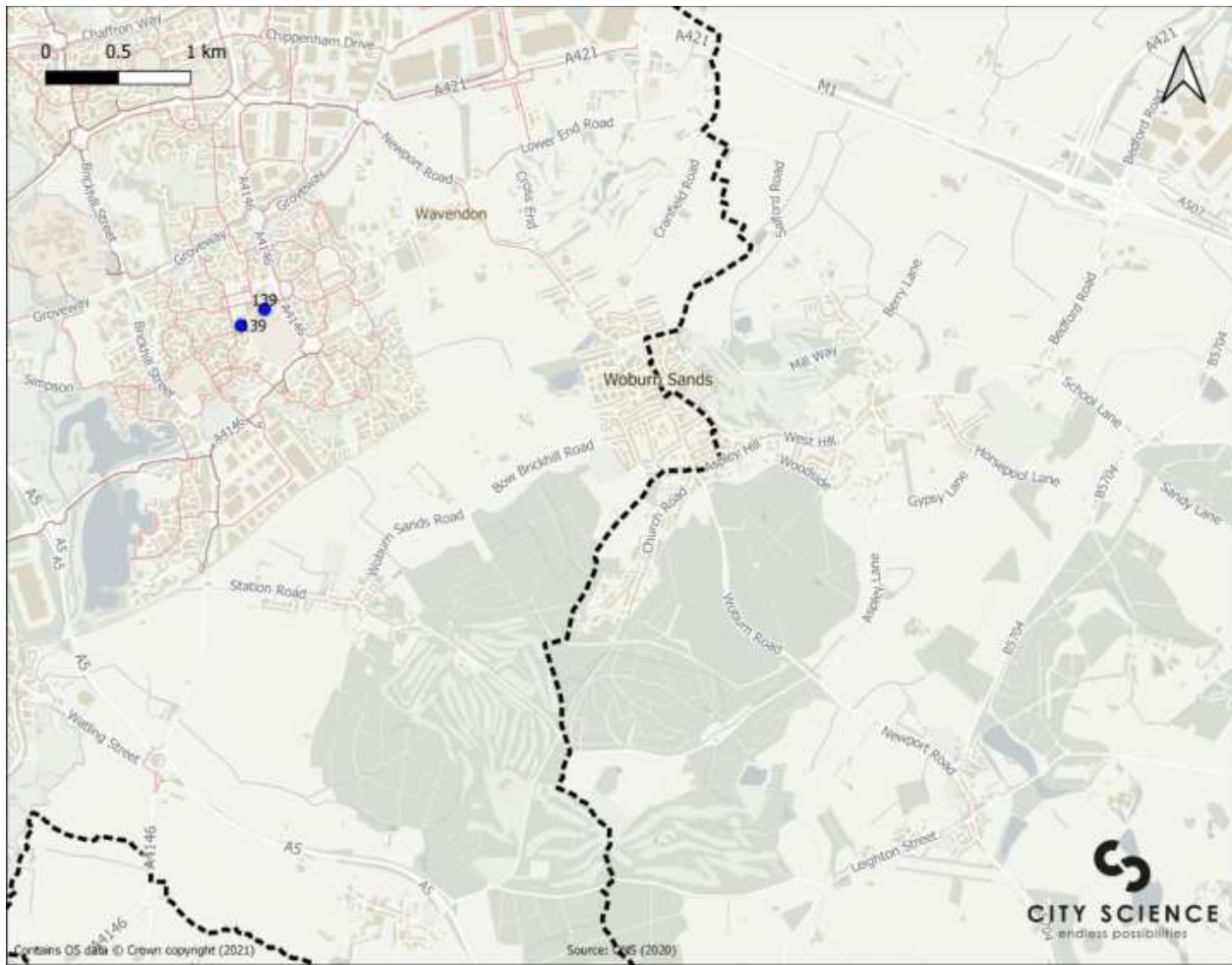
1.6.1 All Schemes



Woburn Sands & Wavendon: All Schemes

— Super Route	Schemes:	— 12 - Bow Brickhill Station (ML) (RI)	— 41 - H8 Standing Way3 (ML)
— Redway	— 103 - Woburn Sands (ML) (LS)	— 13 - Bow Brickhill to Little Brickhill (ML)	— 50 - Lower End Road (ML) (RI) (LS)
	— 104 - Woburn Sands to Bow Brickhill (ML)	— 19 - Cranfield Road (ML) (LS)	— 57 - Newport Road1 (ML) (RI)
	— 105 - Woburn Sands to Little Brickhill (ML)	— 269 - Lower End Road - HCS (ML)	— 99 - Wavendon (ML) (LS)
	— 106 - Woburn Sands to Woburn (ML)	— 270 - Eagle Farm (ML)	● 139 - Walnut Tree (LS)
	— 11 - Bow Brickhill (LS)	— 271 - V10 Brickhill Road (ML)	

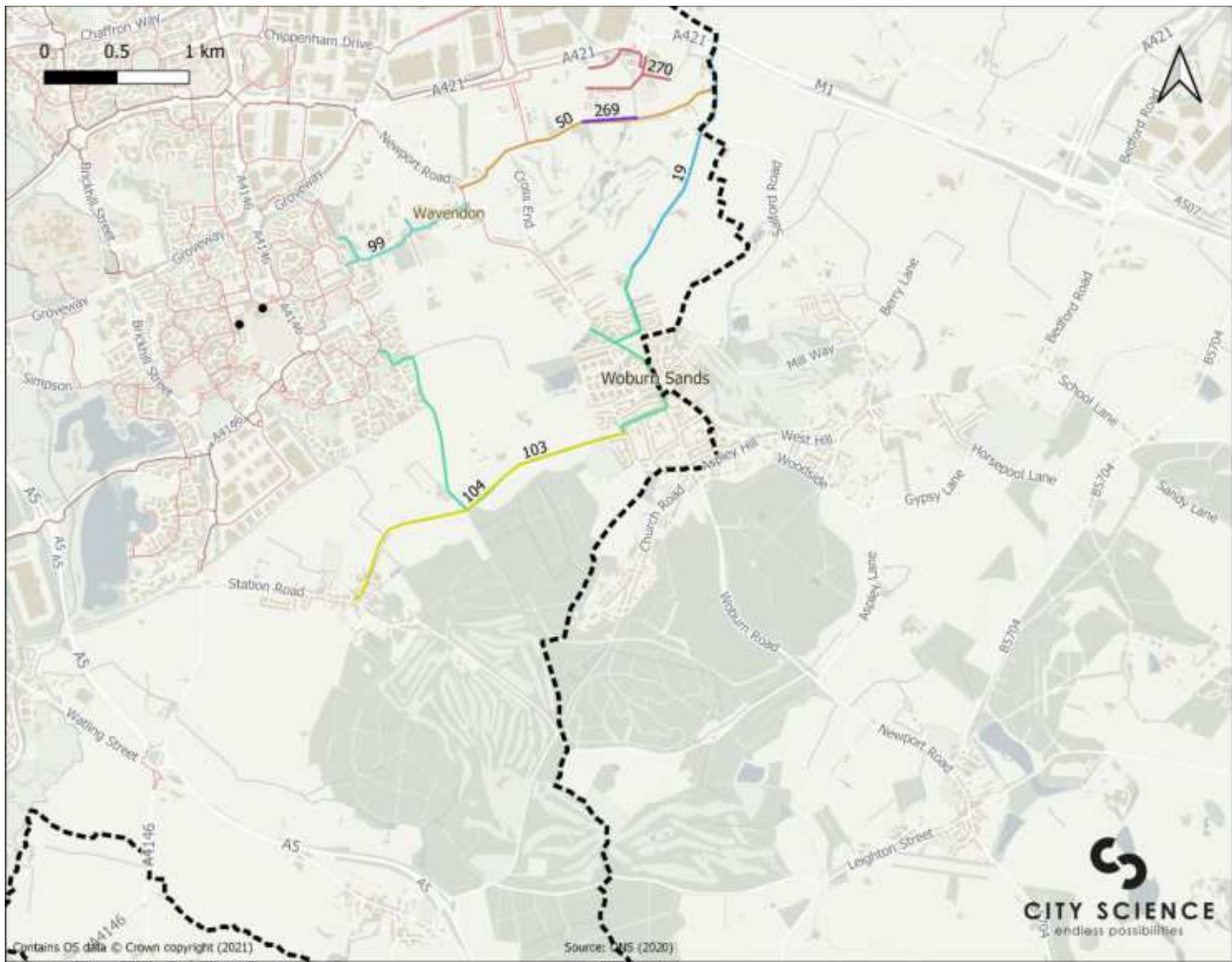
1.6.2 Quick Wins



Woburn Sands & Wavendon: Quick Wins

- Super Route
 - Redway
- Schemes:**
- 139 - Walnut Tree (LS)

1.6.3 Medium Term



Woburn Sands & Wavendon: Medium Term

- Super Route
- Redway
- Previous Term LCWIP Schemes

Schemes:

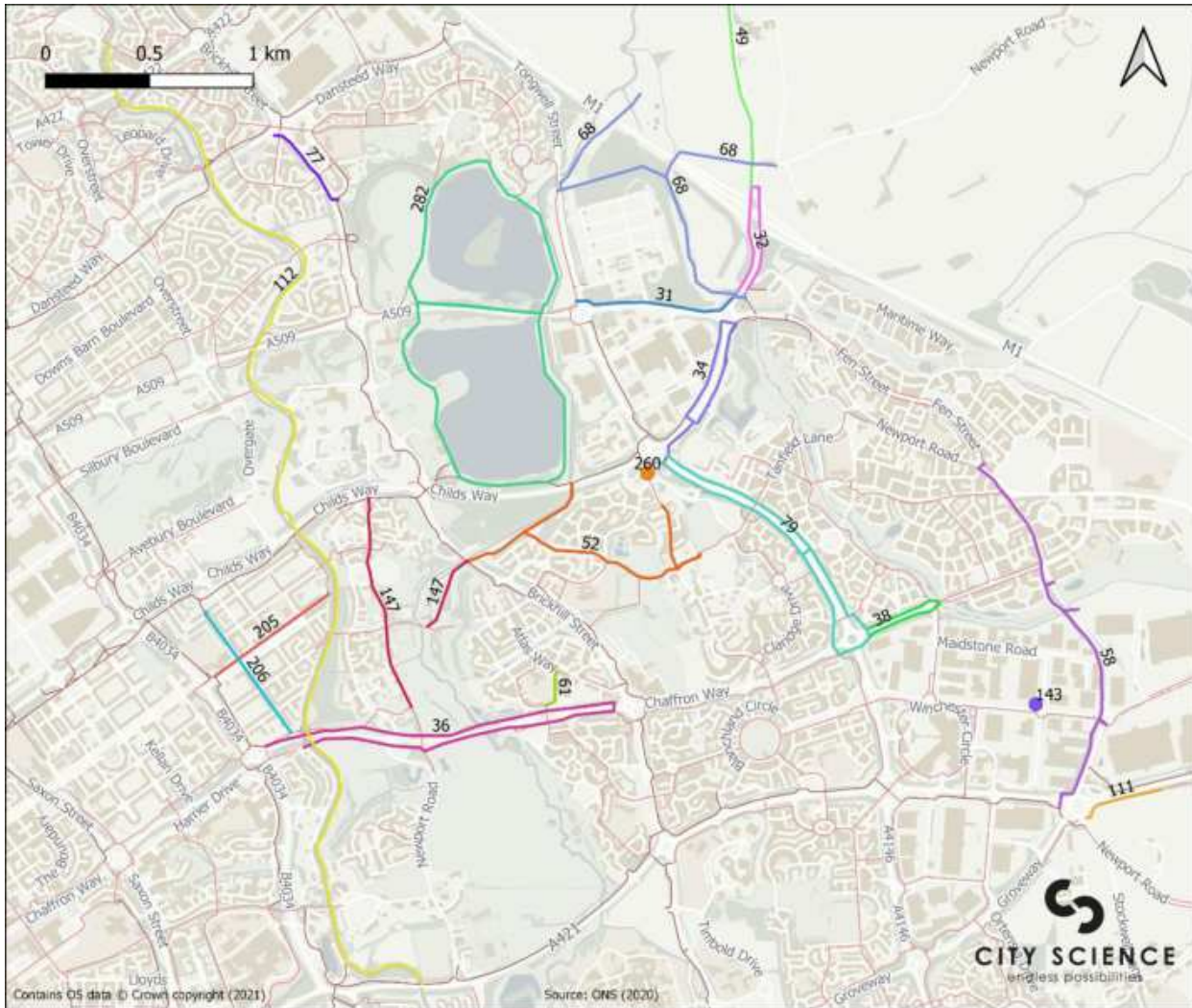
- 103 - Woburn Sands (ML) (LS)
- 104 - Woburn Sands to Bow Brickhill (ML)
- 19 - Cranfield Road (ML) (LS)

- 269 - Lower End Road - HCS (ML)
- 270 - Eagle Farm (ML)
- 50 - Lower End Road (ML) (RI) (LS)
- 99 - Wavendon (ML) (LS)



1.7 Eastern Milton Keynes

1.7.1 All Schemes



East Milton Keynes: All Schemes

- Super Route
- Redway
- Previous Term LCWIP Schemes

Schemes:

- 111 - H8 Standing Way4 (ML) (RI)
- 112 - Canal NCN (RI)
- 147 - Ouzel Valley Park (ML)

- 205 - Springfield EW (ML)
- 206 - Springfield NS (ML)
- 282 - Willen Lake (ML) (RI)
- 31 - H5 Portway4 (ML)
- 32 - H5 Portway5 (ML)
- 34 - H6 Childs Way2 (ML) (RI)
- 36 - H7 Chaffron Way2 (ML) (RI)
- 38 - H7 Chaffron Way4 (ML)
- 49 - London Road (ML)

- 52 - Milton Keynes Village (ML) (RI)
- 58 - Newport Road2 (ML) (RI) (LS)
- 61 - Oakgrove (ML)
- 68 - Pineham (ML)
- 77 - V10 Brickhill Street2 (ML) (RI)
- 79 - V11 Tongwell Street1 (RI)
- 143 - Kingston Cycle Parking (LS)
- 260 - Broughton Fire Station (RI)

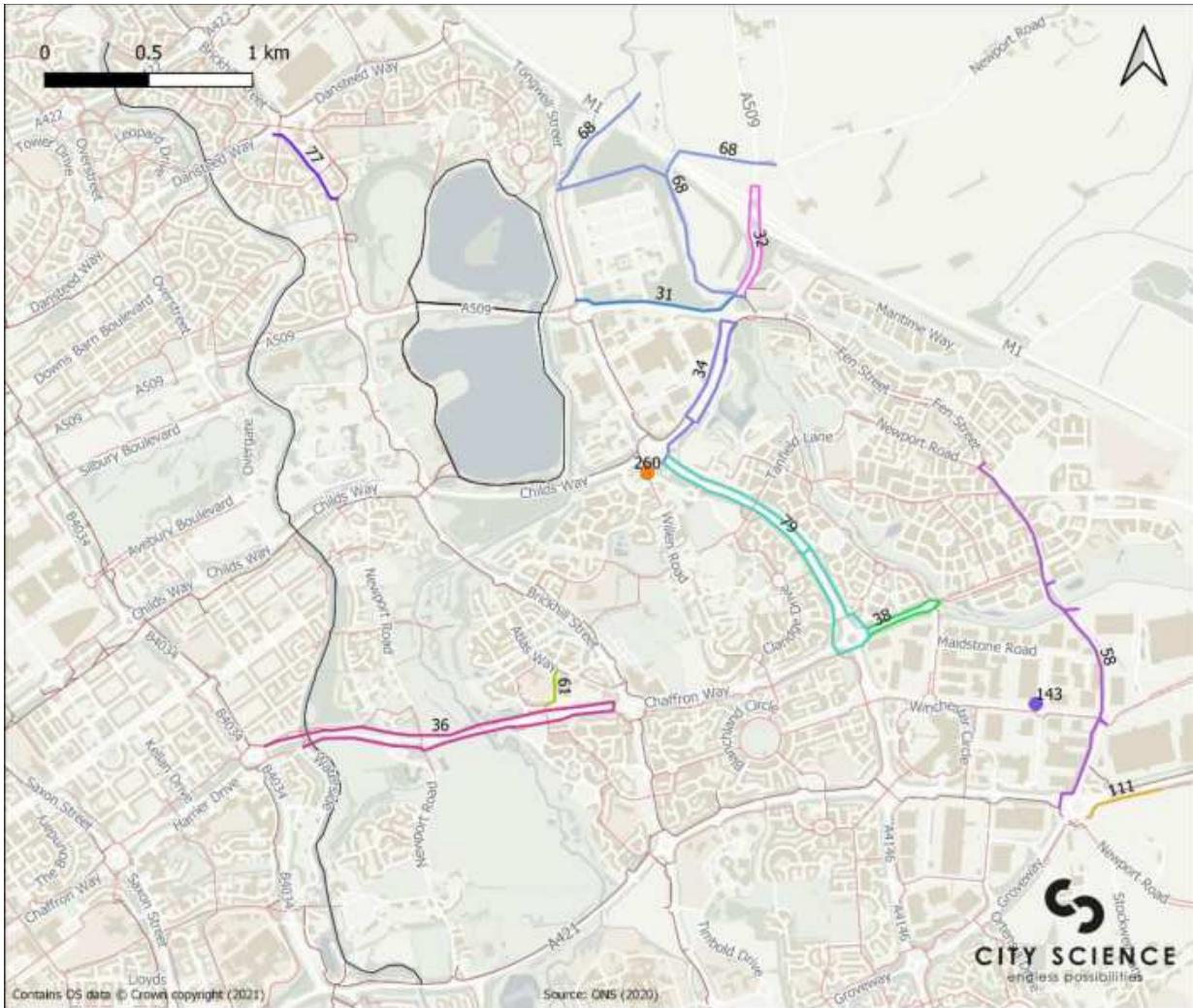
1.7.2 Short Term



East Milton Keynes: Short Term

- | | |
|-------------------------------|-------------------------------|
| — Super Route | Schemes: |
| — Redway | — 112 - Canal NCN (RI) |
| — Previous Term LCWIP Schemes | — 282 - Willen Lake (ML) (RI) |

1.7.3 Medium Term



East Milton Keynes: Medium Term

- Super Route
- Redway
- Previous Term LCWIP Schemes

Schemes:

- 111 - H8 Standing Way4 (ML) (RI)
- 31 - H5 Portway4 (ML)
- 32 - H5 Portway5 (ML)
- 34 - H6 Chids Way2 (ML) (RI)
- 36 - H7 Chaffron Way2 (ML) (RI)
- 38 - H7 Chaffron Way4 (ML)

- 58 - Newport Road2 (ML) (RI) (LS)
- 61 - Oakgrove (ML)
- 68 - Pineham (ML)
- 77 - V10 Brickhill Street2 (ML) (RI)
- 79 - V11 Tongwell Street1 (RI)
- 143 - Kingston Cycle Parking (LS)
- 260 - Broughton Fire Station (RI)

1.7.4 Long Term



East Milton Keynes: Long Term

- Super Route
- Redway
- Previous Term LCWIP Schemes

Schemes:

- 147 - Ouzel Valley Park (ML)
- 205 - Springfield EW (ML)

- 206 - Springfield NS (ML)
- 49 - London Road (ML)
- 52 - Milton Keynes Village (ML) (RI)

1.8 Western Milton Keynes

1.8.1 All Schemes



West Milton Keynes: All Schemes

- Super Route
 - Redway
- | | | |
|--|---|---|
| <p>Schemes:</p> <ul style="list-style-type: none"> 100 - West MK (ML) (LS) 149 - Bleak Hall (ML) 153 - Loughton (ML) 154 - Knowhill Railway Crossing (ML) | <ul style="list-style-type: none"> 278 - Calverton Lane (ML) 279 - V4 Watling Street2 (ML) 28 - H5 Portway1 (ML) 35 - H7 Chaffron Way1 (ML) (RI) 39 - H8 Standing Way1 (ML) (RI) 69 - Railway (ML) 82 - V3 Fulmer Street1 (ML) | <ul style="list-style-type: none"> 83 - V3 Fulmer Street2 (ML) (RI) 84 - V3 Fulmer Street3 (ML) 85 - V3 Fulmer Street4 (ML) (RI) 86 - V4 Watling Street1 (ML) (RI) 136 - MKC Access (ML) (LS) (RI) 27 - H4 Danstead Way1 (RI) |
|--|---|---|

1.8.2 Quick Wins



West Milton Keynes: Quick Wins

- Super Route
 - Redway
- Schemes:**
- 279 - V4 Watling Street2 (ML)

1.8.3 Short Term



West Milton Keynes: Short Term

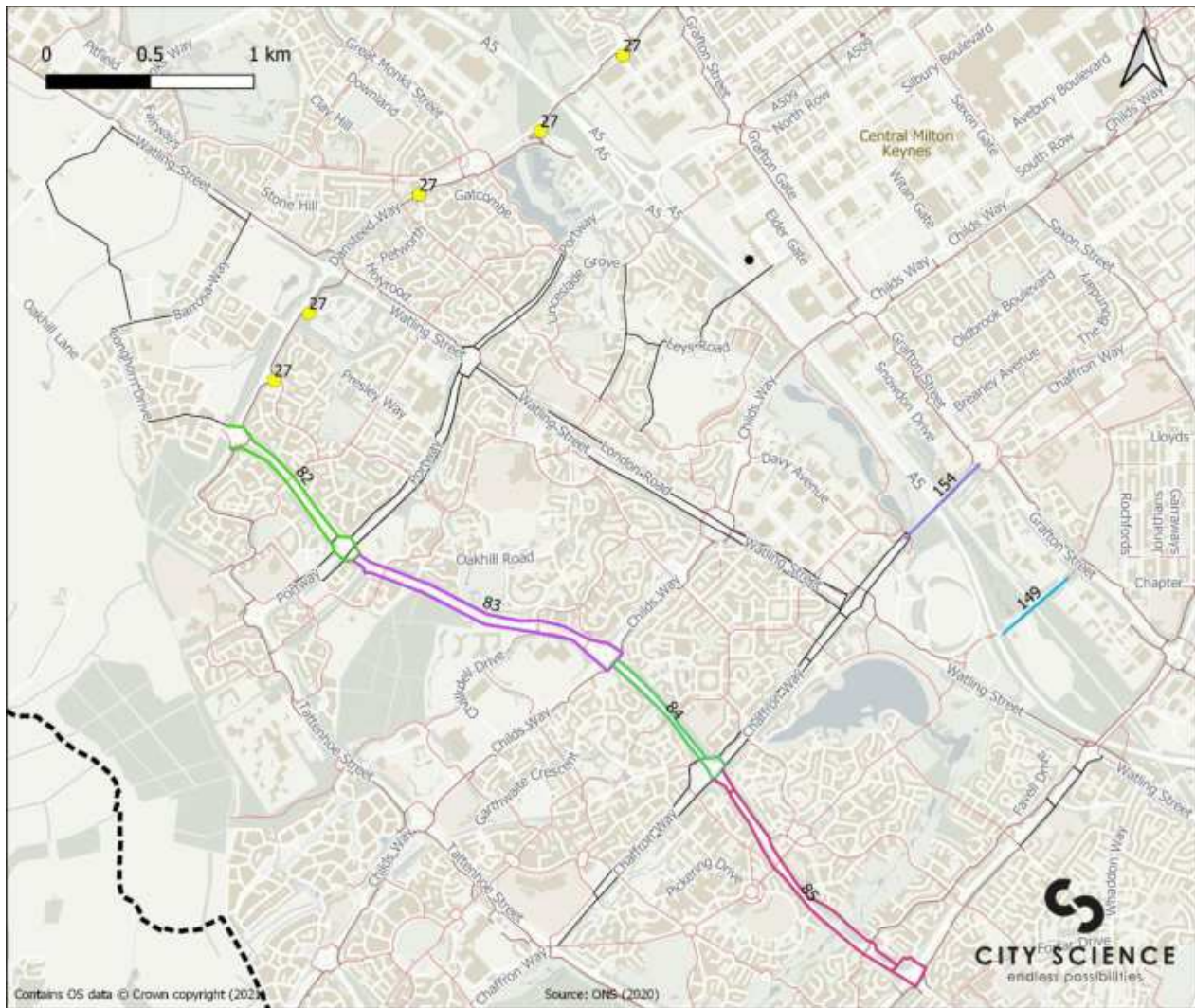
- Super Route
- Redway
- Previous Term LCWIP Schemes

Schemes:

- 100 - West MK (ML) (LS)
- 153 - Loughton (ML)
- 278 - Calverton Lane (ML)

- 28 - H5 Portway1 (ML)
- 35 - H7 Chaffron Way1 (ML) (RI)
- 39 - H8 Standing Way1 (ML) (RI)
- 86 - V4 Watling Street1 (ML) (RI)
- 136 - MKC Access (ML) (LS) (RI)

1.8.4 Medium Term



West Milton Keynes: Medium Term

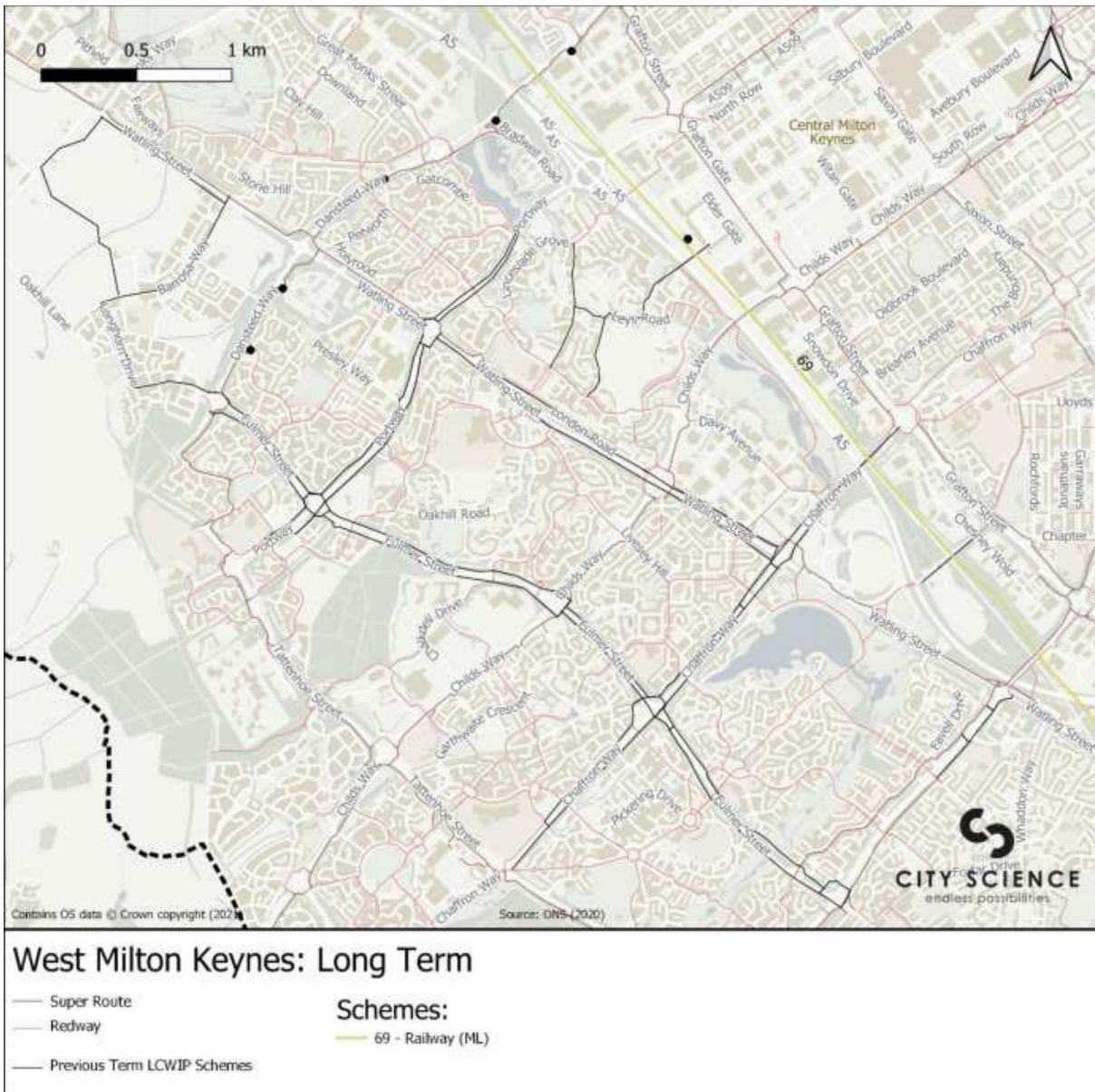
- Super Route
- Redway
- Previous Term LCWIP Schemes

Schemes:

- 149 - Bleak Hall (ML)
- 154 - Knowhill Railway Crossing (ML)
- 82 - V3 Fulmer Street1 (ML)

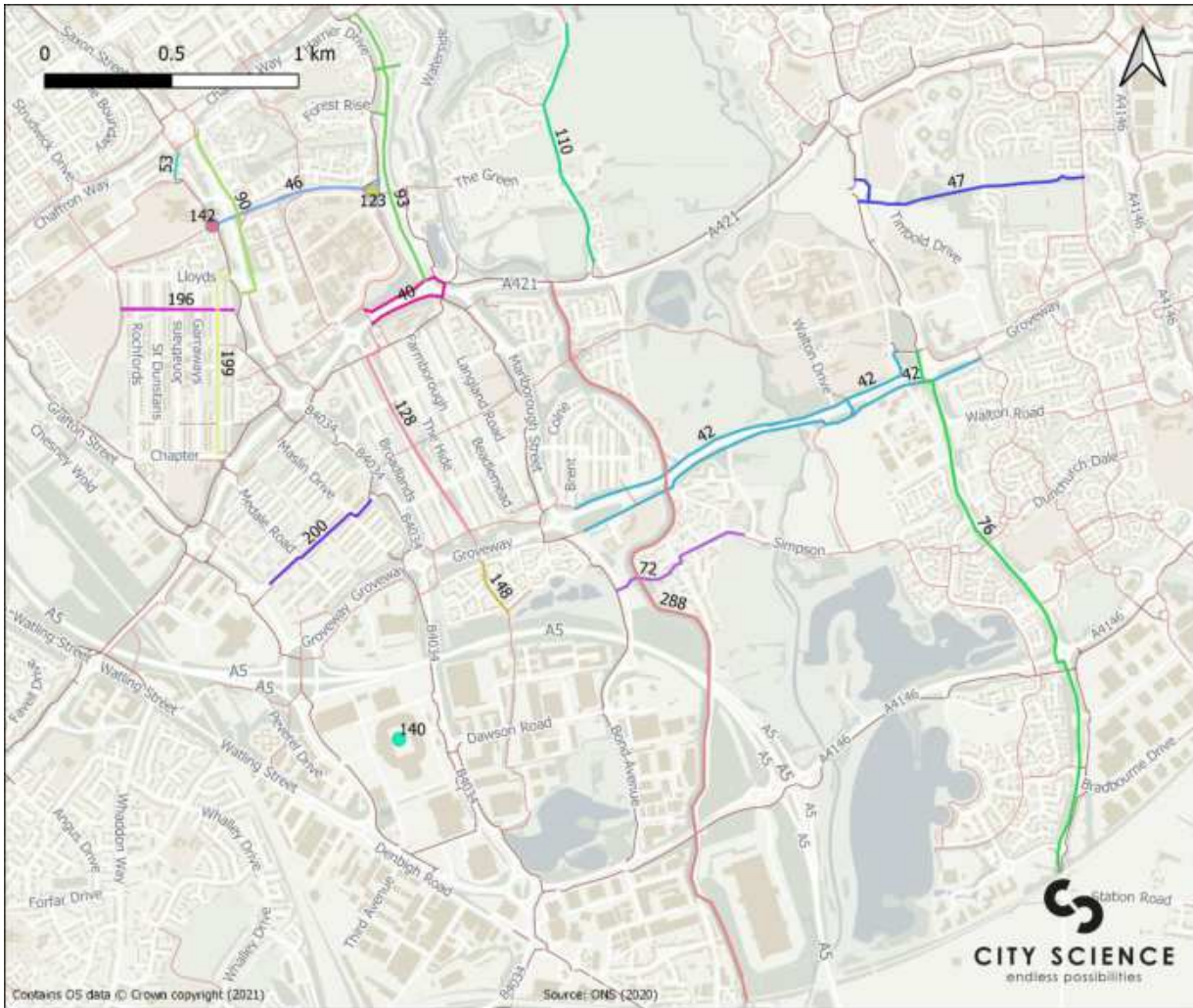
- 83 - V3 Fulmer Street2 (ML) (RI)
- 84 - V3 Fulmer Street3 (ML)
- 85 - V3 Fulmer Street4 (ML) (RI)
- 27 - H4 Dansteed Way1 (RI)

1.8.5 Long Term



1.9 Southern Milton Keynes

1.9.1 All Schemes



South Milton Keynes: All Schemes

- | | | | |
|------------------------------------|-----------------------------------|-----------------------------------|---|
| — Super Route | — 148 - Ashland (ML) | — 42 - H9 Groveway1 (ML) (RI) | — 90 - V7 Saxon Street1 (ML) (RI) |
| — Redway | — 196 - Coffee Hall EW1 (ML) (RI) | — 46 - Hospital (RI) | — 93 - V8 Marlborough Street1 (ML) (RI) |
| | — 199 - Coffee Hall NS1 (ML) (LS) | — 47 - Kents Hill (ML) (RI) | ● 123 - Hospital Junction (RI) |
| Schemes: | — 200 - Beanhill (ML) (LS) | — 53 - MK Academy (RI) | ● 140 - Stadium (ML) (LS) |
| — 110 - Woughton on the Green (ML) | — 288 - Canal H8 to Railway (RI) | — 72 - Simpson (ML) | ● 142 - MK Academy Junction (RI) |
| — 128 - Netherfield (ML) | — 40 - H8 Standing Way2 (ML) (RI) | — 76 - V10 Brickhill Street1 (ML) | |

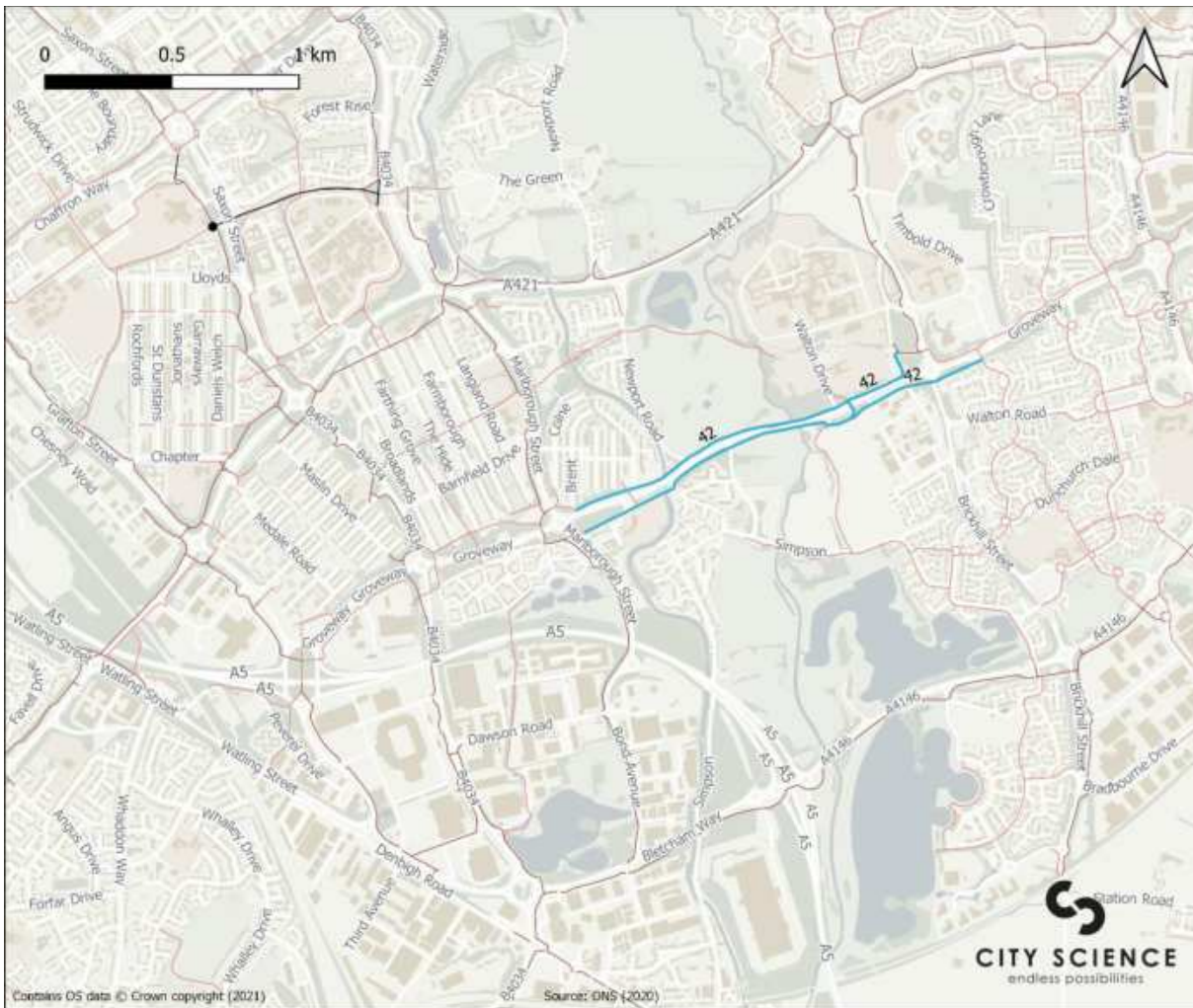
1.9.2 Quick Wins



South Milton Keynes: Quick Wins

- Super Route
 - Redway
- Schemes:**
- 46 - Hospital (RI)
 - 53 - MK Academy (RI)
 - 142 - MK Academy Junction (RI)

1.9.3 Short Term



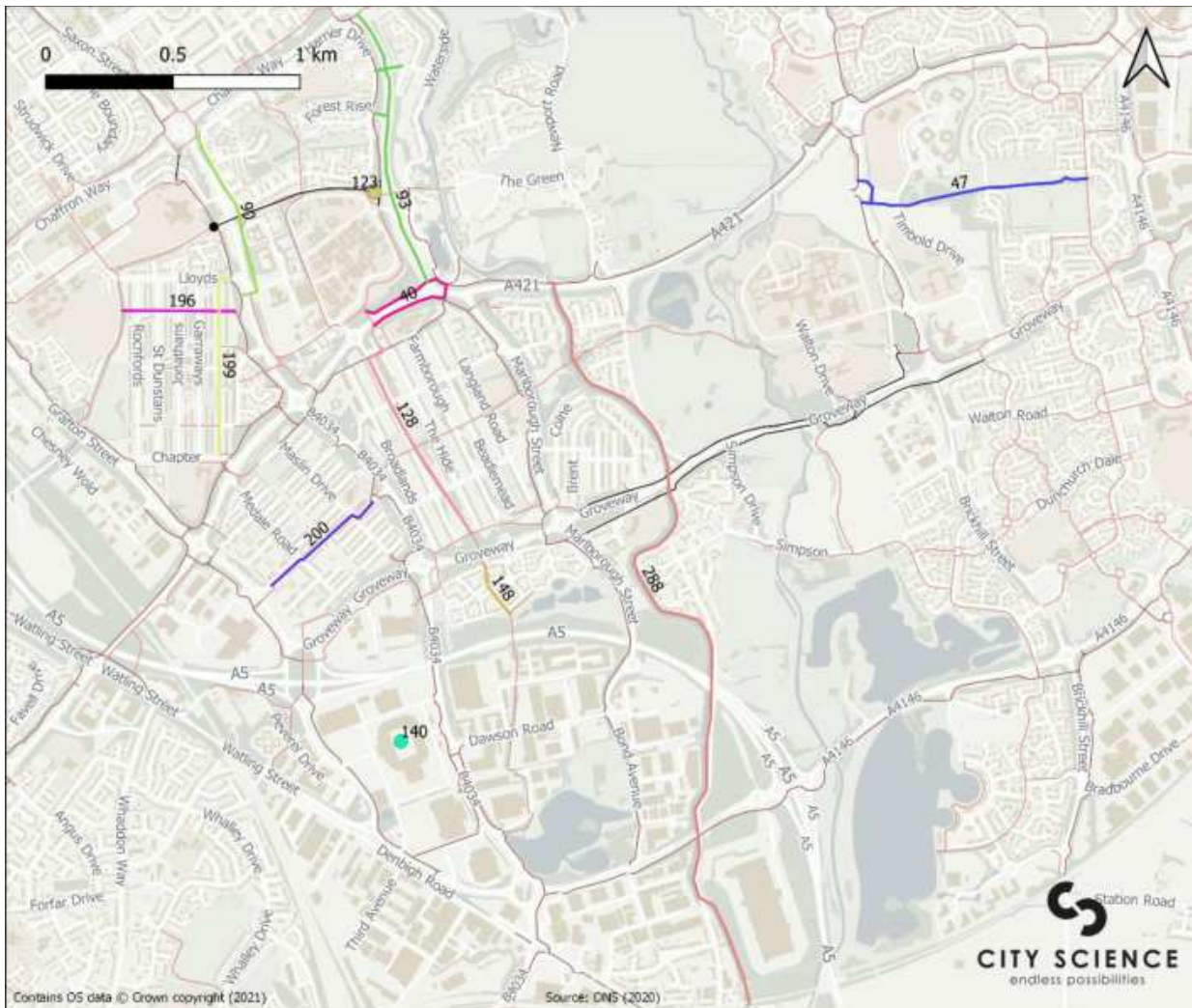
South Milton Keynes: Short Term

- Super Route
- Redway
- Previous Term LCWIP Schemes

Schemes:

- 42 - H9 Groveway1 (ML) (RI)

1.9.4 Medium Term



South Milton Keynes: Medium Term

— Super Route	Schemes:	199 - Coffee Hall NS1 (ML) (LS)	47 - Kents Hill (ML) (RI)
— Redway	128 - Netherfield (ML)	200 - Beanhill (ML) (LS)	90 - V7 Saxon Street1 (ML) (RI)
— Previous Term LCWIP Schemes	148 - Ashland (ML)	288 - Canal H8 to Railway (RI)	93 - V8 Marlborough Street1 (ML) (RI)
	196 - Coffee Hall EW1 (ML) (RI)	40 - H8 Standing Way2 (ML) (RI)	123 - Hospital junction (RI)
			140 - Stadium (ML) (LS)

1.9.5 Long Term



South Milton Keynes: Long Term

- Super Route
- Redway
- Previous Term LCWIP Schemes

Schemes:

- 110 - Woughton on the Green (ML)
- 72 - Simpson (ML)
- 76 - V10 Brickhill Street1 (ML)

1.10 Northern Milton Keynes

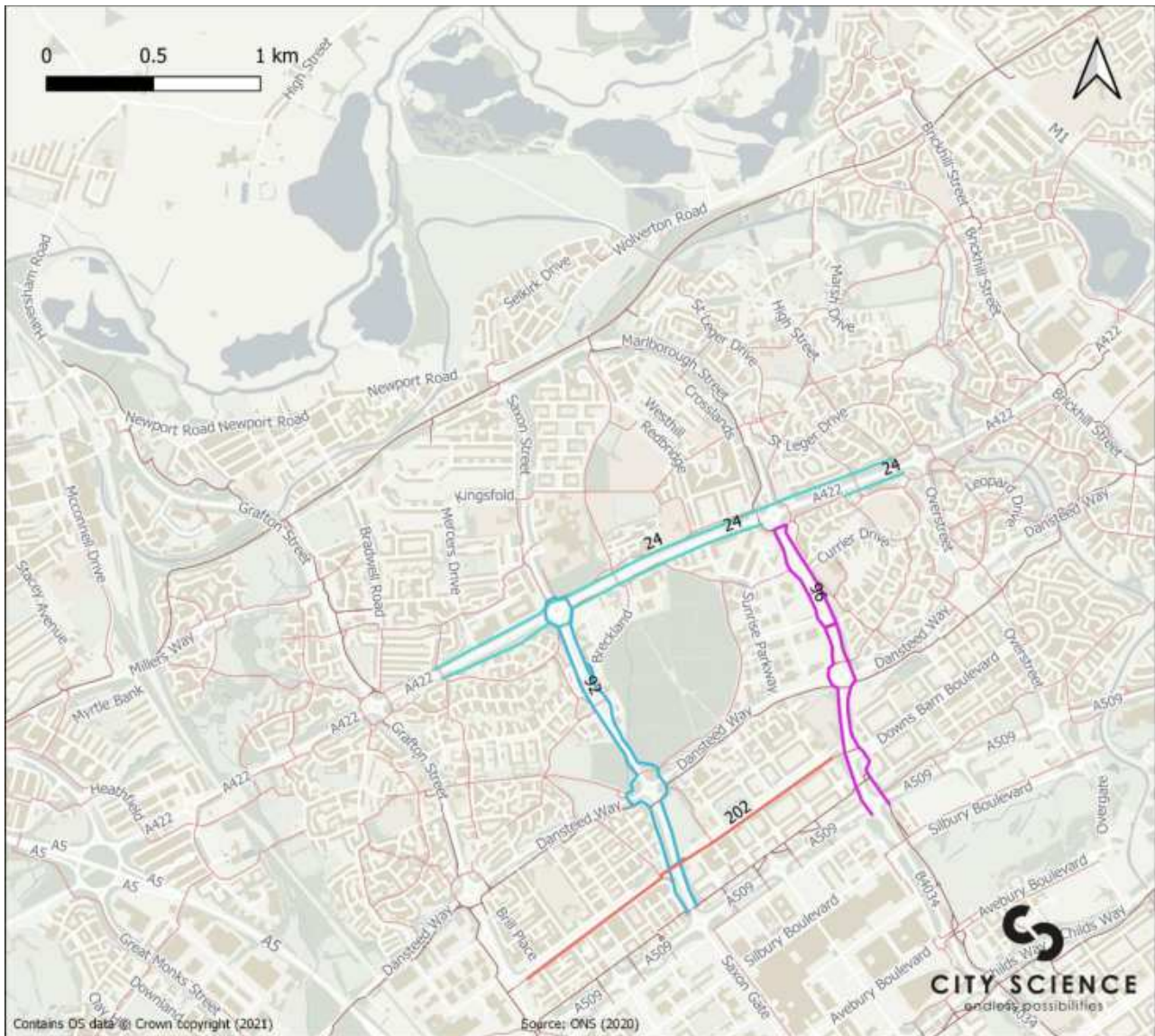
1.10.1 All Schemes



North Milton Keynes: All Schemes

- Super Route
 - Redway
- Schemes:**
- 109 - Wolverton Road (ML) (RI)
 - 150 - Crispin Road (ML)
 - 151 - Conniburrow (ML)
 - 152 - Bradwell Common (ML)
 - 201 - Conniburrow Redway Gap (ML)
 - 202 - Bradwell Common - Conniburrow (ML)
 - 203 - Downs Barn NS (ML)
 - 204 - Downs Barn EW (ML)
 - 207 - Heelands (ML)
 - 208 - Stantonbury (ML)
 - 23 - Great Linford Park (RI)
 - 24 - H3 Monks Way1 (ML) (RI)
 - 285 - Canal Wolverton to Newport Road (RI)
 - 286 - Canal Oakridge Park (RI)
 - 287 - Canal Great Linford Park (RI)
 - 290 - Newport Road (ML) (RI)
 - 291 - V7 Saxon Street5 (ML) (RI)
 - 295 - Stonepit Field Links (ML) (RT)
 - 30 - H5 Portway3 (ML) (RI)
 - 70 - Rooksley (ML) (LS)
 - 71 - Rural Leisure (ML)
 - 87 - V6 Grafton Street1 (ML) (RI)
 - 88 - V6 Grafton Street2 (ML) (RI)
 - 92 - V7 Saxon Street4 (ML) (RI)
 - 96 - V8 Marlborough Street4 (RI)
 - 97 - V9 Overgate1 (ML)
 - 141 - Heelands Junction (RI)

1.10.2 Short Term



North Milton Keynes: Short Term

- Super Route
- Redway

Schemes:

— 202 - Bradwell Common - Conniburrow (ML)

— 24 - H3 Monks Way1 (ML) (RI)

— 92 - V7 Saxon Street4 (ML) (RI)

— 96 - V8 Marlborough Street4 (RI)

1.10.3 Medium Term



North Milton Keynes: Medium Term

- Super Route
- Redway
- Previous Term LCWIP Schemes

Schemes:

- 150 - Crispin Road (ML)
- 151 - Conniburrow (ML)
- 152 - Bradwell Common (ML)
- 203 - Downs Barn NS (ML)
- 204 - Downs Barn EW (ML)
- 207 - Heelands (ML)
- 208 - Stantonbury (ML)
- 285 - Canal Wolverton to Newport Road (RI)
- 286 - Canal Oakridge Park (RI)
- 287 - Canal Great Linford Park (RI)
- 291 - V7 Saxon Street5 (ML) (RI)
- 30 - H5 Portway3 (ML) (RI)
- 70 - Rooksley (ML) (LS)
- 71 - Rural Leisure (ML)
- 87 - V6 Grafton Street1 (ML) (RI)
- 141 - Heelands Junction (RI)



1.10.4 Long Term



North Milton Keynes: Long Term

— Super Route

— Redway

— Previous Term LCWIP Schemes

Schemes:

— 109 - Wolverton Road (ML) (RI)

— 23 - Great Linford Park (RI)

— 290 - Newport Road (ML) (RI)

— 295 - Stonepit Field Links (ML) (RI)

— 71 - Rural Leisure (ML)

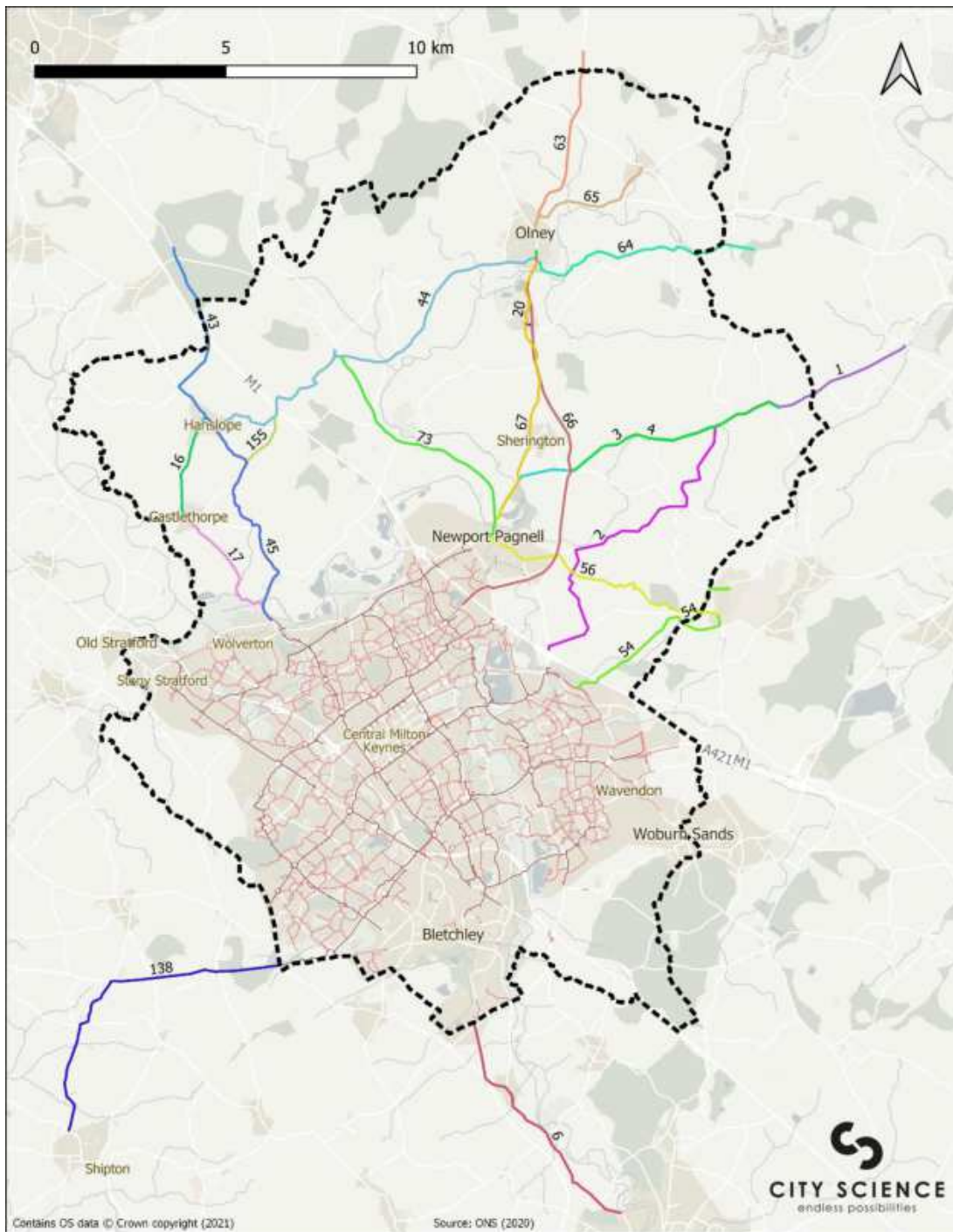
— 88 - V6 Grafton Street2 (ML) (RI)

— 97 - V9 Overgate1 (ML)

CITY SCIENCE
endless possibilities

1.11 Rural Schemes

1.11.1 All Schemes



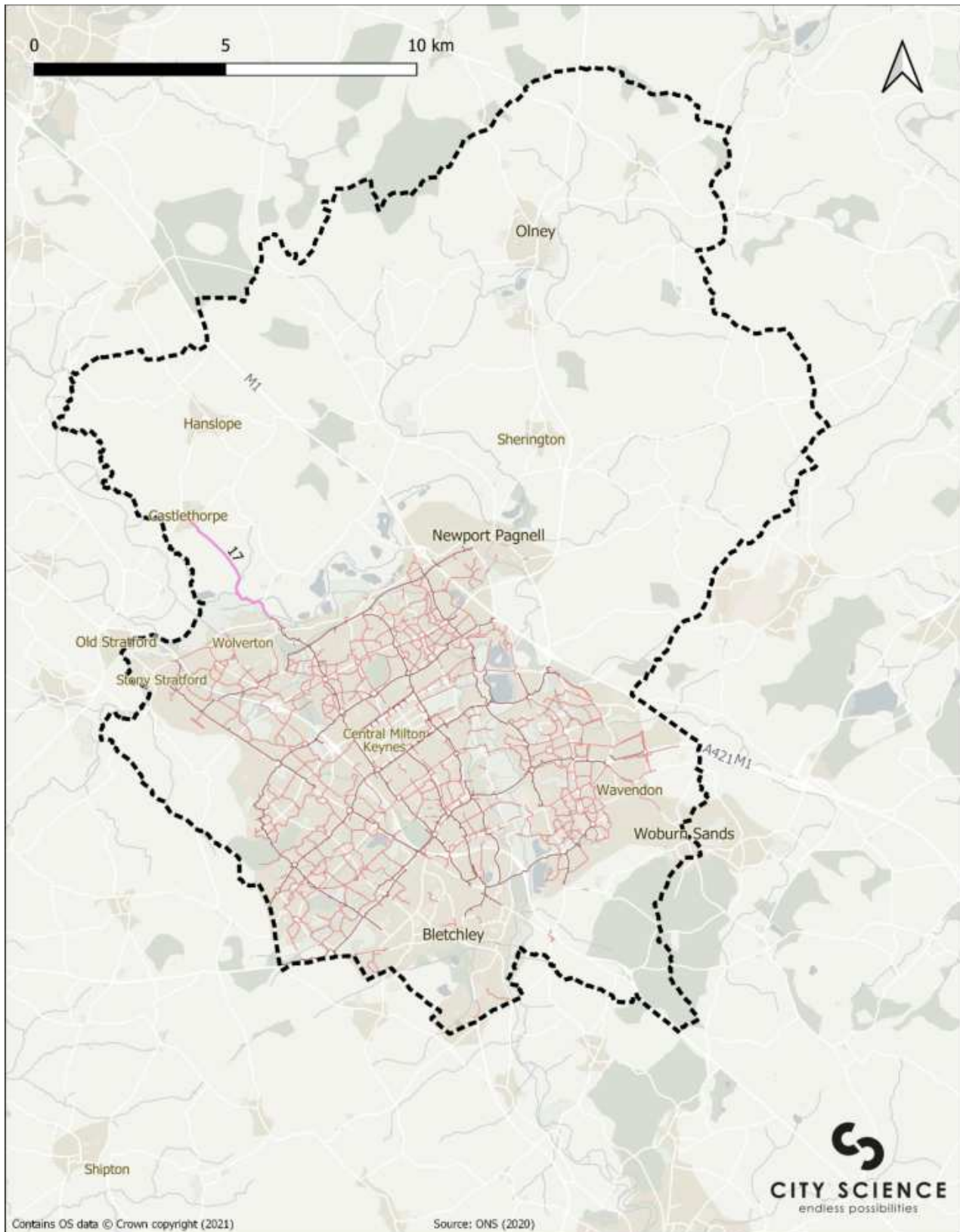
Rural: All Schemes

- Super Route
- Redway

Schemes:

- | | | |
|-------------------------------------|-------------------------------------|---|
| 1 - Astwood to Bedford (ML) | 2 - Astwood to MK (ML) | 56 - Newport Pagnell to Cranfield Uni (ML) |
| 138 - Winslow (ML) | 20 - Emberton (LS) | 6 - Bletchley to Leighton Buzzard (ML) |
| 155 - Tathall End (ML) | 3 - Astwood to Newport Pagnell (ML) | 63 - Olney North (ML) |
| 16 - Castlethorpe to Hanslope (ML) | 4 - Astwood to Olney (ML) | 64 - Olney to Bedford (ML) |
| 17 - Castlethorpe to Wolverton (ML) | 43 - Hanslope North (ML) | 65 - Olney to Lavendon (ML) |
| | 44 - Hanslope to Olney (ML) | 66 - Olney to MK (ML) |
| | 45 - Hanslope to Wolverton (ML) | 67 - Olney to Newport Pagnell (ML) |
| | 54 - MK to Cranfield Uni (ML) | 73 - Stoke Goldington to Newport Pagnell (ML) |

1.11.2 Short Term



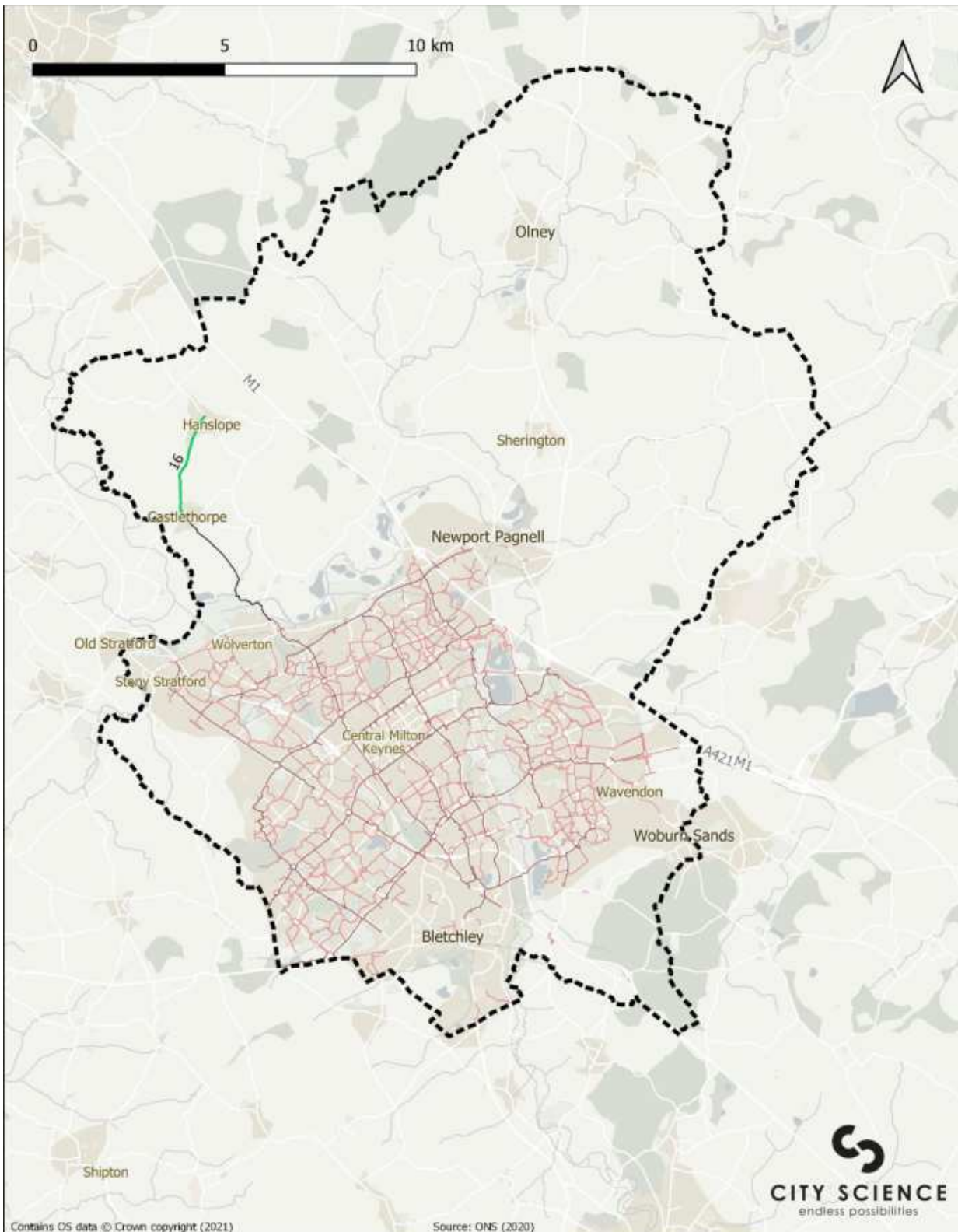
Rural: Short Term

- Super Route
- Redway

Schemes:

- 17 - Castlethorpe to Wolverton (ML)

1.11.3 Medium Term



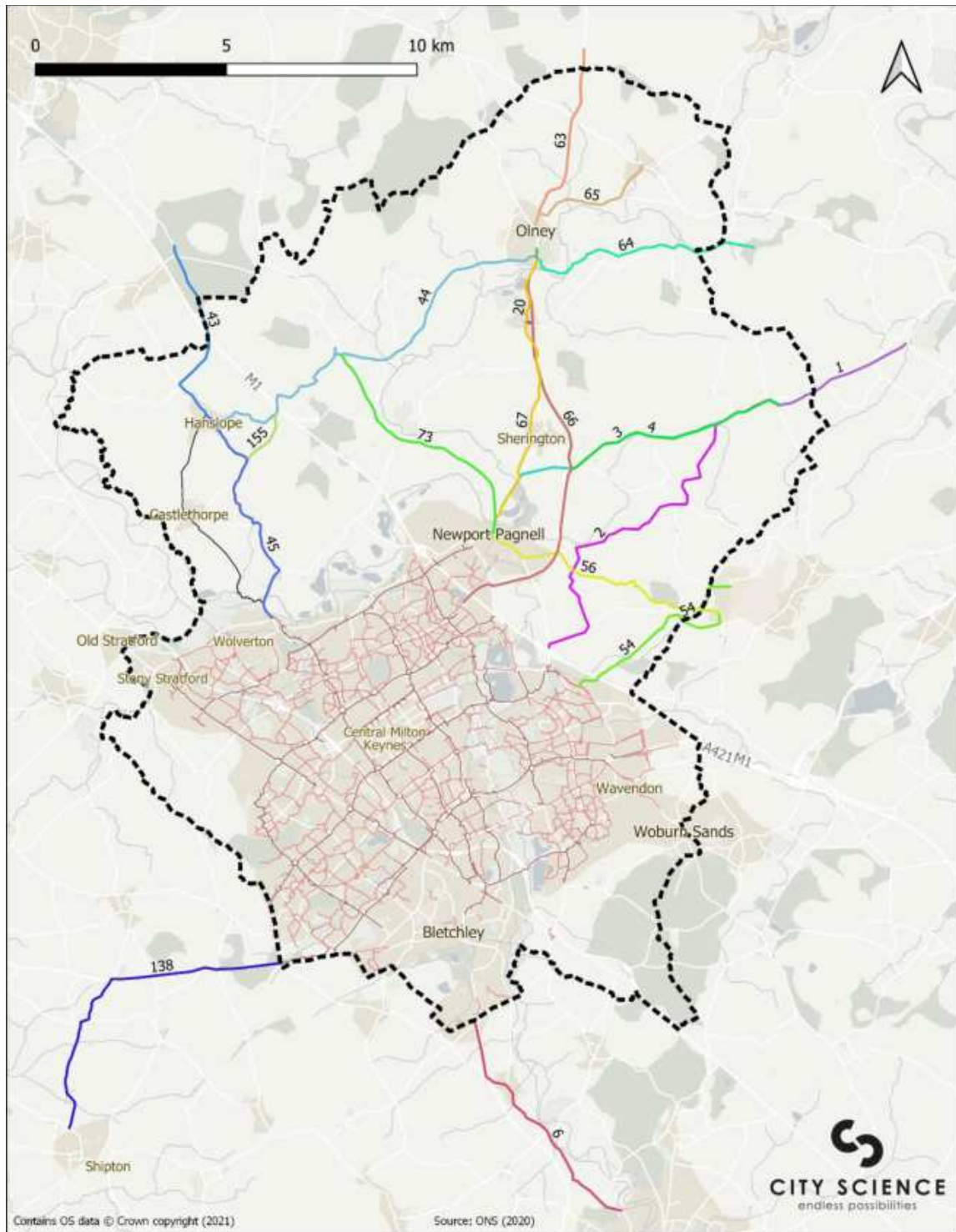
Rural: Medium Term

- Super Route
- Redway
- Previous Term LCWIP Schemes

Schemes:

- 16 - Castlethorpe to Hanslope (ML)

1.11.4 Long Term



Rural: Long Term

- Super Route
- Redway
- Previous Term LCWIP Schemes

Schemes:

- | | | |
|-----------------------------|-------------------------------------|--|
| 1 - Astwood to Bedford (ML) | 2 - Astwood to MK (ML) | 56 - Newport Pagnell to Cranfield Uni (ML) |
| 138 - Winslow (ML) | 20 - Emberton (LS) | 6 - Bletchley to Leighton Buzzard (ML) |
| 155 - Tathall End (ML) | 3 - Astwood to Newport Pagnell (ML) | 63 - Olney North (ML) |
| | 4 - Astwood to Olney (ML) | 64 - Olney to Bedford (ML) |
| | 43 - Hanslope North (ML) | 65 - Olney to Lavendon (ML) |
| | 44 - Hanslope to Olney (ML) | 66 - Olney to MK (ML) |
| | 45 - Hanslope to Wolverton (ML) | 67 - Olney to Newport Pagnell (ML) |
| | 54 - MK to Cranfield Uni (ML) | 73 - Stoke Goldinton to Newport Pagnell (ML) |