



# Daisychain Family Centre Programme

Services and support for families  
and the community

Open Monday to Friday from 8.30am

**Areas Daisychain Family Centre covers:**

West Bletchley, Far Bletchley, Granby, Mount Farm, Denbigh North,  
Denbigh West and Brickfields

[www.milton-keynes.gov.uk/childrens-centres](http://www.milton-keynes.gov.uk/childrens-centres)

**01908 641454**

 **Milton Keynes**  
City Council

## Sessions for parents/carers and children

### Monday

<b>Stay and Play</b>	A fun filled session for you and your child to enjoy, with a variety of activities and story and song time.	9.45am - 11.15am
<b>Let's Interact and Play</b>	A fun interactive group to support your child's early communication talking through play. Please speak to a member of staff for more information.	1.30pm - 2.30pm
<b>Storytime Café</b>	This snack time café will be an opportunity to join in with stories, songs and have a snack.	2.30pm - 3.00pm
<b>Table Tennis</b>	Please contact the centre on 01908 641454 if you would like to book our table.	3.15pm - 4.00pm

### Development Reviews

**Mondays, 9.00am - 4.15pm**

Please contact health visitor's hub on 01908 725100 for further information.

### Drop in Breakfast Club

**Monday and Wednesday, 8:45am - 9:45am**

Our breakfast club is a time for you to drop in and have toast and tea and time to play with your children before the centre sessions.

### Personal Finance and Money Budgeting Classes

**Mondays, 1.30pm - 2.30pm**

This session will support you to manage your finances and provide advice on budgeting and managing debt.

## Tuesday

<b>Little Explorers</b>	This under 1's session is perfect for those little feet who love to explore.	9.30am - 10.30am
<b>Little Daisies</b>	<b>Stay and Play</b> for parents under the age of 25. Come and join us for snacks, chat and play opportunities for your children.	10.30am - 12.00pm
<b>Story, Songs and Rhymes</b>	Enjoy this themed story and song time session - to spark a love of books.	2.00pm - 3.00pm
<b>Bumps and Babes</b>	This is a non-walking baby group, for new mums and mums to be.	2.00pm - 3.00pm

### Development Reviews

**Tuesdays, 12:45pm - 4.15pm**

Please contact health visitor's hub on 01908 725100 for further information.

<b>Table Tennis</b>	Please contact the centre on 01908 641454 if you would like to book our table.	3.15pm - 4.00pm
---------------------	--	-----------------

## Wednesday

<b>Drop in Breakfast Club</b>	Our breakfast club is a time for you to drop in and have toast and tea and time to play with your children before school or before the centre sessions.	8.45am - 9.45am
<b>Mucky Pups</b>	This is an exciting session where your babies and children will love getting messy. We advise you bring a change of clothes. £1.00 contribution welcome.	9.45am - 10.45am
<b>Get Ready for School</b>	Get ready for school at Daisychain, this group is to help your children have the best possible start to their school life. Please speak to a member of staff if you would like to attend.	10.00am - 11.30am

## Wednesday - continued

### Midwives – Antenatal Appointments

**Wednesdays, 8.30am - 4.15pm**

These sessions will be pre booked by your midwife.

<b>Soft Play</b>	A fun session for you and your child/ren to enjoy and explore building, climbing, and crawling. <b>Under 4's only.</b>	1.15pm - 2.00pm
<b>Wellbeing Wednesday</b>	Come along to this adult session for a chat with our team, games, arts, crafts and drinks provided. Some well-earned you time.	1.30pm - 3.00pm
<b>Toddler Time</b>	Come and join Annette for a fun filled music session for under 5's.	2.00pm - 2.30pm
<b>Table Tennis</b>	Please contact the centre on 01908 641454 if you would like to book our table.	3.15pm - 4.00pm

## Thursday

<b>Little Boppers</b>	Bring your under 2's for a fun packed session featuring dance, soft play, rhymes and much more.	9.30am - 10.30am
<b>Storytime Cafe</b>	This snack time café will be an opportunity to join in with stories, songs and have a snack.	10.30am - 11.00am

### Midwives – Antenatal Appointments

**Thursdays, 8.30am - 4.15pm**

These sessions will be pre booked by your midwife.

<b>Stay and Play</b>	A fun filled session for you and your child to enjoy, with a variety of activities, the session ends with a story and song time.	1.30pm - 3.00pm
----------------------	--	-----------------

## Thursday - continued

<b>Mindful Crafts</b>	This session is for adults and provides the opportunity to try out some simple art and craft techniques, to help you relax and destress. Please speak to a member of staff for more information.	1.00pm- 3.30pm
<b>Afterschool Storytime Café</b>	This story time café will be an opportunity to relax with some stories, songs and have a snack.	3.30pm - 4.00pm
<b>Table Tennis</b>	Please contact the centre on 01908 641454 if you would like to book our table.	3.15pm - 4.00pm

## Friday

<b>Baby Clinic</b>	An opportunity to drop in, have your babies weighed and speak to the health visiting team.	9.30am - 11.30am
<b>Baby Group</b>	This baby group is for 0-12 months and provides sensory experiences and play experiences with time to meet other parents.	9.30am - 11.30am

### Development Reviews

**Fridays, 9.30am - 11.45am**

Please contact health visitor's hub on 01908 725100 for further information.

<b>Park Trust Walk</b>	This session will involve a walk around the local green areas, with a natural nature activity in the outside environment.	1.00pm - 3.00pm
------------------------	---	-----------------

## Volunteering

Gain some work experience, job opportunities or just help your local community? If so our Children and Family Centres need you! If you have a few hours to spare your local centre has varying roles available, offering accredited volunteer training and enhance your CV.

## Friday - continued

### Washing Hire Drop in Cafe

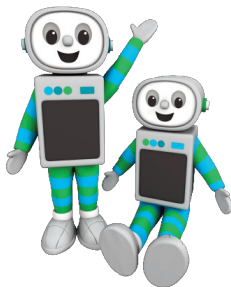
This session is a time to meet other families, have a chat with refreshments. It also provides an opportunity if needed for you to use the centres washing machine whilst at the café. We will need you to book in to use the washing machine.  
(Donation of £1.00 is welcome).

1.00pm - 3.00pm

## Community food trolley

### Monday - Friday

The food trolley is available daily, where you can help yourself to food.



### Healthy Start Vitamins

Healthy Start vitamins coupons can be exchanged at all the centres.

### Time for twos

You are automatically eligible for 15 HOURS FREE early education for your three or four year old

You may also be eligible for 30 hours FREE early education for your three or four year old, as a working parent and 15 hours free childcare for two year olds.

To find out if you are eligible visit: [www.childcarechoices.gov.uk](http://www.childcarechoices.gov.uk)

Or visit your local Children's and Family Centre for more help.

## Data Protection Privacy Statement

We collect and use information about you so that we can provide you with the best services possible. Full details about how we use this data and the rights you have around this can be found at [www.milton-keynes.gov.uk/cafcprivacy](http://www.milton-keynes.gov.uk/cafcprivacy). If you have any data protection queries, please contact the Data Protection Officer at [data.protection@milton-keynes.gov.uk](mailto:data.protection@milton-keynes.gov.uk)

## Information

### Private room hire

Did you know...? That our centres are available for private hire? They are perfect for parties, meetings and wedding receptions. To find out more details for bookings please contact your local centre.

### Parents Courses we offer

- Nurturing Programme
- Incredible babies

### Family Support

Family support available for all households. Please ask for further details from the team.

## Girl Pack

We have free sanitary products - Help us stop period poverty!

## Monthly one-to-one Health and Well-Being Coaching

With specialist staff - Please speak to a member of staff for more information on dates and times.



### MK Together

For more information Safeguarding in MK visit the MK Together website: [www.mktogether.co.uk/](http://www.mktogether.co.uk/)

### Food Bank

*Please speak to a member of staff at your local centre.*



Register with your local Children and Family centre at:  
**[www.milton-keynes.gov.uk/childrens-centres](http://www.milton-keynes.gov.uk/childrens-centres)**



**Daisychain Family Centre**

Melrose Avenue, Bletchley, Milton Keynes MK3 6PS

T: 01908 641454