



Milton Keynes City Council

Tenant & Leaseholder Group

Rents & Service Charge Review Project

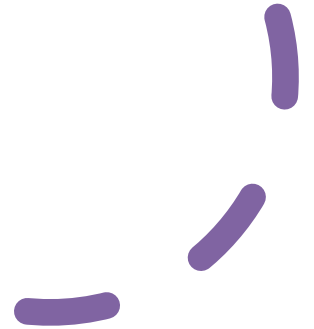


Photo and Questions



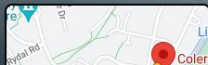
IN THIS PRESENTATION WE WILL SHOW YOU SOME PHOTOGRAPHS TO LOOK AT AND THEN ASK YOU A FEW QUESTIONS/STATEMENTS TO CONSIDER.



WE WILL DISCUSS EVERYONE'S VIEWS AT OUR MEETING ON THE 10 MAY 2023

May 2014

[See more dates](#)



©2014 Google





Blocks

- How many blocks are in these 2 photos?
- Should tenants / leaseholders pay for both accesses?





Communal Access

- I'm a tenant and live on the ground floor. I don't want to pay for any communal stuff as you can see I have my own front door?
- I only use the main door to get to my back garden?













Opening Spaces



- Not maintained from Council Tax. How can we look to collect a service charge which is fair, reasonable and transparent?







Passenger and Stair Lifts

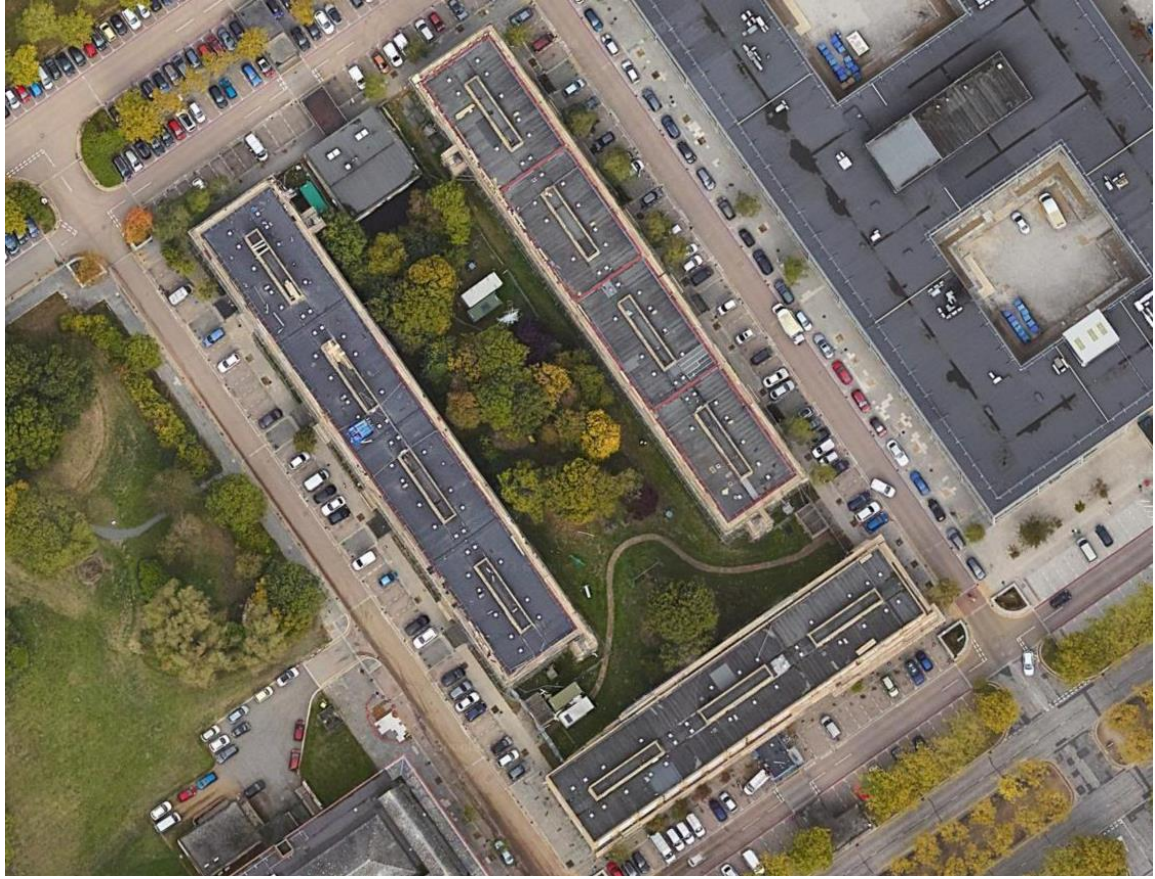
- I live on the ground floor, so I don't think I should pay for the lift?
- I don't use the lift, so I don't think I should pay for it?
- I need my stairlift to be able to live in my home!





2 12

14







Grouping Blocks Together

- Under what circumstances and conditions would you think grouping blocks in close proximity would be acceptable?
- Why?

