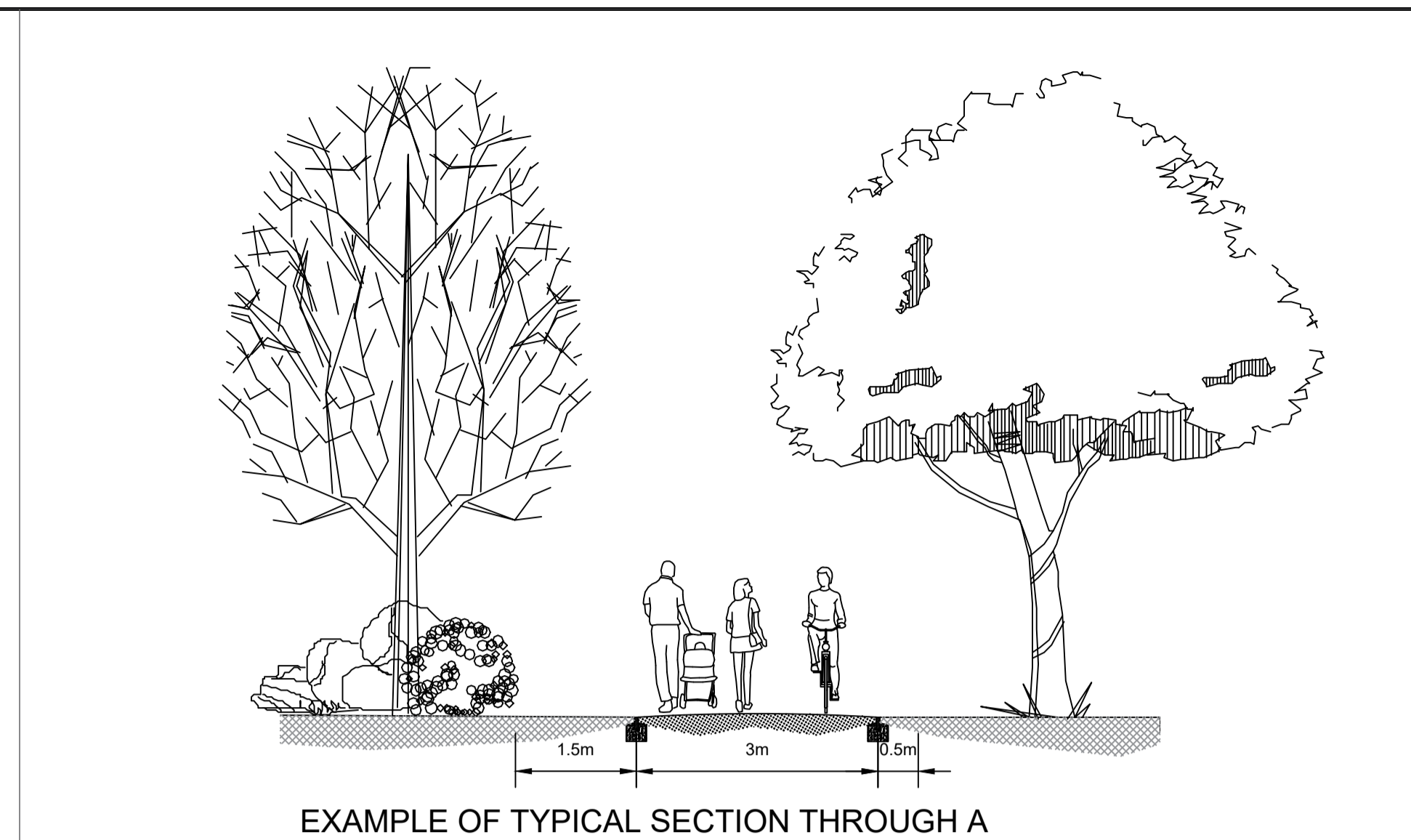
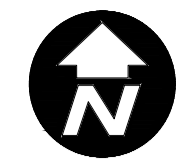
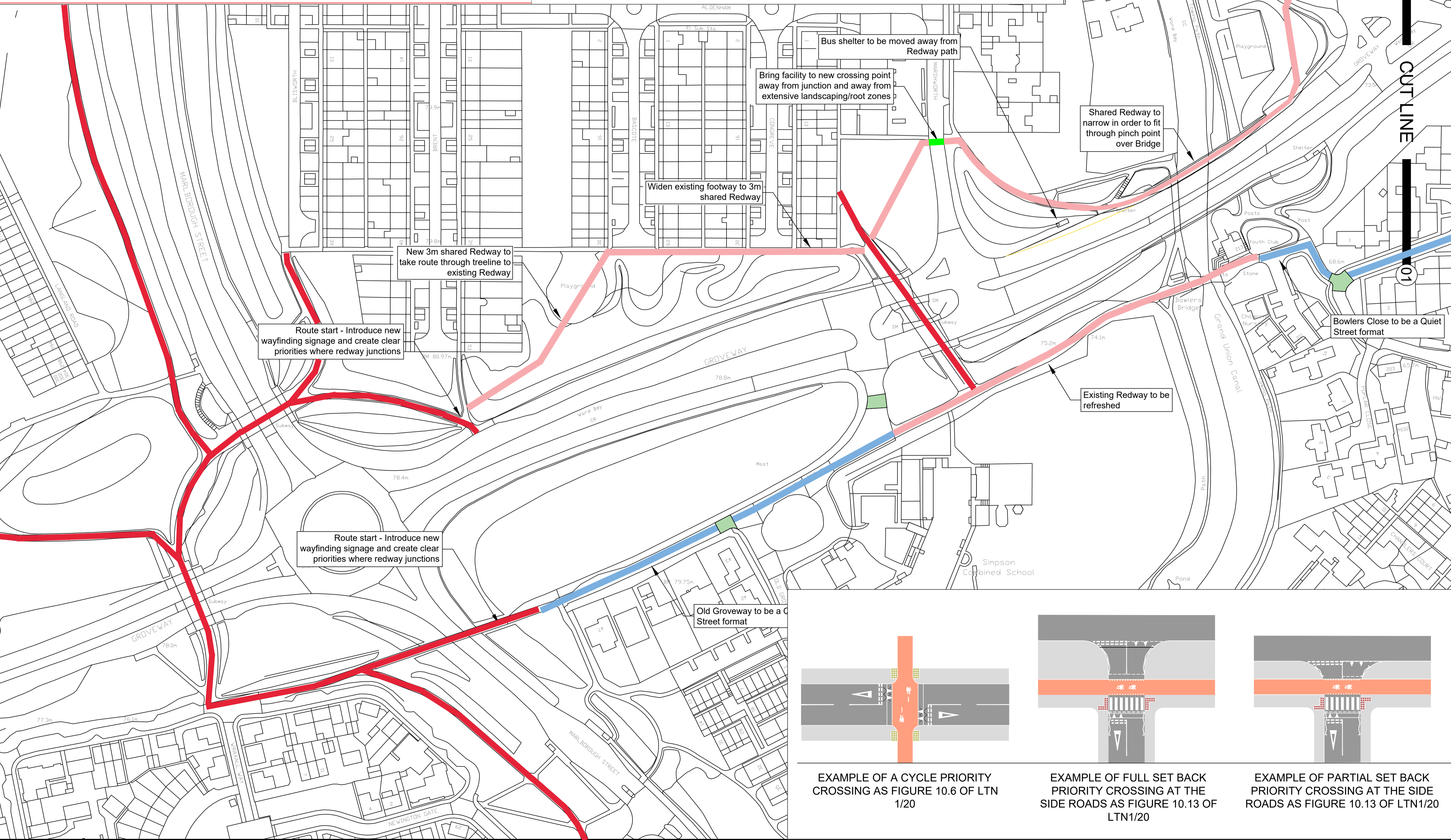


EXAMPLE OF TYPICAL SECTION THROUGH A 5m SEGREGATED REDWAY



EXAMPLE OF TYPICAL SECTION THROUGH A 3m SHARED REDWAY



Drop du layout and speed limit to

- GENERAL NOTES
- G1. DO NOT SCALE THIS DRAWING.
 - G2. ANY DIMENSIONAL DISCREPANCIES SHOULD BE NOTIFIED TO THE ENGINEER IMMEDIATELY.
 - G3. ALL DIMENSIONS ARE IN MILLIMETRES - (mm)
 - G4. ALL LEVELS ARE IN METRES - (m) AND ARE ABOVE ORDNANCE DATUM AT NEWLYN, CORNWALL UNLESS NOTED OTHERWISE.
 - G5. NORTH SHOWN INDICATIVE ONLY
 - G6. THIS DRAWING IS TO BE READ IN CONJUNCTION WITH ALL RELEVANT SPECIFICATIONS, DRAWINGS, DETAILS AND OTHER DESIGN INFORMATION.
 - G7. ALL DRAWINGS AND WRITTEN MATERIAL CONTAINED WITHIN, CONSTITUTE ORIGINAL AND UNPUBLISHED WORK OF THE ENGINEER AND MAY NOT BE DUPLICATED, USED, REPRODUCED OR DISCLOSED WITHOUT WRITTEN CONSENT OR EXPRESS PERMISSION FROM THE ENGINEER.
 - G8. ALL INFORMATION CONTAINED IN THIS DOCUMENT IS COPYRIGHT ©
 - G9. WHERE THE CONTRACTOR UNDERTAKES OR ENGAGES A THIRD PARTY TO UNDERTAKE TEMPORARY WORKS DESIGN, OR VARIES THE PELL FRISCHMANN DESIGN IN ANY WAY, THEN THE CONTRACTOR WILL TAKE FULL RESPONSIBILITY AND LIABILITY FOR ALL DESIGN ASPECTS, INCLUDING A DESIGN RISK ASSESSMENT. THE CONTRACTOR SHALL INFORM PELL FRISCHMANN OF ANY PROPOSED VARIANCES TO THE DESIGN.

- KEY:
- 3m Shared Use Pathway
 - Crossing point
 - New Kerb Alignment Required
 - Quiet Street
 - Raised Table
 - Existing redway

OPTION B Sheet 1

P01	FOR APPROVAL	AH	BB	-	18.08.23
REV	DESCRIPTION	DRN	CHK	APP	DATE

Pell Frischmann
 SUITE 109, PLAZA 668, HITCHIN ROAD, BEDFORDSHIRE LU2 7XH
 Telephone +44 (0)158 232 1222
 Email: pfluton@pellfrischmann.com
 www.pellfrischmann.com

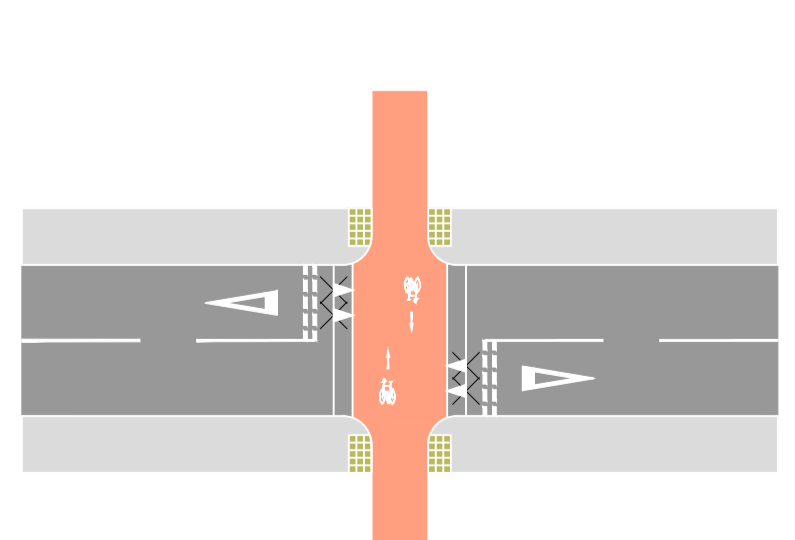
Architect/Client/Contractor
MILTON KEYNES COUNCIL

Project
**MILTON KEYNES
 LOCAL WALKING & CYCLING
 INFRASTRUCTURE PLAN**

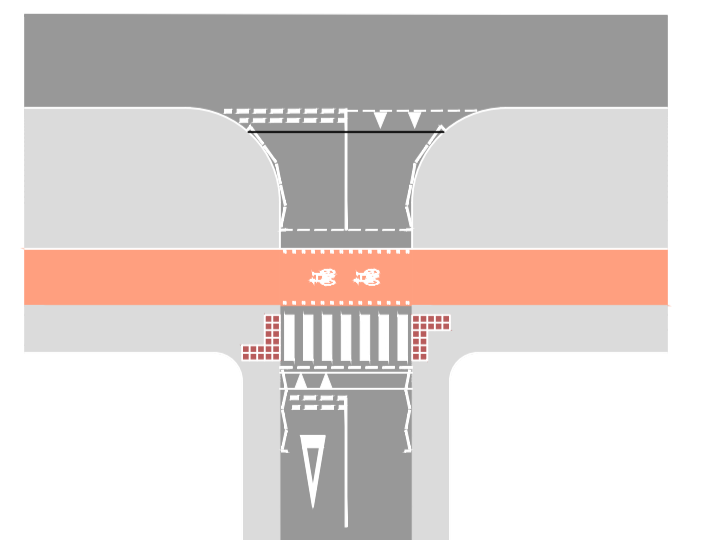
Drawing Title
**SCHEME NO.42 (SHEET 1 OF 3)
 GROVeway
 FEASIBILITY DRAWING**

Drawing Status			
FOR APPROVAL			
Name	Date	Status Code	S4
Drawn	AH	18.08.23	
Designed	SL	18.08.23	Scale 1:1000
Eng Chk	BB	18.08.23	Revision P01
Approved	-	-	
Drawing No.			

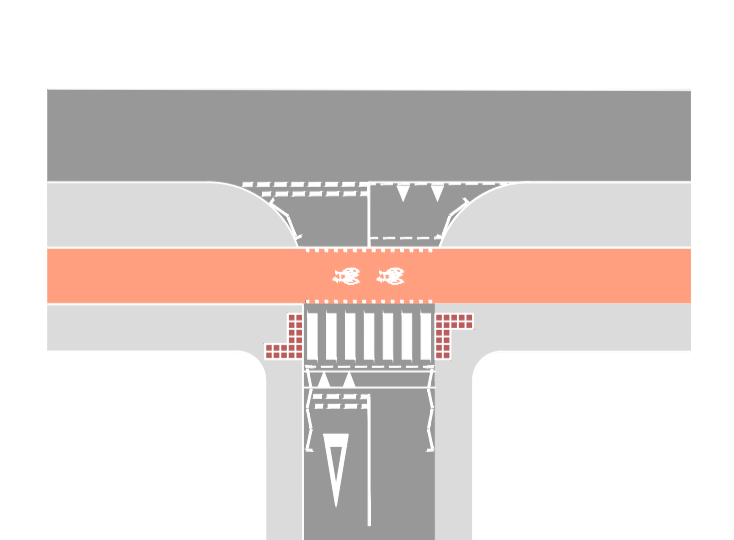
106346 - PEF-GA- ZZ - DR - D -2042-1



EXAMPLE OF A CYCLE PRIORITY CROSSING AS FIGURE 10.6 OF LTN 1/20



EXAMPLE OF FULL SET BACK PRIORITY CROSSING AT THE SIDE ROADS AS FIGURE 10.13 OF LTN1/20



EXAMPLE OF PARTIAL SET BACK PRIORITY CROSSING AT THE SIDE ROADS AS FIGURE 10.13 OF LTN1/20