

Sessions for parent/carers and children

Monday

Little Robins Baby Group Join us for a relaxed, nurturing session with sensory toys and a chance to meet and chat with other parents. For non-walkers. 10.00am - 11.30am

Lunch and Play Join us for a light lunch and an opportunity to socialise and play. 12.00 noon - 1.00pm

Tuesday

Tweenies Soft Play A stay and play session for our younger toddlers aged 12month-2 years- a transition before our full stay and play session. Snack provided 10.00am - 11.30am

Baby Clinic **At Rowans Children's Centre** 13A Moorfoot, Fullers Slade. MK11 2BD 9.30am - 11.30am
An opportunity to talk to the health visiting team and get your baby weighed.

Foodbank Top Up Shop **At Conniburrow Community Centre** 37-39 Conniburrow BLVD MK14 7DX 10.00am - 11.30am
Choose 10 store cupboard items for £2.00 for individuals or 20 items for £4.00 per family. **DON'T FORGET YOUR BAGS**

Robins's Walk and Chatter **Meet at Robins Children Centre** 1.00pm - 2.00pm
Lets take a wander and see where our little feet take us.

Data Protection Privacy Statement

We collect and use information about you so that we can provide you with the best services possible. Full details about how we use this data and the rights you have around this can be found at www.milton-keynes.gov.uk/cafcprivacy. If you have any data protection queries, please contact the Data Protection Officer at data.protection@milton-keynes.gov.uk

Wednesday

Volunteers Course **Volunteers - City and Guilds - Level 1 Award** 9.30am - 11.30am
Starting September 2023
To find out about the CLMK/ Parenting Courses on a Wednesday. Please contact the centre. Creche available

Robins Community Food Share Help us reduce food waste. Free fruit, veg and bakery goods. 1.00pm - 2.00pm
DON'T FORGET YOUR BAGS

Baby Clinic **At Neath Hill Health Centre** 1.00pm - 3.00pm
1 Tower Crescent, Neath Hill. MK14 6JY
An opportunity to talk to the health visiting team and get your baby weighed.

Sensory Room

Wednesdays and Thursdays, 1.00pm - 2.00pm

Sensory resources, bubble tube and lights to share with your child
Please contact the centre to book. The sensory room is suitable for 4 people.

Thursday

Stay and Play Activities and experiences for you and your child to support their development through play. Snack provided. 10.00am - 11.30am

Robins Lending Library Choose a book from our library selection to take home, share and read together. 11.30am - 12.00 noon

Baby Clinic **At Hedgerows Family Centre** 9.30am - 11.30am
Playzone, Langland Road, Netherfield. MK6 4NP
An opportunity to talk to the health visiting team and get your baby weighed.

Friday

Feel Good Friday Mindful Crafts Learn the skills to create beautiful arts and crafts and enhance or transform items you already have. Have fun in a relaxing environment. Creche available. To book your place please contact the centre. 10.00am - 11.30am

Community Fridge **At Conniburrow Community Centre** 34 Bramble Avenue, Conniburrow. MK14 7AP 9.30am - 11.30am
Help reduce waste. Free fruit, vegetables and bakery items.
DON'T FORGET YOUR BAGS

Support and Advice

If you need any support or advice please contact the centre for more information.

We work in partnership with a host of agencies in Milton Keynes, so please reach out. No amount of help needed is ever too big or small.

Parenting Courses

A rolling programme of courses to support parenting skills, child development and healthy lifestyles. **Please speak to a member of the team for more details.**

Information

Private room hire

Did you know...? That our centres are available for private hire? They are perfect for parties, meetings and wedding receptions. To find out more details for bookings please contact your local centre.



Working Parent's Group The 2023 tour update...

Saturday 9th September 2023	Rowans Family Centre, Fullers Slade	01908 565852
Saturday 23rd September 2023	Sunshine Children's Centre, Furzton	01908 508566
Saturday 21st October 2023	Hedgerows Family Centre, Netherfield	01908 239000
Saturday 25th November 2023	Saplings Children's Centre, Central Bletchley	01908 378123
Saturday 9th December 2023	Moorlands Family Centre, Beanhill	01908 679819

All Saturday sessions are from 9:30am - 11:30am

Any enquiries, please contact
www.milton-keynes.gov.uk/childrens-centre

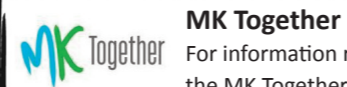
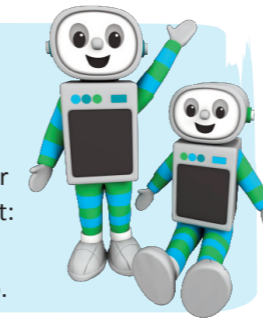


Time for twos

You are automatically eligible for 15 HOURS FREE early education for your three or four year old

You may also be eligible for 30 hours FREE early education for your three or four year old. To find out if you are eligible visit:
www.childcarechoices.gov.uk

Or visit your local Children's and Family Centre for more help.



MK Together

For information regarding MK Safeguarding Partnership arrangements go to the MK Together website: www.mktogether.co.uk/

Volunteering

If you have a few hours to spare your local Children and Family Centres need you. We have varying roles available offering accredited training to enhance your CV and support your local community.

Healthy Start Vitamins



Healthy Start vitamins coupons can be exchanged at all the centres.

Food Bank

Please speak to a member of staff at your local centre.



Find us on Facebook



Are you registered at your local children's centre? If not, visit:
www.milton-keynes.gov.uk/childrens-centres

Robins Children's Centre
Glovers Lane
Heelands
Milton Keynes
MK13 7QL



M19298- September 2023



The Robins Children's Centre Programme

Services and support for families with under fives

Open Monday - Thursday 8.30am - 4.30pm
and Friday 8.30am - 4.00pm

Robins Reach Area:

Heelands, Bradwell, Bradwell Abbey, Great Holm, Two Mile Ash, Wymbush

www.milton-keynes.gov.uk/childrens-centre

01908 318758

