



# Daisychain Family Centre Programme

Services and support for families and the community

Open Monday to Friday from 8.00am

Areas Daisychain Family Centre covers:

West Bletchley, Far Bletchley, Granby, Mount Farm, Denbigh North, Denbigh West and Brickfields

[www.milton-keynes.gov.uk/childrens-centres](http://www.milton-keynes.gov.uk/childrens-centres)

01908 641454

 **Milton Keynes**  
City Council

## Sessions for parents/carers and children

### Monday

**Stay and Play** A fun filled session for you and your child to enjoy, with a variety of activities, story, and song time. 9.45am - 11.15am

**Let's Interact and Play** A fun interactive group to support your child's early communication and speech through play. Please speak to a member of staff for more information. 1.30pm - 2.30pm

**Storytime Café** This snack time café will be an opportunity to join in with stories, songs and have a snack. 2.30pm - 3.00pm

### Development Reviews

**Mondays, 9.00am - 4.15pm**

Please contact the Health Visitor's hub on 01908 725100 for further information.

### Tuesday

**Little Explorers** This under 1's session is perfect for those little feet who love to explore. 9.30am – 10.30am

**Mum's to be Café** This session is a time to meet other mum's to be, have a chat with refreshments. 10.30am - 12.00 noon

### Drop in Breakfast Club

**Tuesdays and Wednesdays, 8:45am - 9:45am**

Our breakfast club is a time for you to drop in and have toast and tea and time to play with your children before the centre sessions.

## Tuesday - continued

### Introduction to Parental Services and the Childcare Sector - Entry level 3

**Tuesday, 10.00am - 12.00 noon**

This is a course to support individuals interested in a career in Childcare, this course will give participants the entry level to eventually go on and study a level 1-3 in childcare. This is a bookable course, if you are interested, please speak to a member of staff.

---

<b>Let's get physical</b>	Join us at the Frank Moran Centre, for a fun fitness session for ladies 18+ of all abilities.	12.30pm - 1.30pm
---------------------------	-----------------------------------------------------------------------------------------------	------------------

---

<b>Story, Songs and Rhymes</b>	Enjoy this themed story and song time session – to spark a love of books.	2.00pm - 3.00pm
--------------------------------	---------------------------------------------------------------------------	-----------------

---

<b>Bumps and Babes</b>	This is a non-walking baby group, for new mums and mums to be.	2.00pm - 3.00pm
------------------------	----------------------------------------------------------------	-----------------

---

### Development Reviews

**Tuesdays, 12:45pm - 4.15pm**

Please contact health visitor's hub on 01908 725100 for further information.

### Table Tennis Hire

**Tuesdays, Wednesdays, Thursdays and Fridays, 3.15pm- 4.00pm**

Please contact the centre on 01908 641454 if you would like to book our table.

### Data Protection Privacy Statement

We collect and use information about you so that we can provide you with the best services possible. Full details about how we use this data and the rights you have around this can be found at [www.milton-keynes.gov.uk/cafcprivacy](http://www.milton-keynes.gov.uk/cafcprivacy). If you have any data protection queries, please contact the Data Protection Officer at [data.protection@milton-keynes.gov.uk](mailto:data.protection@milton-keynes.gov.uk)

## Wednesday

### Midwives – Antenatal Appointments

#### Wednesdays and Thursdays, 8.30am - 4.15pm

These sessions will be pre booked by your midwife.

---

<b>Mucky Pups</b>	This is an exciting session where your babies and children will love getting messy. We advise you to bring a change of clothes. £1.00 contribution welcome.	9.45am - 10.45am
<b>Family Fortunes</b>	This session will support you to understand 'need vs want', tips to manage your money better, learn how to save money on essential family expenditure – 'Stretch that cash'.	10.00am - 12.00 noon
<b>Soft Play</b>	A fun session for you and your child/ren to enjoy and explore building, climbing, and crawling. <b>Under 4's only.</b>	1.15pm - 2.00pm
<b>Toddler Time</b>	Come and join Annette for a fun filled music session for under 5's.	2.00pm - 2.30pm
<b>Wellbeing Wednesday</b>	Come along to this adult session for a chat with our team, games, arts, crafts and drinks provided. Some well-earned you time.	1.30pm – 3.00pm

---

## Thursday

---

<b>Little Boppers</b>	Bring your under 2's for a fun packed session featuring dance, soft play, rhymes and much more.	9.30am - 10.30am
<b>Storytime Cafe</b>	This snack time café will be an opportunity to join in with stories, songs and have a snack.	10.30am - 11.00am

---

## Thursday - continued

---

<b>Stay and Play</b>	A fun filled session for you and your child to enjoy, with a variety of activities, the session ends with a story and song time.	1.30pm - 3.00pm
----------------------	----------------------------------------------------------------------------------------------------------------------------------	-----------------

---

### ESOL Course

#### Thursday, 1.00pm - 3.00pm

This Session is for adults that would like to learn to speak English. The focus is on improving basic communication skills. **This is a bookable session**, please speak to a member of staff for more information.

---

<b>Afterschool Story Time Café</b>	This story time café will be an opportunity to relax with some stories, songs and have a snack.	3.30pm - 4.00pm
------------------------------------	-------------------------------------------------------------------------------------------------	-----------------

---

## Friday

---

<b>Baby Clinic</b>	An opportunity to drop in, have your babies weighed and speak to the health visiting team. Please arrive 15 minutes before the end of clinic to ensure a Health Visitor can see you and your child.	9.30am - 11.30am
--------------------	-----------------------------------------------------------------------------------------------------------------------------------------------------------------------------------------------------	------------------

---

<b>Baby Group</b>	This baby group is for 0-12 months and provides a sensory experience, play experiences and with time to meet other parents.	9.30am - 11.30am
-------------------	-----------------------------------------------------------------------------------------------------------------------------	------------------

---

### Development Reviews

#### Fridays, 9.30am - 11.45am

Please contact Health Visitor's hub on 01908 725100 for further information.

---

<b>Outdoor Explorers</b>	This session will be an opportunity for children to explore and join in with activities in the outside environment at the centre and local parks.	2.00pm - 3.00pm
--------------------------	---------------------------------------------------------------------------------------------------------------------------------------------------	-----------------

---

## Friday - continued

### Washing Hire

This session is a time to meet other families, have a chat with refreshments. It also provides an opportunity if needed, for you to use the centres washing machine whilst at the café. We will need you to book in to use the washing machine and we ask for a £1.00 donation.

1.00pm - 3.00pm

## Community food trolley

### Monday - Friday

The food trolley is available daily, where you can help yourself to food.



### MK Together

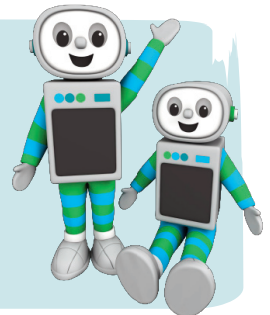
For more information Safeguarding in MK visit the MK Together website: [www.mktogether.co.uk/](http://www.mktogether.co.uk/)

### Time for twos

You are automatically eligible for 15 HOURS FREE early education for your three or four year old

You may also be eligible for 30 hours FREE early education for your three or four year old. To find out if you are eligible visit: [www.childcarechoices.gov.uk](http://www.childcarechoices.gov.uk)

Or visit your local Children's and Family Centre for more help.



## Girl Pack and Wuka Pants

Please ask a staff member if you need this service.



# Working Parent's Group

## The 2023 tour update...

Saturday 9th September 2023	Rowans Family Centre, Fullers Slade	01908 565852
<b>Saturday 23rd September 2023</b>	<b>Sunshine Children's Centre, Furzton</b>	<b>01908 508566</b>
Saturday 21st October 2023	Hedgerows Family Centre, Netherfield	01908 239000
<b>Saturday 25th November 2023</b>	<b>Saplings Children's Centre, Central Bletchley</b>	<b>01908 378123</b>
Saturday 9th December 2023	Moorlands Family Centre, Beanhill	01908 679819

All Saturday sessions are from 9:30am - 11:30am

Any enquiries, please contact  
[www.milton-keynes.gov.uk/childrens-centre](http://www.milton-keynes.gov.uk/childrens-centre)



## Information

### Private room hire

Did you know...? That our centres are available for private hire? They are perfect for parties, meetings and wedding receptions. To find out more details for bookings please contact your local centre.

### Parents Courses we offer

- Nurturing Programme
- Incredible babies
- Triple P

### Family Support

Family support available for all households. Please ask for further details from the team.

## Volunteering

Gain some work experience, job opportunities or just help your local community? If so our Children and Family Centres need you! If you have a few hours to spare your local centre has varying roles available, offering accredited volunteer training and enhance your CV.

### Healthy Start Vitamins



Healthy Start vitamins coupons can be exchanged at all the centres.

### Food Bank

*Please speak to a member of staff at your local centre.*



Find us on Facebook



Register with your local Children and Family centre at:  
[www.milton-keynes.gov.uk/childrens-centres](http://www.milton-keynes.gov.uk/childrens-centres)

**Daisychain Family Centre**  
Melrose Avenue  
Bletchley  
Milton Keynes  
MK3 6PS

**MK Milton Keynes**  
City Council