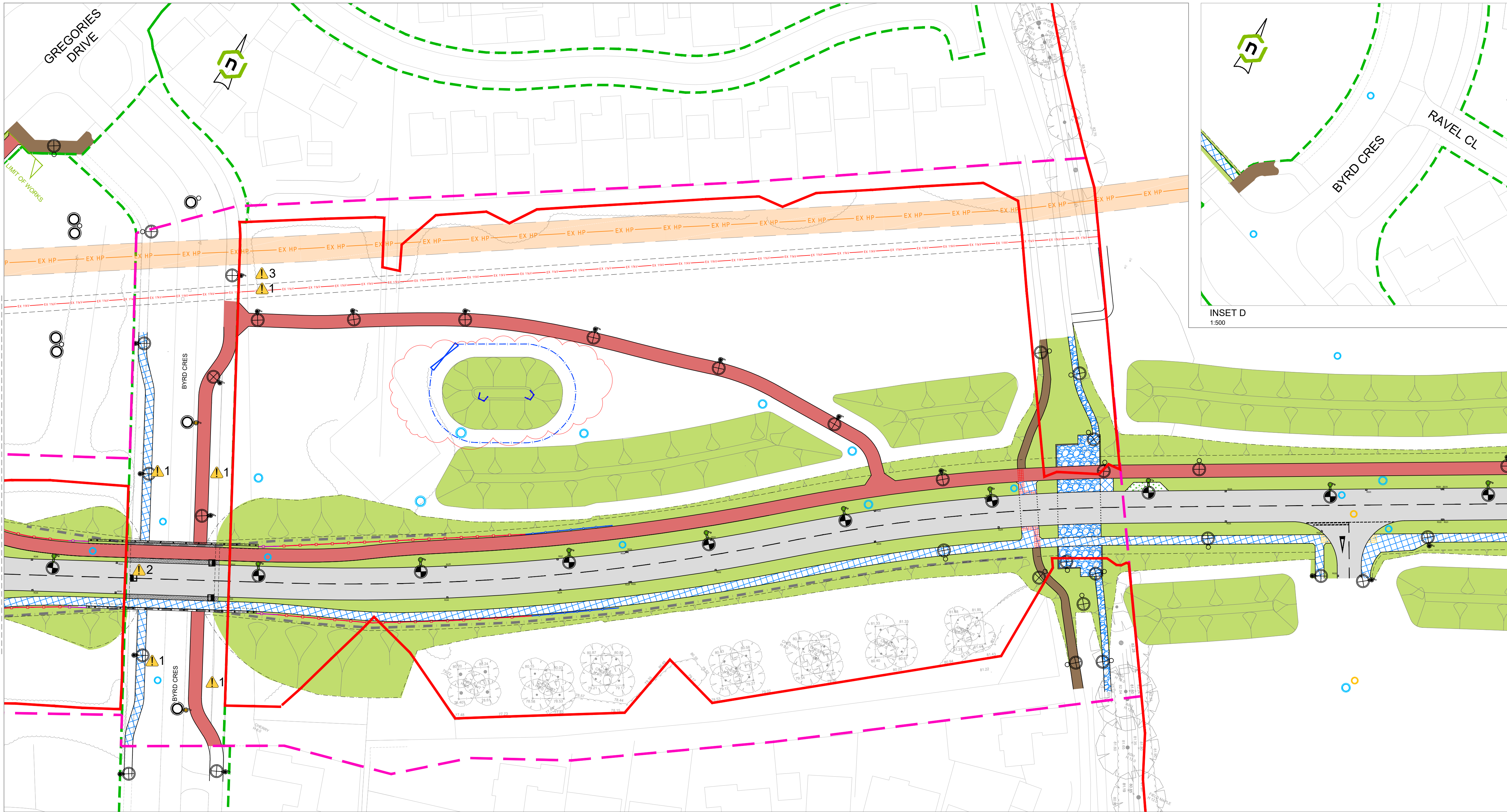
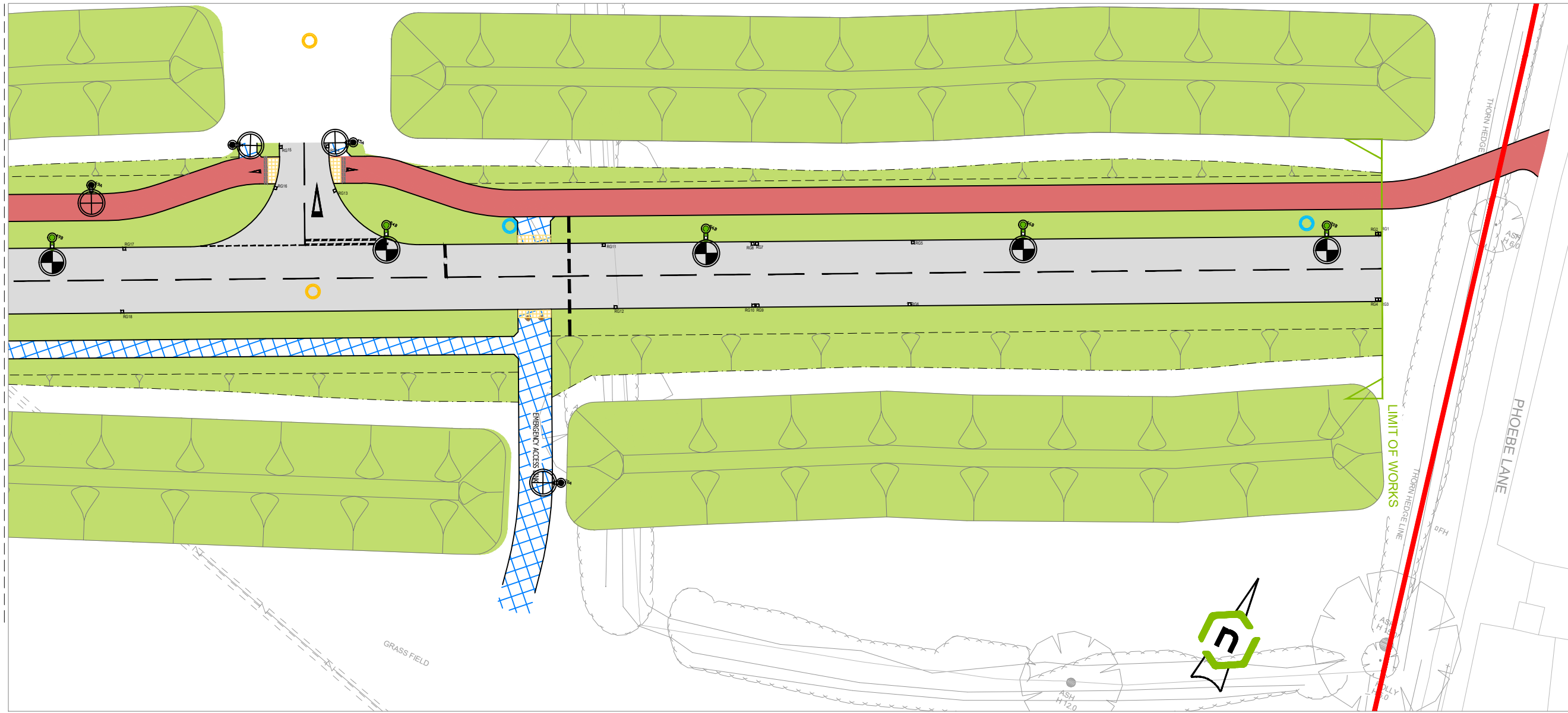


FOR CONTINUATION SEE DRAWING WDC-LE-HAD-XX-DR-CE-0101



INSET B
1:500



INSET C
1:500



KEY PLAN
1:2,500



GENERAL NOTES

- THIS DRAWING SHOULD NOT BE REPRODUCED IN WHOLE OR PART WITHOUT THE WRITTEN CONSENT OF LINK ENGINEERING.
- DO NOT SCALE FROM THIS DRAWING. UNITS ARE IN METRES UNLESS OTHERWISE SPECIFIED.
- THE CONTRACTOR IS TO CHECK ALL INFORMATION PROVIDED PRIOR TO COMMENCING WORKS AND SEEK CLARIFICATION FROM THE ENGINEER IN RESPECT TO ANY AMBIGUITIES FOUND.
- THIS DRAWING SHOULD BE READ IN CONJUNCTION WITH ALL OTHER SCHEME SPECIFIC DRAWINGS.
- ALL TRAFFIC SIGNS AND ROAD MARKINGS SHALL BE PROVIDED IN ACCORDANCE WITH THE TRAFFIC SIGNS REGULATIONS AND GENERAL DIRECTIONS 2016 (INCLUDING SUBSEQUENT AMENDMENTS 1 & 2) AND THE CORRESPONDING TRAFFIC SIGNS MANUALS.
- ALL EARTHWORKS SLOPES TO BE NO STEEPER THAN 1 IN 5 UNLESS ADVISED OTHERWISE BY THE ENGINEER.
- MKCC TO PROVIDE LOW MAINTENANCE LANDSCAPE DESIGN FOR THE ROUNDABOUT WHICH IS TO BE INSTALLED BY THE CONTRACTOR.

ID	RISK	MITIGATION
1	Contact/damage to underground services during excavation	Highlighted on plan
2	Working at height	Highlighted on plan
3	Works adjacent to high pressure gas main	Highlighted on plan

RESIDUAL PROJECT RISKS

KEY

- CARRIAGEWAY IN BITUMINOUS CONSTRUCTION
- REDWAY CONSTRUCTION
- FOOTWAY CONSTRUCTION
- BRIDLEWAY CONSTRUCTION
- SOFT VERGE - MAXIMUM 1 in 3 SLOPE
- EXISTING REDWAY / FOOTWAY TO BE RETAINED
- BLOCK PAVING/ WOBBLE STRIP
- ASPHALT SPLITTER
- EXISTING PUBLIC BRIDLEWAY TO BE RETAINED
- INDICATIVE FENCE LOCATION IF REQUIRED
- PROPOSED SAFETY BARRIER
- PROPOSED SAFETY BARRIER TERMINAL LOCATION
- EXISTING HIGHWAY BOUNDARY
- MKC TRANSPORT CORRIDOR
- INDICATIVE LOCATION FOR 2m HIGH ACOUSTIC BARRIER TO BE INSTALLED WHEN REQUIRED BASED ON TRAFFIC LEVELS
- FOR STREET LIGHTING DESIGN REFER TO JACOBS DRAWINGS B2128839-JAC-HEL-H10E-DR-EO-0001 TO 0003
- GRASSCRETE MAINTENANCE STRIP
- PROPOSED MANHOLE
- EXISTING MANHOLE
- EXISTING HP GAS MAIN AND 6m EASEMENT ZONE
- UNCONTROLLED CROSSING TACTILE
- SIGNALISED CROSSING TACTILE

N	RSA 2 COMMENTS ADDRESSED	01.04.25	JPK
M	UPDATED AS PER MKCC COMMENTS	21.11.24	JK
L	UPDATED AS PER MKCC COMMENTS	16.10.24	VI
K	UPDATED TO SHOW NEW MAINTENANCE BAY	02.10.24	VI
J	UPDATED AS PER MKCC COMMENTS	06.09.24	VI
I	UPDATED AS PER MKCC COMMENTS	13.05.24	MSB
H	UPDATED AS PER MKCC COMMENTS	27.03.24	NLS
G	UPDATED AS PER MKCC COMMENTS	14.12.23	JPM
F	NOISE MITIGATION MEASURES IMPLEMENTED	22.11.23	VI
E	UPDATED AS PER MKCC COMMENTS	31.07.23	TC
D	UPDATED AS PER MKCC COMMENTS	31.07.23	TC
C	UPDATED AS PER MKCC COMMENTS	05.05.23	VBI
B	UPDATED AS PER MKCC COMMENTS	27.04.23	VBI
A	UPDATED AS PER MKCC COMMENTS	27.04.23	VBI
-	INITIAL ISSUE:	30.03.23	VBI
Rev.	Amendments	Date	By

Revisions

Client

Project

LE22714 - WAVENDON

Drawing

GRID ROAD DESIGN
GENERAL ARRANGEMENT
SHEET 2 OF 2

Scale @ A1

1:500

Drawn

VBI

Checked

RCG

Rev

N

Client

Find us @ www.linkeng.co.uk

Project

LE22714 - WAVENDON

Drawing

GRID ROAD DESIGN
GENERAL ARRANGEMENT
SHEET 2 OF 2

Scale @ A1

1:500

Drawn

VBI

Checked

RCG

Rev

N

WDC-LE-HAD-XX-DR-CE-0102 PRELIMINARY (S1)