

# **MILTON KEYNES CITY COUNCIL**

(VARIOUS ROAD, MILTON KEYNES)

(40 MPH AND 50 MPH SPEED RESTRICTIONS) ORDER 2026

**WHEREAS** Milton Keynes City Council (hereinafter referred to as “the Council”) in exercise of its powers under Sections 84(1), (2) and (3) and Part IV of Schedule 9 of the Road Traffic Regulation Act 1984 (“the Act of 1984”) and of all other enabling powers, and after consultation with the Chief Officer of Police in accordance with Part III of Schedule 9 to the Act of 1984, hereby makes the following Order:

1. This Order shall come into operation on the    day of    2026 and may be cited as “Milton Keynes City Council (Various Roads, Milton Keynes) (40 mph and 50mph Speed Restrictions) Order 2026”.
2. No person shall drive any class of motor vehicle at a speed exceeding 40 miles per hour on the lengths of road specified in the Schedule 1 to this Order.
3. No person shall drive any class of motor vehicle at a speed exceeding 50 miles per hour on the lengths of road specified in the Schedule 2 to this Order.
4. The plan annexed to this Order identifies the lengths of road subject to this Order, provided that where there is any inconsistency between the plan and the Schedule, it is the wording of the Schedule which shall prevail.
5. There shall be no exemptions from the provisions of this Order except for the emergency services and Special Forces drivers within the armed forces on operational duties.
6. Without prejudice to the validity of anything done or to any liability incurred in respect of any act or omission before the coming into effect of this Order any provisions of any Orders mentioned in Part 1 hereunto are hereby revoked or varied to the extent stated in that Schedule.

## **PART 1**

### **REVOCATIONS**

7. The following Order is hereby revoked in its entirety:
- Milton Keynes City Council (Various Roads, Haversham) (50 mph Speed Restriction) Order 2024**
8. The following Order is hereby revoked to the extent stated below:
- The Council of the Borough of Milton Keynes (Various Roads (Parts), Haversham) (40 mph Speed Restriction) Order 2013**
- Item **SL1** in the Schedule is revoked in its entirety.

## **SCHEDULE 1**

### **40 MPH SPEED RESTRICTION**

#### **HAVERSHAM ROAD, HAVERSHAM**

##### **BOTH SIDES**

- SL1** From a point 103 metres southwest of its junction with Beech Tree Close for 610 metres in a south westerly and then south easterly direction.

#### **NEWPORT WAY, HANSLOPE**

##### **BOTH SIDES**

- SL2** From a point 473 meters west of its junction with the unnamed road that links Tathall End and Hanslope Park, for a distance of 1,040 metres in a generally westerly direction.

#### **THE UNNAMED ROAD THAT LINKS TATHALL END AND GAYHURST**

##### **BOTH SIDES**

- SL3** From a point 30 metres west of its junction with B526, for a distance of 2.7 kilometres in a generally westerly direction.

#### **THE UNNAMED ROAD THAT LINKS TATHALL END AND HANSLOPE PARK**

##### **BOTH SIDES**

- SL4** From a point 150 metres south of its junction with the centreline of Newport Way, for a distance of 1,250 metres in a generally south-westerly direction.

**PARK ROAD, HANSLOPE**

BOTH SIDES

- SL5** From its junction with the unnamed road that links Tathall End and Hanslope Park, for a distance of 250 metres in a generally north-westerly direction.

**SCHEDULE 2**

**50 MPH SPEED RESTRICTION**

**BULLINGTON END ROAD, CASTLETHORPE**

BOTH SIDES

- SL6** From its junction with an unnamed road for 785 metres in a north-westerly and then south-easterly direction.

**WOLVERTON ROAD, CASTLETHORPE**

BOTH SIDES

- SL7** From its junction with an unnamed road for 1,285 metres in a south-westerly and then a generally easterly direction.

**PARK ROAD, HANSLOPE**

BOTH SIDES

- SL8** From a point 110 meters south-east of the south-eastern kerbline of Saxon Close, for a distance of 720 metres in a generally south-easterly direction.

**THE UNNAMED ROAD THAT LINKS THE HANSLOPE PARK AND HAVERSHAM**

BOTH SIDES

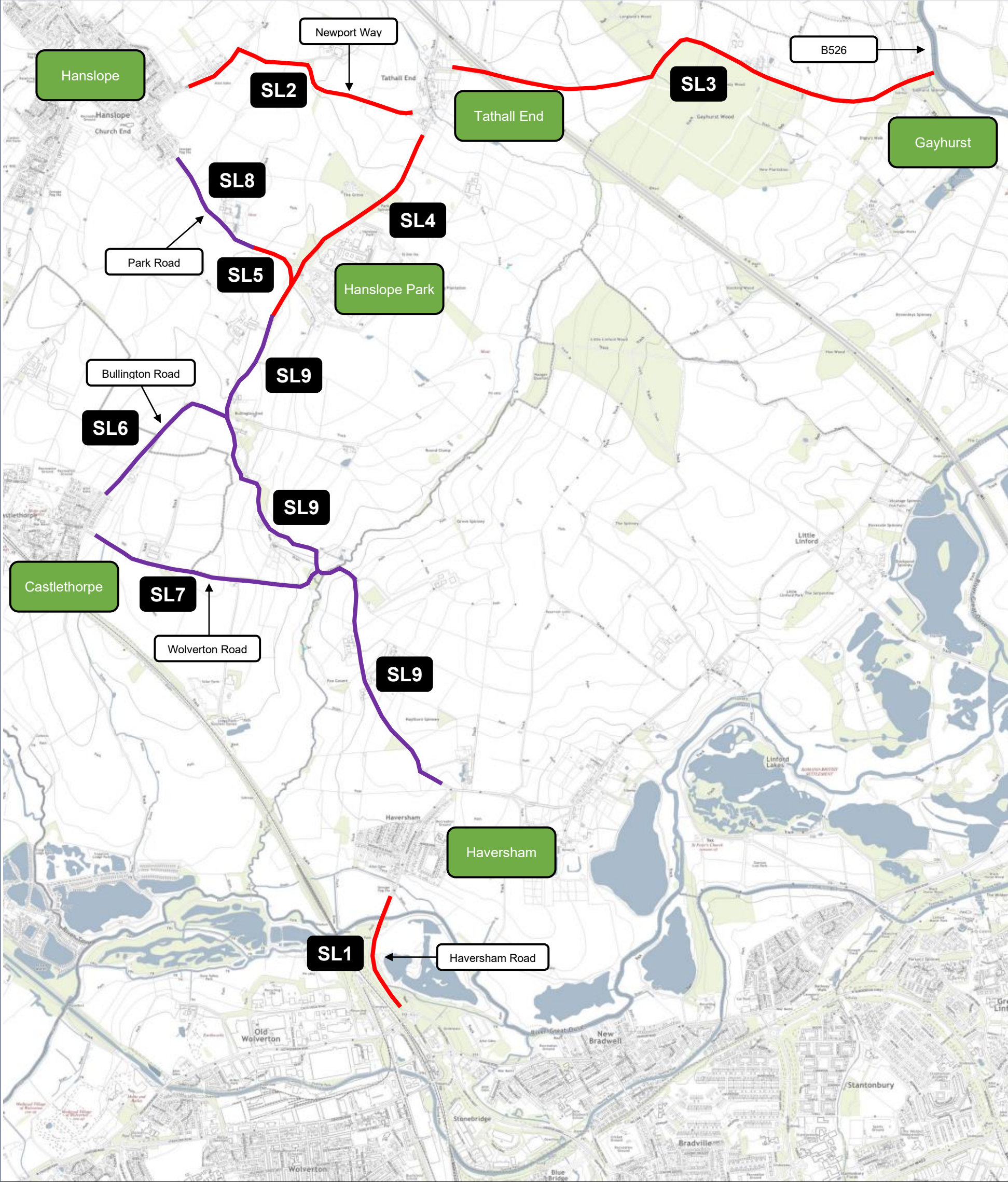
- SL9** From its junction with Wolverton Road, Haversham, for a distance of 3.1 kilometres in a generally north-westerly and northerly direction.

--- END ---

**MILTON KEYNES CITY COUNCIL**

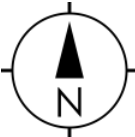
was hereunto affixed this      day of  
2026 in the presence of: -

.....  
**HEAD OF LEAGAL SERVICES**



- Key:**
- 40mph Speed Restriction
  - 50mph Speed Restriction
  - SL2 Schedule reference number

**Scale:**  
This map is not to scale



Map referred to in “Milton Keynes City Council (Various Roads, Milton Keynes) (40 mph and 50 mph Speed Restriction) Order 2026”

The Common Seal of Milton Keynes City Council was hereunto affixed in the presence of:

.....  
**Head of Legal Services**