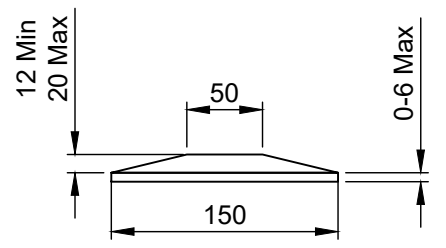
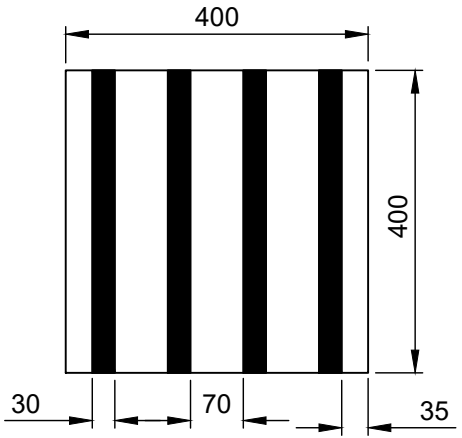


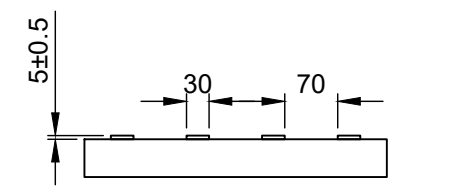
**PRECAST CONCRETE
CYCLEWAY TACTILE PAVING**



**CROSS-SECTION
OF RAISED LINE**



**TACTILE PAVING
MODULE**



**CROSS-SECTION
OR TRAMLINE**

NOTES

1. All dimensions in millimetres unless shown otherwise.
2. For kerbing details - See MKCC-1100-003.
3. Kerbs to be slightly tilted towards the carriageway to prevent ponding.
4. Edge of footway kerb (Type EF) as a boundary for the tactiles (See MKCC-1100-003).
5. For further information refer to Standard Detail Guidance Note drawing no. MKCC-100-001.

MK Milton Keynes City Council
Highways and Transportation
Civic Offices
1 Saxon Gate East
Central Milton Keynes
MK9 3EJ

DRAWING TITLE: Cycleway Interface Paving											
SCALE: NTS	REV: P01	DRAWN: PG	CHECKED: JM	APPROVED: LS	REV: -	AMENDMENTS: -	DRN: -	CHCK'D: -	APPR'D: -	DATE: -	
		INITIALS:			DRAWING NO: MKCC-1100-014						
		DATE:	17/02/2026	17/03/2026	17/03/2026						

