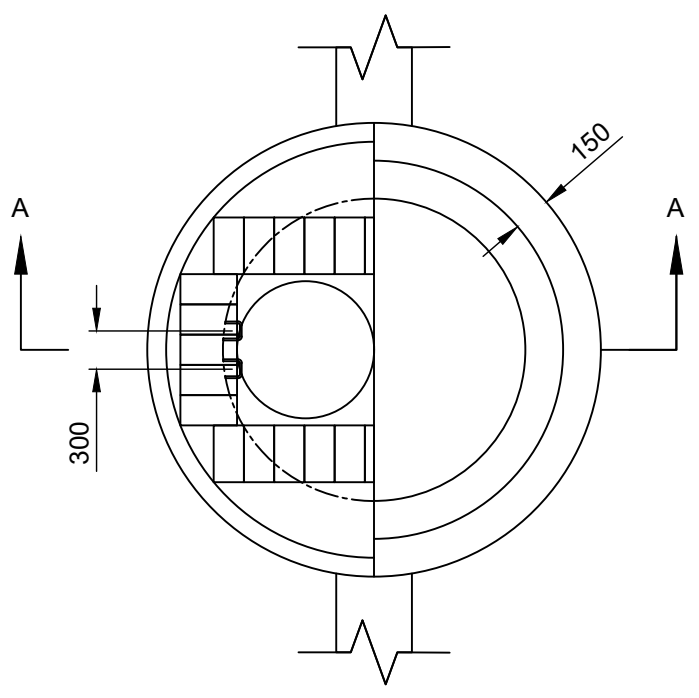
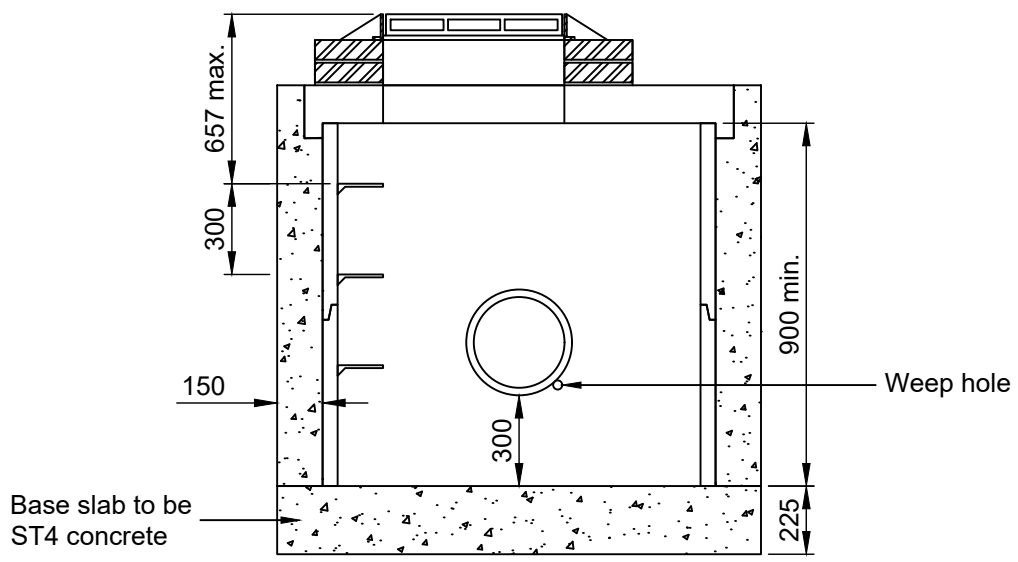


Deep Catchpit

3000 - 6000 between surface level and top of base



Plan View



Shallow Catchpit - Section A - A

1200 - 3000 between surface level and top of slab

NOTES

1. All dimensions in millimetres unless shown otherwise.
2. For deep manholes and catchpits requiring ladders, the contractor should submit a drawing of the ladder for approval of the MKCC engineer.
3. A 50mm weep hole is to be constructed adjacent to the inlet pipes of all catchpits to drain the stone surround to pipes. A 50mm pipe is to be used, extending 1m out of the catchpit.

Table 1:

Outlet Pipe diameter	Chamber diameter
100 - 300	1200
375 - 450	1350
525 - 600	1500

4. Precast concrete chamber must comply with BS EN 1917.
5. Covers and manholes must be laid to fall of finished surface.
6. For further information refer to Standard Detail Guidance Note drawing no. MKCC-100-001.

MK Milton Keynes City Council
 Highways and Transportation
 Civic Offices
 1 Saxon Gate East
 Central Milton Keynes
 MK9 3EJ

DRAWING TITLE: Precast Concrete Catchpit													
SCALE: NTS	REV: P01	INITIALS: PG	DATE: 17/02/2026	DRAWN: PG	CHECKED: JM	APPROVED: LS	DATE: 17/03/2026	REV:	AMENDMENTS:	DRN:	CHCK'D:	APPR'D:	DATE:
								DRAWING NO: MKCC-500-002					

