

MILTON KEYNES CITY COUNCIL

(VARIOUS ROADS, MILTON KEYNES)

(40 MPH AND 50 MPH SPEED RESTRICTIONS) ORDER 2026 (No.2)

WHEREAS Milton Keynes City Council (hereinafter referred to as “the Council”) in exercise of its powers under Sections 84(1), (2) and (3) and Part IV of Schedule 9 of the Road Traffic Regulation Act 1984 ("the Act of 1984") and of all other enabling powers, and after consultation with the Chief Officer of Police in accordance with Part III of Schedule 9 to the Act of 1984, hereby makes the following Order:

1. This Order shall come into operation on the day of 2026 and may be cited as “Milton Keynes City Council (Various Roads, Milton Keynes) (40 mph and 50mph Speed Restrictions) Order 2026 (No.2)”.
2. No person shall drive any class of motor vehicle at a speed exceeding 40 miles per hour on the lengths of road specified in the Schedule 1 to this Order.
3. No person shall drive any class of motor vehicle at a speed exceeding 50 miles per hour on the lengths of road specified in the Schedule 2 to this Order.
4. The plan annexed to this Order identifies the lengths of road subject to this Order, provided that where there is any inconsistency between the plan and the Schedule, it is the wording of the Schedule which shall prevail.
5. There shall be no exemptions from the provisions of this Order except for the emergency services and Special Forces drivers within the armed forces on operational duties.
6. Without prejudice to the validity of anything done or to any liability incurred in respect of any act or omission before the coming into effect of this Order any provisions of any Orders mentioned in Part 1 hereunto are hereby revoked or varied to the extent stated in that Schedule.

PART 1

REVOCATIONS

7. The following Order is hereby revoked in its entirety:

THE COUNCIL OF THE BOROUGH OF MILTON KEYNES (GRAFTON STREET (V6), MILTON KEYNES) (50 MPH SPEED RESTRICTION) ORDER 2001

SCHEDULE 1

40 MPH SPEED RESTRICTION

DANSTEED WAY (H4), MILTON KEYNES

BOTH SIDES

SL1 From a point 55 metres south-west of its junction with Tongwell Roundabout, for a distance of 835 metres in a south-westerly direction to a point 30 metres north-east of its junction with Willen Roundabout.

DANSTEED WAY (H4), MILTON KEYNES

BOTH SIDES

SL2 From a point 40 metres west of its junction with Downs Barn Roundabout, for a distance of 900 metres in a south-westerly direction to a point 49 metres north-east of its junction with Stanton Wood Roundabout.

PORTWAY (H5), MILTON KEYNES

BOTH SIDES

SL3 From a point 40 metres south-west of its junction with Loughton Roundabout, for a distance of 970 metres in a south-westerly direction to a point 50 metres north-east of its junction with Medbourne Roundabout.

CHAFFRON WAY (H7), MILTON KEYNES

BOTH SIDES

SL4 From a point 43xx metres south-west of its junction with Furzton Roundabout, for a distance of 1,010 metres in a south-westerly direction to a point 50 metres north-east of its junction with Westcroft Roundabout.

SCHEDULE 2

50 MPH SPEED RESTRICTION

GRAFTON STREET (V6), MILTON KEYNES

SOUTHBOUND CARRIAGEWAY

SL5 From a point 25 metres south-east of its junction with Bancroft Roundabout, for a distance of 1,590 metres in a south-easterly direction to a point 30 metres north-west of its junction with North Grafton Roundabout.

GRAFTON STREET (V6), MILTON KEYNES

NORTHBOUND CARRIAGEWAY

SL5 From a point 25 metres south-east of its junction with Rooksley Roundabout, for a distance of 985 metres in a north-westerly direction to a point 25 metres south-east of its junction with Bancroft Roundabout.

DANSTEED WAY (H4), MILTON KEYNES

WESTBOUND CARRIAGEWAY

SL5 From a point 60 metres north-east of its junction with Rooksley Roundabout, for a distance of 202 metres in a south-westerly direction to a point 80 metres south-west of its junction with Rooksley Roundabout.

DANSTEED WAY (H4), MILTON KEYNES

EASTBOUND CARRIAGEWAY

SL5 From a point 80 metres south-west of its junction with Rooksley Roundabout, for a distance of 202 metres in a north-easterly direction to a point 60 metres north-east of its junction with Rooksley Roundabout.

ROOKSLEY ROUNDABOUT, MILTON KEYNES

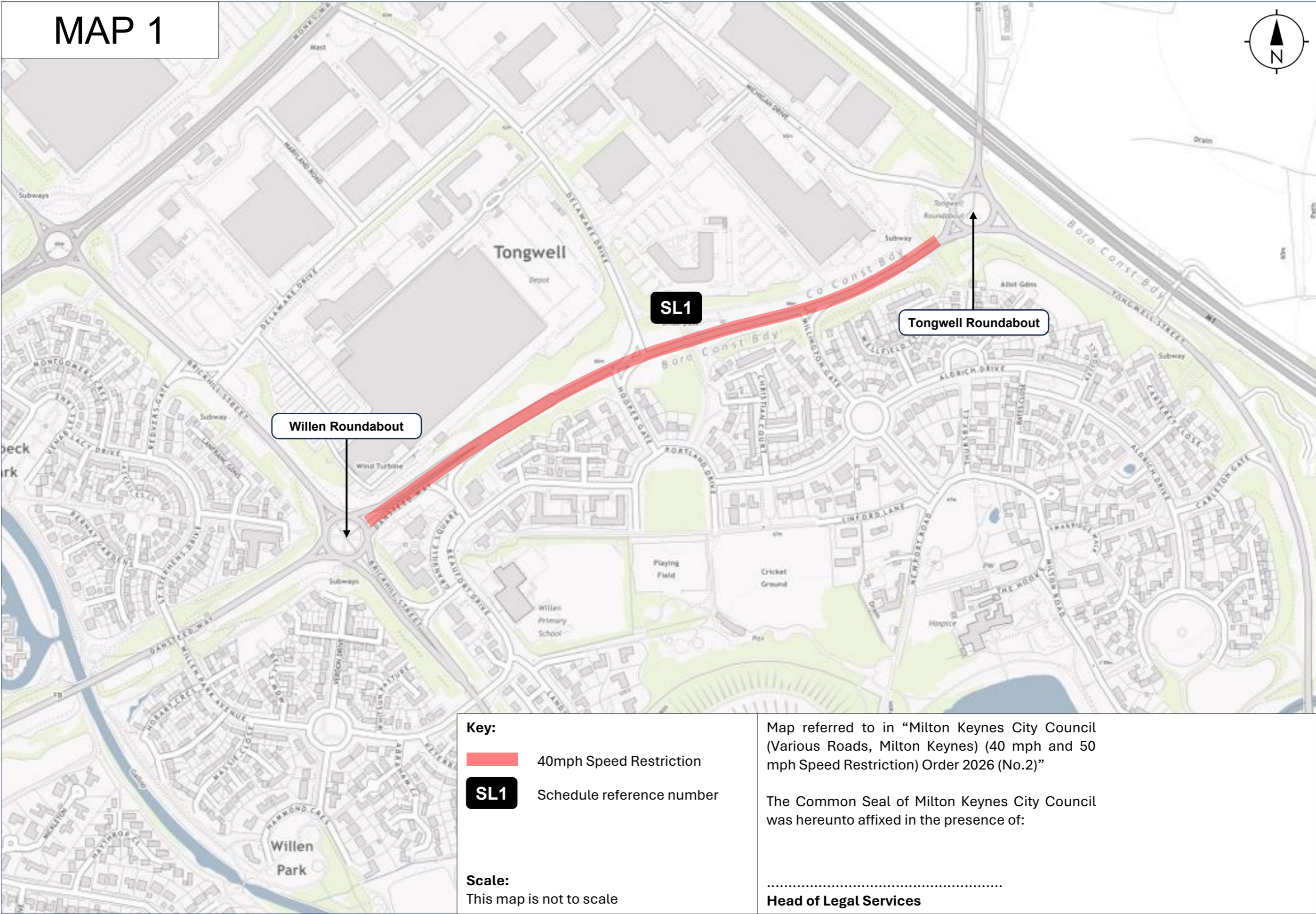
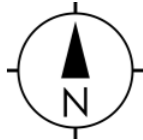
SL5 Its entire circumference.

--- END ---

MILTON KEYNES CITY COUNCIL was hereunto affixed this day of 2026 in the presence of: -

.....
HEAD OF LEAGAL SERVICES

MAP 1



- Key:**
- 40mph Speed Restriction
 - SL1** Schedule reference number

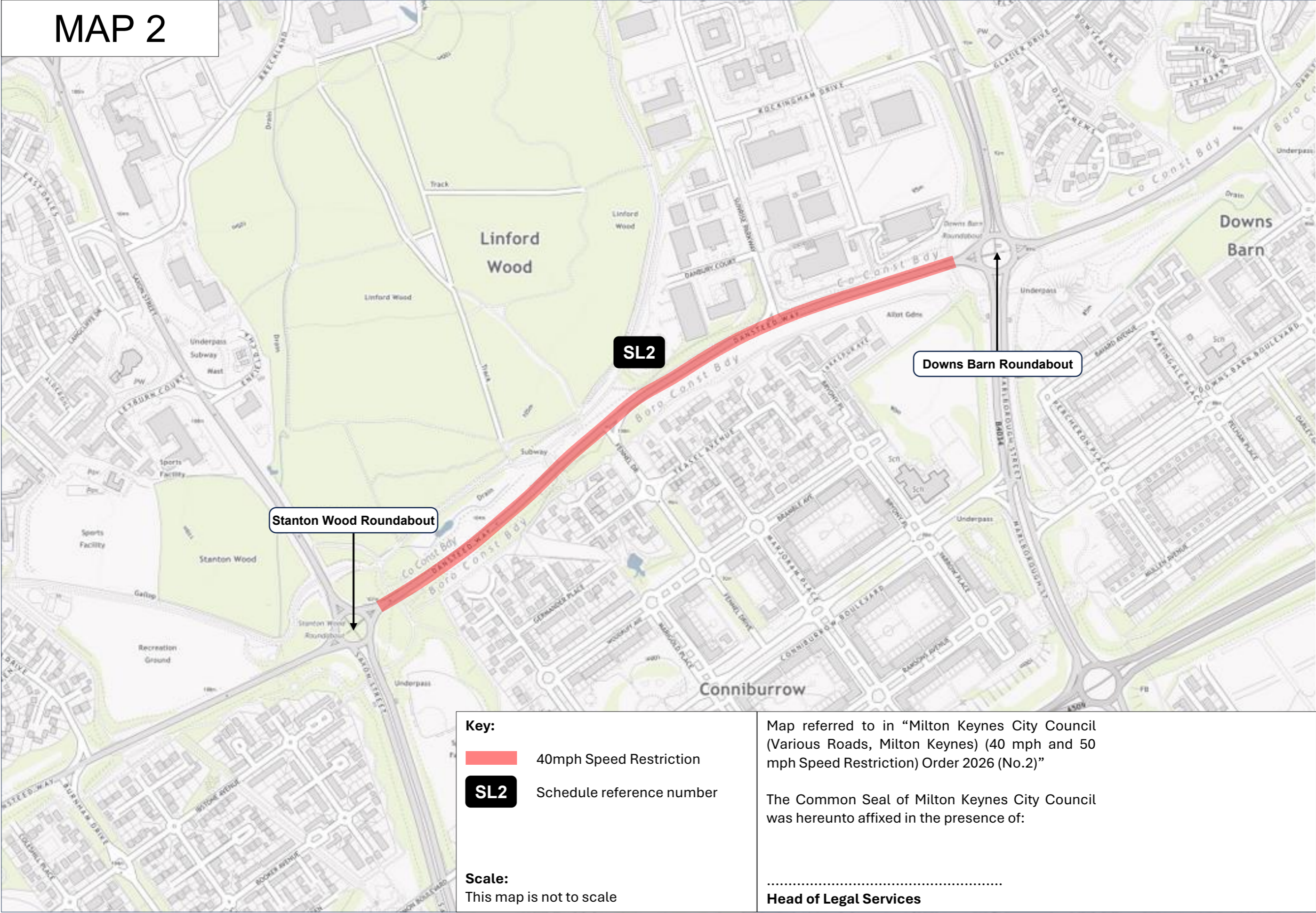
Scale:
This map is not to scale

Map referred to in "Milton Keynes City Council (Various Roads, Milton Keynes) (40 mph and 50 mph Speed Restriction) Order 2026 (No.2)"


The Common Seal of Milton Keynes City Council was hereunto affixed in the presence of:


.....
Head of Legal Services

MAP 2



Key:

 40mph Speed Restriction

 Schedule reference number

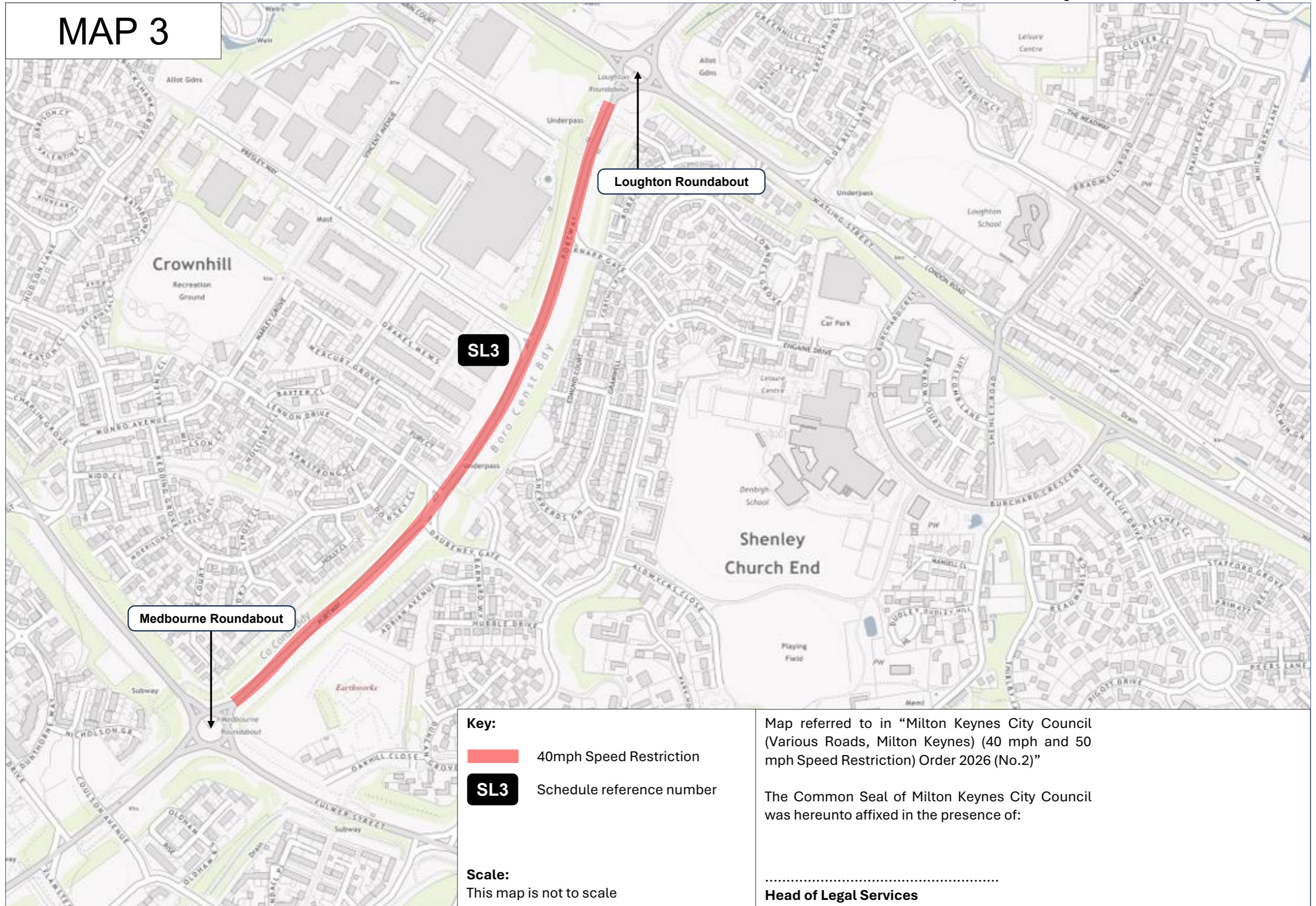
Scale:
This map is not to scale

Map referred to in "Milton Keynes City Council (Various Roads, Milton Keynes) (40 mph and 50 mph Speed Restriction) Order 2026 (No.2)"

The Common Seal of Milton Keynes City Council was hereunto affixed in the presence of:

.....
Head of Legal Services

MAP 3

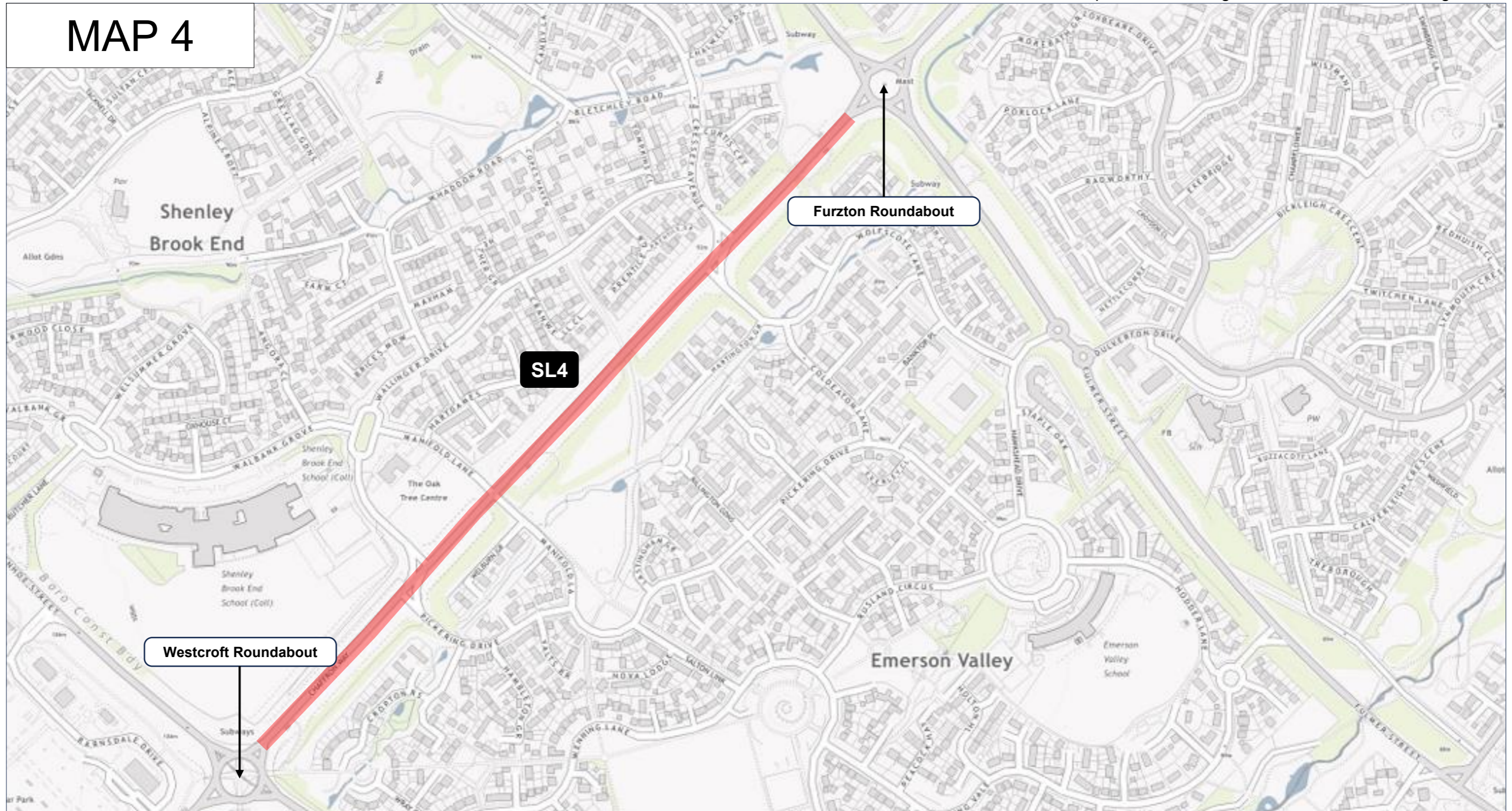


Map referred to in "Milton Keynes City Council (Various Roads, Milton Keynes) (40 mph and 50 mph Speed Restriction) Order 2026 (No.2)"

The Common Seal of Milton Keynes City Council was hereunto affixed in the presence of:

.....
Head of Legal Services

MAP 4



Key:

- 40mph Speed Restriction
- SL4 Schedule reference number

Scale:

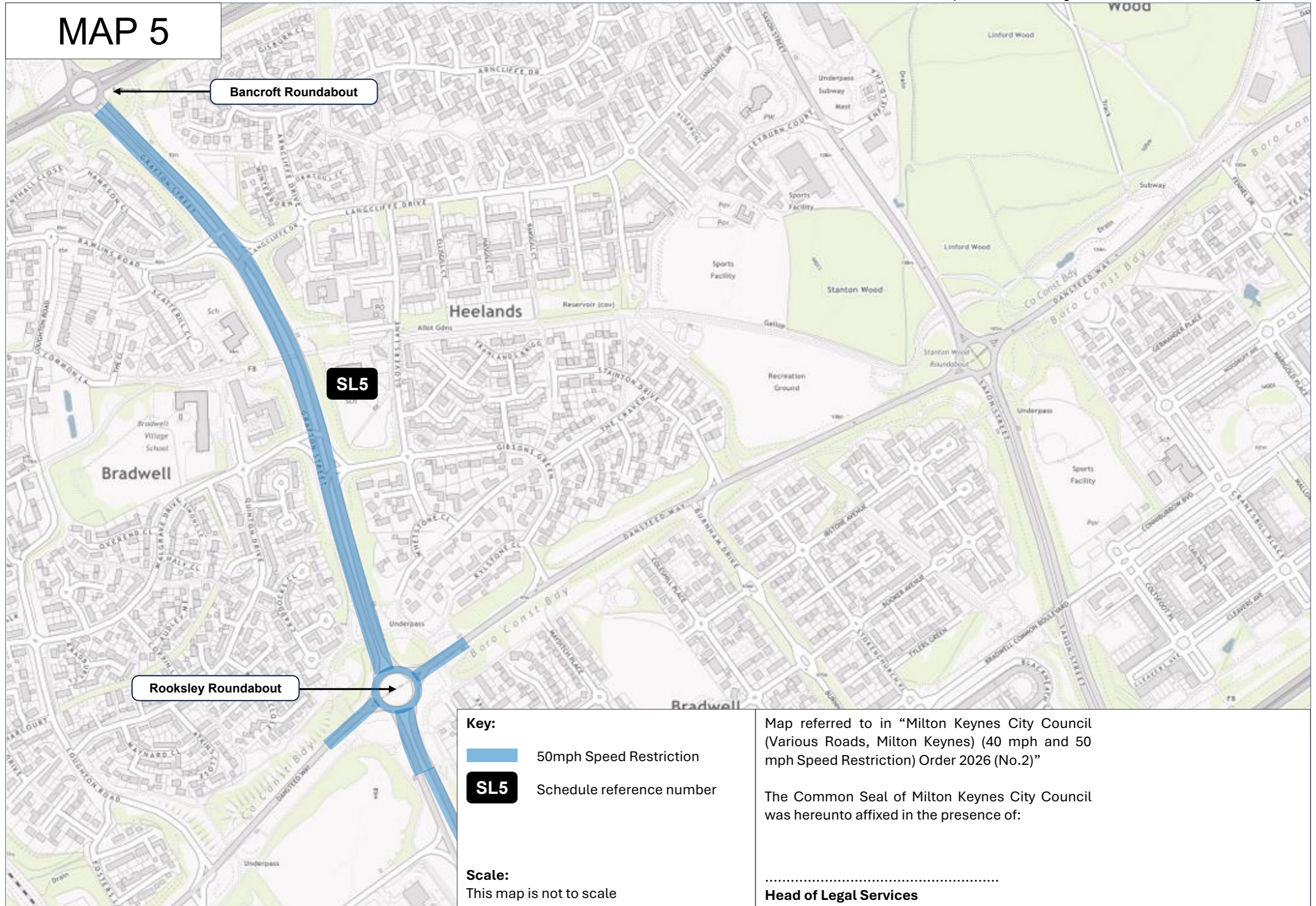
This map is not to scale

Map referred to in "Milton Keynes City Council (Various Roads, Milton Keynes) (40 mph and 50 mph Speed Restriction) Order 2026 (No.2)"

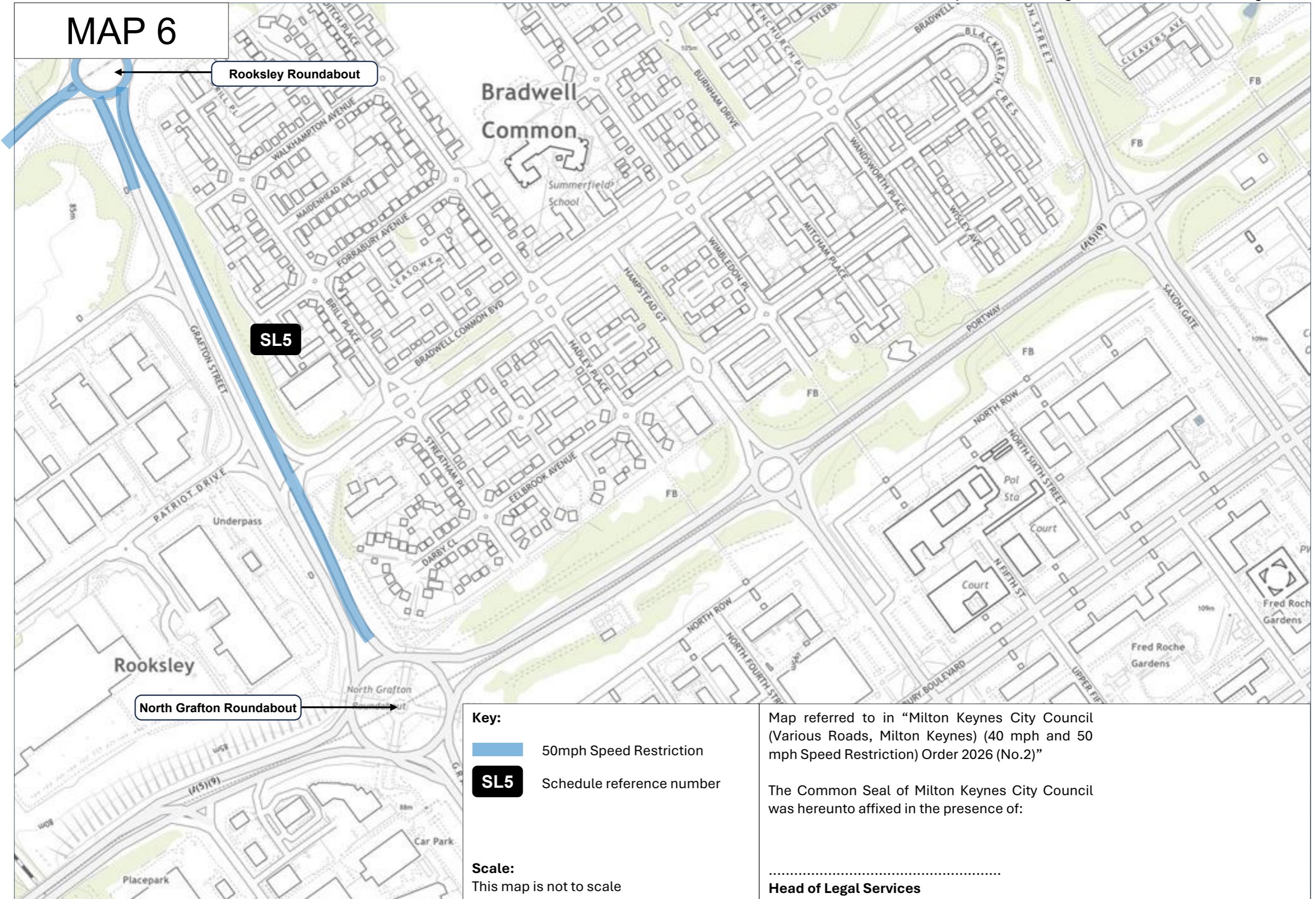
The Common Seal of Milton Keynes City Council was hereunto affixed in the presence of:

.....
Head of Legal Services

MAP 5



MAP 6



Rooksley Roundabout

SL5

North Grafton Roundabout

Key:

- 50mph Speed Restriction
- SL5 Schedule reference number

Scale:

This map is not to scale

Map referred to in "Milton Keynes City Council (Various Roads, Milton Keynes) (40 mph and 50 mph Speed Restriction) Order 2026 (No.2)"

The Common Seal of Milton Keynes City Council was hereunto affixed in the presence of:

.....
Head of Legal Services