



**Making our city a  
better place to live**

Council Plan 2026-2027

# Contents

## Foreword from the Leader of the Council

### **Part 1 – Making our city a better place to live**

Helping to grow our successful city  
Towards a sustainable city  
Good homes and tackling homelessness  
Safe, healthy and caring communities  
Education, skills and jobs  
Helping to keep the city moving

### **Part 2 – Delivering a high performing, well-run council**

## Reporting on our progress





Councillor Jane Carr  
**Leader of the Council**

## **Foreword from the Leader of the Council**

Milton Keynes is a city of ambition, innovation and opportunity, with strong communities, a growing economy and a clear sense of direction.

This Council Plan sets out how we will build on these strengths over the coming year. It reflects the priorities of the Liberal Democrat and Labour administration and focuses our work on what matters most.

We are operating in a challenging environment, with financial pressures and rising demand for services. Despite this, we remain focused on delivering value for money, supporting our communities and running the council effectively and efficiently.

At the heart of this plan is a commitment to being a high-performing, well-managed council, continually improving how we work and providing clear, responsive and reliable services.

Looking ahead, this plan supports our long-term ambition in the Milton Keynes Strategy for 2050 - to create a thriving, inclusive and sustainable city where everyone can benefit.

By working with partners, communities and residents, we will continue to shape a city we are proud of, now and for the future.

Our aim

# Making our city a better place to live

Our objectives

## A thriving city

We will continue to improve our city as a unique regional and national economic powerhouse, with a growing cultural significance that builds on our success and innovates for the future.

## An inclusive city

Everyone deserves to have the same opportunities and chances in life, where people are valued, feel safe and are encouraged to participate in their community and lead healthier, fulfilled lives.

## A sustainable city

We will ensure that we grow sustainably and deliver value for money services that put tackling climate change at the heart of our actions.

Underpinned by being a **high performing, well run council**

Part one

# **Making our city a better place to live**

# Making our city a better place to live

## Helping to grow our successful city

### What we will do

1. Get the planning-focused MK City Plan 2050 to examination stage (this is when a government inspector assesses the plan against national rules and local needs).
2. Continue working to bring new life to the city centre, including university undergraduate provision and making the case for investment in a new Crown Court and legal quarter for the city centre.
3. Form a 'spatial development' partnership with neighbouring councils under to shape our region's land-use plan and make sure that Milton Keynes continues to have a strong voice.
4. Make the most of Milton Keynes inclusion in the government's New Town programme, working hard to secure investment in a Mass Rapid Transit (MRT) system to address the need to transform public transport.



# Making our city a better place to live

## Helping to grow our successful city

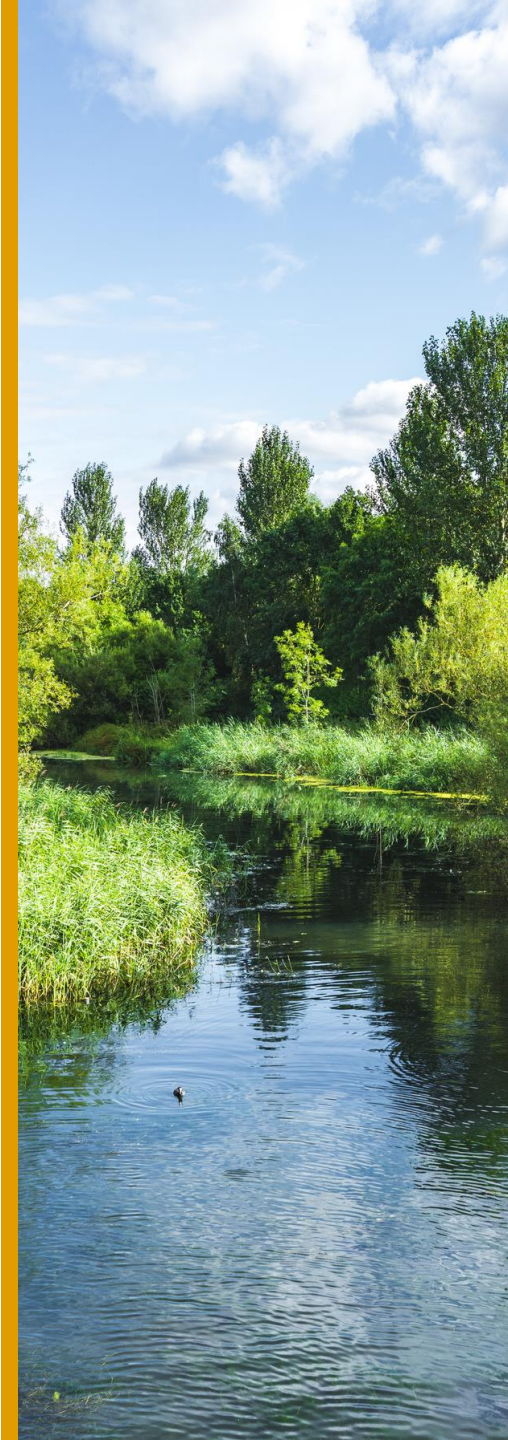
6. Focus on the revitalisation of central Bletchley town centre, improving Queensway in Bletchley, progressing the redevelopment of the Brunel Centre, funding for a new eastern entrance to Bletchley rail station and work with the Bletchley Investment Taskforce to attract new business to the area.
7. Develop and submit a high-quality, compelling bid to secure UK City of Culture in 2029, showcasing Milton Keynes' distinctive cultural offer, diversity and ambition.
8. Design and deliver a vibrant, inclusive and city-wide programme of events to celebrate Milton Keynes' 60th birthday in 2027, bringing communities together and highlighting the city's unique identity and achievements.
9. Support our major cultural events, including Pride and local arts festivals, helping expand participation and enhance the city's cultural reputation.
10. Enhance the vitality of local high streets by providing targeted small grants to enable community-led events and activities that attract visitors.



# Making our city a better place to live

## **Towards a sustainable city**

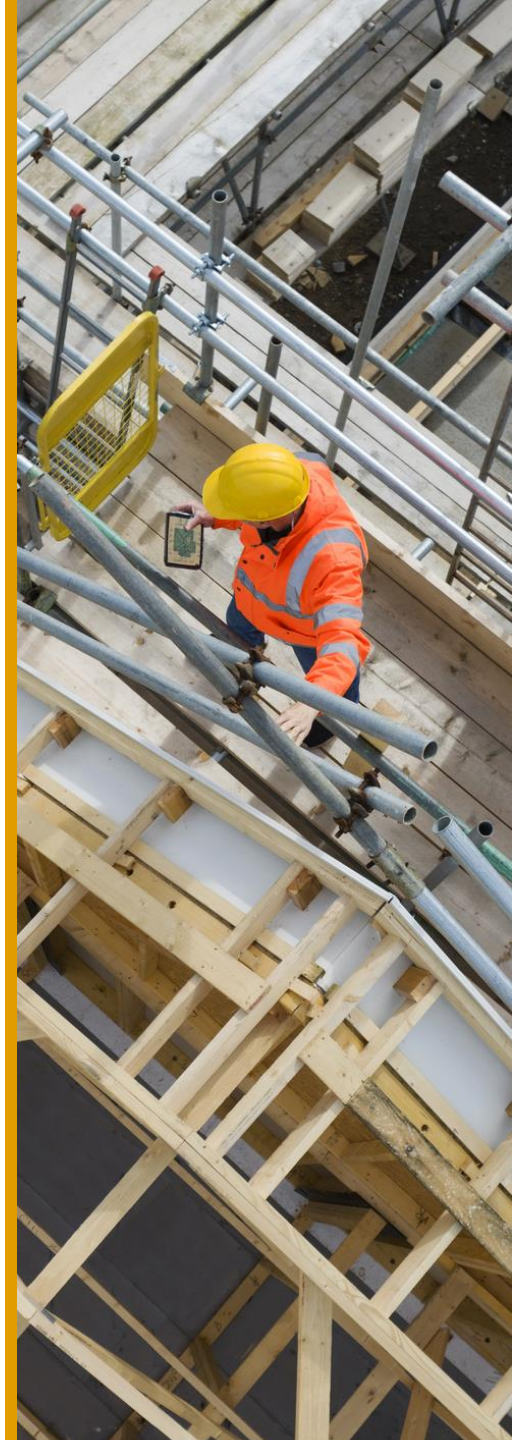
10. Aim to maintain our place as the number one city in England for recycling.
11. Keep our advanced state-of-the-art waste treatment plant running (which means we do not have to use landfill) by appointing a new operator.
12. Deliver on our plans to open brand new household reuse and recycling centres (the first in 45 years), including a reuse shop.
13. Review how bulky waste collections can be improved, including a feasibility study into a 'Big Bin' rental scheme.
14. Support the construction of a highly efficient, low-carbon city heat network in 2026/27, delivering greener energy to the hospital and other major buildings.
15. Deliver Flood Prevention Programmes in Woughton, Lavendon and other areas to better protect households from flooding.
16. Replant nearly 300 trees in Central Milton Keynes, as part of an Urban Tree Action Plan, and create a new wildlife site and a local nature reserve.



# Making our city a better place to live

## **Good homes and tackling homelessness**

17. Start the comprehensive redevelopment of the former Agora site in Wolverton to revitalise the town centre and create new homes.
18. Get the Tickford Fields development started on site, eventually providing 930 new homes - 30% of which will be affordable.
19. Explore any further action we can take to increase the proportion of affordable homes delivered through new developments across the city.
20. Be a good landlord, completing new condition surveys of our 11,000 council homes, updating the council housing business plan and closely monitoring the performance of our repairs and maintenance contractor (Mears).
21. Drive forward the next stage of our council housing transformation programme by demolishing Serpentine Court (Lakes Estate), safely decommissioning REEMA blocks (Bletchley) and agreeing plans for the former REEMA, Mellish (Bletchley) and Gables (Wolverton) sites.



## Making our city a better place to live

### **Good homes and tackling homelessness**

22. Working with a social housing provider, enable the construction of a second domestic abuse refuge, nearly 50 years since the first refuge was built.
23. Tackle the challenge of supporting more homeless households out of temporary accommodation and into a home of their own.
24. Offer rough sleepers help from specialist outreach workers and offer access to crisis accommodation to get them off the streets wherever possible.
25. Help residents who rent get the benefit of the Renters Rights Act through using new powers available to councils, particularly to tackle rogue landlords, illegal evictions, or poor housing conditions.
26. Explore the viability and costs of a scheme enabling homeowners to purchase small areas of council-owned land adjacent to their homes.
27. Put local arrangements in place for collecting the building safety levy from October 2026 in order to contribute to remediation of dangerous cladding and other building safety issues.



## Making our city a better place to live

### **Safe, healthy and caring communities**

28. Open the new centre at Linford Wood Place to provide a new home for social care day services and overnight short breaks for people with complex disabilities and learning disabilities that sets new standards of care and support.
29. Help tackle financial hardship by offering 'money matters' type advice and guidance through schools, family centres and community centres.
30. Provide crisis support for lower-income residents facing urgent financial hardship with essentials like food, energy, appliances and heating.
31. Support the NHS to develop a neighbourhood approach to healthcare, bringing care closer to where people live, strengthening prevention and improving links with charities, voluntary organisations and community-based support services.
32. Enable Walnut Tree Surgery in Monkston to expand and modernise its facilities, including new consulting rooms and a larger patient waiting area.
33. Work with the NHS to improve our health centres to support our growing population. The council already owns three and we want to increase that to five.



## Making our city a better place to live

### **Safe, healthy and caring communities**

34. Bring partners together, through the Health and Wellbeing Board, to enhance our mental health strategy, with a focus on prevention and early help.
35. Embed our new Supported Living Framework, prioritising quality accommodation from social landlords, charities and not-for-profits.
36. Provide earlier help and support for families, providing practical and emotional support to prevent problems from escalating and helping their children to thrive.
37. Improve the placement options locally for children in care, opening new local residential provision and through a regional partnership, strengthening our fostering arrangements to increase the number of local foster carers.
38. Organise an outstanding school holiday programme that provides engaging activities and healthy meals for 3,000 children from low-income families.
39. Tackle antisocial behaviour and crime, maximising the impact of our community safety team by working in close partnership with Thames Valley Police, the Business Improvement District (My MK), local businesses and residents.



## Making our city a better place to live

### **Safe, healthy and caring communities**

40. Carry out the second and final phase of the Central Library redevelopment project, improving the foyer, adult reference library and workshop space.
41. Implement our new sports strategy, unlocking £3 million of much-needed new capital investment in our leisure facilities.
42. Continue working with partners, businesses and the community to support a safer night-time economy, including maintaining Milton Keynes' commitment to the White Ribbon campaign.
43. Together with the Youth Council and our partners, support a variety of safe and fun activities for young people in our city.
44. Refurbish more play parks to help as many children as possible to enjoy them and encourage outdoor play, using the Community Infrastructure Fund.
45. Carry out more enforcement action on graffiti and flytipping and continue to try to drive down littering.



# Making our city a better place to live

## **Education, skills and jobs**

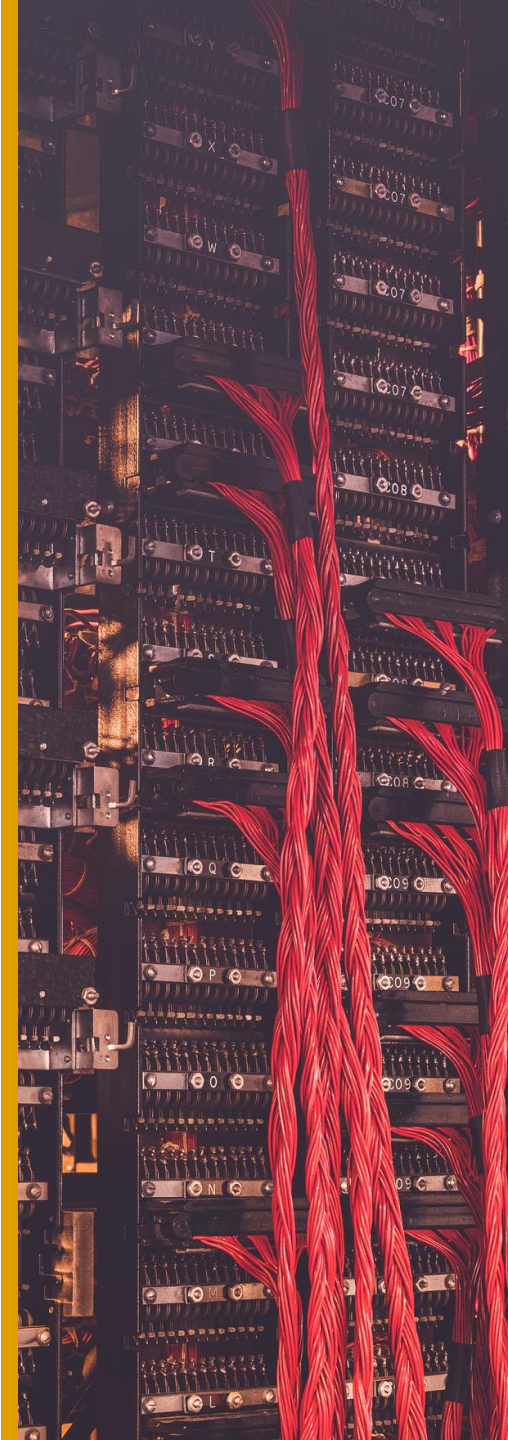
46. Maintain the take-up of free early years education for disadvantaged above the national average for England.
47. Make progress towards meeting the government target for 75% of five-year-olds in England to achieve a 'Good level of development' by 2028, delivering four Best Start Hubs.
48. Following the appointment of the academy trust to run the next all through school in Elverby in the Milton Keynes East expansion area, we'll work closely with them to ensure they're fully set for a September 2027 opening, with a strong focus on delivering a smooth and successful admissions process.
49. Deliver improvements for local children and families through the government's special educational needs and disability (SEND) reform, focusing on early intervention and broadening curriculum and inclusion in mainstream schools.



# Making our city a better place to live

## **Education, skills and jobs**

50. Open more new special education needs and disability (SEND) places at Wood End, Portfields, Chestnuts and Oxley Park schools to support our inclusive school approach.
51. Step up our efforts to improve employment prospects for vulnerable residents through targeted support, partnerships and access to training and employment opportunities, taking advantage of funding from the government's 'Connect to Work' programme.
52. Develop a readiness plan ahead of the Universal theme park opening in Bedford in 2031 that is focused on maximising the economic benefits to the city by making us 'Universal ready'.
53. Deliver Milton Keynes Tech Week in autumn 2026, showcasing Milton Keynes as a leading tech city, aiming to attract over 1,500 attendees and strengthening our reputation as a place where tech businesses can flourish.



# Making our city a better place to live

## Helping to keep the city moving

54. Develop and adopt a new, forward-thinking Local Transport Strategy, setting the framework for transport schemes and priorities for the next five years.
55. Start a multi-year programme of improvements in highways, including customer contact and communication.
56. Carry out major junction improvements at Monkston and Crownhill, with construction starting in 2026.
57. Fix more potholes and use scanning technology to spot problems and improve our roads, redways and pavements.
58. Introduce new traffic safety enforcement cameras to stop drivers blocking key junctions and holding up traffic.
59. Explore how new regulations to help tackle pavement parking could be used in Milton Keynes.



## Making our city a better place to live

### **Helping to keep the city moving**

60. Look at ways to improve our local bus service, including the council taking on bus franchising powers (where the control of planning routes, fares and awarding contracts to private operators to run the services).
61. Review our demand responsive bus service, MK Connect and decide on the next steps for the service following the end of the current contract in April 2027.
62. Work with schools and local communities to introduce new 'School Street' schemes to increase safety, improve air quality and reduce traffic around schools.
63. Test if markings and dedicated spaces on redways can help people walking, cycling and on other wheels travel more easily and confidently together.
64. Deliver high quality 'Bikeability' cycle training programmes in schools and promote schemes that help residents choose cycling or walking for more of their daily journeys instead of having to use motor vehicles.



Part two

# Delivering a high performing, well-run council



**“ High performing well run council ”**

SAYS LOCAL GOVERNMENT ASSOCIATION

Making our city a better place to live

## **Delivering a high performing, well-run council**

### **What we will do**

65. Bring forward a balanced budget for 2027/28 which does not rely on using reserves for day-to-day spending.
66. Use the new Local Outcomes Framework (a government initiative starting this year) to target our improvement efforts where they are needed most.
67. Carry out a range of ‘Changing because we have to’ projects to modernise the way the council works, improve customer experience and provide good value for money.
68. Champion equality and diversity, making the council an employer of choice for people from all backgrounds with services that are accessible and inclusive.
69. Promote a strong culture of health and safety and workforce to deliver safe and effective services.
70. Unlock Milton Keynes’ development and property potential from our successful arms-length company, Milton Keynes Development Partnership (MKDP).



# Reporting on our progress

We will provide a clear update on the progress being made delivering the 70 actions set out in this plan mid-way through the year. We will present this report to councillors for scrutiny and make it available publicly.

A final report will be produced in early 2027 which will include details of how we did against each action, explaining the background to any actions we were unable to progress. Again, we will present this report to councillors for scrutiny and make it available publicly.

Visit our website for information on our Council Plan, including progress reports  
[milton-keynes.gov.uk](https://milton-keynes.gov.uk)

**Published May 2026**

Milton Keynes City Council  
Civic, 1 Saxon Gate East, Milton Keynes, MK9 3EJ





**Milton Keynes**

City Council